

Natural changes of population 1961 – 2024

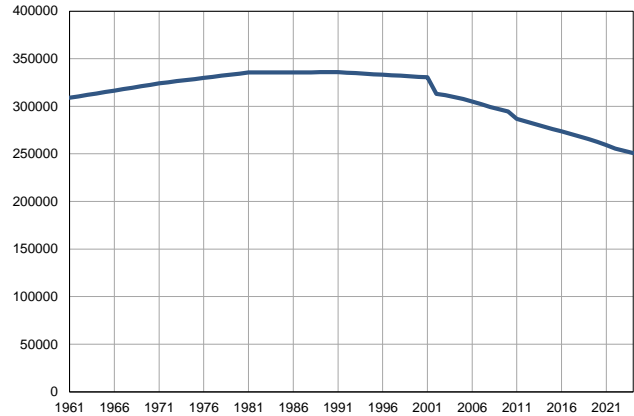
Profile
July 2025

Zlatibor

	1961	2024
Population size*	308918	250677
Livebirths, Number	7244	1978
Deaths, Number	2448	3648
Natural increase, Number	4796	-1670
Infants deaths, Number	430	9
Livebirths, per 1,000 population	23	8
Deaths, per 1,000 population	8	15
Natural increase, per 1,000 population	16	-7
Infants deaths, per 1,000 livebirths	59	5

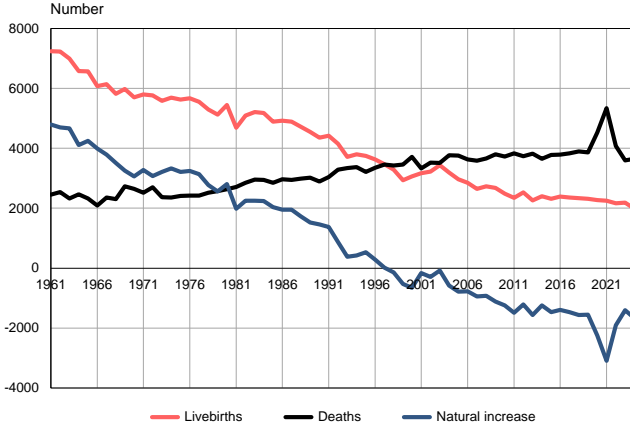
Source: Vital Statistics, * Population estimates, SORS

Population size, 1961–2024



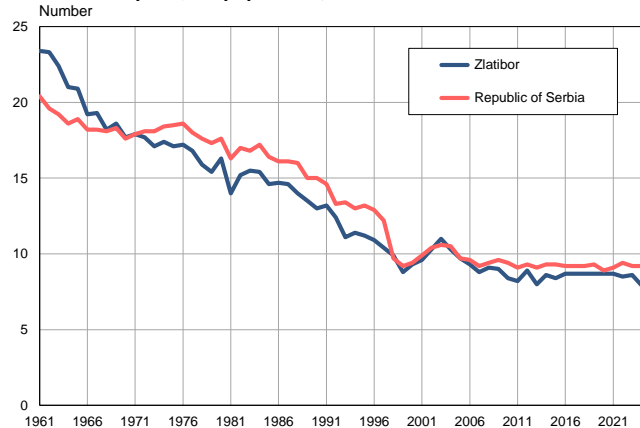
Source: Population estimates, SORS

Livebirths, deaths and natural increase, 1961–2024



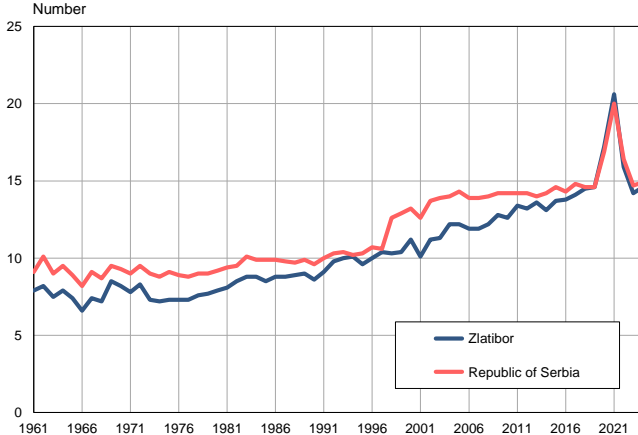
Source: Vital Statistics, SORS

Livebirths per 1,000 population, 1961–2024



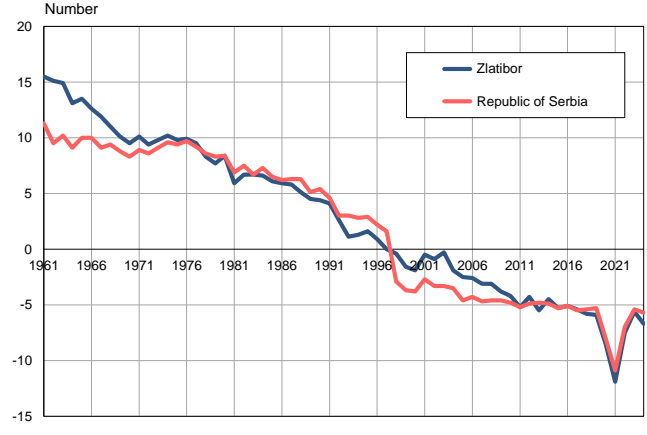
Source: Vital Statistics, SORS

Deaths per 1,000 population, 1961–2024



Source: Vital Statistics, SORS

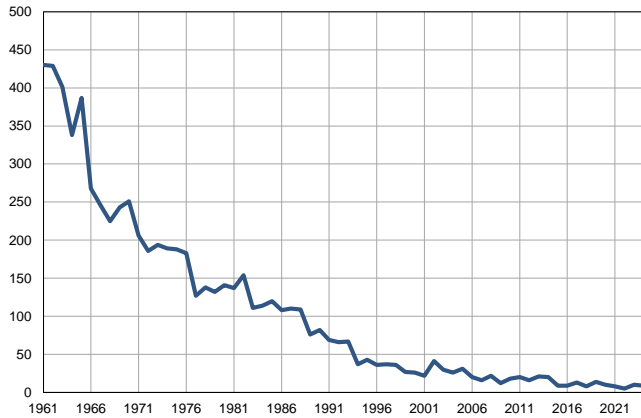
Natural increase per 1,000 population, 1961–2024



Source: Vital Statistics, SORS

Infants deaths, 1961–2024

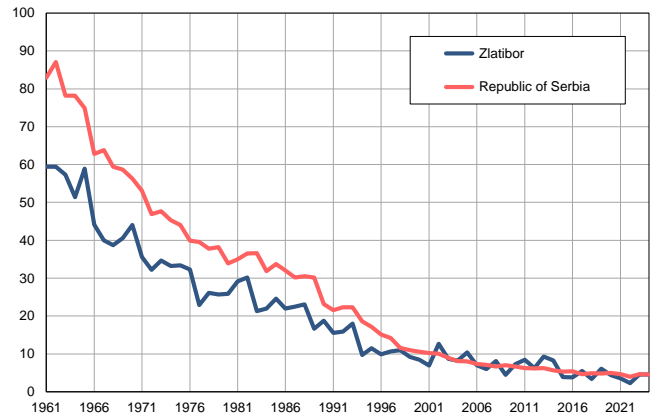
Number



Source: Vital Statistics, SORS

Infants deaths per 1,000 livebirths, 1961–2024

Number



Source: Vital Statistics, SORS

Table. Natural changes of population, Zlatibor

Year	Population size*	Livebirths	Deaths	Natural increase	Infants deaths	per 1000 population			Infant deaths per 1000 livebirths
						Livebirths	Deaths	Natural increase	
1961	308918	7244	2448	4796	430	23.4	7.9	15.5	59.4
1962	310433	7228	2534	4694	429	23.3	8.2	15.1	59.4
1963	311947	6995	2325	4670	401	22.4	7.5	14.9	57.3
1964	313462	6582	2469	4113	338	21.0	7.9	13.1	51.4
1965	314977	6571	2322	4249	387	20.9	7.4	13.5	58.9
1966	316492	6076	2087	3989	268	19.2	6.6	12.6	44.1
1967	318006	6144	2355	3789	246	19.3	7.4	11.9	40.0
1968	319521	5815	2307	3508	225	18.2	7.2	11.0	38.7
1969	321036	5981	2727	3254	243	18.6	8.5	10.1	40.6
1970	322550	5699	2642	3057	251	17.7	8.2	9.5	44.0
1971	324065	5793	2516	3277	206	17.9	7.8	10.1	35.6
1972	325216	5768	2696	3072	186	17.7	8.3	9.4	32.2
1973	326366	5585	2369	3216	194	17.1	7.3	9.8	34.7
1974	327517	5692	2362	3330	189	17.4	7.2	10.2	33.2
1975	328667	5623	2411	3212	188	17.1	7.3	9.8	33.4
1976	329818	5668	2421	3247	183	17.2	7.3	9.9	32.3
1977	330968	5557	2421	3136	127	16.8	7.3	9.5	22.9
1978	332119	5292	2515	2777	138	15.9	7.6	8.3	26.1
1979	333269	5127	2569	2558	132	15.4	7.7	7.7	25.7
1980	334420	5441	2630	2811	141	16.3	7.9	8.4	25.9
1981	335570	4685	2705	1980	137	14.0	8.1	5.9	29.2
1982	335596	5097	2846	2251	154	15.2	8.5	6.7	30.2
1983	335621	5206	2960	2246	111	15.5	8.8	6.7	21.3
1984	335647	5180	2942	2238	114	15.4	8.8	6.6	22.0
1985	335672	4885	2848	2037	120	14.6	8.5	6.1	24.6
1986	335698	4918	2963	1955	108	14.7	8.8	5.9	22.0
1987	335724	4891	2944	1947	110	14.6	8.8	5.8	22.5
1988	335749	4716	2990	1726	109	14.0	8.9	5.1	23.1
1989	335775	4548	3023	1525	76	13.5	9.0	4.5	16.7
1990	335800	4353	2890	1463	82	13.0	8.6	4.4	18.8
1991	335826	4419	3043	1376	69	13.2	9.1	4.1	15.6
1992	335295	4154	3283	871	66	12.4	9.8	2.6	15.9
1993	334764	3719	3344	375	67	11.1	10.0	1.1	18.0
1994	334233	3795	3374	421	37	11.4	10.1	1.3	9.7
1995	333702	3742	3216	526	43	11.2	9.6	1.6	11.5
1996	333171	3631	3347	284	36	10.9	10.0	0.9	9.9
1997	332641	3468	3456	12	37	10.4	10.4	0.0	10.7
1998	332110	3286	3426	-140	36	9.9	10.3	-0.4	11.0
1999	331579	2930	3454	-524	27	8.8	10.4	-1.6	9.2
2000	331048	3064	3717	-653	26	9.3	11.2	-1.9	8.5
2001	330517	3171	3334	-163	22	9.6	10.1	-0.5	6.9
2002	313000	3221	3517	-296	41	10.3	11.2	-0.9	12.7
2003	311572	3431	3507	-76	30	11.0	11.3	-0.3	8.7
2004	309856	3189	3771	-582	26	10.3	12.2	-1.9	8.2
2005	307622	2970	3760	-790	31	9.7	12.2	-2.5	10.4

Table. Natural changes of population, Zlatibor

Year	Population size*	Livebirths	Deaths	Natural increase	Infants deaths	per 1000 population			Infant deaths per 1000 livebirths
						Livebirths	Deaths	Natural increase	
2006	305072	2848	3626	-778	20	9.3	11.9	-2.6	7.0
2007	302228	2648	3591	-943	16	8.8	11.9	-3.1	6.0
2008	299360	2732	3656	-924	22	9.1	12.2	-3.1	8.1
2009	296858	2681	3795	-1114	12	9.0	12.8	-3.8	4.5
2010	294400	2481	3724	-1243	18	8.4	12.6	-4.2	7.3
2011	286825	2348	3835	-1487	20	8.2	13.4	-5.2	8.5
2012	284216	2526	3740	-1214	16	8.9	13.2	-4.3	6.3
2013	281475	2256	3818	-1562	21	8.0	13.6	-5.5	9.3
2014	278771	2404	3645	-1241	20	8.6	13.1	-4.5	8.3
2015	276210	2314	3782	-1468	9	8.4	13.7	-5.3	3.9
2016	273629	2388	3786	-1398	9	8.7	13.8	-5.1	3.8
2017	271080	2358	3827	-1469	13	8.7	14.1	-5.4	5.5
2018	268393	2337	3901	-1564	8	8.7	14.5	-5.8	3.4
2019	265638	2313	3869	-1556	14	8.7	14.6	-5.9	6.1
2020	262664	2274	4528	-2254	10	8.7	17.2	-8.5	4.4
2021	259182	2247	5340	-3093	8	8.7	20.6	-11.9	3.6
2022	255623	2163	4073	-1910	5	8.5	15.9	-7.5	2.3
2023	253017	2185	3593	-1408	10	8.6	14.2	-5.6	4.6
2024	250677	1978	3648	-1670	9	7.9	14.6	-6.7	4.6

Source: Vital Statistics, * Population estimates, SORS

Definitions

Population size

Number of population in the respective year. The data on the number of population in 1961, 1971, 1981 and 1991 are census data, while for the inter-census years the number of population was calculated as an average inter-census difference. From 2002 are given the population estimates that were calculated according to the census of population results and the annual statistics of natural mechanical population movements.

Livebirths

Absolute number of live births in the course of a year. Live born child means a child giving vital signs after birth (breathing, i.e. heartbeat), even for the shortest time, regardless the mother's pregnancy duration.

Deaths

Absolute number of deaths in the course of a year. Deceased is a person that whenever after having been born live, shows permanently stopped vital signs.

Natural increase

Natural population increase is the number of live births minus the number of deaths.

Infants deaths

Absolute number of infants deaths in the course of a year. Deceased infant is a child that after having been born live and before aged one year, shows permanently stopped vital signs.

Livebirths, per 1 000 population

Livebirths rate is the ratio of the number of live births and the population size in the respective year. The number of live births is divided by the population size and then multiplied by 1000.

Deaths, per 1 000 population

General mortality rate represents the ratio between the number of deaths and the population size in the respective year. The number of deaths is divided by population size and then multiplied by 1000.

Natural increase, per 1 000 population

Natural population increase rate is the difference between the number of live births and the number of deaths, in relation to the population size in the respective year.

Natural population increase rate = (number of live births - number of deaths) / population size * 1000

Infants deaths, per 1 000 livebirths

Infant mortality rate is the ratio of deceased children under 1 year of age and live births in the respective year. The mortality rate is expressed per 1000 live births.

Infant mortality rate = (number of deceased children under 1 year of age / number of live births) * 1000

Additional info:



Download all database data in Excel format:

[Data](#)



DevInfo profiles:

devinfo.stat.gov.rs/SerbiaProfileLauncher/?lang=en



DevInfo online database:

devinfo.stat.gov.rs/vitalna



For additional information or questions please contact:

devinfo@stat.gov.rs