

Natural changes of population 1961 – 2024

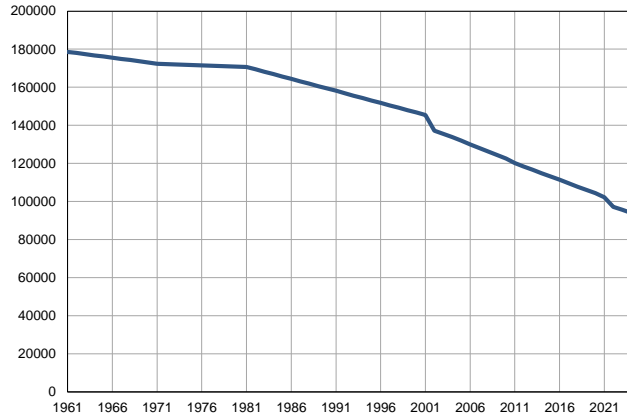
Profile
July 2025

Zaječar (district)

	1961	2024
Population size*	178623	94036
Livebirths, Number	1926	584
Deaths, Number	1942	2020
Natural increase, Number	-16	-1436
Infants deaths, Number	103	7
Livebirths, per 1,000 population	11	6
Deaths, per 1,000 population	11	22
Natural increase, per 1,000 population	0	-15
Infants deaths, per 1,000 livebirths	54	12

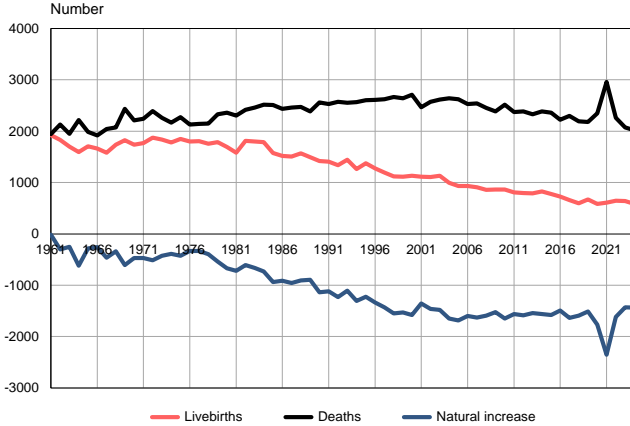
Source: Vital Statistics, * Population estimates, SORS

Population size, 1961–2024



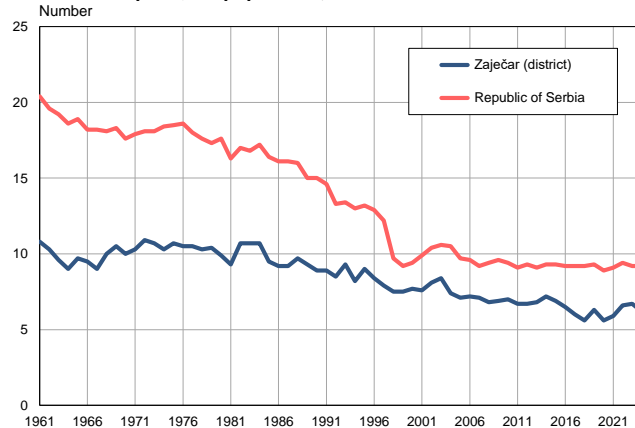
Source: Population estimates, SORS

Livebirths, deaths and natural increase, 1961–2024



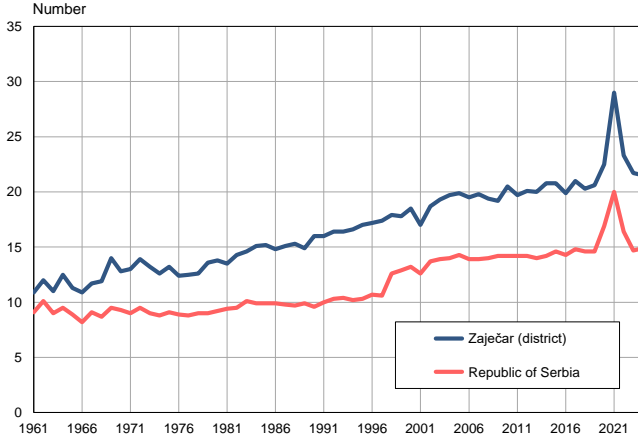
Source: Vital Statistics, SORS

Livebirths per 1,000 population, 1961–2024



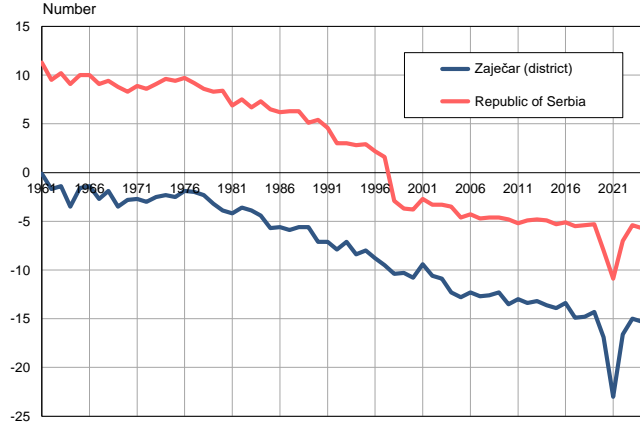
Source: Vital Statistics, SORS

Deaths per 1,000 population, 1961–2024



Source: Vital Statistics, SORS

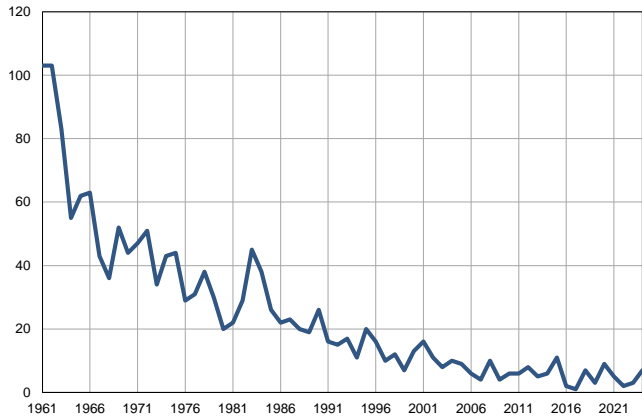
Natural increase per 1,000 population, 1961–2024



Source: Vital Statistics, SORS

Infants deaths, 1961–2024

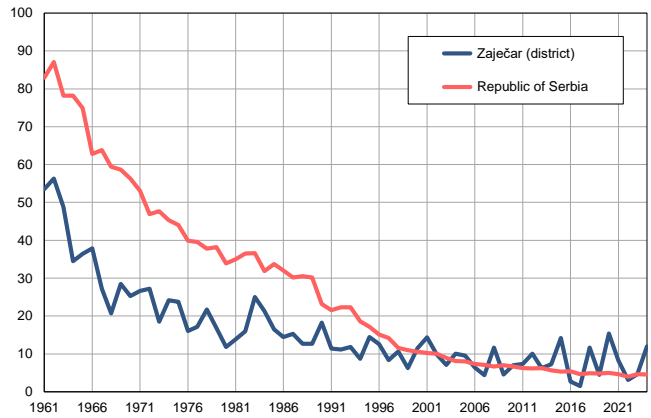
Number



Source: Vital Statistics, SORS

Infants deaths per 1,000 livebirths, 1961–2024

Number



Source: Vital Statistics, SORS

Table. Natural changes of population, Zaječar (district)

Year	Population size*	Livebirths	Deaths	Natural increase	Infants deaths	per 1000 population			Infant deaths per 1000 livebirths
						Livebirths	Deaths	Natural increase	
1961	178623	1926	1942	-16	103	10.8	10.9	-0.1	53.5
1962	178003	1828	2130	-302	103	10.3	12.0	-1.7	56.3
1963	177383	1701	1951	-250	83	9.6	11.0	-1.4	48.8
1964	176763	1593	2215	-622	55	9.0	12.5	-3.5	34.5
1965	176143	1703	1988	-285	62	9.7	11.3	-1.6	36.4
1966	175524	1663	1918	-255	63	9.5	10.9	-1.4	37.9
1967	174904	1580	2045	-465	43	9.0	11.7	-2.7	27.2
1968	174284	1738	2075	-337	36	10.0	11.9	-1.9	20.7
1969	173664	1826	2434	-608	52	10.5	14.0	-3.5	28.5
1970	173044	1739	2208	-469	44	10.0	12.8	-2.8	25.3
1971	172424	1770	2240	-470	47	10.3	13.0	-2.7	26.6
1972	172250	1876	2392	-516	51	10.9	13.9	-3.0	27.2
1973	172076	1839	2263	-424	34	10.7	13.2	-2.5	18.5
1974	171901	1778	2168	-390	43	10.3	12.6	-2.3	24.2
1975	171727	1846	2272	-426	44	10.7	13.2	-2.5	23.8
1976	171553	1800	2132	-332	29	10.5	12.4	-1.9	16.1
1977	171379	1805	2139	-334	31	10.5	12.5	-2.0	17.2
1978	171205	1755	2150	-395	38	10.3	12.6	-2.3	21.7
1979	171030	1787	2327	-540	30	10.4	13.6	-3.2	16.8
1980	170856	1693	2360	-667	20	9.9	13.8	-3.9	11.8
1981	170682	1584	2303	-719	22	9.3	13.5	-4.2	13.9
1982	169427	1811	2416	-605	29	10.7	14.3	-3.6	16.0
1983	168172	1800	2463	-663	45	10.7	14.6	-3.9	25.0
1984	166917	1787	2516	-729	38	10.7	15.1	-4.4	21.3
1985	165662	1574	2511	-937	26	9.5	15.2	-5.7	16.5
1986	164407	1520	2435	-915	22	9.2	14.8	-5.6	14.5
1987	163151	1507	2462	-955	23	9.2	15.1	-5.9	15.3
1988	161896	1569	2473	-904	20	9.7	15.3	-5.6	12.7
1989	160641	1493	2388	-895	19	9.3	14.9	-5.6	12.7
1990	159386	1419	2557	-1138	26	8.9	16.0	-7.1	18.3
1991	158131	1408	2526	-1118	16	8.9	16.0	-7.1	11.4
1992	156869	1338	2571	-1233	15	8.5	16.4	-7.9	11.2
1993	155606	1446	2551	-1105	17	9.3	16.4	-7.1	11.8
1994	154344	1261	2567	-1306	11	8.2	16.6	-8.4	8.7
1995	153082	1376	2601	-1225	20	9.0	17.0	-8.0	14.5
1996	151819	1274	2612	-1338	16	8.4	17.2	-8.8	12.6
1997	150557	1192	2619	-1427	10	7.9	17.4	-9.5	8.4
1998	149294	1121	2667	-1546	12	7.5	17.9	-10.4	10.7
1999	148032	1111	2638	-1527	7	7.5	17.8	-10.3	6.3
2000	146770	1130	2708	-1578	13	7.7	18.5	-10.8	11.5
2001	145508	1112	2467	-1355	16	7.6	17.0	-9.4	14.4
2002	137218	1109	2572	-1463	11	8.1	18.7	-10.6	9.9
2003	135553	1134	2617	-1483	8	8.4	19.3	-10.9	7.1
2004	133825	992	2640	-1648	10	7.4	19.7	-12.3	10.1
2005	131896	935	2621	-1686	9	7.1	19.9	-12.8	9.6

Table. Natural changes of population, Zaječar (district)

Year	Population size*	Livebirths	Deaths	Natural increase	Infants deaths	per 1000 population			Infant deaths per 1000 livebirths
						Livebirths	Deaths	Natural increase	
2006	129937	934	2530	-1596	6	7.2	19.5	-12.3	6.4
2007	128056	909	2539	-1630	4	7.1	19.8	-12.7	4.4
2008	126217	858	2453	-1595	10	6.8	19.4	-12.6	11.7
2009	124423	861	2384	-1523	4	6.9	19.2	-12.3	4.6
2010	122605	863	2514	-1651	6	7.0	20.5	-13.5	7.0
2011	120216	809	2372	-1563	6	6.7	19.7	-13.0	7.4
2012	118401	794	2383	-1589	8	6.7	20.1	-13.4	10.1
2013	116665	790	2330	-1540	5	6.8	20.0	-13.2	6.3
2014	114901	824	2385	-1561	6	7.2	20.8	-13.6	7.3
2015	113131	776	2358	-1582	11	6.9	20.8	-13.9	14.2
2016	111399	728	2221	-1493	2	6.5	19.9	-13.4	2.7
2017	109634	660	2297	-1637	1	6.0	21.0	-14.9	1.5
2018	107835	599	2190	-1591	7	5.6	20.3	-14.8	11.7
2019	106100	669	2182	-1513	3	6.3	20.6	-14.3	4.5
2020	104352	584	2349	-1765	9	5.6	22.5	-16.9	15.4
2021	102215	607	2961	-2354	5	5.9	29.0	-23.0	8.2
2022	97220	643	2261	-1618	2	6.6	23.3	-16.6	3.1
2023	95564	641	2074	-1433	3	6.7	21.7	-15.0	4.7
2024	94036	584	2020	-1436	7	6.2	21.5	-15.3	12.0

Source: Vital Statistics, * Population estimates, SORS

Definitions

Population size

Number of population in the respective year. The data on the number of population in 1961, 1971, 1981 and 1991 are census data, while for the inter-census years the number of population was calculated as an average inter-census difference. From 2002 are given the population estimates that were calculated according to the census of population results and the annual statistics of natural mechanical population movements.

Livebirths

Absolute number of live births in the course of a year. Live born child means a child giving vital signs after birth (breathing, i.e. heartbeat), even for the shortest time, regardless the mother's pregnancy duration.

Deaths

Absolute number of deaths in the course of a year. Deceased is a person that whenever after having been born live, shows permanently stopped vital signs.

Natural increase

Natural population increase is the number of live births minus the number of deaths.

Infants deaths

Absolute number of infants deaths in the course of a year. Deceased infant is a child that after having been born live and before aged one year, shows permanently stopped vital signs.

Livebirths, per 1 000 population

Livebirths rate is the ratio of the number of live births and the population size in the respective year. The number of live births is divided by the population size and then multiplied by 1000.

Deaths, per 1 000 population

General mortality rate represents the ratio between the number of deaths and the population size in the respective year. The number of deaths is divided by population size and then multiplied by 1000.

Natural increase, per 1 000 population

Natural population increase rate is the difference between the number of live births and the number of deaths, in relation to the population size in the respective year.

Natural population increase rate = (number of live births - number of deaths) / population size * 1000

Infants deaths, per 1 000 livebirths

Infant mortality rate is the ratio of deceased children under 1 year of age and live births in the respective year. The mortality rate is expressed per 1000 live births.

Infant mortality rate = (number of deceased children under 1 year of age / number of live births) * 1000

Additional info:



Download all database data in Excel format:

[Data](#)



DevInfo profiles:

devinfo.stat.gov.rs/SerbiaProfileLauncher/?lang=en



DevInfo online database:

devinfo.stat.gov.rs/vitalna



For additional information or questions please contact:

devinfo@stat.gov.rs