

# Natural changes of population 1961 – 2024

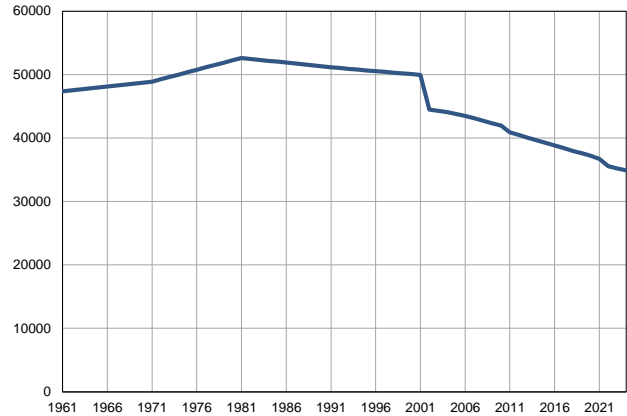
Profile  
July 2025

## Velika Plana

	1961	2024
Population size*	47388	34899
Livebirths, Number	703	286
Deaths, Number	519	595
Natural increase, Number	184	-309
Infants deaths, Number	42	0
Livebirths, per 1,000 population	15	8
Deaths, per 1,000 population	11	17
Natural increase, per 1,000 population	4	-9
Infants deaths, per 1,000 livebirths	60	0

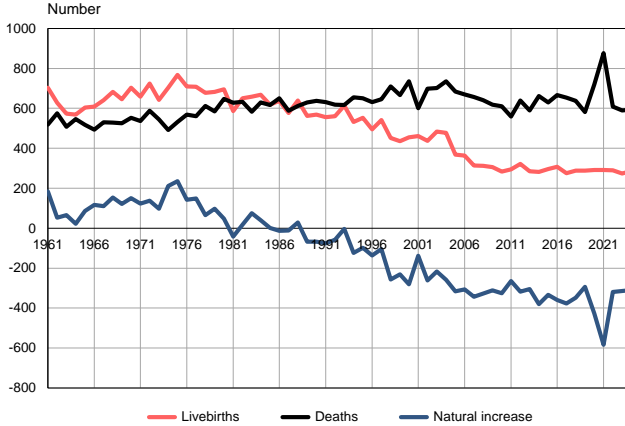
Source: Vital Statistics, \* Population estimates, SORS

Population size, 1961–2024



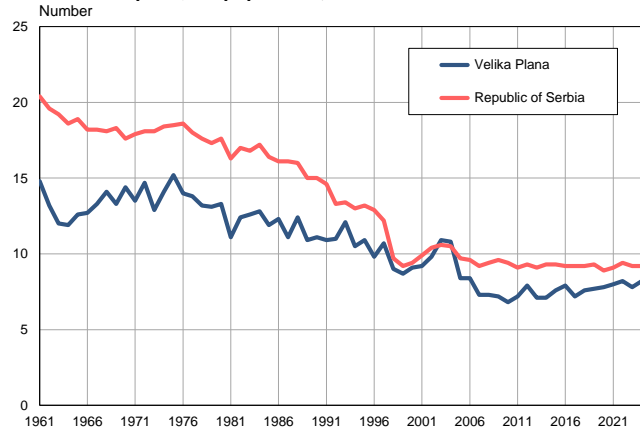
Source: Population estimates, SORS

Livebirths, deaths and natural increase, 1961–2024



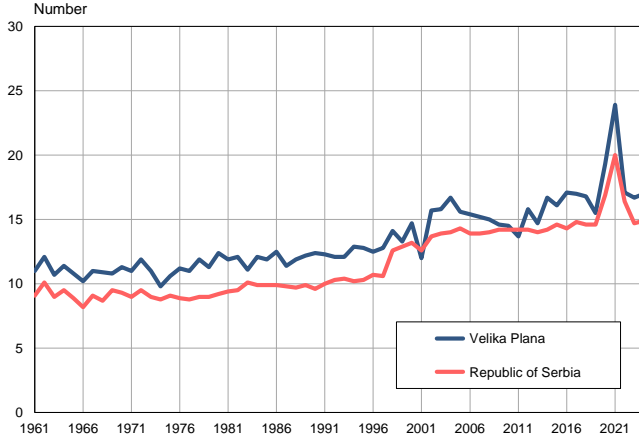
Source: Vital Statistics, SORS

Livebirths per 1,000 population, 1961–2024



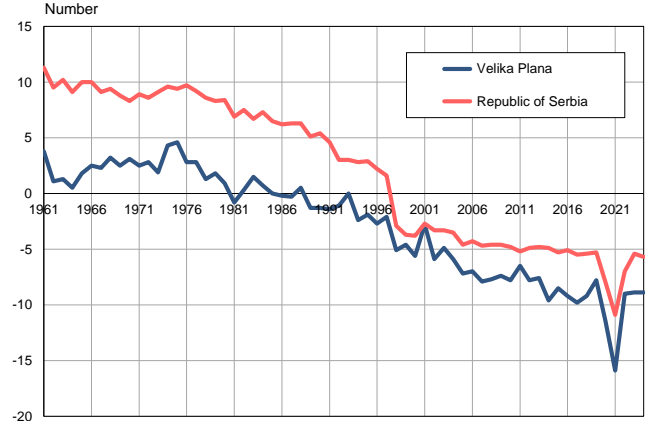
Source: Vital Statistics, SORS

Deaths per 1,000 population, 1961–2024



Source: Vital Statistics, SORS

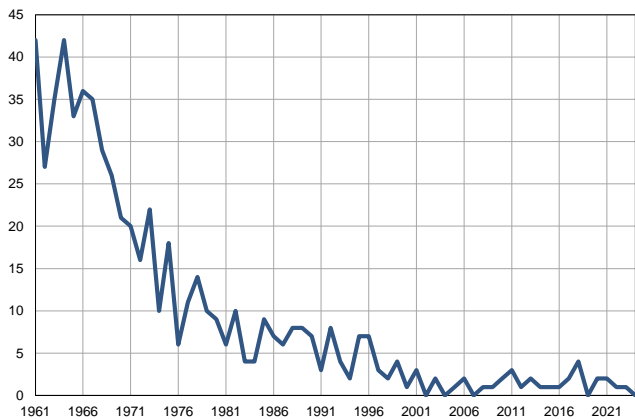
Natural increase per 1,000 population, 1961–2024



Source: Vital Statistics, SORS

**Infants deaths, 1961–2024**

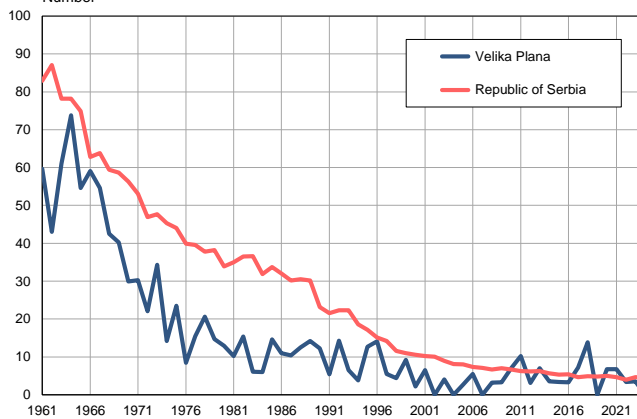
Number



Source: Vital Statistics, SORS

**Infants deaths per 1,000 livebirths, 1961–2024**

Number



Source: Vital Statistics, SORS

**Table. Natural changes of population, Velika Plana**

Year	Population size*	Livebirths	Deaths	Natural increase	Infants deaths	per 1000 population			Infant deaths per 1000 livebirths
						Livebirths	Deaths	Natural increase	
1961	47388	703	519	184	42	14.8	11.0	3.8	59.7
1962	47539	628	575	53	27	13.2	12.1	1.1	43.0
1963	47689	574	508	66	35	12.0	10.7	1.3	61.0
1964	47840	569	547	22	42	11.9	11.4	0.5	73.8
1965	47990	604	518	86	33	12.6	10.8	1.8	54.6
1966	48141	609	493	116	36	12.7	10.2	2.5	59.1
1967	48292	641	530	111	35	13.3	11.0	2.3	54.6
1968	48442	683	529	154	29	14.1	10.9	3.2	42.5
1969	48593	646	525	121	26	13.3	10.8	2.5	40.2
1970	48743	703	552	151	21	14.4	11.3	3.1	29.9
1971	48894	659	536	123	20	13.5	11.0	2.5	30.3
1972	49266	725	588	137	16	14.7	11.9	2.8	22.1
1973	49639	642	545	97	22	12.9	11.0	1.9	34.3
1974	50011	703	491	212	10	14.1	9.8	4.3	14.2
1975	50384	767	532	235	18	15.2	10.6	4.6	23.5
1976	50756	710	568	142	6	14.0	11.2	2.8	8.5
1977	51128	708	560	148	11	13.8	11.0	2.8	15.5
1978	51502	678	612	66	14	13.2	11.9	1.3	20.6
1979	51874	682	585	97	10	13.1	11.3	1.8	14.7
1980	52247	696	648	48	9	13.3	12.4	0.9	12.9
1981	52619	586	628	-42	6	11.1	11.9	-0.8	10.2
1982	52472	651	633	18	10	12.4	12.1	0.3	15.4
1983	52325	658	583	75	4	12.6	11.1	1.5	6.1
1984	52178	668	629	39	4	12.8	12.1	0.7	6.0
1985	52031	618	617	1	9	11.9	11.9	0.0	14.6
1986	51885	638	651	-13	7	12.3	12.5	-0.2	11.0
1987	51738	576	588	-12	6	11.1	11.4	-0.3	10.4
1988	51591	640	612	28	8	12.4	11.9	0.5	12.5
1989	51444	562	629	-67	8	10.9	12.2	-1.3	14.2
1990	51297	569	637	-68	7	11.1	12.4	-1.3	12.3
1991	51150	556	631	-75	3	10.9	12.3	-1.4	5.4
1992	51029	560	618	-58	8	11.0	12.1	-1.1	14.3
1993	50909	614	617	-3	4	12.1	12.1	0.0	6.5
1994	50788	532	655	-123	2	10.5	12.9	-2.4	3.8
1995	50667	552	650	-98	7	10.9	12.8	-1.9	12.7
1996	50546	495	631	-136	7	9.8	12.5	-2.7	14.1
1997	50426	541	646	-105	3	10.7	12.8	-2.1	5.5
1998	50305	452	709	-257	2	9.0	14.1	-5.1	4.4
1999	50184	435	666	-231	4	8.7	13.3	-4.6	9.2
2000	50063	455	736	-281	1	9.1	14.7	-5.6	2.2
2001	49943	461	600	-139	3	9.2	12.0	-2.8	6.5
2002	44504	437	699	-262	0	9.8	15.7	-5.9	0.0
2003	44297	484	701	-217	2	10.9	15.8	-4.9	4.1
2004	44080	477	735	-258	0	10.8	16.7	-5.9	0.0
2005	43772	368	684	-316	1	8.4	15.6	-7.2	2.7

**Table. Natural changes of population, Velika Plana**

Year	Population size*	Livebirths	Deaths	Natural increase	Infants deaths	per 1000 population			Infant deaths per 1000 livebirths
						Livebirths	Deaths	Natural increase	
2006	43471	363	670	-307	2	8.4	15.4	-7.0	5.5
2007	43126	314	657	-343	0	7.3	15.2	-7.9	0.0
2008	42713	313	641	-328	1	7.3	15.0	-7.7	3.2
2009	42326	306	618	-312	1	7.2	14.6	-7.4	3.3
2010	41985	284	610	-326	2	6.8	14.5	-7.8	7.0
2011	40906	294	559	-265	3	7.2	13.7	-6.5	10.2
2012	40510	322	640	-318	1	7.9	15.8	-7.8	3.1
2013	40052	285	590	-305	2	7.1	14.7	-7.6	7.0
2014	39620	281	662	-381	1	7.1	16.7	-9.6	3.6
2015	39231	297	630	-333	1	7.6	16.1	-8.5	3.4
2016	38846	307	666	-359	1	7.9	17.1	-9.2	3.3
2017	38423	276	653	-377	2	7.2	17.0	-9.8	7.2
2018	38000	288	637	-349	4	7.6	16.8	-9.2	13.9
2019	37626	288	582	-294	0	7.7	15.5	-7.8	0.0
2020	37222	292	719	-427	2	7.8	19.3	-11.5	6.8
2021	36710	292	876	-584	2	8.0	23.9	-15.9	6.8
2022	35544	290	609	-319	1	8.2	17.1	-9.0	3.4
2023	35215	274	589	-315	1	7.8	16.7	-8.9	3.6
2024	34899	286	595	-309	0	8.2	17.0	-8.9	0.0

Source: Vital Statistics, \* Population estimates, SORS

## Definitions

### Population size

Number of population in the respective year. The data on the number of population in 1961, 1971, 1981 and 1991 are census data, while for the inter-census years the number of population was calculated as an average inter-census difference. From 2002 are given the population estimates that were calculated according to the census of population results and the annual statistics of natural mechanical population movements.

### Livebirths

Absolute number of live births in the course of a year. Live born child means a child giving vital signs after birth (breathing, i.e. heartbeat), even for the shortest time, regardless the mother's pregnancy duration.

### Deaths

Absolute number of deaths in the course of a year. Deceased is a person that whenever after having been born live, shows permanently stopped vital signs.

### Natural increase

Natural population increase is the number of live births minus the number of deaths.

### Infants deaths

Absolute number of infants deaths in the course of a year. Deceased infant is a child that after having been born live and before aged one year, shows permanently stopped vital signs.

### Livebirths, per 1 000 population

Livebirths rate is the ratio of the number of live births and the population size in the respective year. The number of live births is divided by the population size and then multiplied by 1000.

### Deaths, per 1 000 population

General mortality rate represents the ratio between the number of deaths and the population size in the respective year. The number of deaths is divided by population size and then multiplied by 1000.

### Natural increase, per 1 000 population

Natural population increase rate is the difference between the number of live births and the number of deaths, in relation to the population size in the respective year.

Natural population increase rate = (number of live births - number of deaths) / population size \* 1000

### Infants deaths, per 1 000 livebirths

Infant mortality rate is the ratio of deceased children under 1 year of age and live births in the respective year. The mortality rate is expressed per 1000 live births.

Infant mortality rate = (number of deceased children under 1 year of age / number of live births) \* 1000

## Additional info:



Download all database data in Excel format:

[Data](#)



DevInfo profiles:

[devinfo.stat.gov.rs/SerbiaProfileLauncher/?lang=en](http://devinfo.stat.gov.rs/SerbiaProfileLauncher/?lang=en)



DevInfo online database:

[devinfo.stat.gov.rs/vitalna](http://devinfo.stat.gov.rs/vitalna)



For additional information or questions please contact:

[devinfo@stat.gov.rs](mailto:devinfo@stat.gov.rs)