

Natural changes of population 1961 – 2024

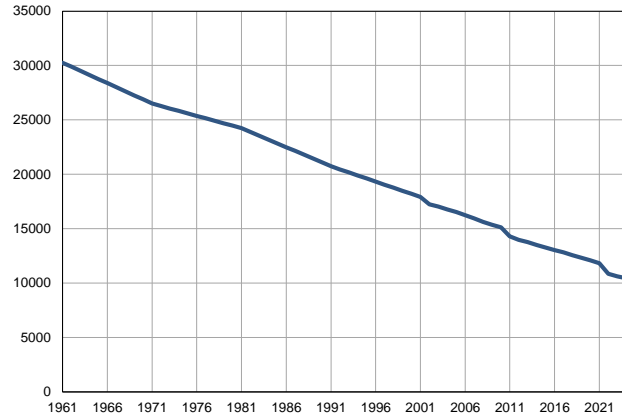
Profile
July 2025

Svrljig

	1961	2024
Population size*	30260	10437
Livebirths, Number	343	68
Deaths, Number	241	244
Natural increase, Number	102	-176
Infants deaths, Number	17	1
Livebirths, per 1,000 population	11	7
Deaths, per 1,000 population	8	23
Natural increase, per 1,000 population	3	-17
Infants deaths, per 1,000 livebirths	50	15

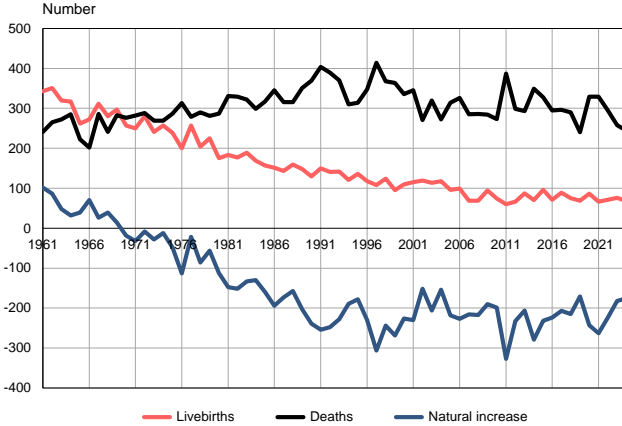
Source: Vital Statistics, * Population estimates, SORS

Population size, 1961–2024



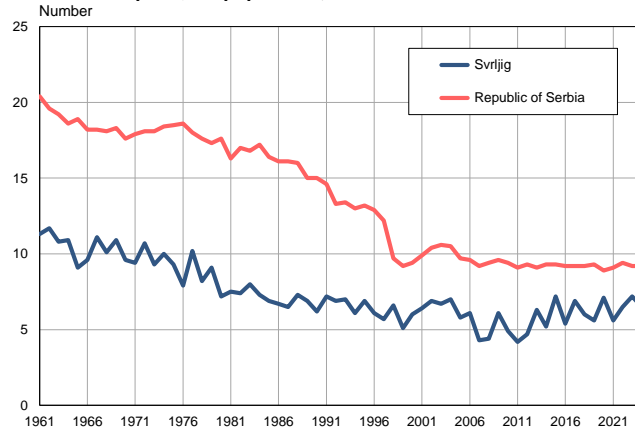
Source: Population estimates, SORS

Livebirths, deaths and natural increase, 1961–2024



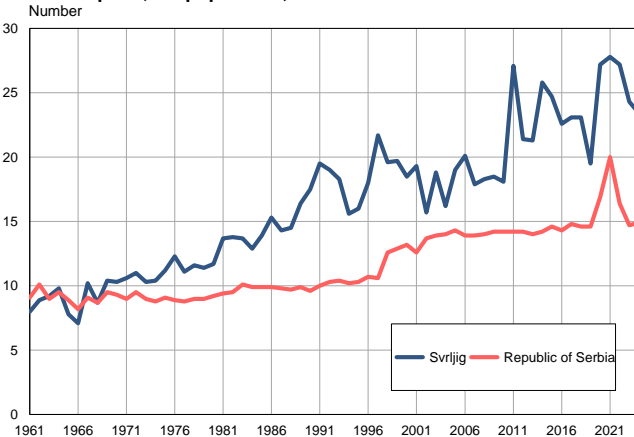
Source: Vital Statistics, SORS

Livebirths per 1,000 population, 1961–2024



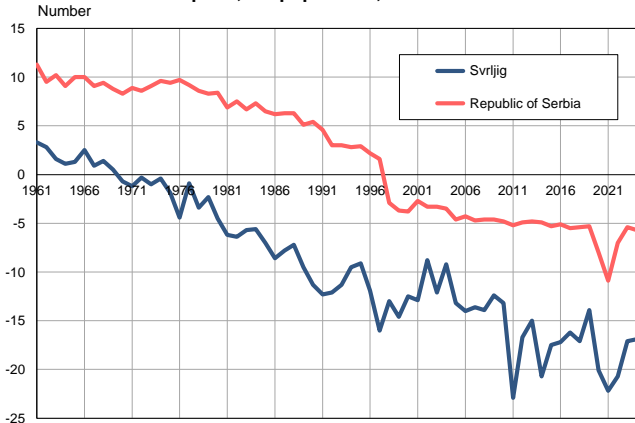
Source: Vital Statistics, SORS

Deaths per 1,000 population, 1961–2024



Source: Vital Statistics, SORS

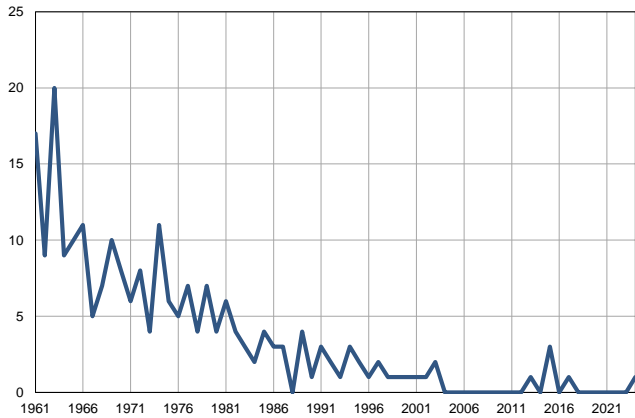
Natural increase per 1,000 population, 1961–2024



Source: Vital Statistics, SORS

Infants deaths, 1961–2024

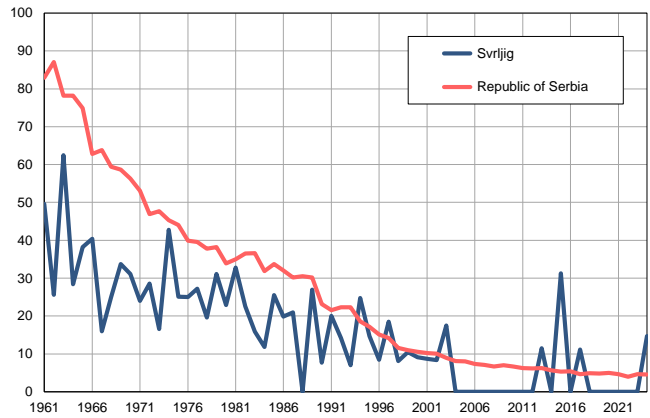
Number



Source: Vital Statistics, SORS

Infants deaths per 1,000 livebirths, 1961–2024

Number



Source: Vital Statistics, SORS

Table. Natural changes of population, Svrlijig

Year	Population size*	Livebirths	Deaths	Natural increase	Infants deaths	per 1000 population			Infant deaths per 1000 livebirths
						Livebirths	Deaths	Natural increase	
1961	30260	343	241	102	17	11.3	8.0	3.3	49.6
1962	29885	351	265	86	9	11.7	8.9	2.8	25.6
1963	29509	320	272	48	20	10.8	9.2	1.6	62.5
1964	29134	317	285	32	9	10.9	9.8	1.1	28.4
1965	28758	262	223	39	10	9.1	7.8	1.3	38.2
1966	28383	272	202	70	11	9.6	7.1	2.5	40.4
1967	28007	312	286	26	5	11.1	10.2	0.9	16.0
1968	27632	280	241	39	7	10.1	8.7	1.4	25.0
1969	27256	297	283	14	10	10.9	10.4	0.5	33.7
1970	26881	257	276	-19	8	9.6	10.3	-0.7	31.1
1971	26505	250	282	-32	6	9.4	10.6	-1.2	24.0
1972	26279	280	288	-8	8	10.7	11.0	-0.3	28.6
1973	26052	241	269	-28	4	9.3	10.3	-1.0	16.6
1974	25826	257	269	-12	11	10.0	10.4	-0.4	42.8
1975	25600	239	287	-48	6	9.3	11.2	-1.9	25.1
1976	25374	200	313	-113	5	7.9	12.3	-4.4	25.0
1977	25147	257	279	-22	7	10.2	11.1	-0.9	27.2
1978	24920	204	290	-86	4	8.2	11.6	-3.4	19.6
1979	24694	225	281	-56	7	9.1	11.4	-2.3	31.1
1980	24467	175	287	-112	4	7.2	11.7	-4.5	22.9
1981	24242	183	331	-148	6	7.5	13.7	-6.2	32.8
1982	23892	177	329	-152	4	7.4	13.8	-6.4	22.6
1983	23541	189	322	-133	3	8.0	13.7	-5.7	15.9
1984	23191	169	299	-130	2	7.3	12.9	-5.6	11.8
1985	22841	157	317	-160	4	6.9	13.9	-7.0	25.5
1986	22490	151	345	-194	3	6.7	15.3	-8.6	19.9
1987	22141	143	316	-173	3	6.5	14.3	-7.8	21.0
1988	21790	159	316	-157	0	7.3	14.5	-7.2	0.0
1989	21440	148	351	-203	4	6.9	16.4	-9.5	27.0
1990	21090	130	369	-239	1	6.2	17.5	-11.3	7.7
1991	20740	150	404	-254	3	7.2	19.5	-12.3	20.0
1992	20458	141	389	-248	2	6.9	19.0	-12.1	14.2
1993	20176	142	370	-228	1	7.0	18.3	-11.3	7.0
1994	19894	121	310	-189	3	6.1	15.6	-9.5	24.8
1995	19611	136	314	-178	2	6.9	16.0	-9.1	14.7
1996	19330	118	348	-230	1	6.1	18.0	-11.9	8.5
1997	19047	108	414	-306	2	5.7	21.7	-16.0	18.5
1998	18765	124	368	-244	1	6.6	19.6	-13.0	8.1
1999	18483	95	364	-269	1	5.1	19.7	-14.6	10.5
2000	18201	110	336	-226	1	6.0	18.5	-12.5	9.1
2001	17919	115	345	-230	1	6.4	19.3	-12.9	8.7
2002	17248	119	271	-152	1	6.9	15.7	-8.8	8.4
2003	17022	114	320	-206	2	6.7	18.8	-12.1	17.5
2004	16779	118	272	-154	0	7.0	16.2	-9.2	0.0
2005	16525	96	314	-218	0	5.8	19.0	-13.2	0.0

Table. Natural changes of population, Svrlijig

Year	Population size*	Livebirths	Deaths	Natural increase	Infants deaths	per 1000 population			Infant deaths per 1000 livebirths
						Livebirths	Deaths	Natural increase	
2006	16240	99	326	-227	0	6.1	20.1	-14.0	0.0
2007	15935	69	285	-216	0	4.3	17.9	-13.6	0.0
2008	15617	69	286	-217	0	4.4	18.3	-13.9	0.0
2009	15344	94	284	-190	0	6.1	18.5	-12.4	0.0
2010	15112	74	273	-199	0	4.9	18.1	-13.2	0.0
2011	14304	60	387	-327	0	4.2	27.1	-22.9	0.0
2012	13982	66	299	-233	0	4.7	21.4	-16.7	0.0
2013	13755	87	293	-206	1	6.3	21.3	-15.0	11.5
2014	13507	70	349	-279	0	5.2	25.8	-20.7	0.0
2015	13255	96	328	-232	3	7.2	24.7	-17.5	31.3
2016	13037	71	295	-224	0	5.4	22.6	-17.2	0.0
2017	12811	89	296	-207	1	6.9	23.1	-16.2	11.2
2018	12557	75	290	-215	0	6.0	23.1	-17.1	0.0
2019	12322	69	240	-171	0	5.6	19.5	-13.9	0.0
2020	12098	86	329	-243	0	7.1	27.2	-20.1	0.0
2021	11822	66	329	-263	0	5.6	27.8	-22.2	0.0
2022	10844	71	295	-224	0	6.5	27.2	-20.7	0.0
2023	10629	76	258	-182	0	7.2	24.3	-17.1	0.0
2024	10437	68	244	-176	1	6.5	23.4	-16.9	14.7

Source: Vital Statistics, * Population estimates, SORS

Definitions

Population size

Number of population in the respective year. The data on the number of population in 1961, 1971, 1981 and 1991 are census data, while for the inter-census years the number of population was calculated as an average inter-census difference. From 2002 are given the population estimates that were calculated according to the census of population results and the annual statistics of natural mechanical population movements.

Livebirths

Absolute number of live births in the course of a year. Live born child means a child giving vital signs after birth (breathing, i.e. heartbeat), even for the shortest time, regardless the mother's pregnancy duration.

Deaths

Absolute number of deaths in the course of a year. Deceased is a person that whenever after having been born live, shows permanently stopped vital signs.

Natural increase

Natural population increase is the number of live births minus the number of deaths.

Infants deaths

Absolute number of infants deaths in the course of a year. Deceased infant is a child that after having been born live and before aged one year, shows permanently stopped vital signs.

Livebirths, per 1 000 population

Livebirths rate is the ratio of the number of live births and the population size in the respective year. The number of live births is divided by the population size and then multiplied by 1000.

Deaths, per 1 000 population

General mortality rate represents the ratio between the number of deaths and the population size in the respective year. The number of deaths is divided by population size and then multiplied by 1000.

Natural increase, per 1 000 population

Natural population increase rate is the difference between the number of live births and the number of deaths, in relation to the population size in the respective year.

Natural population increase rate = (number of live births - number of deaths) / population size * 1000

Infants deaths, per 1 000 livebirths

Infant mortality rate is the ratio of deceased children under 1 year of age and live births in the respective year. The mortality rate is expressed per 1000 live births.

Infant mortality rate = (number of deceased children under 1 year of age / number of live births) * 1000

Additional info:



Download all database data in Excel format:

[Data](#)



DevInfo profiles:

devinfo.stat.gov.rs/SerbiaProfileLauncher/?lang=en



DevInfo online database:

devinfo.stat.gov.rs/vitalna



For additional information or questions please contact:

devinfo@stat.gov.rs