

Natural changes of population 1961 – 2024

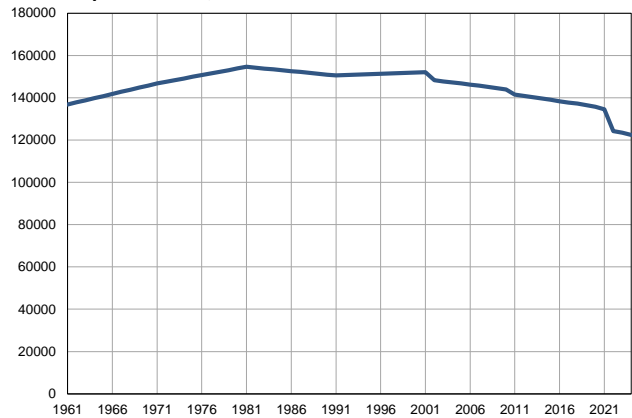
Profile
July 2025

Subotica

	1961	2024
Population size*	136782	122431
Livebirths, Number	2066	1012
Deaths, Number	1429	2097
Natural increase, Number	637	-1085
Infants deaths, Number	141	3
Livebirths, per 1,000 population	15	8
Deaths, per 1,000 population	10	17
Natural increase, per 1,000 population	5	-9
Infants deaths, per 1,000 livebirths	68	3

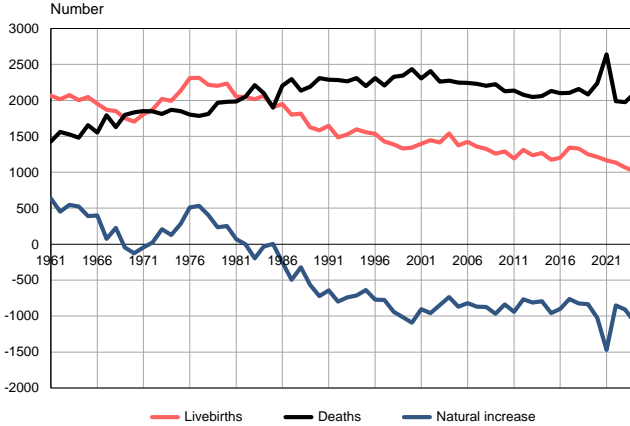
Source: Vital Statistics, * Population estimates, SORS

Population size, 1961–2024



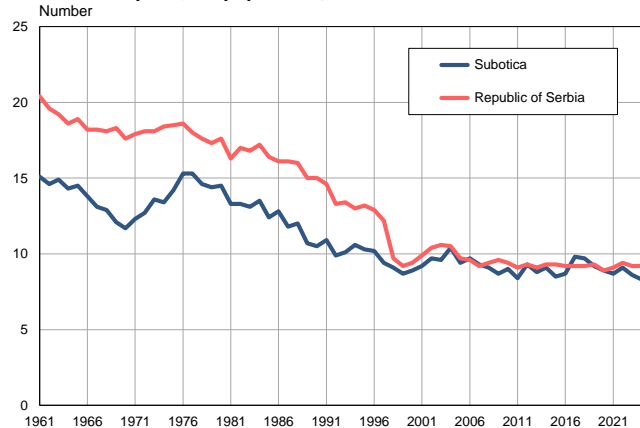
Source: Population estimates, SORS

Livebirths, deaths and natural increase, 1961–2024



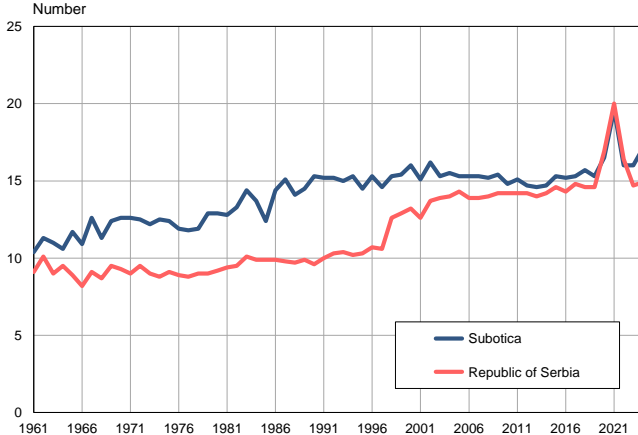
Source: Vital Statistics, SORS

Livebirths per 1,000 population, 1961–2024



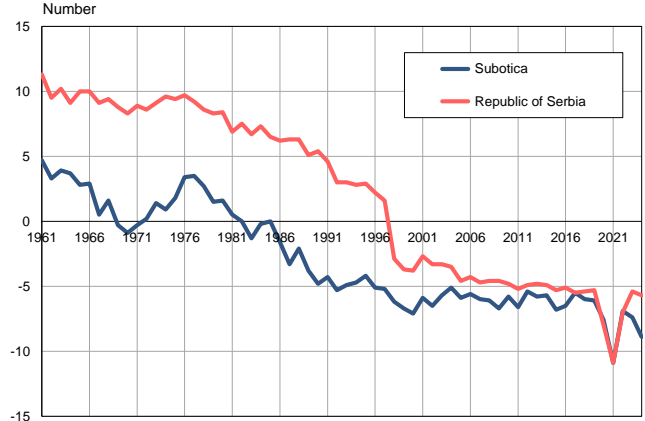
Source: Vital Statistics, SORS

Deaths per 1,000 population, 1961–2024



Source: Vital Statistics, SORS

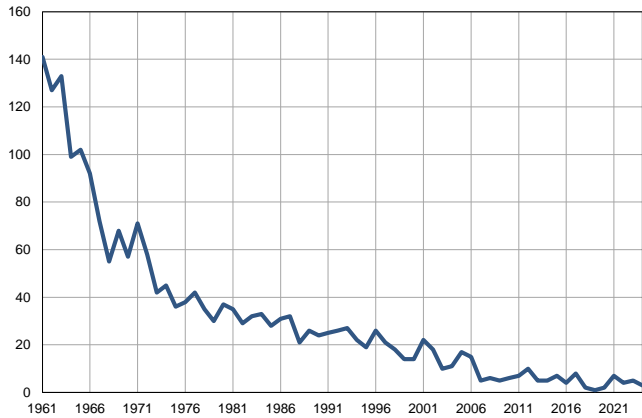
Natural increase per 1,000 population, 1961–2024



Source: Vital Statistics, SORS

Infants deaths, 1961–2024

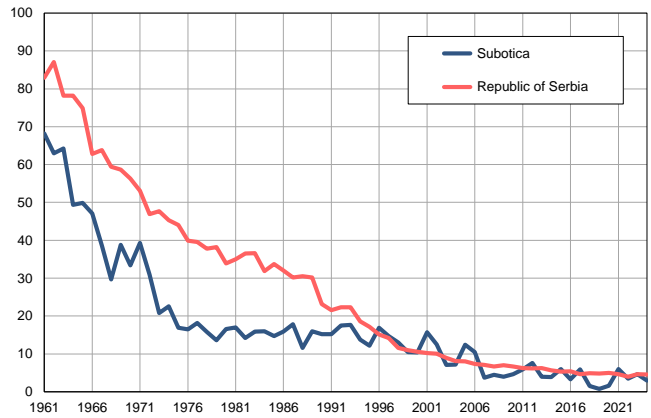
Number



Source: Vital Statistics, SORS

Infants deaths per 1,000 livebirths, 1961–2024

Number



Source: Vital Statistics, SORS

Table. Natural changes of population, Subotica

Year	Population size*	Livebirths	Deaths	Natural increase	Infants deaths	per 1000 population			Infant deaths per 1000 livebirths
						Livebirths	Deaths	Natural increase	
1961	136782	2066	1429	637	141	15.1	10.4	4.7	68.2
1962	137781	2015	1562	453	127	14.6	11.3	3.3	63.0
1963	138780	2073	1526	547	133	14.9	11.0	3.9	64.2
1964	139778	2003	1481	522	99	14.3	10.6	3.7	49.4
1965	140777	2046	1654	392	102	14.5	11.7	2.8	49.9
1966	141776	1953	1552	401	92	13.8	10.9	2.9	47.1
1967	142775	1867	1793	74	72	13.1	12.6	0.5	38.6
1968	143774	1852	1628	224	55	12.9	11.3	1.6	29.7
1969	144772	1754	1798	-44	68	12.1	12.4	-0.3	38.8
1970	145771	1705	1833	-128	57	11.7	12.6	-0.9	33.4
1971	146770	1808	1853	-45	71	12.3	12.6	-0.3	39.3
1972	147554	1874	1848	26	58	12.7	12.5	0.2	30.9
1973	148338	2019	1809	210	42	13.6	12.2	1.4	20.8
1974	149122	1995	1867	128	45	13.4	12.5	0.9	22.6
1975	149906	2133	1852	281	36	14.2	12.4	1.8	16.9
1976	150690	2309	1800	509	38	15.3	11.9	3.4	16.5
1977	151475	2314	1782	532	42	15.3	11.8	3.5	18.2
1978	152259	2217	1812	405	35	14.6	11.9	2.7	15.8
1979	153043	2202	1967	235	30	14.4	12.9	1.5	13.6
1980	153827	2232	1980	252	37	14.5	12.9	1.6	16.6
1981	154611	2053	1985	68	35	13.3	12.8	0.5	17.0
1982	154204	2048	2050	-2	29	13.3	13.3	0.0	14.2
1983	153795	2016	2212	-196	32	13.1	14.4	-1.3	15.9
1984	153388	2065	2099	-34	33	13.5	13.7	-0.2	16.0
1985	152980	1903	1900	3	28	12.4	12.4	0.0	14.7
1986	152572	1950	2201	-251	31	12.8	14.4	-1.6	15.9
1987	152165	1801	2298	-497	32	11.8	15.1	-3.3	17.8
1988	151757	1814	2135	-321	21	12.0	14.1	-2.1	11.6
1989	151349	1625	2190	-565	26	10.7	14.5	-3.8	16.0
1990	150941	1583	2308	-725	24	10.5	15.3	-4.8	15.2
1991	150534	1646	2288	-642	25	10.9	15.2	-4.3	15.2
1992	150693	1485	2285	-800	26	9.9	15.2	-5.3	17.5
1993	150851	1526	2266	-740	27	10.1	15.0	-4.9	17.7
1994	151010	1595	2309	-714	22	10.6	15.3	-4.7	13.8
1995	151168	1558	2198	-640	19	10.3	14.5	-4.2	12.2
1996	151327	1537	2309	-772	26	10.2	15.3	-5.1	16.9
1997	151484	1427	2205	-778	21	9.4	14.6	-5.2	14.7
1998	151643	1387	2327	-940	18	9.1	15.3	-6.2	13.0
1999	151802	1328	2345	-1017	14	8.7	15.4	-6.7	10.5
2000	151961	1345	2436	-1091	14	8.9	16.0	-7.1	10.4
2001	152119	1397	2303	-906	22	9.2	15.1	-5.9	15.7
2002	148346	1445	2406	-961	18	9.7	16.2	-6.5	12.5
2003	147700	1414	2262	-848	10	9.6	15.3	-5.7	7.1
2004	147254	1538	2276	-738	11	10.4	15.5	-5.1	7.2
2005	146765	1376	2246	-870	17	9.4	15.3	-5.9	12.4

Table. Natural changes of population, Subotica

Year	Population size*	Livebirths	Deaths	Natural increase	Infants deaths	per 1000 population			Infant deaths per 1000 livebirths
						Livebirths	Deaths	Natural increase	
2006	146238	1422	2241	-819	15	9.7	15.3	-5.6	10.5
2007	145752	1358	2228	-870	5	9.3	15.3	-6.0	3.7
2008	145169	1325	2201	-876	6	9.1	15.2	-6.1	4.5
2009	144540	1257	2226	-969	5	8.7	15.4	-6.7	4.0
2010	143919	1290	2128	-838	6	9.0	14.8	-5.8	4.7
2011	141551	1194	2134	-940	7	8.4	15.1	-6.6	5.9
2012	140847	1311	2077	-766	10	9.3	14.7	-5.4	7.6
2013	140223	1236	2048	-812	5	8.8	14.6	-5.8	4.0
2014	139612	1266	2059	-793	5	9.1	14.7	-5.7	3.9
2015	139011	1176	2133	-957	7	8.5	15.3	-6.8	6.0
2016	138331	1202	2102	-900	4	8.7	15.2	-6.5	3.3
2017	137753	1345	2106	-761	8	9.8	15.3	-5.5	5.9
2018	137173	1332	2157	-825	2	9.7	15.7	-6.0	1.5
2019	136475	1250	2082	-832	1	9.2	15.3	-6.1	0.8
2020	135678	1213	2239	-1026	2	8.9	16.5	-7.6	1.6
2021	134572	1165	2638	-1473	7	8.7	19.6	-10.9	6.0
2022	124161	1135	1988	-853	4	9.1	16.0	-6.9	3.5
2023	123424	1066	1976	-910	5	8.6	16.0	-7.4	4.7
2024	122431	1012	2097	-1085	3	8.3	17.1	-8.9	3.0

Source: Vital Statistics, * Population estimates, SORS

Definitions

Population size

Number of population in the respective year. The data on the number of population in 1961, 1971, 1981 and 1991 are census data, while for the inter-census years the number of population was calculated as an average inter-census difference. From 2002 are given the population estimates that were calculated according to the census of population results and the annual statistics of natural mechanical population movements.

Livebirths

Absolute number of live births in the course of a year. Live born child means a child giving vital signs after birth (breathing, i.e. heartbeat), even for the shortest time, regardless the mother's pregnancy duration.

Deaths

Absolute number of deaths in the course of a year. Deceased is a person that whenever after having been born live, shows permanently stopped vital signs.

Natural increase

Natural population increase is the number of live births minus the number of deaths.

Infants deaths

Absolute number of infants deaths in the course of a year. Deceased infant is a child that after having been born live and before aged one year, shows permanently stopped vital signs.

Livebirths, per 1 000 population

Livebirths rate is the ratio of the number of live births and the population size in the respective year. The number of live births is divided by the population size and then multiplied by 1000.

Deaths, per 1 000 population

General mortality rate represents the ratio between the number of deaths and the population size in the respective year. The number of deaths is divided by population size and then multiplied by 1000.

Natural increase, per 1 000 population

Natural population increase rate is the difference between the number of live births and the number of deaths, in relation to the population size in the respective year.

Natural population increase rate = (number of live births - number of deaths) / population size * 1000

Infants deaths, per 1 000 livebirths

Infant mortality rate is the ratio of deceased children under 1 year of age and live births in the respective year. The mortality rate is expressed per 1000 live births.

Infant mortality rate = (number of deceased children under 1 year of age / number of live births) * 1000

Additional info:



Download all database data in Excel format:

[Data](#)



DevInfo profiles:

devinfo.stat.gov.rs/SerbiaProfileLauncher/?lang=en



DevInfo online database:

devinfo.stat.gov.rs/vitalna



For additional information or questions please contact:

devinfo@stat.gov.rs