

Natural changes of population 1961 – 2024

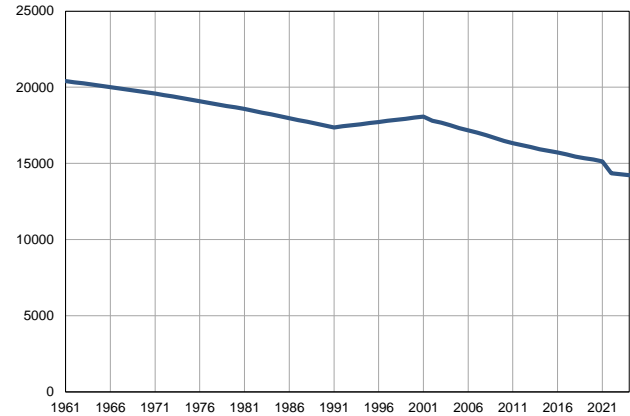
Profile
July 2025

Srbobran

	1961	2024
Population size*	20414	14233
Livebirths, Number	340	150
Deaths, Number	194	211
Natural increase, Number	146	-61
Infants deaths, Number	20	1
Livebirths, per 1,000 population	17	11
Deaths, per 1,000 population	10	15
Natural increase, per 1,000 population	7	-4
Infants deaths, per 1,000 livebirths	59	7

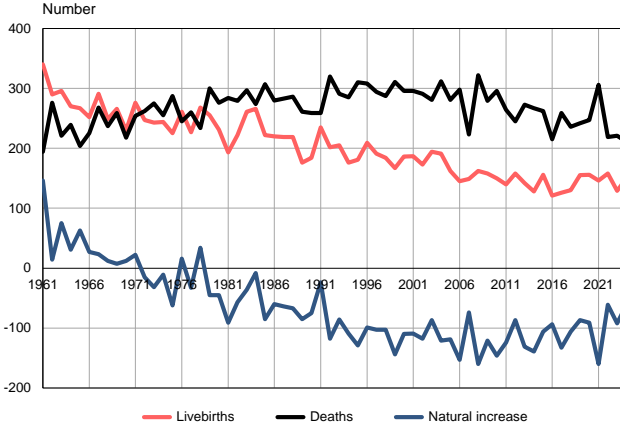
Source: Vital Statistics, * Population estimates, SORS

Population size, 1961–2024



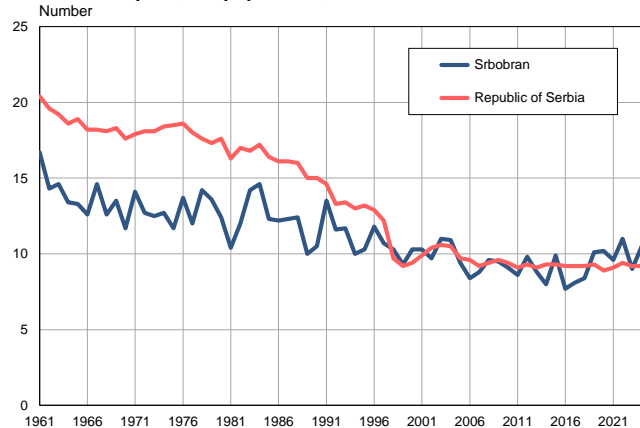
Source: Population estimates, SORS

Livebirths, deaths and natural increase, 1961–2024



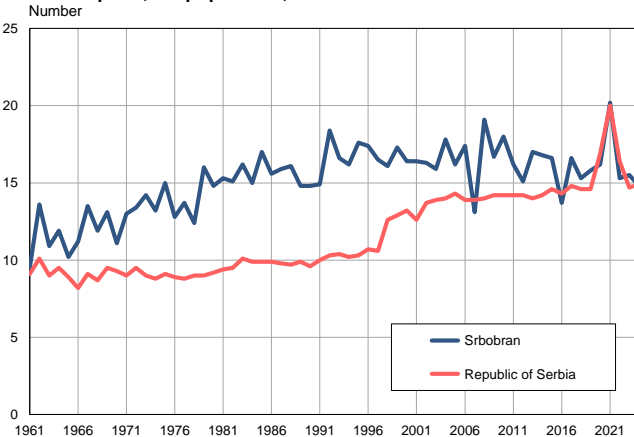
Source: Vital Statistics, SORS

Livebirths per 1,000 population, 1961–2024



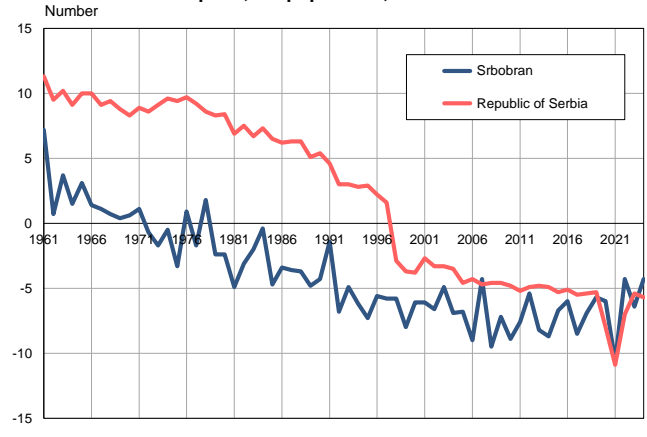
Source: Vital Statistics, SORS

Deaths per 1,000 population, 1961–2024



Source: Vital Statistics, SORS

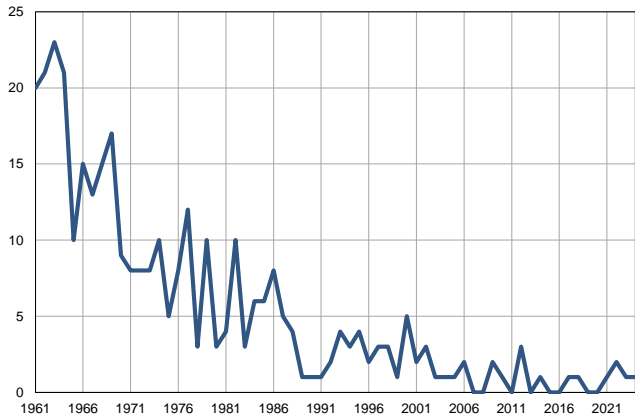
Natural increase per 1,000 population, 1961–2024



Source: Vital Statistics, SORS

Infants deaths, 1961–2024

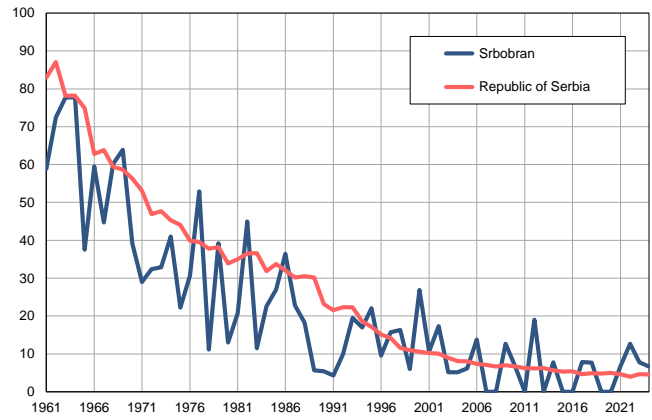
Number



Source: Vital Statistics, SORS

Infants deaths per 1,000 livebirths, 1961–2024

Number



Source: Vital Statistics, SORS

Table. Natural changes of population, Srbobran

Year	Population size*	Livebirths	Deaths	Natural increase	Infants deaths	per 1000 population			Infant deaths per 1000 livebirths
						Livebirths	Deaths	Natural increase	
1961	20414	340	194	146	20	16.7	9.5	7.2	58.8
1962	20332	290	276	14	21	14.3	13.6	0.7	72.4
1963	20250	296	221	75	23	14.6	10.9	3.7	77.7
1964	20168	270	239	31	21	13.4	11.9	1.5	77.8
1965	20086	267	204	63	10	13.3	10.2	3.1	37.5
1966	20004	252	225	27	15	12.6	11.2	1.4	59.5
1967	19921	291	268	23	13	14.6	13.5	1.1	44.7
1968	19839	249	237	12	15	12.6	11.9	0.7	60.2
1969	19758	266	259	7	17	13.5	13.1	0.4	63.9
1970	19676	230	218	12	9	11.7	11.1	0.6	39.1
1971	19594	276	254	22	8	14.1	13.0	1.1	29.0
1972	19491	247	262	-15	8	12.7	13.4	-0.7	32.4
1973	19390	243	275	-32	8	12.5	14.2	-1.7	32.9
1974	19288	244	255	-11	10	12.7	13.2	-0.5	41.0
1975	19186	225	287	-62	5	11.7	15.0	-3.3	22.2
1976	19084	261	245	16	8	13.7	12.8	0.9	30.7
1977	18981	227	260	-33	12	12.0	13.7	-1.7	52.9
1978	18878	268	234	34	3	14.2	12.4	1.8	11.2
1979	18777	255	300	-45	10	13.6	16.0	-2.4	39.2
1980	18675	231	276	-45	3	12.4	14.8	-2.4	13.0
1981	18573	193	284	-91	4	10.4	15.3	-4.9	20.7
1982	18452	222	279	-57	10	12.0	15.1	-3.1	45.0
1983	18332	261	297	-36	3	14.2	16.2	-2.0	11.5
1984	18211	266	274	-8	6	14.6	15.0	-0.4	22.6
1985	18090	222	307	-85	6	12.3	17.0	-4.7	27.0
1986	17969	220	280	-60	8	12.2	15.6	-3.4	36.4
1987	17848	219	283	-64	5	12.3	15.9	-3.6	22.8
1988	17727	219	286	-67	4	12.4	16.1	-3.7	18.3
1989	17607	176	261	-85	1	10.0	14.8	-4.8	5.7
1990	17486	184	259	-75	1	10.5	14.8	-4.3	5.4
1991	17365	235	259	-24	1	13.5	14.9	-1.4	4.3
1992	17436	202	320	-118	2	11.6	18.4	-6.8	9.9
1993	17507	205	291	-86	4	11.7	16.6	-4.9	19.5
1994	17578	176	285	-109	3	10.0	16.2	-6.2	17.0
1995	17648	181	310	-129	4	10.3	17.6	-7.3	22.1
1996	17720	209	308	-99	2	11.8	17.4	-5.6	9.6
1997	17790	191	294	-103	3	10.7	16.5	-5.8	15.7
1998	17862	184	287	-103	3	10.3	16.1	-5.8	16.3
1999	17932	167	311	-144	1	9.3	17.3	-8.0	6.0
2000	18003	186	296	-110	5	10.3	16.4	-6.1	26.9
2001	18074	187	296	-109	2	10.3	16.4	-6.1	10.7
2002	17809	173	291	-118	3	9.7	16.3	-6.6	17.3
2003	17666	194	281	-87	1	11.0	15.9	-4.9	5.2
2004	17508	191	312	-121	1	10.9	17.8	-6.9	5.2
2005	17326	162	281	-119	1	9.4	16.2	-6.8	6.2

Table. Natural changes of population, Srbobran

Year	Population size*	Livebirths	Deaths	Natural increase	Infants deaths	per 1000 population			Infant deaths per 1000 livebirths
						Livebirths	Deaths	Natural increase	
2006	17168	145	298	-153	2	8.4	17.4	-9.0	13.8
2007	17017	149	223	-74	0	8.8	13.1	-4.3	0.0
2008	16850	162	322	-160	0	9.6	19.1	-9.5	0.0
2009	16658	158	279	-121	2	9.5	16.7	-7.2	12.7
2010	16480	150	296	-146	1	9.1	18.0	-8.9	6.7
2011	16331	140	264	-124	0	8.6	16.2	-7.6	0.0
2012	16196	158	245	-87	3	9.8	15.1	-5.4	19.0
2013	16073	142	273	-131	0	8.8	17.0	-8.2	0.0
2014	15939	128	267	-139	1	8.0	16.8	-8.7	7.8
2015	15822	156	262	-106	0	9.9	16.6	-6.7	0.0
2016	15718	121	215	-94	0	7.7	13.7	-6.0	0.0
2017	15584	126	259	-133	1	8.1	16.6	-8.5	7.9
2018	15448	130	236	-106	1	8.4	15.3	-6.9	7.7
2019	15337	155	242	-87	0	10.1	15.8	-5.7	0.0
2020	15255	156	247	-91	0	10.2	16.2	-6.0	0.0
2021	15140	146	306	-160	1	9.6	20.2	-10.6	6.8
2022	14350	158	219	-61	2	11.0	15.3	-4.3	12.7
2023	14299	129	221	-92	1	9.0	15.5	-6.4	7.8
2024	14233	150	211	-61	1	10.5	14.8	-4.3	6.7

Source: Vital Statistics, * Population estimates, SORS

Definitions

Population size

Number of population in the respective year. The data on the number of population in 1961, 1971, 1981 and 1991 are census data, while for the inter-census years the number of population was calculated as an average inter-census difference. From 2002 are given the population estimates that were calculated according to the census of population results and the annual statistics of natural mechanical population movements.

Livebirths

Absolute number of live births in the course of a year. Live born child means a child giving vital signs after birth (breathing, i.e. heartbeat), even for the shortest time, regardless the mother's pregnancy duration.

Deaths

Absolute number of deaths in the course of a year. Deceased is a person that whenever after having been born live, shows permanently stopped vital signs.

Natural increase

Natural population increase is the number of live births minus the number of deaths.

Infants deaths

Absolute number of infants deaths in the course of a year. Deceased infant is a child that after having been born live and before aged one year, shows permanently stopped vital signs.

Livebirths, per 1 000 population

Livebirths rate is the ratio of the number of live births and the population size in the respective year. The number of live births is divided by the population size and then multiplied by 1000.

Deaths, per 1 000 population

General mortality rate represents the ratio between the number of deaths and the population size in the respective year. The number of deaths is divided by population size and then multiplied by 1000.

Natural increase, per 1 000 population

Natural population increase rate is the difference between the number of live births and the number of deaths, in relation to the population size in the respective year.

Natural population increase rate = (number of live births - number of deaths) / population size * 1000

Infants deaths, per 1 000 livebirths

Infant mortality rate is the ratio of deceased children under 1 year of age and live births in the respective year. The mortality rate is expressed per 1000 live births.

Infant mortality rate = (number of deceased children under 1 year of age / number of live births) * 1000

Additional info:



Download all database data in Excel format:

[Data](#)



DevInfo profiles:

devinfo.stat.gov.rs/SerbiaProfileLauncher/?lang=en



DevInfo online database:

devinfo.stat.gov.rs/vitalna



For additional information or questions please contact:

devinfo@stat.gov.rs