

Natural changes of population 1961 – 2024

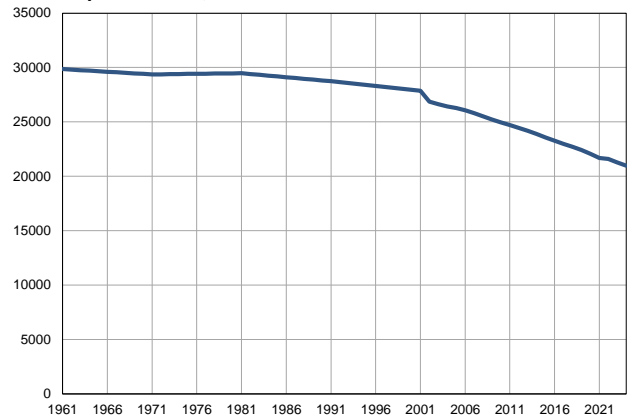
Profile
July 2025

Raška

	1961	2024
Population size*	29856	20988
Livebirths, Number	518	170
Deaths, Number	225	302
Natural increase, Number	293	-132
Infants deaths, Number	37	1
Livebirths, per 1,000 population	17	8
Deaths, per 1,000 population	8	14
Natural increase, per 1,000 population	10	-6
Infants deaths, per 1,000 livebirths	71	6

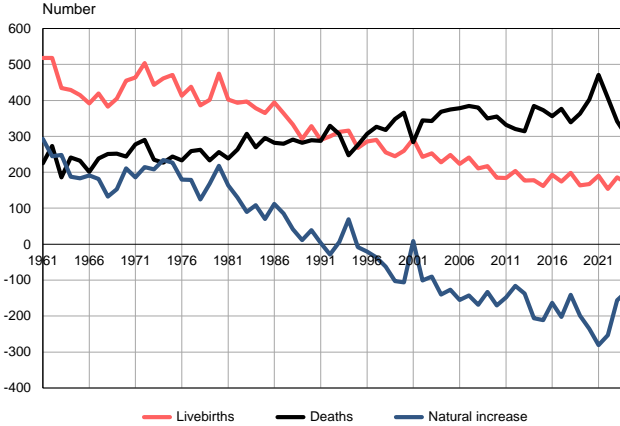
Source: Vital Statistics, * Population estimates, SORS

Population size, 1961–2024



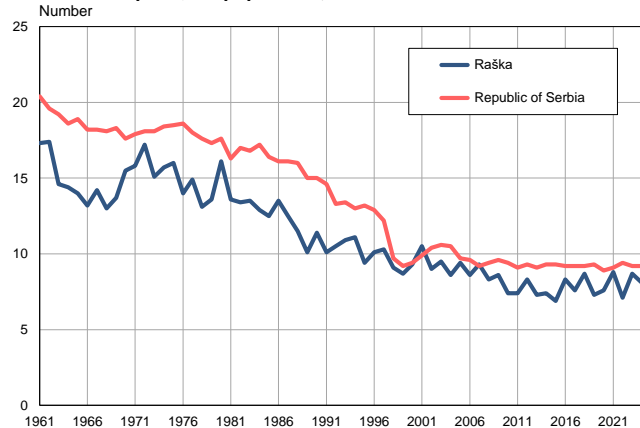
Source: Population estimates, SORS

Livebirths, deaths and natural increase, 1961–2024



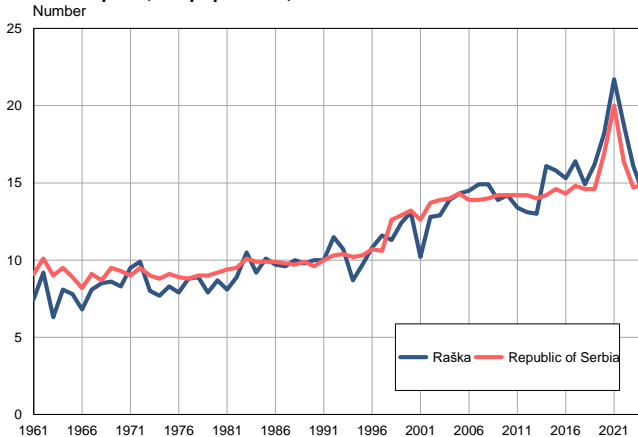
Source: Vital Statistics, SORS

Livebirths per 1,000 population, 1961–2024



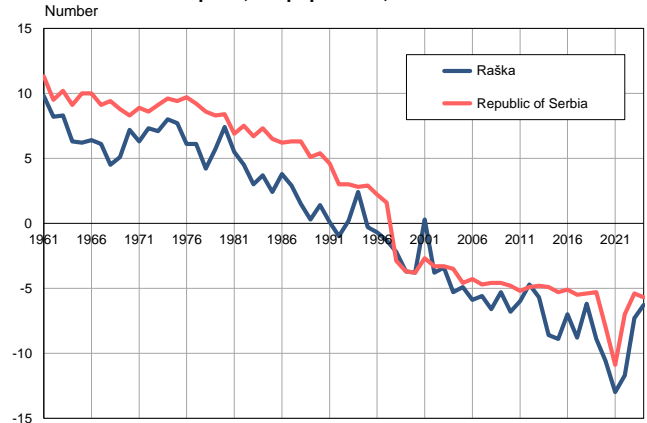
Source: Vital Statistics, SORS

Deaths per 1,000 population, 1961–2024



Source: Vital Statistics, SORS

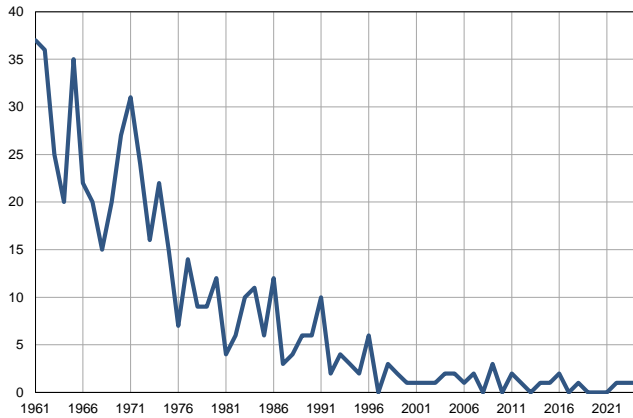
Natural increase per 1,000 population, 1961–2024



Source: Vital Statistics, SORS

Infants deaths, 1961–2024

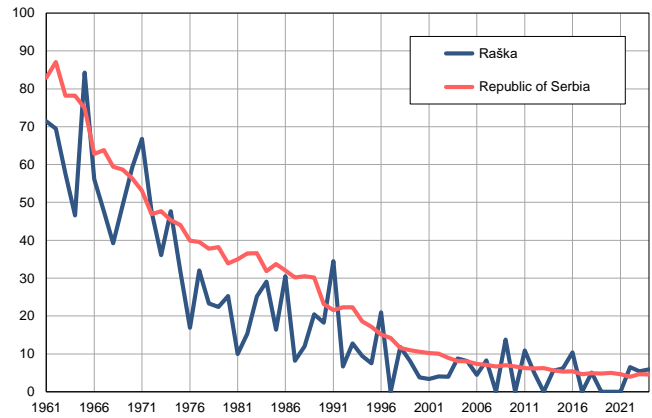
Number



Source: Vital Statistics, SORS

Infants deaths per 1,000 livebirths, 1961–2024

Number



Source: Vital Statistics, SORS

Table. Natural changes of population, Raška

Year	Population size*	Livebirths	Deaths	Natural increase	Infants deaths	per 1000 population			Infant deaths per 1000 livebirths
						Livebirths	Deaths	Natural increase	
1961	29856	518	225	293	37	17.3	7.5	9.8	71.4
1962	29807	518	273	245	36	17.4	9.2	8.2	69.5
1963	29758	434	186	248	25	14.6	6.3	8.3	57.6
1964	29709	429	241	188	20	14.4	8.1	6.3	46.6
1965	29660	415	232	183	35	14.0	7.8	6.2	84.3
1966	29612	392	201	191	22	13.2	6.8	6.4	56.1
1967	29563	419	238	181	20	14.2	8.1	6.1	47.7
1968	29514	383	251	132	15	13.0	8.5	4.5	39.2
1969	29465	405	252	153	20	13.7	8.6	5.1	49.4
1970	29416	455	244	211	27	15.5	8.3	7.2	59.3
1971	29367	464	278	186	31	15.8	9.5	6.3	66.8
1972	29377	504	290	214	24	17.2	9.9	7.3	47.6
1973	29389	443	235	208	16	15.1	8.0	7.1	36.1
1974	29399	461	227	234	22	15.7	7.7	8.0	47.7
1975	29410	471	244	227	15	16.0	8.3	7.7	31.8
1976	29421	413	233	180	7	14.0	7.9	6.1	16.9
1977	29432	438	259	179	14	14.9	8.8	6.1	32.0
1978	29443	386	262	124	9	13.1	8.9	4.2	23.3
1979	29453	401	233	168	9	13.6	7.9	5.7	22.4
1980	29464	474	256	218	12	16.1	8.7	7.4	25.3
1981	29475	402	238	164	4	13.6	8.1	5.5	10.0
1982	29402	393	263	130	6	13.4	8.9	4.5	15.3
1983	29329	397	307	90	10	13.5	10.5	3.0	25.2
1984	29257	378	270	108	11	12.9	9.2	3.7	29.1
1985	29184	365	295	70	6	12.5	10.1	2.4	16.4
1986	29111	394	282	112	12	13.5	9.7	3.8	30.5
1987	29038	364	279	85	3	12.5	9.6	2.9	8.2
1988	28965	333	291	42	4	11.5	10.0	1.5	12.0
1989	28893	293	282	11	6	10.1	9.8	0.3	20.5
1990	28820	328	289	39	6	11.4	10.0	1.4	18.3
1991	28747	290	287	3	10	10.1	10.0	0.1	34.5
1992	28660	300	329	-29	2	10.5	11.5	-1.0	6.7
1993	28573	312	306	6	4	10.9	10.7	0.2	12.8
1994	28486	316	247	69	3	11.1	8.7	2.4	9.5
1995	28399	268	276	-8	2	9.4	9.7	-0.3	7.5
1996	28312	286	307	-21	6	10.1	10.8	-0.7	21.0
1997	28226	290	327	-37	0	10.3	11.6	-1.3	0.0
1998	28139	255	318	-63	3	9.1	11.3	-2.2	11.8
1999	28052	245	348	-103	2	8.7	12.4	-3.7	8.2
2000	27965	260	366	-106	1	9.3	13.1	-3.8	3.8
2001	27878	293	284	9	1	10.5	10.2	0.3	3.4
2002	26877	243	344	-101	1	9.0	12.8	-3.8	4.1
2003	26623	253	343	-90	1	9.5	12.9	-3.4	4.0
2004	26415	228	368	-140	2	8.6	13.9	-5.3	8.8
2005	26265	248	375	-127	2	9.4	14.3	-4.9	8.1

Table. Natural changes of population, Raška

Year	Population size*	Livebirths	Deaths	Natural increase	Infants deaths	per 1000 population			Infant deaths per 1000 livebirths
						Livebirths	Deaths	Natural increase	
2006	26077	223	378	-155	1	8.6	14.5	-5.9	4.5
2007	25809	241	384	-143	2	9.3	14.9	-5.6	8.3
2008	25502	211	380	-169	0	8.3	14.9	-6.6	0.0
2009	25215	217	350	-133	3	8.6	13.9	-5.3	13.8
2010	24943	185	355	-170	0	7.4	14.2	-6.8	0.0
2011	24709	184	332	-148	2	7.4	13.4	-6.0	10.9
2012	24448	204	320	-116	1	8.3	13.1	-4.7	4.9
2013	24198	177	314	-137	0	7.3	13.0	-5.7	0.0
2014	23904	178	384	-206	1	7.4	16.1	-8.6	5.6
2015	23578	162	373	-211	1	6.9	15.8	-8.9	6.2
2016	23276	193	356	-163	2	8.3	15.3	-7.0	10.4
2017	22981	174	376	-202	0	7.6	16.4	-8.8	0.0
2018	22712	198	339	-141	1	8.7	14.9	-6.2	5.1
2019	22429	164	363	-199	0	7.3	16.2	-8.9	0.0
2020	22077	167	402	-235	0	7.6	18.2	-10.6	0.0
2021	21694	190	471	-281	0	8.8	21.7	-13.0	0.0
2022	21606	154	407	-253	1	7.1	18.8	-11.7	6.5
2023	21268	186	342	-156	1	8.7	16.1	-7.3	5.4
2024	20988	170	302	-132	1	8.1	14.4	-6.3	5.9

Source: Vital Statistics, * Population estimates, SORS

Definitions

Population size

Number of population in the respective year. The data on the number of population in 1961, 1971, 1981 and 1991 are census data, while for the inter-census years the number of population was calculated as an average inter-census difference. From 2002 are given the population estimates that were calculated according to the census of population results and the annual statistics of natural mechanical population movements.

Livebirths

Absolute number of live births in the course of a year. Live born child means a child giving vital signs after birth (breathing, i.e. heartbeat), even for the shortest time, regardless the mother's pregnancy duration.

Deaths

Absolute number of deaths in the course of a year. Deceased is a person that whenever after having been born live, shows permanently stopped vital signs.

Natural increase

Natural population increase is the number of live births minus the number of deaths.

Infants deaths

Absolute number of infants deaths in the course of a year. Deceased infant is a child that after having been born live and before aged one year, shows permanently stopped vital signs.

Livebirths, per 1 000 population

Livebirths rate is the ratio of the number of live births and the population size in the respective year. The number of live births is divided by the population size and then multiplied by 1000.

Deaths, per 1 000 population

General mortality rate represents the ratio between the number of deaths and the population size in the respective year. The number of deaths is divided by population size and then multiplied by 1000.

Natural increase, per 1 000 population

Natural population increase rate is the difference between the number of live births and the number of deaths, in relation to the population size in the respective year.

Natural population increase rate = (number of live births - number of deaths) / population size * 1000

Infants deaths, per 1 000 livebirths

Infant mortality rate is the ratio of deceased children under 1 year of age and live births in the respective year. The mortality rate is expressed per 1000 live births.

Infant mortality rate = (number of deceased children under 1 year of age / number of live births) * 1000

Additional info:



Download all database data in Excel format:

[Data](#)



DevInfo profiles:

devinfo.stat.gov.rs/SerbiaProfileLauncher/?lang=en



DevInfo online database:

devinfo.stat.gov.rs/vitalna



For additional information or questions please contact:

devinfo@stat.gov.rs