

Natural changes of population 1961 – 2024

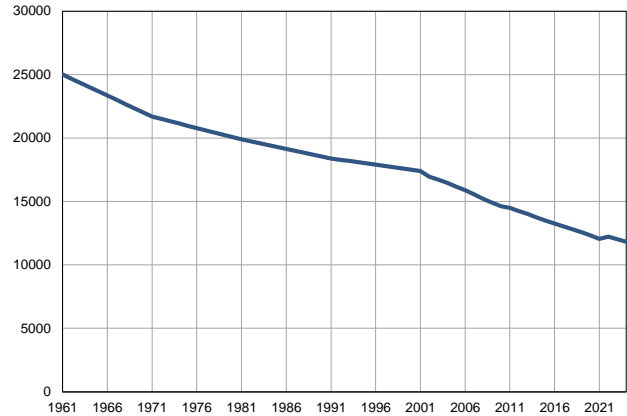
Profile
July 2025

Ljubovija

	1961	2024
Population size*	25009	11834
Livebirths, Number	651	89
Deaths, Number	260	171
Natural increase, Number	391	-82
Infants deaths, Number	57	0
Livebirths, per 1,000 population	26	8
Deaths, per 1,000 population	10	14
Natural increase, per 1,000 population	16	-7
Infants deaths, per 1,000 livebirths	88	0

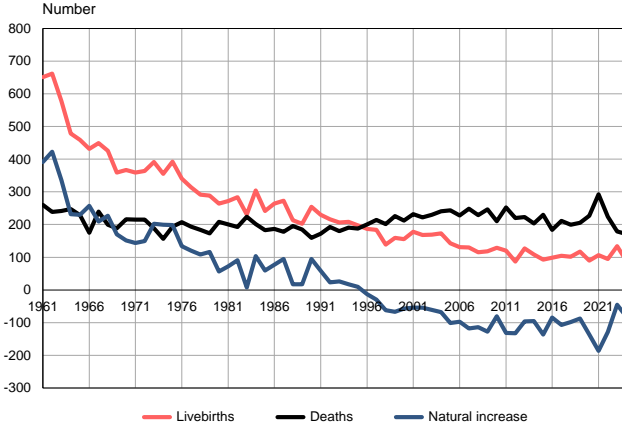
Source: Vital Statistics, * Population estimates, SORS

Population size, 1961–2024



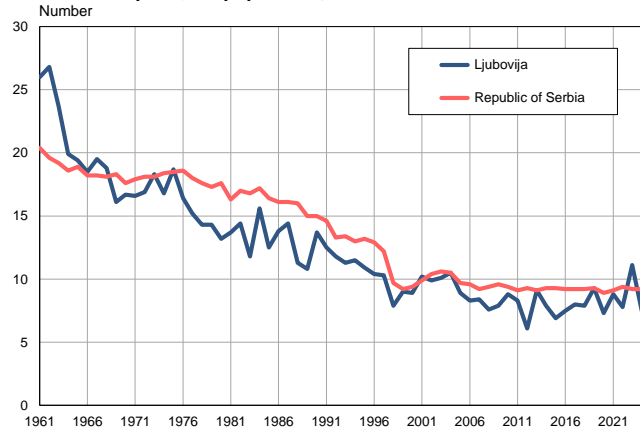
Source: Population estimates, SORS

Livebirths, deaths and natural increase, 1961–2024



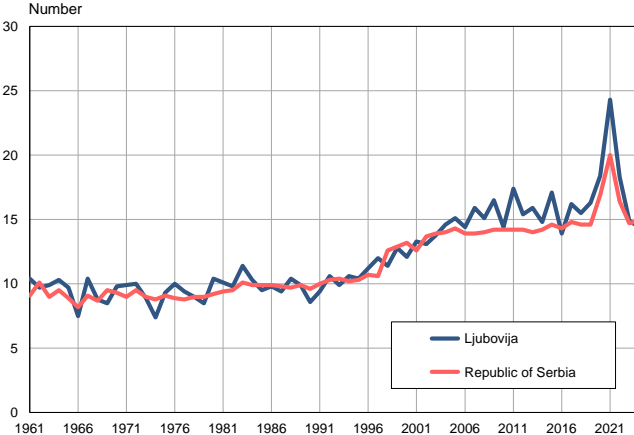
Source: Vital Statistics, SORS

Livebirths per 1,000 population, 1961–2024



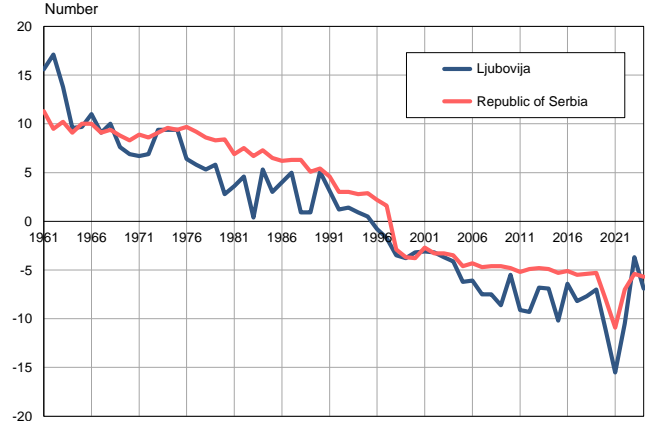
Source: Vital Statistics, SORS

Deaths per 1,000 population, 1961–2024



Source: Vital Statistics, SORS

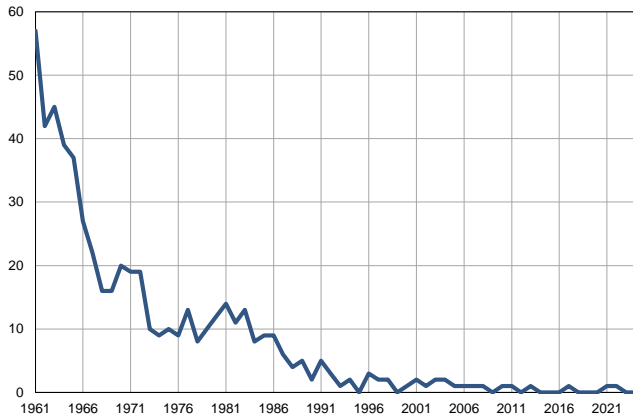
Natural increase per 1,000 population, 1961–2024



Source: Vital Statistics, SORS

Infants deaths, 1961–2024

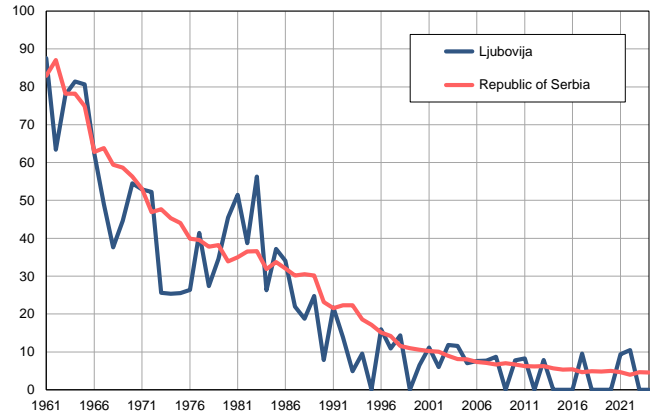
Number



Source: Vital Statistics, SORS

Infants deaths per 1,000 livebirths, 1961–2024

Number



Source: Vital Statistics, SORS

Table. Natural changes of population, Ljubovija

Year	Population size*	Livebirths	Deaths	Natural increase	Infants deaths	per 1000 population			Infant deaths per 1000 livebirths
						Livebirths	Deaths	Natural increase	
1961	25009	651	260	391	57	26.0	10.4	15.6	87.6
1962	24677	662	239	423	42	26.8	9.7	17.1	63.4
1963	24345	578	242	336	45	23.7	9.9	13.8	77.9
1964	24014	479	247	232	39	19.9	10.3	9.6	81.4
1965	23681	459	229	230	37	19.4	9.7	9.7	80.6
1966	23349	432	175	257	27	18.5	7.5	11.0	62.5
1967	23017	449	240	209	22	19.5	10.4	9.1	49.0
1968	22684	426	199	227	16	18.8	8.8	10.0	37.6
1969	22353	359	189	170	16	16.1	8.5	7.6	44.6
1970	22021	367	216	151	20	16.7	9.8	6.9	54.5
1971	21689	359	215	144	19	16.6	9.9	6.7	52.9
1972	21509	364	215	149	19	16.9	10.0	6.9	52.2
1973	21329	391	189	202	10	18.3	8.9	9.4	25.6
1974	21149	355	156	199	9	16.8	7.4	9.4	25.4
1975	20969	392	194	198	10	18.7	9.3	9.4	25.5
1976	20790	341	207	134	9	16.4	10.0	6.4	26.4
1977	20610	314	194	120	13	15.2	9.4	5.8	41.4
1978	20430	292	184	108	8	14.3	9.0	5.3	27.4
1979	20250	289	173	116	10	14.3	8.5	5.8	34.6
1980	20070	264	208	56	12	13.2	10.4	2.8	45.5
1981	19890	272	200	72	14	13.7	10.1	3.6	51.5
1982	19740	284	193	91	11	14.4	9.8	4.6	38.7
1983	19590	231	224	7	13	11.8	11.4	0.4	56.3
1984	19440	304	201	103	8	15.6	10.3	5.3	26.3
1985	19290	242	183	59	9	12.5	9.5	3.0	37.2
1986	19141	264	187	77	9	13.8	9.8	4.0	34.1
1987	18991	273	178	95	6	14.4	9.4	5.0	22.0
1988	18841	213	196	17	4	11.3	10.4	0.9	18.8
1989	18691	202	185	17	5	10.8	9.9	0.9	24.8
1990	18541	254	159	95	2	13.7	8.6	5.1	7.9
1991	18391	230	172	58	5	12.5	9.4	3.1	21.7
1992	18293	216	193	23	3	11.8	10.6	1.2	13.9
1993	18194	206	180	26	1	11.3	9.9	1.4	4.9
1994	18096	208	191	17	2	11.5	10.6	0.9	9.6
1995	17997	197	188	9	0	10.9	10.4	0.5	0.0
1996	17899	187	200	-13	3	10.4	11.2	-0.8	16.0
1997	17800	184	214	-30	2	10.3	12.0	-1.7	10.9
1998	17702	139	201	-62	2	7.9	11.4	-3.5	14.4
1999	17603	159	226	-67	0	9.0	12.8	-3.8	0.0
2000	17505	155	212	-57	1	8.9	12.1	-3.2	6.5
2001	17406	178	232	-54	2	10.2	13.3	-3.1	11.2
2002	16936	168	222	-54	1	9.9	13.1	-3.2	6.0
2003	16710	169	230	-61	2	10.1	13.8	-3.7	11.8
2004	16454	173	241	-68	2	10.5	14.6	-4.1	11.6
2005	16154	143	244	-101	1	8.9	15.1	-6.2	7.0

Table. Natural changes of population, Ljubovija

Year	Population size*	Livebirths	Deaths	Natural increase	Infants deaths	per 1000 population			Infant deaths per 1000 livebirths
						Livebirths	Deaths	Natural increase	
2006	15873	131	228	-97	1	8.3	14.4	-6.1	7.6
2007	15557	130	248	-118	1	8.4	15.9	-7.5	7.7
2008	15214	115	229	-114	1	7.6	15.1	-7.5	8.7
2009	14906	118	246	-128	0	7.9	16.5	-8.6	0.0
2010	14615	129	210	-81	1	8.8	14.4	-5.5	7.8
2011	14507	120	252	-132	1	8.3	17.4	-9.1	8.3
2012	14252	87	220	-133	0	6.1	15.4	-9.3	0.0
2013	14015	127	223	-96	1	9.1	15.9	-6.8	7.9
2014	13753	108	203	-95	0	7.9	14.8	-6.9	0.0
2015	13477	93	230	-137	0	6.9	17.1	-10.2	0.0
2016	13256	99	184	-85	0	7.5	13.9	-6.4	0.0
2017	13045	104	211	-107	1	8.0	16.2	-8.2	9.6
2018	12805	101	199	-98	0	7.9	15.5	-7.7	0.0
2019	12568	117	205	-88	0	9.3	16.3	-7.0	0.0
2020	12320	90	227	-137	0	7.3	18.4	-11.1	0.0
2021	12043	106	293	-187	1	8.8	24.3	-15.5	9.4
2022	12233	95	224	-129	1	7.8	18.3	-10.5	10.5
2023	12033	134	179	-45	0	11.1	14.9	-3.7	0.0
2024	11834	89	171	-82	0	7.5	14.4	-6.9	0.0

Source: Vital Statistics, * Population estimates, SORS

Definitions

Population size

Number of population in the respective year. The data on the number of population in 1961, 1971, 1981 and 1991 are census data, while for the inter-census years the number of population was calculated as an average inter-census difference. From 2002 are given the population estimates that were calculated according to the census of population results and the annual statistics of natural mechanical population movements.

Livebirths

Absolute number of live births in the course of a year. Live born child means a child giving vital signs after birth (breathing, i.e. heartbeat), even for the shortest time, regardless the mother's pregnancy duration.

Deaths

Absolute number of deaths in the course of a year. Deceased is a person that whenever after having been born live, shows permanently stopped vital signs.

Natural increase

Natural population increase is the number of live births minus the number of deaths.

Infants deaths

Absolute number of infants deaths in the course of a year. Deceased infant is a child that after having been born live and before aged one year, shows permanently stopped vital signs.

Livebirths, per 1 000 population

Livebirths rate is the ratio of the number of live births and the population size in the respective year. The number of live births is divided by the population size and then multiplied by 1000.

Deaths, per 1 000 population

General mortality rate represents the ratio between the number of deaths and the population size in the respective year. The number of deaths is divided by population size and then multiplied by 1000.

Natural increase, per 1 000 population

Natural population increase rate is the difference between the number of live births and the number of deaths, in relation to the population size in the respective year.

Natural population increase rate = (number of live births - number of deaths) / population size * 1000

Infants deaths, per 1 000 livebirths

Infant mortality rate is the ratio of deceased children under 1 year of age and live births in the respective year. The mortality rate is expressed per 1000 live births.

Infant mortality rate = (number of deceased children under 1 year of age / number of live births) * 1000

Additional info:



Download all database data in Excel format:

[Data](#)



DevInfo profiles:

devinfo.stat.gov.rs/SerbiaProfileLauncher/?lang=en



DevInfo online database:

devinfo.stat.gov.rs/vitalna



For additional information or questions please contact:

devinfo@stat.gov.rs