

Natural changes of population 1961 – 2024

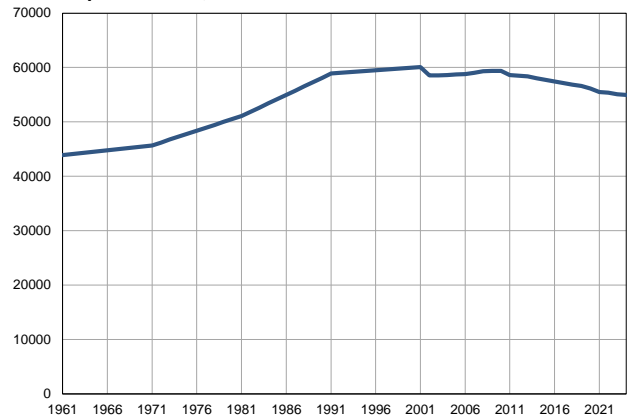
Profile
July 2025

Lazarevac

	1961	2024
Population size*	43906	54976
Livebirths, Number	845	596
Deaths, Number	329	718
Natural increase, Number	516	-122
Infants deaths, Number	34	5
Livebirths, per 1,000 population	19	11
Deaths, per 1,000 population	8	13
Natural increase, per 1,000 population	12	-2
Infants deaths, per 1,000 livebirths	40	8

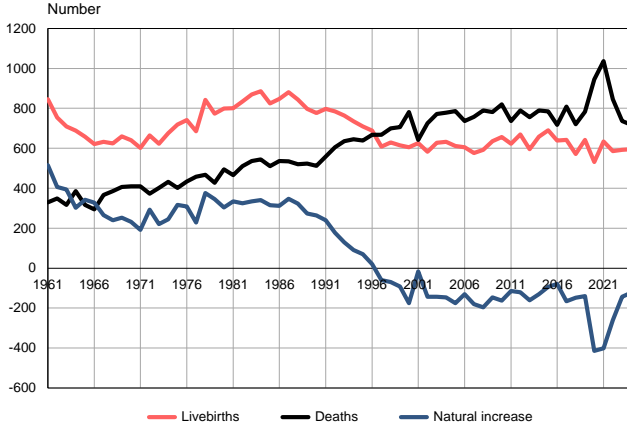
Source: Vital Statistics, * Population estimates, SORS

Population size, 1961–2024



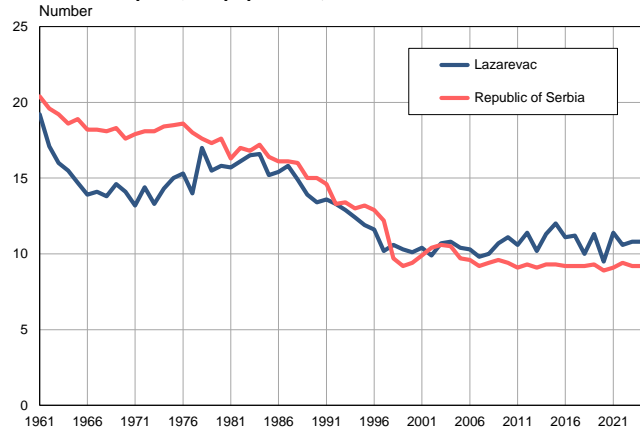
Source: Population estimates, SORS

Livebirths, deaths and natural increase, 1961–2024



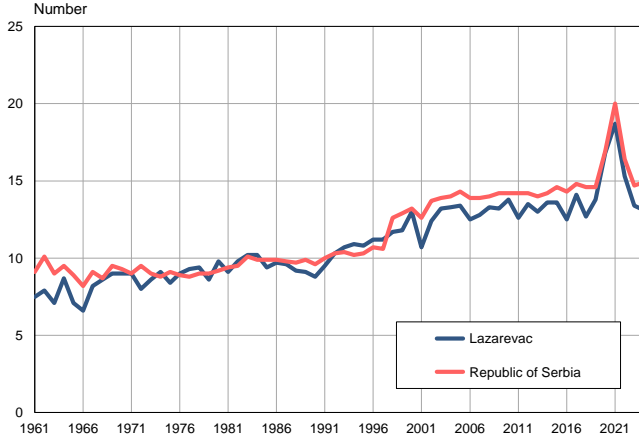
Source: Vital Statistics, SORS

Livebirths per 1,000 population, 1961–2024



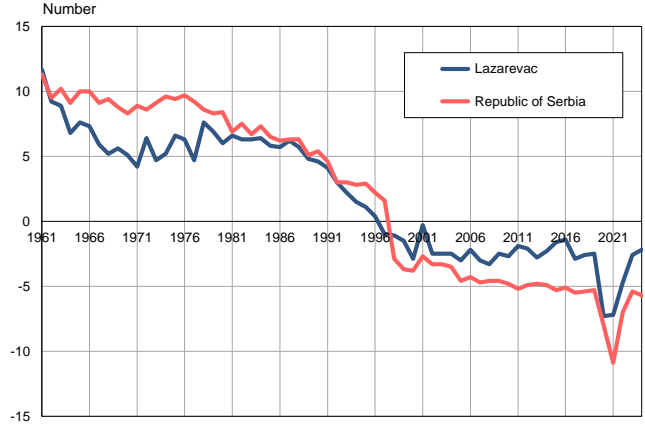
Source: Vital Statistics, SORS

Deaths per 1,000 population, 1961–2024



Source: Vital Statistics, SORS

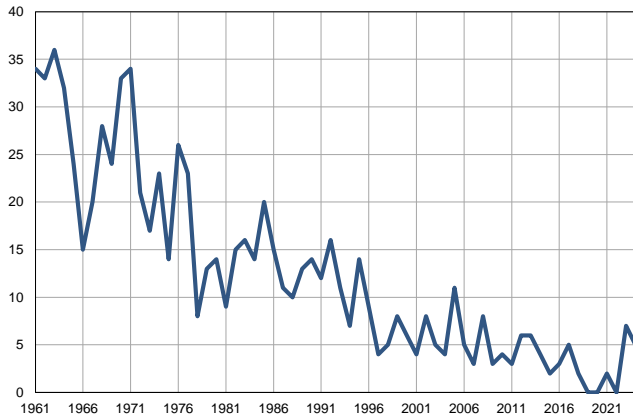
Natural increase per 1,000 population, 1961–2024



Source: Vital Statistics, SORS

Infants deaths, 1961–2024

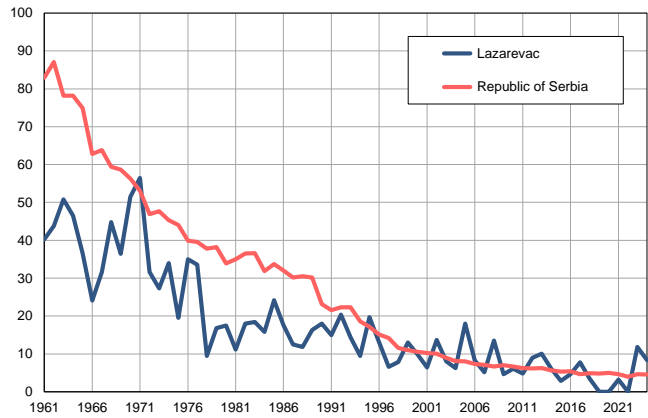
Number



Source: Vital Statistics, SORS

Infants deaths per 1,000 livebirths, 1961–2024

Number



Source: Vital Statistics, SORS

Table. Natural changes of population, Lazarevac

Year	Population size*	Livebirths	Deaths	Natural increase	Infants deaths	per 1000 population			Infant deaths per 1000 livebirths
						Livebirths	Deaths	Natural increase	
1961	43906	845	329	516	34	19.2	7.5	11.7	40.2
1962	44083	754	348	406	33	17.1	7.9	9.2	43.8
1963	44260	709	316	393	36	16.0	7.1	8.9	50.8
1964	44437	688	385	303	32	15.5	8.7	6.8	46.5
1965	44614	658	316	342	24	14.7	7.1	7.6	36.5
1966	44790	622	294	328	15	13.9	6.6	7.3	24.1
1967	44967	633	367	266	20	14.1	8.2	5.9	31.6
1968	45144	625	386	239	28	13.8	8.6	5.2	44.8
1969	45321	660	407	253	24	14.6	9.0	5.6	36.4
1970	45498	641	410	231	33	14.1	9.0	5.1	51.5
1971	45675	602	410	192	34	13.2	9.0	4.2	56.5
1972	46214	664	372	292	21	14.4	8.0	6.4	31.6
1973	46754	623	402	221	17	13.3	8.6	4.7	27.3
1974	47293	676	432	244	23	14.3	9.1	5.2	34.0
1975	47832	719	402	317	14	15.0	8.4	6.6	19.5
1976	48372	742	433	309	26	15.3	9.0	6.3	35.0
1977	48911	685	457	228	23	14.0	9.3	4.7	33.6
1978	49450	843	467	376	8	17.0	9.4	7.6	9.5
1979	49989	773	428	345	13	15.5	8.6	6.9	16.8
1980	50529	799	495	304	14	15.8	9.8	6.0	17.5
1981	51068	801	466	335	9	15.7	9.1	6.6	11.2
1982	51849	835	510	325	15	16.1	9.8	6.3	18.0
1983	52631	870	536	334	16	16.5	10.2	6.3	18.4
1984	53411	886	545	341	14	16.6	10.2	6.4	15.8
1985	54194	825	510	315	20	15.2	9.4	5.8	24.2
1986	54975	848	536	312	15	15.4	9.7	5.7	17.7
1987	55756	881	534	347	11	15.8	9.6	6.2	12.5
1988	56538	844	521	323	10	14.9	9.2	5.7	11.8
1989	57319	798	524	274	13	13.9	9.1	4.8	16.3
1990	58101	776	513	263	14	13.4	8.8	4.6	18.0
1991	58882	798	558	240	12	13.6	9.5	4.1	15.0
1992	59001	784	606	178	16	13.3	10.3	3.0	20.4
1993	59120	764	635	129	11	12.9	10.7	2.2	14.4
1994	59238	735	645	90	7	12.4	10.9	1.5	9.5
1995	59357	709	639	70	14	11.9	10.8	1.1	19.7
1996	59476	688	668	20	9	11.6	11.2	0.4	13.1
1997	59595	608	668	-60	4	10.2	11.2	-1.0	6.6
1998	59714	630	699	-69	5	10.6	11.7	-1.1	7.9
1999	59833	615	707	-92	8	10.3	11.8	-1.5	13.0
2000	59951	606	781	-175	6	10.1	13.0	-2.9	9.9
2001	60070	626	642	-16	4	10.4	10.7	-0.3	6.4
2002	58537	582	725	-143	8	9.9	12.4	-2.5	13.7
2003	58540	628	772	-144	5	10.7	13.2	-2.5	8.0
2004	58638	632	778	-146	4	10.8	13.3	-2.5	6.3
2005	58717	612	787	-175	11	10.4	13.4	-3.0	18.0

Table. Natural changes of population, Lazarevac

Year	Population size*	Livebirths	Deaths	Natural increase	Infants deaths	per 1000 population			Infant deaths per 1000 livebirths
						Livebirths	Deaths	Natural increase	
2006	58764	606	736	-130	5	10.3	12.5	-2.2	8.3
2007	59043	577	758	-181	3	9.8	12.8	-3.0	5.2
2008	59322	593	790	-197	8	10.0	13.3	-3.3	13.5
2009	59364	635	782	-147	3	10.7	13.2	-2.5	4.7
2010	59366	657	820	-163	4	11.1	13.8	-2.7	6.1
2011	58596	623	737	-114	3	10.6	12.6	-1.9	4.8
2012	58523	669	790	-121	6	11.4	13.5	-2.1	9.0
2013	58352	595	756	-161	6	10.2	13.0	-2.8	10.1
2014	58049	658	789	-131	4	11.3	13.6	-2.3	6.1
2015	57735	690	784	-94	2	12.0	13.6	-1.6	2.9
2016	57444	639	718	-79	3	11.1	12.5	-1.4	4.7
2017	57136	642	808	-166	5	11.2	14.1	-2.9	7.8
2018	56865	571	720	-149	2	10.0	12.7	-2.6	3.5
2019	56595	642	783	-141	0	11.3	13.8	-2.5	0.0
2020	56125	531	945	-414	0	9.5	16.8	-7.3	0.0
2021	55477	634	1036	-402	2	11.4	18.7	-7.2	3.2
2022	55366	586	846	-260	0	10.6	15.3	-4.7	0.0
2023	55098	593	736	-143	7	10.8	13.4	-2.6	11.8
2024	54976	596	718	-122	5	10.8	13.1	-2.2	8.4

Source: Vital Statistics, * Population estimates, SORS

Definitions

Population size

Number of population in the respective year. The data on the number of population in 1961, 1971, 1981 and 1991 are census data, while for the inter-census years the number of population was calculated as an average inter-census difference. From 2002 are given the population estimates that were calculated according to the census of population results and the annual statistics of natural mechanical population movements.

Livebirths

Absolute number of live births in the course of a year. Live born child means a child giving vital signs after birth (breathing, i.e. heartbeat), even for the shortest time, regardless the mother's pregnancy duration.

Deaths

Absolute number of deaths in the course of a year. Deceased is a person that whenever after having been born live, shows permanently stopped vital signs.

Natural increase

Natural population increase is the number of live births minus the number of deaths.

Infants deaths

Absolute number of infants deaths in the course of a year. Deceased infant is a child that after having been born live and before aged one year, shows permanently stopped vital signs.

Livebirths, per 1 000 population

Livebirths rate is the ratio of the number of live births and the population size in the respective year. The number of live births is divided by the population size and then multiplied by 1000.

Deaths, per 1 000 population

General mortality rate represents the ratio between the number of deaths and the population size in the respective year. The number of deaths is divided by population size and then multiplied by 1000.

Natural increase, per 1 000 population

Natural population increase rate is the difference between the number of live births and the number of deaths, in relation to the population size in the respective year.

Natural population increase rate = (number of live births - number of deaths) / population size * 1000

Infants deaths, per 1 000 livebirths

Infant mortality rate is the ratio of deceased children under 1 year of age and live births in the respective year. The mortality rate is expressed per 1000 live births.

Infant mortality rate = (number of deceased children under 1 year of age / number of live births) * 1000

Additional info:



Download all database data in Excel format:

[Data](#)



DevInfo profiles:

devinfo.stat.gov.rs/SerbiaProfileLauncher/?lang=en



DevInfo online database:

devinfo.stat.gov.rs/vitalna



For additional information or questions please contact:

devinfo@stat.gov.rs