

Natural changes of population 1961 – 2024

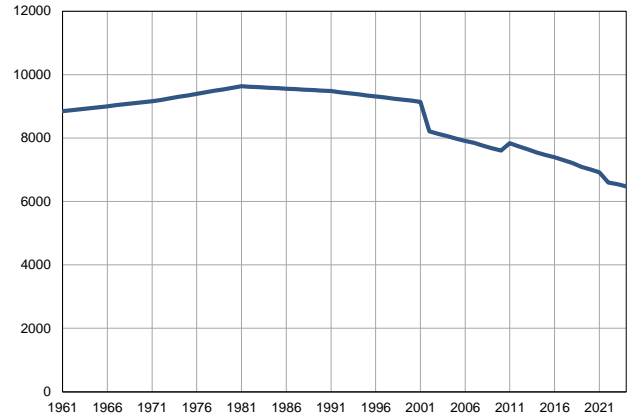
Profile
July 2025

Lapovo

	1961	2024
Population size*	8850	6480
Livebirths, Number	100	51
Deaths, Number	80	112
Natural increase, Number	20	-61
Infants deaths, Number	6	0
Livebirths, per 1,000 population	11	8
Deaths, per 1,000 population	9	17
Natural increase, per 1,000 population	2	-9
Infants deaths, per 1,000 livebirths	60	0

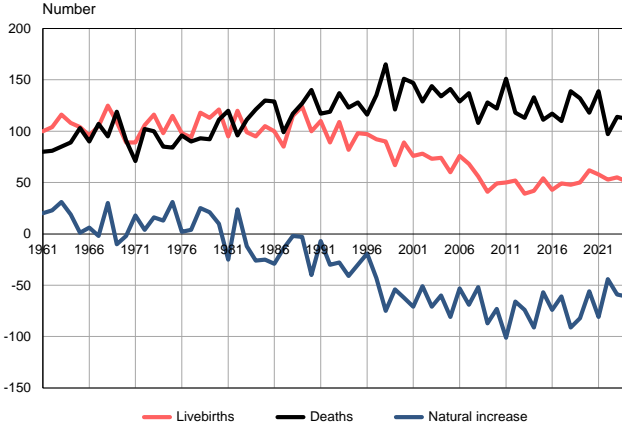
Source: Vital Statistics, * Population estimates, SORS

Population size, 1961–2024



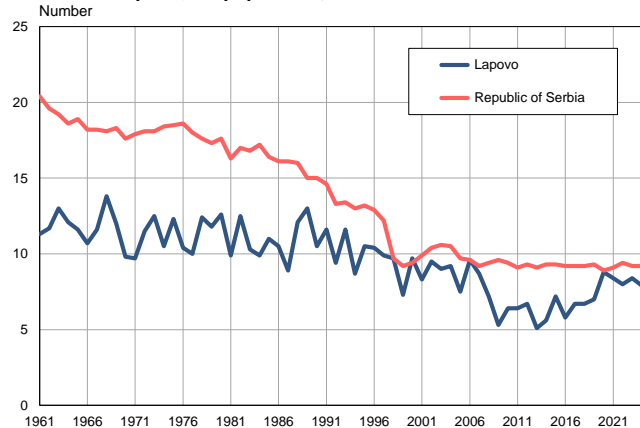
Source: Population estimates, SORS

Livebirths, deaths and natural increase, 1961–2024



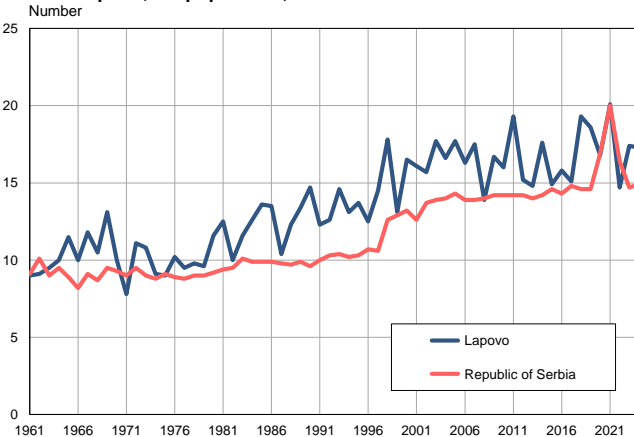
Source: Vital Statistics, SORS

Livebirths per 1,000 population, 1961–2024



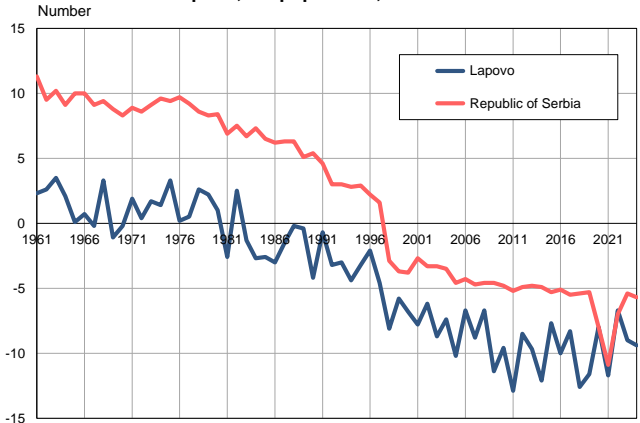
Source: Vital Statistics, SORS

Deaths per 1,000 population, 1961–2024



Source: Vital Statistics, SORS

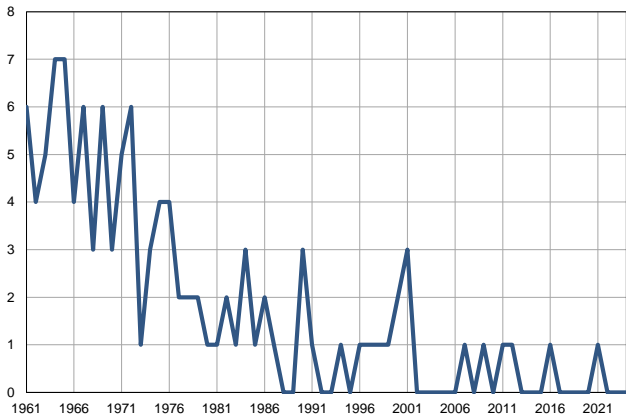
Natural increase per 1,000 population, 1961–2024



Source: Vital Statistics, SORS

Infants deaths, 1961–2024

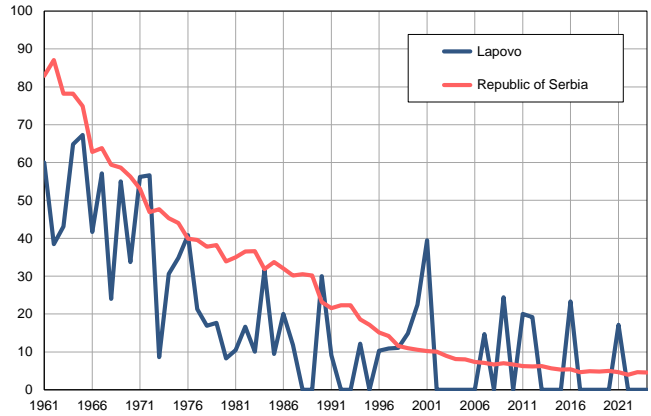
Number



Source: Vital Statistics, SORS

Infants deaths per 1,000 livebirths, 1961–2024

Number



Source: Vital Statistics, SORS

Table. Natural changes of population, Lapovo

Year	Population size*	Livebirths	Deaths	Natural increase	Infants deaths	per 1000 population			Infant deaths per 1000 livebirths
						Livebirths	Deaths	Natural increase	
1961	8850	100	80	20	6	11.3	9.0	2.3	60.0
1962	8881	104	81	23	4	11.7	9.1	2.6	38.5
1963	8911	116	85	31	5	13.0	9.5	3.5	43.1
1964	8941	108	89	19	7	12.1	10.0	2.1	64.8
1965	8972	104	103	1	7	11.6	11.5	0.1	67.3
1966	9003	96	90	6	4	10.7	10.0	0.7	41.7
1967	9034	105	107	-2	6	11.6	11.8	-0.2	57.1
1968	9065	125	95	30	3	13.8	10.5	3.3	24.0
1969	9095	109	119	-10	6	12.0	13.1	-1.1	55.0
1970	9125	89	91	-2	3	9.8	10.0	-0.2	33.7
1971	9156	89	71	18	5	9.7	7.8	1.9	56.2
1972	9204	106	102	4	6	11.5	11.1	0.4	56.6
1973	9251	116	100	16	1	12.5	10.8	1.7	8.6
1974	9299	98	85	13	3	10.5	9.1	1.4	30.6
1975	9346	115	84	31	4	12.3	9.0	3.3	34.8
1976	9394	98	96	2	4	10.4	10.2	0.2	40.8
1977	9441	94	90	4	2	10.0	9.5	0.5	21.3
1978	9489	118	93	25	2	12.4	9.8	2.6	16.9
1979	9536	113	92	21	2	11.8	9.6	2.2	17.7
1980	9583	121	111	10	1	12.6	11.6	1.0	8.3
1981	9631	95	120	-25	1	9.9	12.5	-2.6	10.5
1982	9616	120	96	24	2	12.5	10.0	2.5	16.7
1983	9601	99	111	-12	1	10.3	11.6	-1.3	10.1
1984	9586	95	121	-26	3	9.9	12.6	-2.7	31.6
1985	9570	105	130	-25	1	11.0	13.6	-2.6	9.5
1986	9556	100	129	-29	2	10.5	13.5	-3.0	20.0
1987	9540	85	99	-14	1	8.9	10.4	-1.5	11.8
1988	9524	115	117	-2	0	12.1	12.3	-0.2	0.0
1989	9510	124	127	-3	0	13.0	13.4	-0.4	0.0
1990	9494	100	140	-40	3	10.5	14.7	-4.2	30.0
1991	9480	110	117	-7	1	11.6	12.3	-0.7	9.1
1992	9447	89	119	-30	0	9.4	12.6	-3.2	0.0
1993	9413	109	137	-28	0	11.6	14.6	-3.0	0.0
1994	9379	82	123	-41	1	8.7	13.1	-4.4	12.2
1995	9346	98	128	-30	0	10.5	13.7	-3.2	0.0
1996	9312	97	116	-19	1	10.4	12.5	-2.1	10.3
1997	9279	92	135	-43	1	9.9	14.5	-4.6	10.9
1998	9245	90	165	-75	1	9.7	17.8	-8.1	11.1
1999	9213	67	121	-54	1	7.3	13.1	-5.8	14.9
2000	9178	89	151	-62	2	9.7	16.5	-6.8	22.5
2001	9144	76	147	-71	3	8.3	16.1	-7.8	39.5
2002	8214	78	129	-51	0	9.5	15.7	-6.2	0.0
2003	8132	73	144	-71	0	9.0	17.7	-8.7	0.0
2004	8055	74	134	-60	0	9.2	16.6	-7.4	0.0
2005	7977	60	141	-81	0	7.5	17.7	-10.2	0.0

Table. Natural changes of population, Lapovo

Year	Population size*	Livebirths	Deaths	Natural increase	Infants deaths	per 1000 population			Infant deaths per 1000 livebirths
						Livebirths	Deaths	Natural increase	
2006	7905	76	129	-53	0	9.6	16.3	-6.7	0.0
2007	7844	68	137	-69	1	8.7	17.5	-8.8	14.7
2008	7757	56	108	-52	0	7.2	13.9	-6.7	0.0
2009	7677	41	128	-87	1	5.3	16.7	-11.4	24.4
2010	7602	49	122	-73	0	6.4	16.0	-9.6	0.0
2011	7842	50	151	-101	1	6.4	19.3	-12.9	20.0
2012	7738	52	118	-66	1	6.7	15.2	-8.5	19.2
2013	7650	39	113	-74	0	5.1	14.8	-9.7	0.0
2014	7550	42	133	-91	0	5.6	17.6	-12.1	0.0
2015	7466	54	111	-57	0	7.2	14.9	-7.7	0.0
2016	7390	43	117	-74	1	5.8	15.8	-10.0	23.3
2017	7307	49	110	-61	0	6.7	15.1	-8.3	0.0
2018	7210	48	139	-91	0	6.7	19.3	-12.6	0.0
2019	7095	50	132	-82	0	7.0	18.6	-11.6	0.0
2020	7009	62	118	-56	0	8.8	16.8	-8.0	0.0
2021	6921	58	139	-81	1	8.4	20.1	-11.7	17.2
2022	6595	53	97	-44	0	8.0	14.7	-6.7	0.0
2023	6541	55	114	-59	0	8.4	17.4	-9.0	0.0
2024	6480	51	112	-61	0	7.9	17.3	-9.4	0.0

Source: Vital Statistics, * Population estimates, SORS

Definitions

Population size

Number of population in the respective year. The data on the number of population in 1961, 1971, 1981 and 1991 are census data, while for the inter-census years the number of population was calculated as an average inter-census difference. From 2002 are given the population estimates that were calculated according to the census of population results and the annual statistics of natural mechanical population movements.

Livebirths

Absolute number of live births in the course of a year. Live born child means a child giving vital signs after birth (breathing, i.e. heartbeat), even for the shortest time, regardless the mother's pregnancy duration.

Deaths

Absolute number of deaths in the course of a year. Deceased is a person that whenever after having been born live, shows permanently stopped vital signs.

Natural increase

Natural population increase is the number of live births minus the number of deaths.

Infants deaths

Absolute number of infants deaths in the course of a year. Deceased infant is a child that after having been born live and before aged one year, shows permanently stopped vital signs.

Livebirths, per 1 000 population

Livebirths rate is the ratio of the number of live births and the population size in the respective year. The number of live births is divided by the population size and then multiplied by 1000.

Deaths, per 1 000 population

General mortality rate represents the ratio between the number of deaths and the population size in the respective year. The number of deaths is divided by population size and then multiplied by 1000.

Natural increase, per 1 000 population

Natural population increase rate is the difference between the number of live births and the number of deaths, in relation to the population size in the respective year.

Natural population increase rate = (number of live births - number of deaths) / population size * 1000

Infants deaths, per 1 000 livebirths

Infant mortality rate is the ratio of deceased children under 1 year of age and live births in the respective year. The mortality rate is expressed per 1000 live births.

Infant mortality rate = (number of deceased children under 1 year of age / number of live births) * 1000

Additional info:



Download all database data in Excel format:

[Data](#)



DevInfo profiles:

devinfo.stat.gov.rs/SerbiaProfileLauncher/?lang=en



DevInfo online database:

devinfo.stat.gov.rs/vitalna



For additional information or questions please contact:

devinfo@stat.gov.rs