

Natural changes of population 1961 – 2024

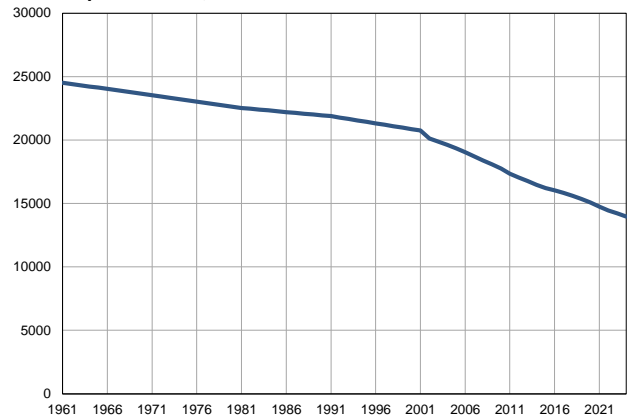
Profile
July 2025

Krupanj

	1961	2024
Population size*	24520	13972
Livebirths, Number	555	97
Deaths, Number	229	220
Natural increase, Number	326	-123
Infants deaths, Number	39	1
Livebirths, per 1,000 population	23	7
Deaths, per 1,000 population	9	16
Natural increase, per 1,000 population	13	-9
Infants deaths, per 1,000 livebirths	70	10

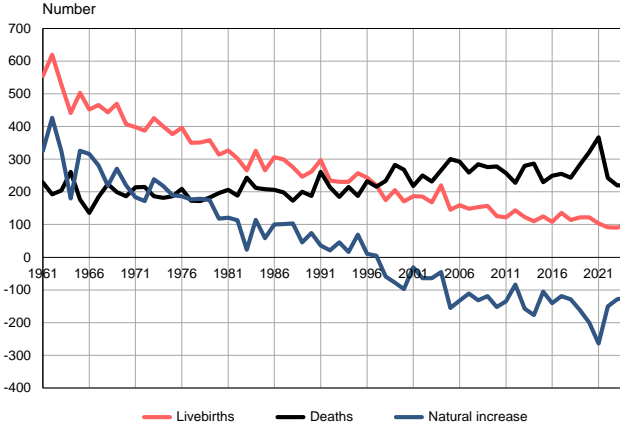
Source: Vital Statistics, * Population estimates, SORS

Population size, 1961–2024



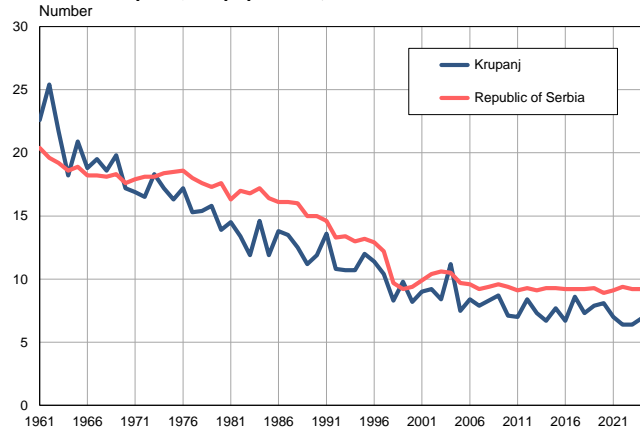
Source: Population estimates, SORS

Livebirths, deaths and natural increase, 1961–2024



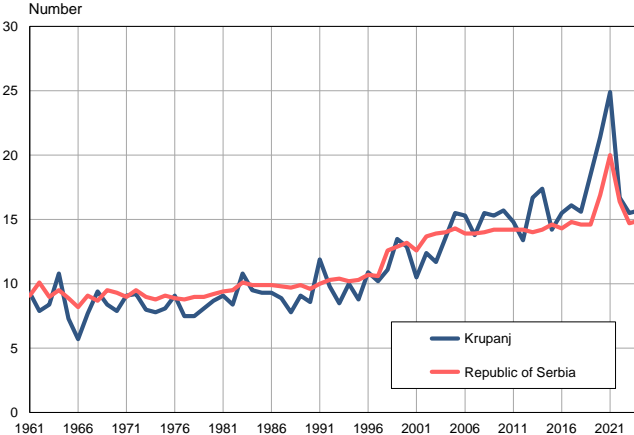
Source: Vital Statistics, SORS

Livebirths per 1,000 population, 1961–2024



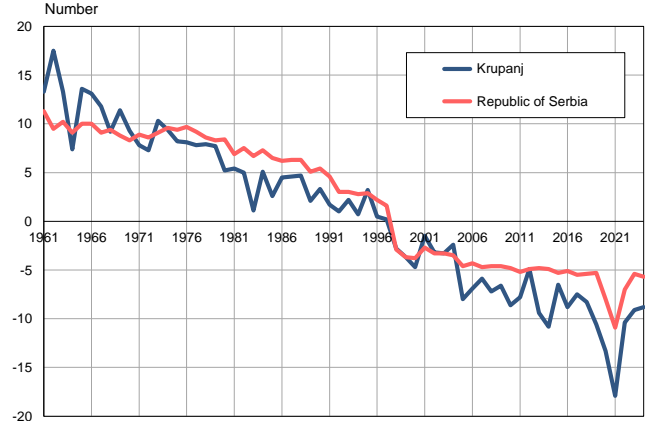
Source: Vital Statistics, SORS

Deaths per 1,000 population, 1961–2024



Source: Vital Statistics, SORS

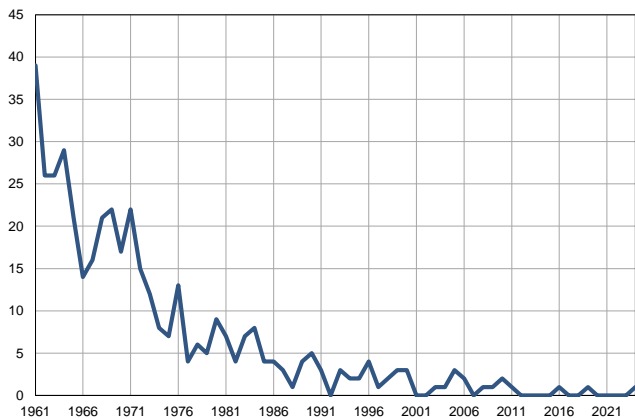
Natural increase per 1,000 population, 1961–2024



Source: Vital Statistics, SORS

Infants deaths, 1961–2024

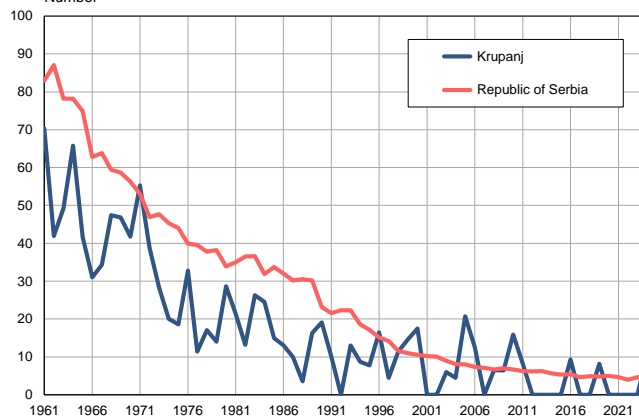
Number



Source: Vital Statistics, SORS

Infants deaths per 1,000 livebirths, 1961–2024

Number



Source: Vital Statistics, SORS

Table. Natural changes of population, Krupanj

Year	Population size*	Livebirths	Deaths	Natural increase	Infants deaths	per 1000 population			Infant deaths per 1000 livebirths
						Livebirths	Deaths	Natural increase	
1961	24520	555	229	326	39	22.6	9.3	13.3	70.3
1962	24421	620	193	427	26	25.4	7.9	17.5	41.9
1963	24322	528	204	324	26	21.7	8.4	13.3	49.2
1964	24223	441	261	180	29	18.2	10.8	7.4	65.8
1965	24124	503	177	326	21	20.9	7.3	13.6	41.7
1966	24024	452	136	316	14	18.8	5.7	13.1	31.0
1967	23925	466	185	281	16	19.5	7.7	11.8	34.3
1968	23826	443	224	219	21	18.6	9.4	9.2	47.4
1969	23727	470	199	271	22	19.8	8.4	11.4	46.8
1970	23628	407	187	220	17	17.2	7.9	9.3	41.8
1971	23529	398	214	184	22	16.9	9.1	7.8	55.3
1972	23430	387	215	172	15	16.5	9.2	7.3	38.8
1973	23330	426	187	239	12	18.3	8.0	10.3	28.2
1974	23229	400	182	218	8	17.2	7.8	9.4	20.0
1975	23129	377	187	190	7	16.3	8.1	8.2	18.6
1976	23030	396	209	187	13	17.2	9.1	8.1	32.8
1977	22930	350	173	177	4	15.3	7.5	7.8	11.4
1978	22830	351	172	179	6	15.4	7.5	7.9	17.1
1979	22730	358	183	175	5	15.8	8.1	7.7	14.0
1980	22630	314	196	118	9	13.9	8.7	5.2	28.7
1981	22530	327	206	121	7	14.5	9.1	5.4	21.4
1982	22465	302	189	113	4	13.4	8.4	5.0	13.2
1983	22400	266	243	23	7	11.9	10.8	1.1	26.3
1984	22335	326	212	114	8	14.6	9.5	5.1	24.5
1985	22270	266	208	58	4	11.9	9.3	2.6	15.0
1986	22205	306	206	100	4	13.8	9.3	4.5	13.1
1987	22139	299	198	101	3	13.5	8.9	4.6	10.0
1988	22074	276	173	103	1	12.5	7.8	4.7	3.6
1989	22009	246	200	46	4	11.2	9.1	2.1	16.3
1990	21943	262	188	74	5	11.9	8.6	3.3	19.1
1991	21879	297	261	36	3	13.6	11.9	1.7	10.1
1992	21764	235	214	21	0	10.8	9.8	1.0	0.0
1993	21651	231	185	46	3	10.7	8.5	2.2	13.0
1994	21537	231	215	16	2	10.7	10.0	0.7	8.7
1995	21424	257	188	69	2	12.0	8.8	3.2	7.8
1996	21310	243	233	10	4	11.4	10.9	0.5	16.5
1997	21198	220	216	4	1	10.4	10.2	0.2	4.5
1998	21083	175	234	-59	2	8.3	11.1	-2.8	11.4
1999	20970	205	283	-78	3	9.8	13.5	-3.7	14.6
2000	20856	171	268	-97	3	8.2	12.9	-4.7	17.5
2001	20743	187	218	-31	0	9.0	10.5	-1.5	0.0
2002	20123	186	250	-64	0	9.2	12.4	-3.2	0.0
2003	19883	168	232	-64	1	8.4	11.7	-3.3	6.0
2004	19620	220	266	-46	1	11.2	13.6	-2.4	4.5
2005	19334	145	300	-155	3	7.5	15.5	-8.0	20.7

Table. Natural changes of population, Krupanj

Year	Population size*	Livebirths	Deaths	Natural increase	Infants deaths	per 1000 population			Infant deaths per 1000 livebirths
						Livebirths	Deaths	Natural increase	
2006	19032	159	292	-133	2	8.4	15.3	-6.9	12.6
2007	18722	148	259	-111	0	7.9	13.8	-5.9	0.0
2008	18381	153	285	-132	1	8.3	15.5	-7.2	6.5
2009	18071	157	276	-119	1	8.7	15.3	-6.6	6.4
2010	17751	126	278	-152	2	7.1	15.7	-8.6	15.9
2011	17344	122	257	-135	1	7.0	14.8	-7.8	8.2
2012	17046	144	228	-84	0	8.4	13.4	-4.9	0.0
2013	16760	123	280	-157	0	7.3	16.7	-9.4	0.0
2014	16459	110	287	-177	0	6.7	17.4	-10.8	0.0
2015	16226	125	230	-105	0	7.7	14.2	-6.5	0.0
2016	16038	108	249	-141	1	6.7	15.5	-8.8	9.3
2017	15825	136	255	-119	0	8.6	16.1	-7.5	0.0
2018	15602	114	243	-129	0	7.3	15.6	-8.3	0.0
2019	15358	122	284	-162	1	7.9	18.5	-10.6	8.2
2020	15079	122	322	-200	0	8.1	21.4	-13.3	0.0
2021	14759	103	367	-264	0	7.0	24.9	-17.9	0.0
2022	14450	92	242	-150	0	6.4	16.7	-10.4	0.0
2023	14208	91	220	-129	0	6.4	15.5	-9.1	0.0
2024	13972	97	220	-123	1	6.9	15.7	-8.8	10.3

Source: Vital Statistics, * Population estimates, SORS

Definitions

Population size

Number of population in the respective year. The data on the number of population in 1961, 1971, 1981 and 1991 are census data, while for the inter-census years the number of population was calculated as an average inter-census difference. From 2002 are given the population estimates that were calculated according to the census of population results and the annual statistics of natural mechanical population movements.

Livebirths

Absolute number of live births in the course of a year. Live born child means a child giving vital signs after birth (breathing, i.e. heartbeat), even for the shortest time, regardless the mother's pregnancy duration.

Deaths

Absolute number of deaths in the course of a year. Deceased is a person that whenever after having been born live, shows permanently stopped vital signs.

Natural increase

Natural population increase is the number of live births minus the number of deaths.

Infants deaths

Absolute number of infants deaths in the course of a year. Deceased infant is a child that after having been born live and before aged one year, shows permanently stopped vital signs.

Livebirths, per 1 000 population

Livebirths rate is the ratio of the number of live births and the population size in the respective year. The number of live births is divided by the population size and then multiplied by 1000.

Deaths, per 1 000 population

General mortality rate represents the ratio between the number of deaths and the population size in the respective year. The number of deaths is divided by population size and then multiplied by 1000.

Natural increase, per 1 000 population

Natural population increase rate is the difference between the number of live births and the number of deaths, in relation to the population size in the respective year.

Natural population increase rate = (number of live births - number of deaths) / population size * 1000

Infants deaths, per 1 000 livebirths

Infant mortality rate is the ratio of deceased children under 1 year of age and live births in the respective year. The mortality rate is expressed per 1000 live births.

Infant mortality rate = (number of deceased children under 1 year of age / number of live births) * 1000

Additional info:



Download all database data in Excel format:

[Data](#)



DevInfo profiles:

devinfo.stat.gov.rs/SerbiaProfileLauncher/?lang=en



DevInfo online database:

devinfo.stat.gov.rs/vitalna



For additional information or questions please contact:

devinfo@stat.gov.rs