

Natural changes of population 1961 – 2024

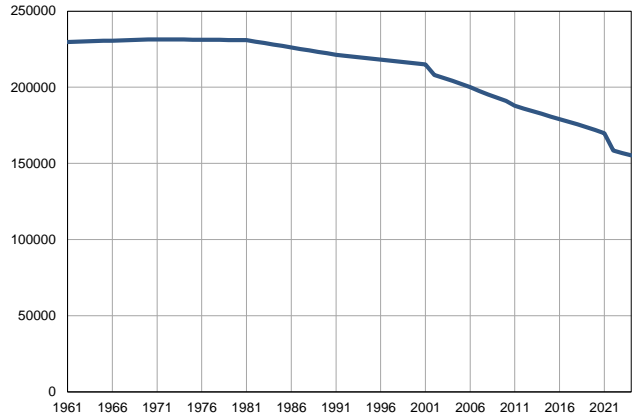
Profile
July 2025

Central Banat

	1961	2024
Population size*	229812	155233
Livebirths, Number	3780	1346
Deaths, Number	2013	2758
Natural increase, Number	1767	-1412
Infants deaths, Number	241	3
Livebirths, per 1,000 population	16	9
Deaths, per 1,000 population	9	18
Natural increase, per 1,000 population	8	-9
Infants deaths, per 1,000 livebirths	64	2

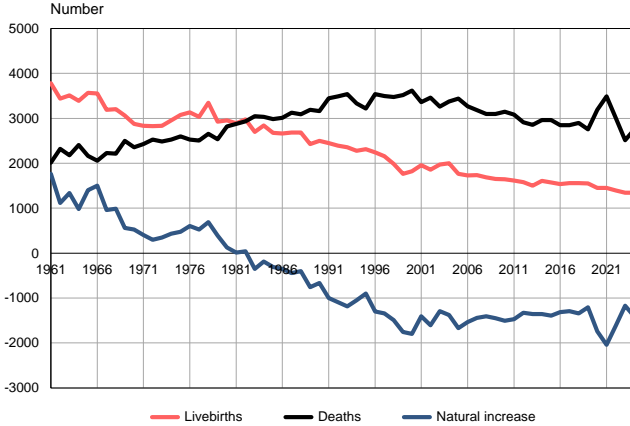
Source: Vital Statistics, * Population estimates, SORS

Population size, 1961–2024



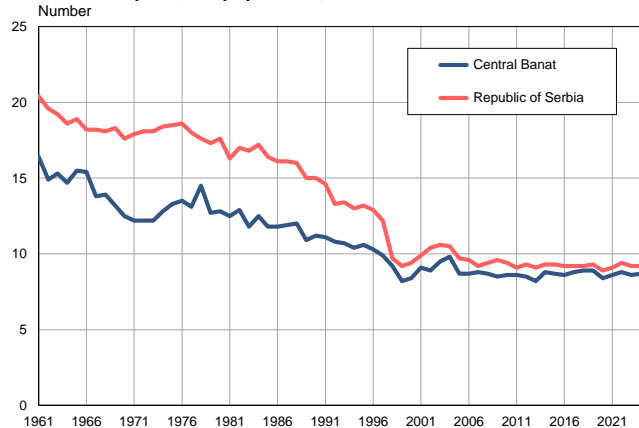
Source: Population estimates, SORS

Livebirths, deaths and natural increase, 1961–2024



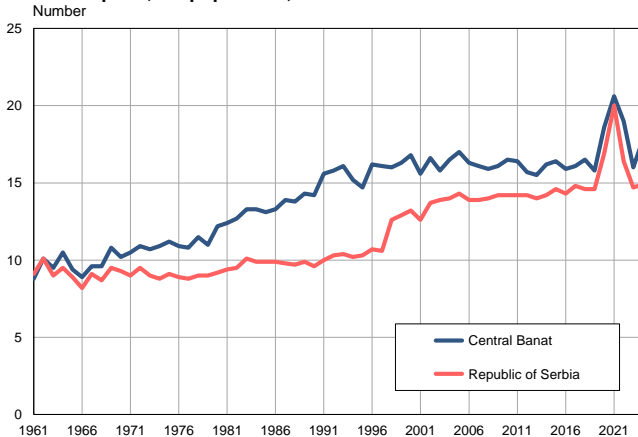
Source: Vital Statistics, SORS

Livebirths per 1,000 population, 1961–2024



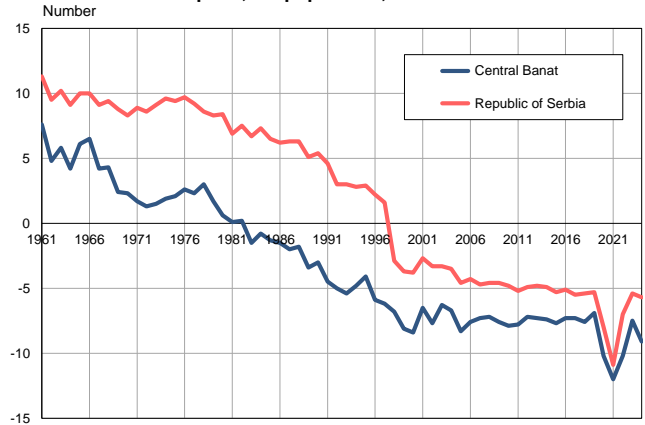
Source: Vital Statistics, SORS

Deaths per 1,000 population, 1961–2024



Source: Vital Statistics, SORS

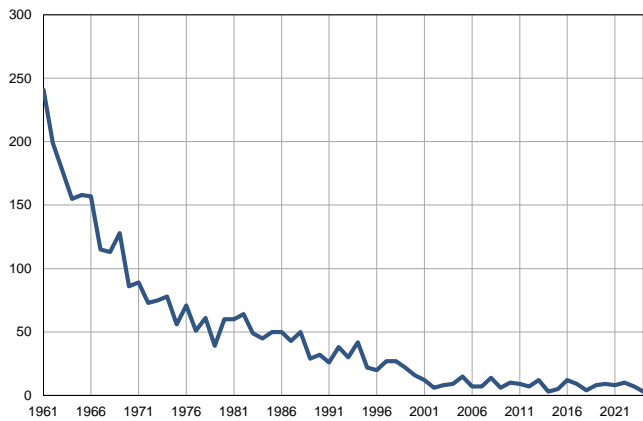
Natural increase per 1,000 population, 1961–2024



Source: Vital Statistics, SORS

Infants deaths, 1961–2024

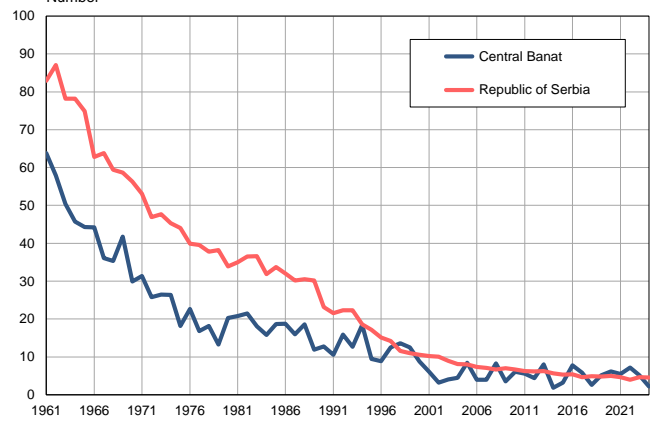
Number



Source: Vital Statistics, SORS

Infants deaths per 1,000 livebirths, 1961–2024

Number



Source: Vital Statistics, SORS

Table. Natural changes of population, Central Banat

Year	Population size*	Livebirths	Deaths	Natural increase	Infants deaths	per 1000 population			Infant deaths per 1000 livebirths
						Livebirths	Deaths	Natural increase	
1961	229812	3780	2013	1767	241	16.4	8.8	7.6	63.8
1962	229979	3436	2319	1117	199	14.9	10.1	4.8	57.9
1963	230147	3512	2176	1336	177	15.3	9.5	5.8	50.4
1964	230314	3388	2409	979	155	14.7	10.5	4.2	45.7
1965	230482	3565	2165	1400	158	15.5	9.4	6.1	44.3
1966	230649	3555	2056	1499	157	15.4	8.9	6.5	44.2
1967	230816	3188	2226	962	115	13.8	9.6	4.2	36.1
1968	230984	3201	2211	990	113	13.9	9.6	4.3	35.3
1969	231151	3062	2500	562	128	13.2	10.8	2.4	41.8
1970	231319	2880	2358	522	86	12.5	10.2	2.3	29.9
1971	231486	2833	2428	405	89	12.2	10.5	1.7	31.4
1972	231434	2828	2531	297	73	12.2	10.9	1.3	25.8
1973	231381	2833	2484	349	75	12.2	10.7	1.5	26.5
1974	231329	2954	2524	430	78	12.8	10.9	1.9	26.4
1975	231276	3075	2601	474	56	13.3	11.2	2.1	18.2
1976	231224	3133	2531	602	71	13.5	10.9	2.6	22.7
1977	231172	3032	2507	525	51	13.1	10.8	2.3	16.8
1978	231119	3346	2659	687	61	14.5	11.5	3.0	18.2
1979	231067	2925	2534	391	39	12.7	11.0	1.7	13.3
1980	231014	2952	2823	129	60	12.8	12.2	0.6	20.3
1981	230962	2890	2874	16	60	12.5	12.4	0.1	20.8
1982	230001	2975	2932	43	64	12.9	12.7	0.2	21.5
1983	229040	2702	3051	-349	49	11.8	13.3	-1.5	18.1
1984	228079	2842	3031	-189	45	12.5	13.3	-0.8	15.8
1985	227118	2675	2986	-311	50	11.8	13.1	-1.3	18.7
1986	226158	2665	3015	-350	50	11.8	13.3	-1.5	18.8
1987	225197	2684	3125	-441	43	11.9	13.9	-2.0	16.0
1988	224236	2685	3089	-404	50	12.0	13.8	-1.8	18.6
1989	223275	2430	3187	-757	29	10.9	14.3	-3.4	11.9
1990	222314	2497	3160	-663	32	11.2	14.2	-3.0	12.8
1991	221353	2448	3449	-1001	26	11.1	15.6	-4.5	10.6
1992	220718	2394	3488	-1094	38	10.8	15.8	-5.0	15.9
1993	220083	2355	3541	-1186	30	10.7	16.1	-5.4	12.7
1994	219447	2279	3329	-1050	42	10.4	15.2	-4.8	18.4
1995	218812	2316	3217	-901	22	10.6	14.7	-4.1	9.5
1996	218177	2241	3539	-1298	20	10.3	16.2	-5.9	8.9
1997	217542	2158	3496	-1338	27	9.9	16.1	-6.2	12.5
1998	216907	1985	3477	-1492	27	9.2	16.0	-6.8	13.6
1999	216271	1763	3516	-1753	22	8.2	16.3	-8.1	12.5
2000	215636	1821	3621	-1800	16	8.4	16.8	-8.4	8.8
2001	215001	1956	3363	-1407	12	9.1	15.6	-6.5	6.1
2002	208103	1856	3459	-1603	6	8.9	16.6	-7.7	3.2
2003	206278	1969	3263	-1294	8	9.5	15.8	-6.3	4.1
2004	204382	1997	3373	-1376	9	9.8	16.5	-6.7	4.5
2005	202286	1767	3438	-1671	15	8.7	17.0	-8.3	8.5

Table. Natural changes of population, Central Banat

Year	Population size*	Livebirths	Deaths	Natural increase	Infants deaths	per 1000 population			Infant deaths per 1000 livebirths
						Livebirths	Deaths	Natural increase	
2006	199999	1731	3266	-1535	7	8.7	16.3	-7.6	4.0
2007	197585	1736	3180	-1444	7	8.8	16.1	-7.3	4.0
2008	195190	1690	3098	-1408	14	8.7	15.9	-7.2	8.3
2009	193067	1649	3099	-1450	6	8.5	16.1	-7.6	3.6
2010	191031	1642	3144	-1502	10	8.6	16.5	-7.9	6.1
2011	187860	1613	3081	-1468	9	8.6	16.4	-7.8	5.6
2012	186013	1583	2913	-1330	7	8.5	15.7	-7.2	4.4
2013	184311	1505	2858	-1353	12	8.2	15.5	-7.3	8.0
2014	182555	1606	2964	-1358	3	8.8	16.2	-7.4	1.9
2015	180772	1571	2960	-1389	5	8.7	16.4	-7.7	3.2
2016	178995	1538	2850	-1312	12	8.6	15.9	-7.3	7.8
2017	177308	1561	2849	-1288	9	8.8	16.1	-7.3	5.8
2018	175623	1557	2897	-1340	4	8.9	16.5	-7.6	2.6
2019	173873	1548	2753	-1205	8	8.9	15.8	-6.9	5.2
2020	171988	1449	3191	-1742	9	8.4	18.6	-10.2	6.2
2021	169757	1454	3492	-2038	8	8.6	20.6	-12.0	5.5
2022	158367	1395	3008	-1613	10	8.8	19.0	-10.2	7.2
2023	156713	1347	2515	-1168	7	8.6	16.0	-7.5	5.2
2024	155233	1346	2758	-1412	3	8.7	17.8	-9.1	2.2

Source: Vital Statistics, * Population estimates, SORS

Definitions

Population size

Number of population in the respective year. The data on the number of population in 1961, 1971, 1981 and 1991 are census data, while for the inter-census years the number of population was calculated as an average inter-census difference. From 2002 are given the population estimates that were calculated according to the census of population results and the annual statistics of natural mechanical population movements.

Livebirths

Absolute number of live births in the course of a year. Live born child means a child giving vital signs after birth (breathing, i.e. heartbeat), even for the shortest time, regardless the mother's pregnancy duration.

Deaths

Absolute number of deaths in the course of a year. Deceased is a person that whenever after having been born live, shows permanently stopped vital signs.

Natural increase

Natural population increase is the number of live births minus the number of deaths.

Infants deaths

Absolute number of infants deaths in the course of a year. Deceased infant is a child that after having been born live and before aged one year, shows permanently stopped vital signs.

Livebirths, per 1 000 population

Livebirths rate is the ratio of the number of live births and the population size in the respective year. The number of live births is divided by the population size and then multiplied by 1000.

Deaths, per 1 000 population

General mortality rate represents the ratio between the number of deaths and the population size in the respective year. The number of deaths is divided by population size and then multiplied by 1000.

Natural increase, per 1 000 population

Natural population increase rate is the difference between the number of live births and the number of deaths, in relation to the population size in the respective year.

Natural population increase rate = (number of live births - number of deaths) / population size * 1000

Infants deaths, per 1 000 livebirths

Infant mortality rate is the ratio of deceased children under 1 year of age and live births in the respective year. The mortality rate is expressed per 1000 live births.

Infant mortality rate = (number of deceased children under 1 year of age / number of live births) * 1000

Additional info:



Download all database data in Excel format:

[Data](#)



DevInfo profiles:

devinfo.stat.gov.rs/SerbiaProfileLauncher/?lang=en



DevInfo online database:

devinfo.stat.gov.rs/vitalna



For additional information or questions please contact:

devinfo@stat.gov.rs