

# Natural changes of population 1961 – 2024

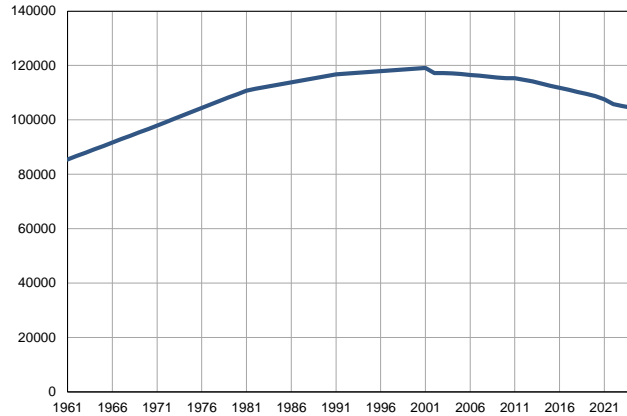
Profile  
July 2025

## Čačak

	1961	2024
Population size*	85439	104473
Livebirths, Number	1406	970
Deaths, Number	623	1588
Natural increase, Number	783	-618
Infants deaths, Number	74	4
Livebirths, per 1,000 population	17	9
Deaths, per 1,000 population	7	15
Natural increase, per 1,000 population	9	-6
Infants deaths, per 1,000 livebirths	53	4

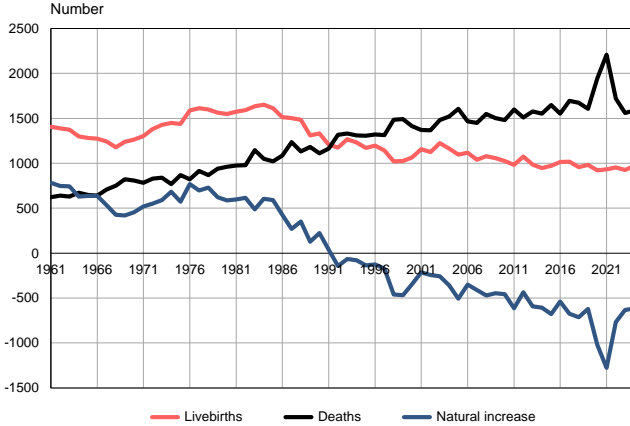
Source: Vital Statistics, \* Population estimates, SORS

Population size, 1961–2024



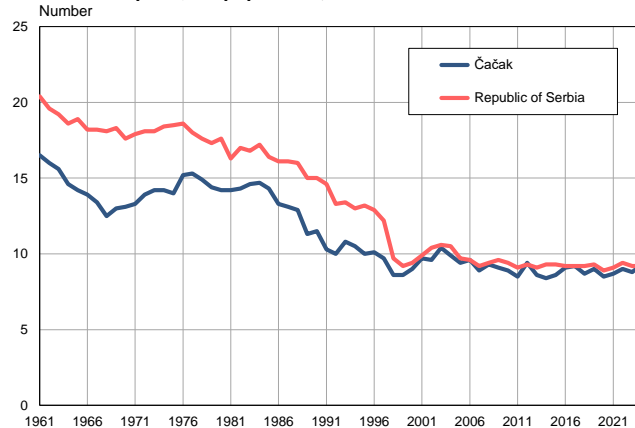
Source: Population estimates, SORS

Livebirths, deaths and natural increase, 1961–2024



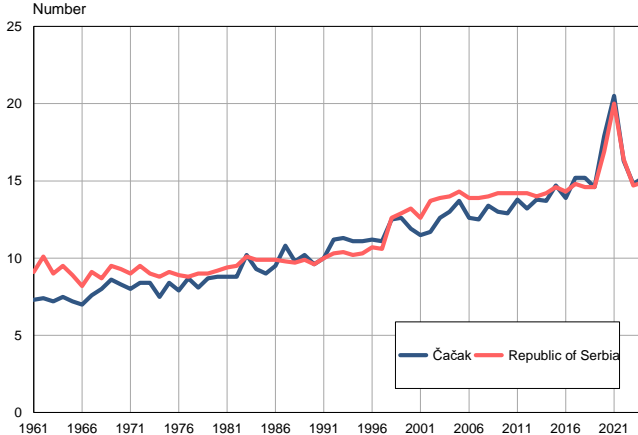
Source: Vital Statistics, SORS

Livebirths per 1,000 population, 1961–2024



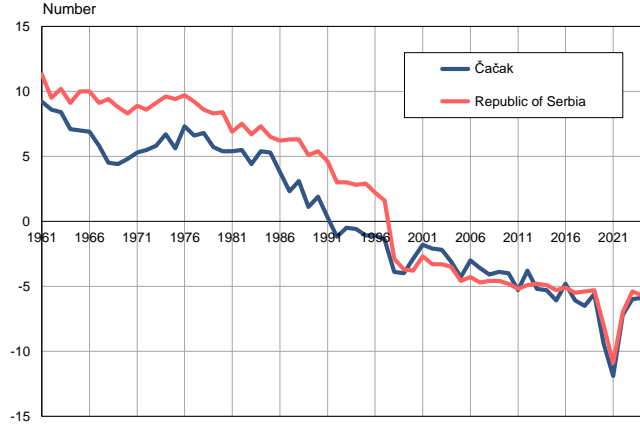
Source: Vital Statistics, SORS

Deaths per 1,000 population, 1961–2024



Source: Vital Statistics, SORS

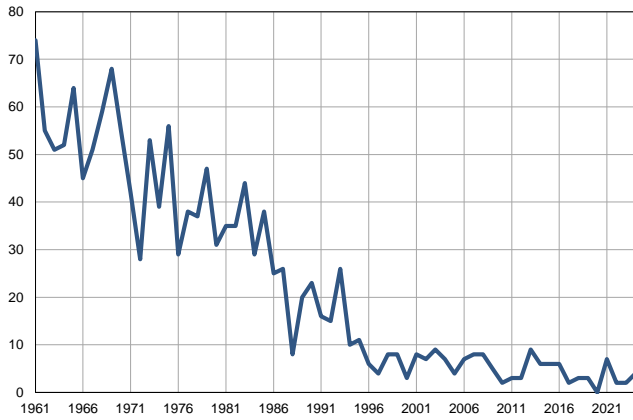
Natural increase per 1,000 population, 1961–2024



Source: Vital Statistics, SORS

**Infants deaths, 1961–2024**

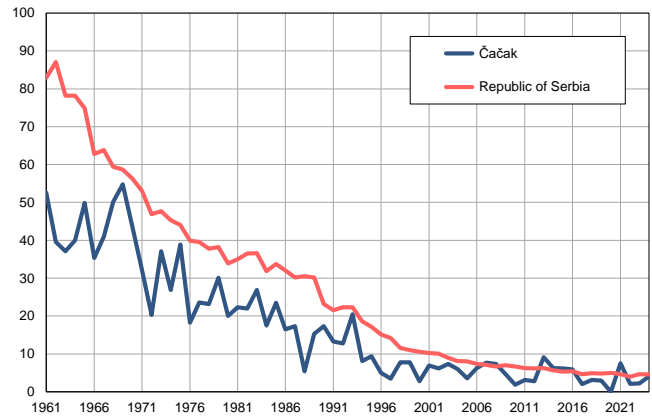
Number



Source: Vital Statistics, SORS

**Infants deaths per 1,000 livebirths, 1961–2024**

Number



Source: Vital Statistics, SORS

**Table. Natural changes of population, Čačak**

Year	Population size*	Livebirths	Deaths	Natural increase	Infants deaths	per 1000 population			Infant deaths per 1000 livebirths
						Livebirths	Deaths	Natural increase	
1961	85439	1406	623	783	74	16.5	7.3	9.2	52.6
1962	86688	1388	642	746	55	16.0	7.4	8.6	39.6
1963	87936	1373	629	744	51	15.6	7.2	8.4	37.1
1964	89184	1301	671	630	52	14.6	7.5	7.1	40.0
1965	90433	1283	648	635	64	14.2	7.2	7.0	49.9
1966	91681	1275	640	635	45	13.9	7.0	6.9	35.3
1967	92930	1243	709	534	51	13.4	7.6	5.8	41.0
1968	94179	1178	751	427	59	12.5	8.0	4.5	50.1
1969	95426	1240	822	418	68	13.0	8.6	4.4	54.8
1970	96676	1262	806	456	55	13.1	8.3	4.8	43.6
1971	97924	1303	783	520	42	13.3	8.0	5.3	32.2
1972	99212	1382	830	552	28	13.9	8.4	5.5	20.3
1973	100500	1429	840	589	53	14.2	8.4	5.8	37.1
1974	101787	1450	767	683	39	14.2	7.5	6.7	26.9
1975	103075	1439	867	572	56	14.0	8.4	5.6	38.9
1976	104363	1589	822	767	29	15.2	7.9	7.3	18.3
1977	105650	1612	914	698	38	15.3	8.7	6.6	23.6
1978	106938	1597	867	730	37	14.9	8.1	6.8	23.2
1979	108226	1563	941	622	47	14.4	8.7	5.7	30.1
1980	109513	1550	962	588	31	14.2	8.8	5.4	20.0
1981	110801	1573	976	597	35	14.2	8.8	5.4	22.3
1982	111402	1593	979	614	35	14.3	8.8	5.5	22.0
1983	112002	1634	1147	487	44	14.6	10.2	4.4	26.9
1984	112603	1653	1049	604	29	14.7	9.3	5.4	17.5
1985	113204	1614	1022	592	38	14.3	9.0	5.3	23.5
1986	113805	1512	1086	426	25	13.3	9.5	3.8	16.5
1987	114406	1504	1234	270	26	13.1	10.8	2.3	17.3
1988	115007	1483	1132	351	8	12.9	9.8	3.1	5.4
1989	115607	1311	1182	129	20	11.3	10.2	1.1	15.3
1990	116207	1332	1110	222	23	11.5	9.6	1.9	17.3
1991	116808	1205	1165	40	16	10.3	10.0	0.3	13.3
1992	117041	1173	1316	-143	15	10.0	11.2	-1.2	12.8
1993	117275	1266	1331	-65	26	10.8	11.3	-0.5	20.5
1994	117509	1230	1309	-79	10	10.5	11.1	-0.6	8.1
1995	117742	1172	1307	-135	11	10.0	11.1	-1.1	9.4
1996	117976	1196	1321	-125	6	10.1	11.2	-1.1	5.0
1997	118210	1141	1314	-173	4	9.7	11.1	-1.4	3.5
1998	118443	1023	1484	-461	8	8.6	12.5	-3.9	7.8
1999	118677	1026	1493	-467	8	8.6	12.6	-4.0	7.8
2000	118911	1065	1412	-347	3	9.0	11.9	-2.9	2.8
2001	119144	1158	1372	-214	8	9.7	11.5	-1.8	6.9
2002	117224	1124	1368	-244	7	9.6	11.7	-2.1	6.2
2003	117186	1223	1480	-257	9	10.4	12.6	-2.2	7.4
2004	117115	1164	1520	-356	7	9.9	13.0	-3.1	6.0
2005	116865	1096	1604	-508	4	9.4	13.7	-4.3	3.6

**Table. Natural changes of population, Čačak**

Year	Population size*	Livebirths	Deaths	Natural increase	Infants deaths	per 1000 population			Infant deaths per 1000 livebirths
						Livebirths	Deaths	Natural increase	
2006	116534	1116	1467	-351	7	9.6	12.6	-3.0	6.3
2007	116254	1038	1449	-411	8	8.9	12.5	-3.6	7.7
2008	115918	1077	1548	-471	8	9.3	13.4	-4.1	7.4
2009	115612	1056	1501	-445	5	9.1	13.0	-3.9	4.7
2010	115303	1026	1482	-456	2	8.9	12.9	-4.0	1.9
2011	115351	982	1597	-615	3	8.5	13.8	-5.3	3.1
2012	114763	1074	1510	-436	3	9.4	13.2	-3.8	2.8
2013	114141	985	1577	-592	9	8.6	13.8	-5.2	9.1
2014	113383	948	1553	-605	6	8.4	13.7	-5.3	6.3
2015	112558	973	1649	-676	6	8.6	14.7	-6.1	6.2
2016	111797	1015	1553	-538	6	9.1	13.9	-4.8	5.9
2017	111075	1019	1693	-674	2	9.2	15.2	-6.1	2.0
2018	110279	957	1672	-715	3	8.7	15.2	-6.5	3.1
2019	109568	984	1604	-620	3	9.0	14.6	-5.6	3.0
2020	108737	923	1943	-1020	0	8.5	17.9	-9.4	0.0
2021	107598	933	2209	-1276	7	8.7	20.5	-11.9	7.5
2022	105840	954	1720	-766	2	9.0	16.3	-7.2	2.1
2023	105115	926	1558	-632	2	8.8	14.8	-6.0	2.2
2024	104473	970	1588	-618	4	9.3	15.2	-5.9	4.1

Source: Vital Statistics, \* Population estimates, SORS

## Definitions

### Population size

Number of population in the respective year. The data on the number of population in 1961, 1971, 1981 and 1991 are census data, while for the inter-census years the number of population was calculated as an average inter-census difference. From 2002 are given the population estimates that were calculated according to the census of population results and the annual statistics of natural mechanical population movements.

### Livebirths

Absolute number of live births in the course of a year. Live born child means a child giving vital signs after birth (breathing, i.e. heartbeat), even for the shortest time, regardless the mother's pregnancy duration.

### Deaths

Absolute number of deaths in the course of a year. Deceased is a person that whenever after having been born live, shows permanently stopped vital signs.

### Natural increase

Natural population increase is the number of live births minus the number of deaths.

### Infants deaths

Absolute number of infants deaths in the course of a year. Deceased infant is a child that after having been born live and before aged one year, shows permanently stopped vital signs.

### Livebirths, per 1 000 population

Livebirths rate is the ratio of the number of live births and the population size in the respective year. The number of live births is divided by the population size and then multiplied by 1000.

### Deaths, per 1 000 population

General mortality rate represents the ratio between the number of deaths and the population size in the respective year. The number of deaths is divided by population size and then multiplied by 1000.

### Natural increase, per 1 000 population

Natural population increase rate is the difference between the number of live births and the number of deaths, in relation to the population size in the respective year.

Natural population increase rate = (number of live births - number of deaths) / population size \* 1000

### Infants deaths, per 1 000 livebirths

Infant mortality rate is the ratio of deceased children under 1 year of age and live births in the respective year. The mortality rate is expressed per 1000 live births.

Infant mortality rate = (number of deceased children under 1 year of age / number of live births) \* 1000

## Additional info:



Download all database data in Excel format:

[Data](#)



DevInfo profiles:

[devinfo.stat.gov.rs/SerbiaProfileLauncher/?lang=en](http://devinfo.stat.gov.rs/SerbiaProfileLauncher/?lang=en)



DevInfo online database:

[devinfo.stat.gov.rs/vitalna](http://devinfo.stat.gov.rs/vitalna)



For additional information or questions please contact:

[devinfo@stat.gov.rs](mailto:devinfo@stat.gov.rs)