

Natural changes of population 1961 – 2024

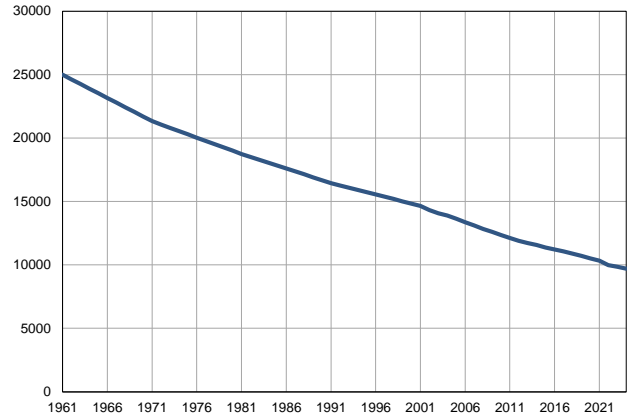
Profile
July 2025

Bela Palanka

	1961	2024
Population size*	24982	9703
Livebirths, Number	337	84
Deaths, Number	230	184
Natural increase, Number	107	-100
Infants deaths, Number	37	2
Livebirths, per 1,000 population	14	9
Deaths, per 1,000 population	9	19
Natural increase, per 1,000 population	4	-10
Infants deaths, per 1,000 livebirths	110	24

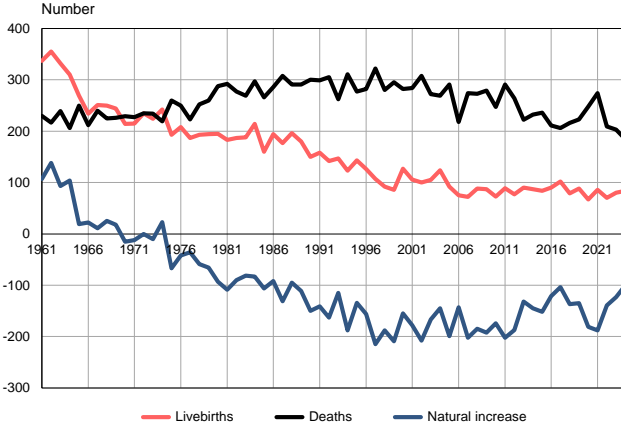
Source: Vital Statistics, * Population estimates, SORS

Population size, 1961–2024



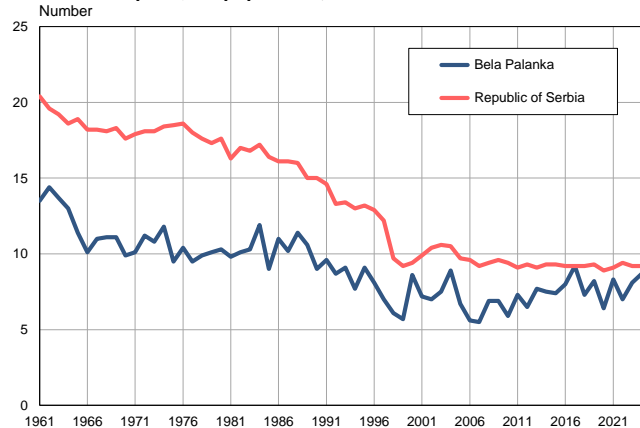
Source: Population estimates, SORS

Livebirths, deaths and natural increase, 1961–2024



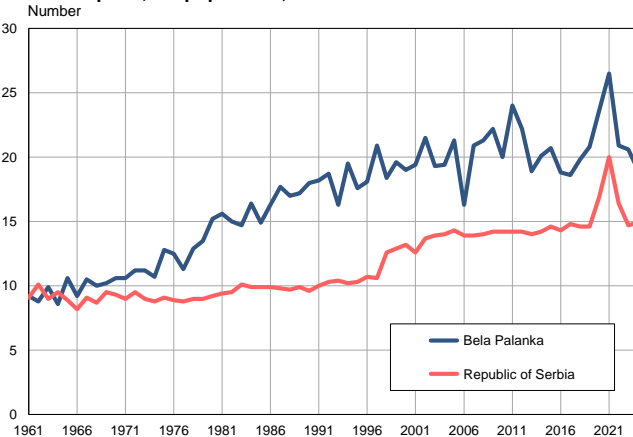
Source: Vital Statistics, SORS

Livebirths per 1,000 population, 1961–2024



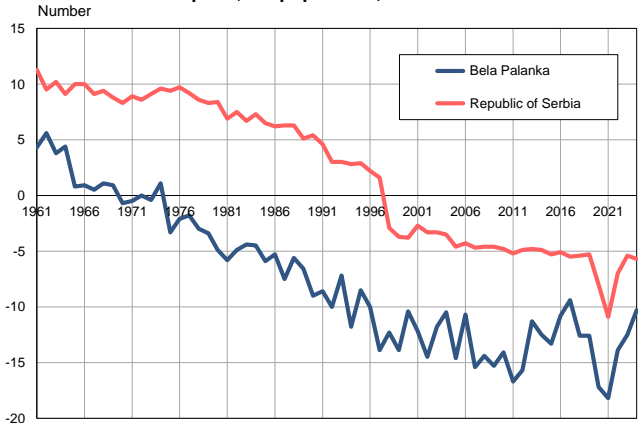
Source: Vital Statistics, SORS

Deaths per 1,000 population, 1961–2024



Source: Vital Statistics, SORS

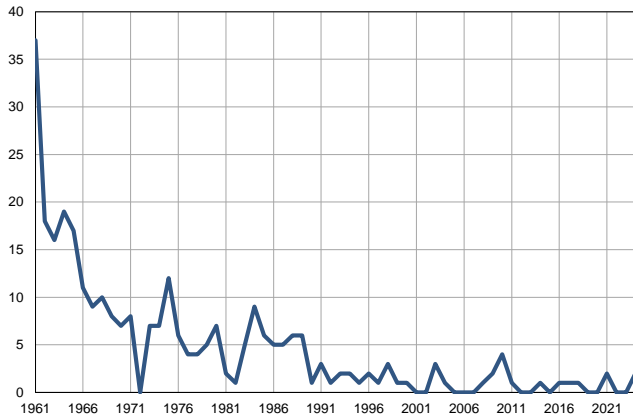
Natural increase per 1,000 population, 1961–2024



Source: Vital Statistics, SORS

Infants deaths, 1961–2024

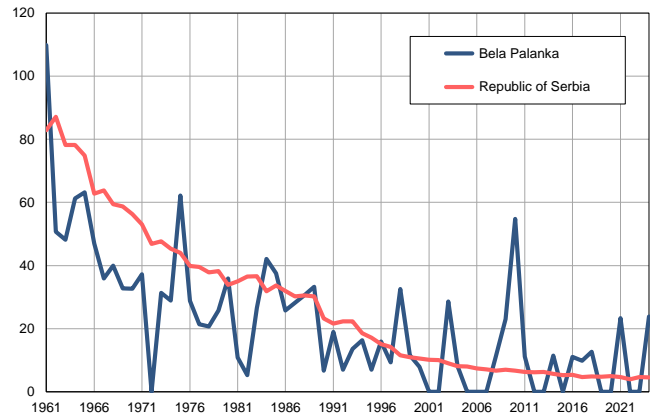
Number



Source: Vital Statistics, SORS

Infants deaths per 1,000 livebirths, 1961–2024

Number



Source: Vital Statistics, SORS

Table. Natural changes of population, Bela Palanka

Year	Population size*	Livebirths	Deaths	Natural increase	Infants deaths	per 1000 population			Infant deaths per 1000 livebirths
						Livebirths	Deaths	Natural increase	
1961	24982	337	230	107	37	13.5	9.2	4.3	109.8
1962	24616	355	217	138	18	14.4	8.8	5.6	50.7
1963	24252	332	239	93	16	13.7	9.9	3.8	48.2
1964	23885	310	206	104	19	13.0	8.6	4.4	61.3
1965	23519	269	250	19	17	11.4	10.6	0.8	63.2
1966	23154	234	212	22	11	10.1	9.2	0.9	47.0
1967	22788	251	240	11	9	11.0	10.5	0.5	35.9
1968	22422	250	225	25	10	11.1	10.0	1.1	40.0
1969	22055	244	226	18	8	11.1	10.2	0.9	32.8
1970	21691	214	229	-15	7	9.9	10.6	-0.7	32.7
1971	21325	215	227	-12	8	10.1	10.6	-0.5	37.2
1972	21067	235	235	0	0	11.2	11.2	0.0	0.0
1973	20809	224	234	-10	7	10.8	11.2	-0.4	31.3
1974	20551	242	219	23	7	11.8	10.7	1.1	28.9
1975	20293	193	260	-67	12	9.5	12.8	-3.3	62.2
1976	20035	208	250	-42	6	10.4	12.5	-2.1	28.8
1977	19776	187	223	-36	4	9.5	11.3	-1.8	21.4
1978	19518	193	252	-59	4	9.9	12.9	-3.0	20.7
1979	19260	194	260	-66	5	10.1	13.5	-3.4	25.8
1980	19002	195	288	-93	7	10.3	15.2	-4.9	35.9
1981	18744	183	292	-109	2	9.8	15.6	-5.8	10.9
1982	18514	187	277	-90	1	10.1	15.0	-4.9	5.3
1983	18285	188	269	-81	5	10.3	14.7	-4.4	26.6
1984	18055	214	297	-83	9	11.9	16.4	-4.5	42.1
1985	17825	160	266	-106	6	9.0	14.9	-5.9	37.5
1986	17596	194	286	-92	5	11.0	16.3	-5.3	25.8
1987	17366	177	308	-131	5	10.2	17.7	-7.5	28.2
1988	17136	196	291	-95	6	11.4	17.0	-5.6	30.6
1989	16906	180	291	-111	6	10.6	17.2	-6.6	33.3
1990	16677	150	300	-150	1	9.0	18.0	-9.0	6.7
1991	16447	158	299	-141	3	9.6	18.2	-8.6	19.0
1992	16268	142	305	-163	1	8.7	18.7	-10.0	7.0
1993	16088	147	262	-115	2	9.1	16.3	-7.2	13.6
1994	15909	123	311	-188	2	7.7	19.5	-11.8	16.3
1995	15730	143	277	-134	1	9.1	17.6	-8.5	7.0
1996	15551	126	282	-156	2	8.1	18.1	-10.0	15.9
1997	15371	107	322	-215	1	7.0	20.9	-13.9	9.3
1998	15192	92	280	-188	3	6.1	18.4	-12.3	32.6
1999	15013	86	295	-209	1	5.7	19.6	-13.9	11.6
2000	14834	127	282	-155	1	8.6	19.0	-10.4	7.9
2001	14654	106	284	-178	0	7.2	19.4	-12.2	0.0
2002	14312	100	308	-208	0	7.0	21.5	-14.5	0.0
2003	14073	105	272	-167	3	7.5	19.3	-11.8	28.6
2004	13882	124	269	-145	1	8.9	19.4	-10.5	8.1
2005	13645	92	291	-199	0	6.7	21.3	-14.6	0.0

Table. Natural changes of population, Bela Palanka

Year	Population size*	Livebirths	Deaths	Natural increase	Infants deaths	per 1000 population			Infant deaths per 1000 livebirths
						Livebirths	Deaths	Natural increase	
2006	13369	75	218	-143	0	5.6	16.3	-10.7	0.0
2007	13101	72	274	-202	0	5.5	20.9	-15.4	0.0
2008	12845	88	273	-185	1	6.9	21.3	-14.4	11.4
2009	12593	87	279	-192	2	6.9	22.2	-15.3	23.0
2010	12358	73	247	-174	4	5.9	20.0	-14.1	54.8
2011	12132	89	291	-202	1	7.3	24.0	-16.7	11.2
2012	11909	77	264	-187	0	6.5	22.2	-15.7	0.0
2013	11725	90	222	-132	0	7.7	18.9	-11.3	0.0
2014	11559	87	232	-145	1	7.5	20.1	-12.5	11.5
2015	11377	84	236	-152	0	7.4	20.7	-13.3	0.0
2016	11214	90	211	-121	1	8.0	18.8	-10.8	11.1
2017	11065	102	206	-104	1	9.2	18.6	-9.4	9.8
2018	10889	79	216	-137	1	7.3	19.8	-12.6	12.7
2019	10702	88	223	-135	0	8.2	20.8	-12.6	0.0
2020	10523	67	248	-181	0	6.4	23.6	-17.2	0.0
2021	10325	86	274	-188	2	8.3	26.5	-18.2	23.3
2022	9993	70	209	-139	0	7.0	20.9	-13.9	0.0
2023	9854	80	203	-123	0	8.1	20.6	-12.5	0.0
2024	9703	84	184	-100	2	8.7	19.0	-10.3	23.8

Source: Vital Statistics, * Population estimates, SORS

Definitions

Population size

Number of population in the respective year. The data on the number of population in 1961, 1971, 1981 and 1991 are census data, while for the inter-census years the number of population was calculated as an average inter-census difference. From 2002 are given the population estimates that were calculated according to the census of population results and the annual statistics of natural mechanical population movements.

Livebirths

Absolute number of live births in the course of a year. Live born child means a child giving vital signs after birth (breathing, i.e. heartbeat), even for the shortest time, regardless the mother's pregnancy duration.

Deaths

Absolute number of deaths in the course of a year. Deceased is a person that whenever after having been born live, shows permanently stopped vital signs.

Natural increase

Natural population increase is the number of live births minus the number of deaths.

Infants deaths

Absolute number of infants deaths in the course of a year. Deceased infant is a child that after having been born live and before aged one year, shows permanently stopped vital signs.

Livebirths, per 1 000 population

Livebirths rate is the ratio of the number of live births and the population size in the respective year. The number of live births is divided by the population size and then multiplied by 1000.

Deaths, per 1 000 population

General mortality rate represents the ratio between the number of deaths and the population size in the respective year. The number of deaths is divided by population size and then multiplied by 1000.

Natural increase, per 1 000 population

Natural population increase rate is the difference between the number of live births and the number of deaths, in relation to the population size in the respective year.

Natural population increase rate = (number of live births - number of deaths) / population size * 1000

Infants deaths, per 1 000 livebirths

Infant mortality rate is the ratio of deceased children under 1 year of age and live births in the respective year. The mortality rate is expressed per 1000 live births.

Infant mortality rate = (number of deceased children under 1 year of age / number of live births) * 1000

Additional info:



Download all database data in Excel format:

[Data](#)



DevInfo profiles:

devinfo.stat.gov.rs/SerbiaProfileLauncher/?lang=en



DevInfo online database:

devinfo.stat.gov.rs/vitalna



For additional information or questions please contact:

devinfo@stat.gov.rs