

# Natural changes of population 1961 – 2024

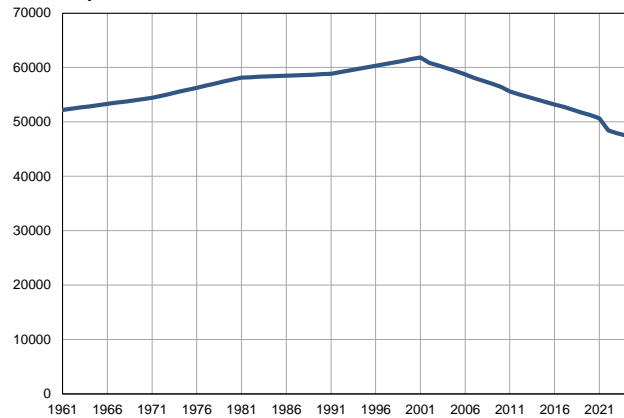
Profile  
July 2025

## Bačka Palanka

	1961	2024
Population size*	52199	47479
Livebirths, Number	834	403
Deaths, Number	414	765
Natural increase, Number	420	-362
Infants deaths, Number	54	2
Livebirths, per 1,000 population	16	9
Deaths, per 1,000 population	8	16
Natural increase, per 1,000 population	8	-8
Infants deaths, per 1,000 livebirths	65	5

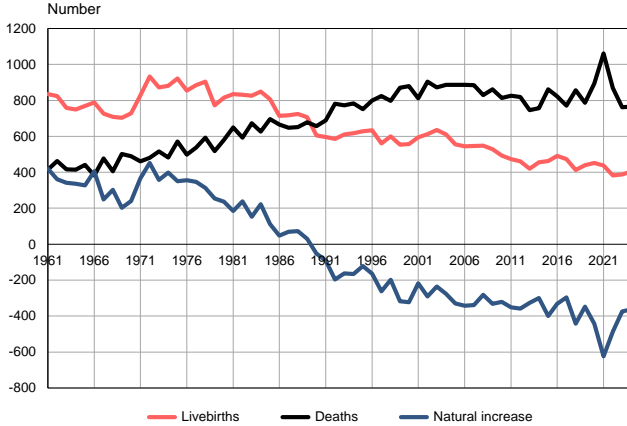
Source: Vital Statistics, \* Population estimates, SORS

Population size, 1961–2024



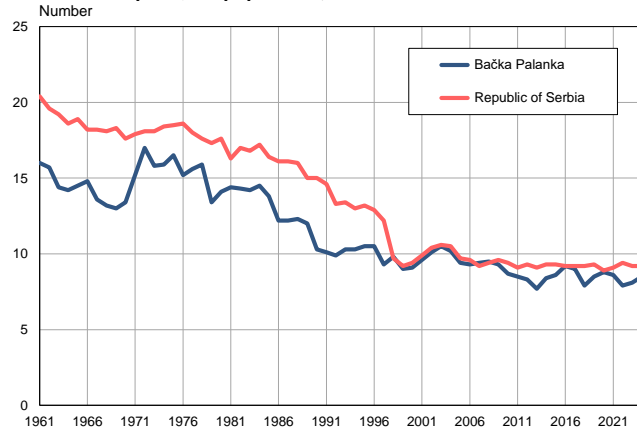
Source: Population estimates, SORS

Livebirths, deaths and natural increase, 1961–2024



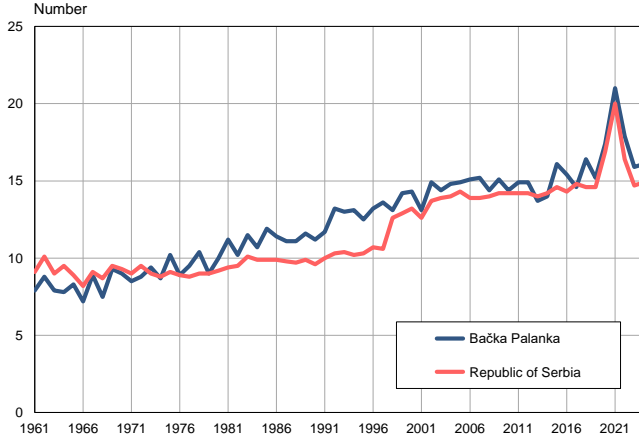
Source: Vital Statistics, SORS

Livebirths per 1,000 population, 1961–2024



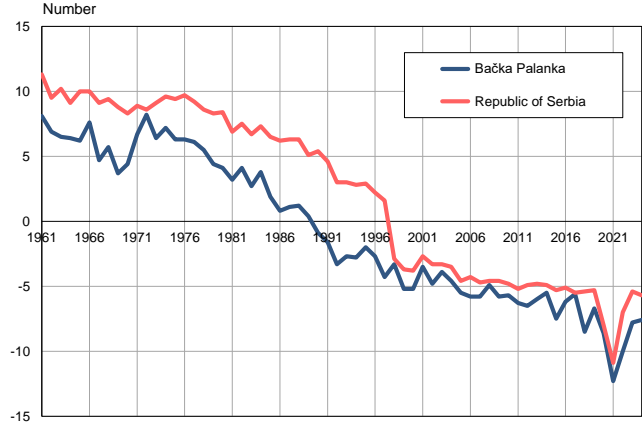
Source: Vital Statistics, SORS

Deaths per 1,000 population, 1961–2024



Source: Vital Statistics, SORS

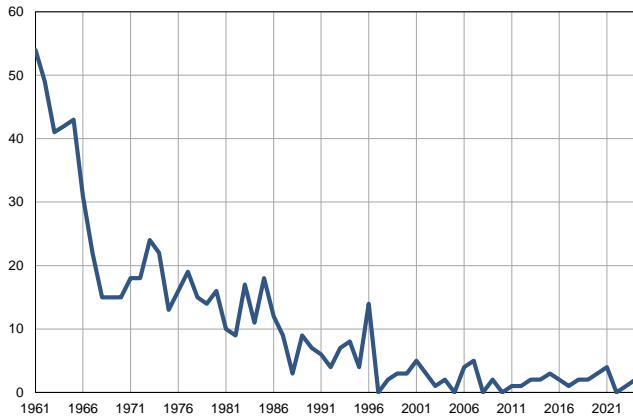
Natural increase per 1,000 population, 1961–2024



Source: Vital Statistics, SORS

**Infants deaths, 1961–2024**

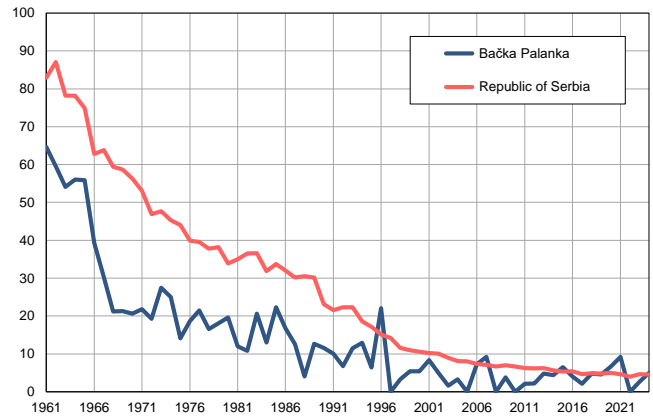
Number



Source: Vital Statistics, SORS

**Infants deaths per 1,000 livebirths, 1961–2024**

Number



Source: Vital Statistics, SORS

**Table. Natural changes of population, Bačka Palanka**

Year	Population size*	Livebirths	Deaths	Natural increase	Infants deaths	per 1000 population			Infant deaths per 1000 livebirths
						Livebirths	Deaths	Natural increase	
1961	52199	834	414	420	54	16.0	7.9	8.1	64.7
1962	52420	824	463	361	49	15.7	8.8	6.9	59.5
1963	52641	758	417	341	41	14.4	7.9	6.5	54.1
1964	52862	750	414	336	42	14.2	7.8	6.4	56.0
1965	53083	769	441	328	43	14.5	8.3	6.2	55.9
1966	53305	788	383	405	31	14.8	7.2	7.6	39.3
1967	53526	726	477	249	22	13.6	8.9	4.7	30.3
1968	53747	708	405	303	15	13.2	7.5	5.7	21.2
1969	53967	703	501	202	15	13.0	9.3	3.7	21.3
1970	54189	728	489	239	15	13.4	9.0	4.4	20.6
1971	54410	827	461	366	18	15.2	8.5	6.7	21.8
1972	54785	932	481	451	18	17.0	8.8	8.2	19.3
1973	55159	873	516	357	24	15.8	9.4	6.4	27.5
1974	55534	881	482	399	22	15.9	8.7	7.2	25.0
1975	55908	922	571	351	13	16.5	10.2	6.3	14.1
1976	56282	855	499	356	16	15.2	8.9	6.3	18.7
1977	56657	884	538	346	19	15.6	9.5	6.1	21.5
1978	57032	905	592	313	15	15.9	10.4	5.5	16.6
1979	57406	772	518	254	14	13.4	9.0	4.4	18.1
1980	57781	816	580	236	16	14.1	10.0	4.1	19.6
1981	58155	835	650	185	10	14.4	11.2	3.2	12.0
1982	58223	831	593	238	9	14.3	10.2	4.1	10.8
1983	58291	826	673	153	17	14.2	11.5	2.7	20.6
1984	58358	849	627	222	11	14.5	10.7	3.8	13.0
1985	58426	806	695	111	18	13.8	11.9	1.9	22.3
1986	58495	713	666	47	12	12.2	11.4	0.8	16.8
1987	58563	717	648	69	9	12.2	11.1	1.1	12.6
1988	58631	724	651	73	3	12.3	11.1	1.2	4.1
1989	58699	707	678	29	9	12.0	11.6	0.4	12.7
1990	58767	605	657	-52	7	10.3	11.2	-0.9	11.6
1991	58835	596	688	-92	6	10.1	11.7	-1.6	10.1
1992	59134	585	781	-196	4	9.9	13.2	-3.3	6.8
1993	59433	611	773	-162	7	10.3	13.0	-2.7	11.5
1994	59733	618	784	-166	8	10.3	13.1	-2.8	12.9
1995	60032	629	751	-122	4	10.5	12.5	-2.0	6.4
1996	60331	634	799	-165	14	10.5	13.2	-2.7	22.1
1997	60630	561	824	-263	0	9.3	13.6	-4.3	0.0
1998	60929	599	798	-199	2	9.8	13.1	-3.3	3.3
1999	61228	554	871	-317	3	9.0	14.2	-5.2	5.4
2000	61528	557	880	-323	3	9.1	14.3	-5.2	5.4
2001	61827	594	811	-217	5	9.6	13.1	-3.5	8.4
2002	60821	613	904	-291	3	10.1	14.9	-4.8	4.9
2003	60358	636	872	-236	1	10.5	14.4	-3.9	1.6
2004	59851	610	886	-276	2	10.2	14.8	-4.6	3.3
2005	59314	556	886	-330	0	9.4	14.9	-5.5	0.0

**Table. Natural changes of population, Bačka Palanka**

Year	Population size*	Livebirths	Deaths	Natural increase	Infants deaths	per 1000 population			Infant deaths per 1000 livebirths
						Livebirths	Deaths	Natural increase	
2006	58738	545	887	-342	4	9.3	15.1	-5.8	7.3
2007	58110	546	885	-339	5	9.4	15.2	-5.8	9.2
2008	57538	548	830	-282	0	9.5	14.4	-4.9	0.0
2009	57000	529	861	-332	2	9.3	15.1	-5.8	3.8
2010	56438	493	814	-321	0	8.7	14.4	-5.7	0.0
2011	55610	474	826	-352	1	8.5	14.9	-6.3	2.1
2012	55106	460	819	-359	1	8.3	14.9	-6.5	2.2
2013	54631	420	746	-326	2	7.7	13.7	-6.0	4.8
2014	54161	456	756	-300	2	8.4	14.0	-5.5	4.4
2015	53678	463	862	-399	3	8.6	16.1	-7.5	6.5
2016	53218	491	822	-331	2	9.2	15.4	-6.2	4.1
2017	52792	474	771	-297	1	9.0	14.6	-5.6	2.1
2018	52263	413	856	-443	2	7.9	16.4	-8.5	4.8
2019	51735	439	786	-347	2	8.5	15.2	-6.7	4.6
2020	51264	451	894	-443	3	8.8	17.4	-8.6	6.7
2021	50642	437	1061	-624	4	8.6	21.0	-12.3	9.2
2022	48454	382	868	-486	0	7.9	17.9	-10.0	0.0
2023	47896	388	762	-374	1	8.1	15.9	-7.8	2.6
2024	47479	403	765	-362	2	8.5	16.1	-7.6	5.0

Source: Vital Statistics, \* Population estimates, SORS

## Definitions

### Population size

Number of population in the respective year. The data on the number of population in 1961, 1971, 1981 and 1991 are census data, while for the inter-census years the number of population was calculated as an average inter-census difference. From 2002 are given the population estimates that were calculated according to the census of population results and the annual statistics of natural mechanical population movements.

### Livebirths

Absolute number of live births in the course of a year. Live born child means a child giving vital signs after birth (breathing, i.e. heartbeat), even for the shortest time, regardless the mother's pregnancy duration.

### Deaths

Absolute number of deaths in the course of a year. Deceased is a person that whenever after having been born live, shows permanently stopped vital signs.

### Natural increase

Natural population increase is the number of live births minus the number of deaths.

### Infants deaths

Absolute number of infants deaths in the course of a year. Deceased infant is a child that after having been born live and before aged one year, shows permanently stopped vital signs.

### Livebirths, per 1 000 population

Livebirths rate is the ratio of the number of live births and the population size in the respective year. The number of live births is divided by the population size and then multiplied by 1000.

### Deaths, per 1 000 population

General mortality rate represents the ratio between the number of deaths and the population size in the respective year. The number of deaths is divided by population size and then multiplied by 1000.

### Natural increase, per 1 000 population

Natural population increase rate is the difference between the number of live births and the number of deaths, in relation to the population size in the respective year.

Natural population increase rate = (number of live births - number of deaths) / population size \* 1000

### Infants deaths, per 1 000 livebirths

Infant mortality rate is the ratio of deceased children under 1 year of age and live births in the respective year. The mortality rate is expressed per 1000 live births.

Infant mortality rate = (number of deceased children under 1 year of age / number of live births) \* 1000

## Additional info:



Download all database data in Excel format:

[Data](#)



DevInfo profiles:

[devinfo.stat.gov.rs/SerbiaProfileLauncher/?lang=en](http://devinfo.stat.gov.rs/SerbiaProfileLauncher/?lang=en)



DevInfo online database:

[devinfo.stat.gov.rs/vitalna](http://devinfo.stat.gov.rs/vitalna)



For additional information or questions please contact:

[devinfo@stat.gov.rs](mailto:devinfo@stat.gov.rs)