

Natural changes of population 1961 – 2024

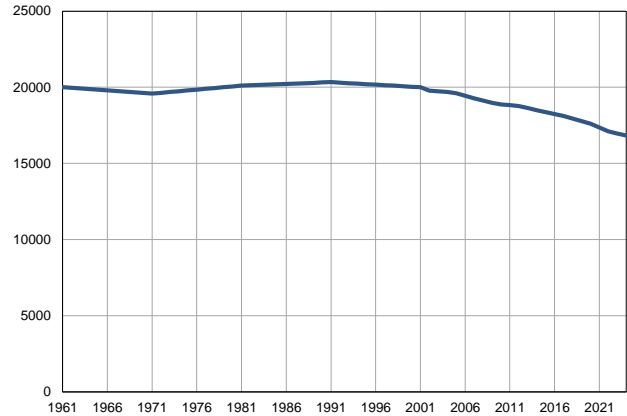
Profile
July 2025

Arilje

	1961	2024
Population size*	20001	16823
Livebirths, Number	330	154
Deaths, Number	185	242
Natural increase, Number	145	-88
Infants deaths, Number	16	0
Livebirths, per 1,000 population	17	9
Deaths, per 1,000 population	9	14
Natural increase, per 1,000 population	7	-5
Infants deaths, per 1,000 livebirths	49	0

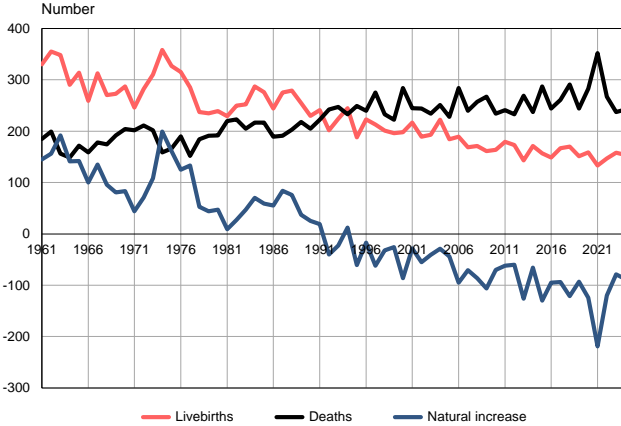
Source: Vital Statistics, * Population estimates, SORS

Population size, 1961–2024



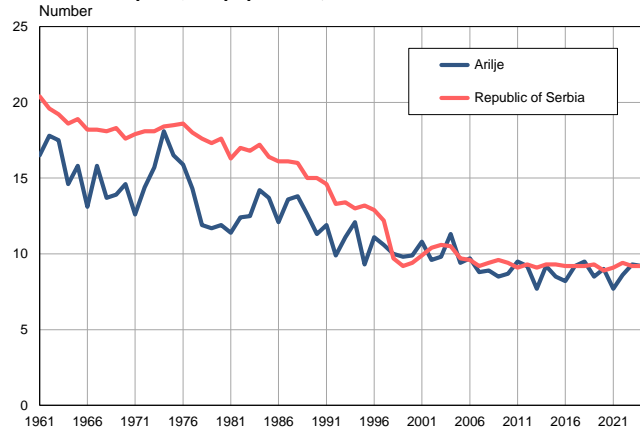
Source: Population estimates, SORS

Livebirths, deaths and natural increase, 1961–2024



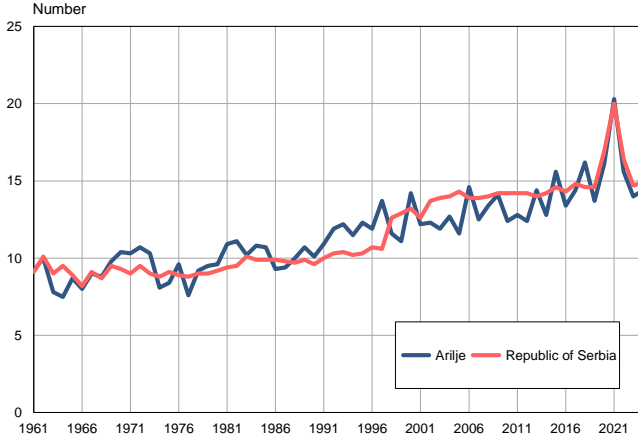
Source: Vital Statistics, SORS

Livebirths per 1,000 population, 1961–2024



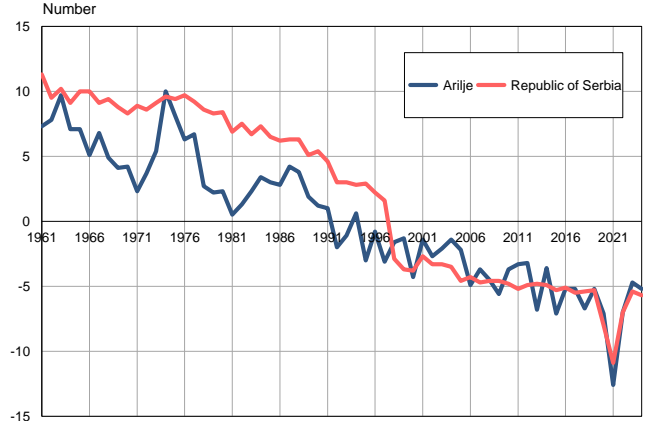
Source: Vital Statistics, SORS

Deaths per 1,000 population, 1961–2024



Source: Vital Statistics, SORS

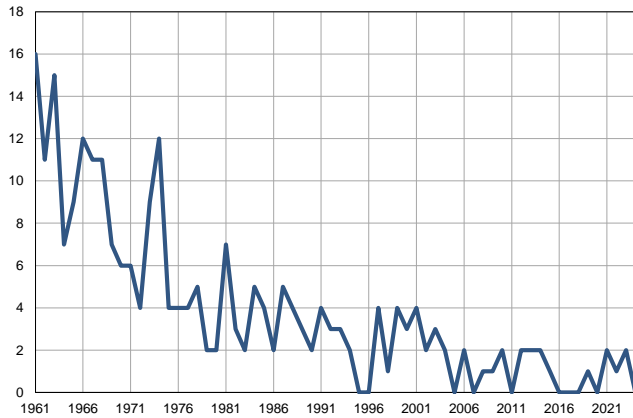
Natural increase per 1,000 population, 1961–2024



Source: Vital Statistics, SORS

Infants deaths, 1961–2024

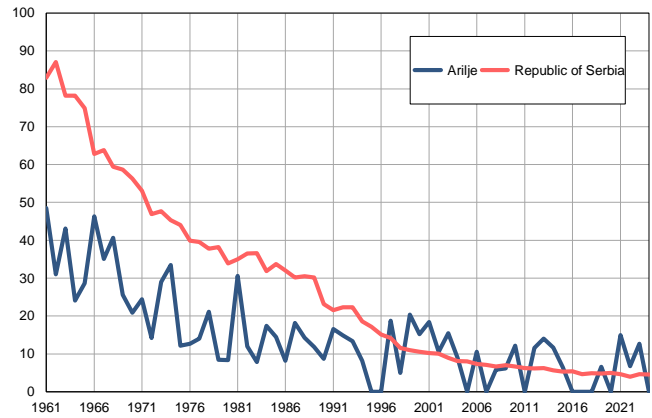
Number



Source: Vital Statistics, SORS

Infants deaths per 1,000 livebirths, 1961–2024

Number



Source: Vital Statistics, SORS

Table. Natural changes of population, Arilje

Year	Population size*	Livebirths	Deaths	Natural increase	Infants deaths	per 1000 population			Infant deaths per 1000 livebirths
						Livebirths	Deaths	Natural increase	
1961	20001	330	185	145	16	16.5	9.2	7.3	48.5
1962	19959	355	199	156	11	17.8	10.0	7.8	31.0
1963	19917	348	156	192	15	17.5	7.8	9.7	43.1
1964	19875	290	149	141	7	14.6	7.5	7.1	24.1
1965	19833	314	172	142	9	15.8	8.7	7.1	28.7
1966	19791	259	159	100	12	13.1	8.0	5.1	46.3
1967	19749	313	178	135	11	15.8	9.0	6.8	35.1
1968	19707	270	174	96	11	13.7	8.8	4.9	40.7
1969	19665	273	192	81	7	13.9	9.8	4.1	25.6
1970	19623	287	204	83	6	14.6	10.4	4.2	20.9
1971	19581	246	202	44	6	12.6	10.3	2.3	24.4
1972	19634	282	211	71	4	14.4	10.7	3.7	14.2
1973	19687	310	202	108	9	15.7	10.3	5.4	29.0
1974	19740	358	159	199	12	18.1	8.1	10.0	33.5
1975	19793	327	166	161	4	16.5	8.4	8.1	12.2
1976	19846	315	190	125	4	15.9	9.6	6.3	12.7
1977	19899	285	152	133	4	14.3	7.6	6.7	14.0
1978	19952	237	184	53	5	11.9	9.2	2.7	21.1
1979	20005	235	191	44	2	11.7	9.5	2.2	8.5
1980	20058	239	192	47	2	11.9	9.6	2.3	8.4
1981	20111	229	220	9	7	11.4	10.9	0.5	30.6
1982	20133	250	223	27	3	12.4	11.1	1.3	12.0
1983	20156	252	205	47	2	12.5	10.2	2.3	7.9
1984	20178	287	217	70	5	14.2	10.8	3.4	17.4
1985	20201	276	217	59	4	13.7	10.7	3.0	14.5
1986	20223	244	189	55	2	12.1	9.3	2.8	8.2
1987	20245	275	191	84	5	13.6	9.4	4.2	18.2
1988	20268	279	203	76	4	13.8	10.0	3.8	14.3
1989	20290	255	218	37	3	12.6	10.7	1.9	11.8
1990	20313	230	205	25	2	11.3	10.1	1.2	8.7
1991	20335	241	222	19	4	11.9	10.9	1.0	16.6
1992	20302	202	242	-40	3	9.9	11.9	-2.0	14.9
1993	20269	224	247	-23	3	11.1	12.2	-1.1	13.4
1994	20236	245	233	12	2	12.1	11.5	0.6	8.2
1995	20203	188	249	-61	0	9.3	12.3	-3.0	0.0
1996	20170	223	240	-17	0	11.1	11.9	-0.8	0.0
1997	20137	213	275	-62	4	10.6	13.7	-3.1	18.8
1998	20104	201	233	-32	1	10.0	11.6	-1.6	5.0
1999	20071	196	222	-26	4	9.8	11.1	-1.3	20.4
2000	20038	198	284	-86	3	9.9	14.2	-4.3	15.2
2001	20005	217	245	-28	4	10.8	12.2	-1.4	18.4
2002	19772	189	244	-55	2	9.6	12.3	-2.7	10.6
2003	19727	193	234	-41	3	9.8	11.9	-2.1	15.5
2004	19690	222	251	-29	2	11.3	12.7	-1.4	9.0
2005	19602	184	228	-44	0	9.4	11.6	-2.2	0.0

Table. Natural changes of population, Arilje

Year	Population size*	Livebirths	Deaths	Natural increase	Infants deaths	per 1000 population			Infant deaths per 1000 livebirths
						Livebirths	Deaths	Natural increase	
2006	19443	189	284	-95	2	9.7	14.6	-4.9	10.6
2007	19272	169	240	-71	0	8.8	12.5	-3.7	0.0
2008	19119	171	257	-86	1	8.9	13.4	-4.5	5.8
2009	18987	161	267	-106	1	8.5	14.1	-5.6	6.2
2010	18875	164	234	-70	2	8.7	12.4	-3.7	12.2
2011	18826	179	241	-62	0	9.5	12.8	-3.3	0.0
2012	18765	173	233	-60	2	9.2	12.4	-3.2	11.6
2013	18642	143	269	-126	2	7.7	14.4	-6.8	14.0
2014	18495	171	237	-66	2	9.2	12.8	-3.6	11.7
2015	18369	157	287	-130	1	8.5	15.6	-7.1	6.4
2016	18240	149	244	-95	0	8.2	13.4	-5.2	0.0
2017	18109	167	261	-94	0	9.2	14.4	-5.2	0.0
2018	17947	170	291	-121	0	9.5	16.2	-6.7	0.0
2019	17779	151	244	-93	1	8.5	13.7	-5.2	6.6
2020	17609	159	283	-124	0	9.0	16.1	-7.1	0.0
2021	17368	133	352	-219	2	7.7	20.3	-12.6	15.0
2022	17111	147	267	-120	1	8.6	15.6	-7.0	6.8
2023	16954	158	237	-79	2	9.3	14.0	-4.7	12.7
2024	16823	154	242	-88	0	9.2	14.4	-5.2	0.0

Source: Vital Statistics, * Population estimates, SORS

Definitions

Population size

Number of population in the respective year. The data on the number of population in 1961, 1971, 1981 and 1991 are census data, while for the inter-census years the number of population was calculated as an average inter-census difference. From 2002 are given the population estimates that were calculated according to the census of population results and the annual statistics of natural mechanical population movements.

Livebirths

Absolute number of live births in the course of a year. Live born child means a child giving vital signs after birth (breathing, i.e. heartbeat), even for the shortest time, regardless the mother's pregnancy duration.

Deaths

Absolute number of deaths in the course of a year. Deceased is a person that whenever after having been born live, shows permanently stopped vital signs.

Natural increase

Natural population increase is the number of live births minus the number of deaths.

Infants deaths

Absolute number of infants deaths in the course of a year. Deceased infant is a child that after having been born live and before aged one year, shows permanently stopped vital signs.

Livebirths, per 1 000 population

Livebirths rate is the ratio of the number of live births and the population size in the respective year. The number of live births is divided by the population size and then multiplied by 1000.

Deaths, per 1 000 population

General mortality rate represents the ratio between the number of deaths and the population size in the respective year. The number of deaths is divided by population size and then multiplied by 1000.

Natural increase, per 1 000 population

Natural population increase rate is the difference between the number of live births and the number of deaths, in relation to the population size in the respective year.

Natural population increase rate = (number of live births - number of deaths) / population size * 1000

Infants deaths, per 1 000 livebirths

Infant mortality rate is the ratio of deceased children under 1 year of age and live births in the respective year. The mortality rate is expressed per 1000 live births.

Infant mortality rate = (number of deceased children under 1 year of age / number of live births) * 1000

Additional info:



Download all database data in Excel format:

[Data](#)



DevInfo profiles:

devinfo.stat.gov.rs/SerbiaProfileLauncher/?lang=en



DevInfo online database:

devinfo.stat.gov.rs/vitalna



For additional information or questions please contact:

devinfo@stat.gov.rs