

Natural changes of population 1961 – 2024

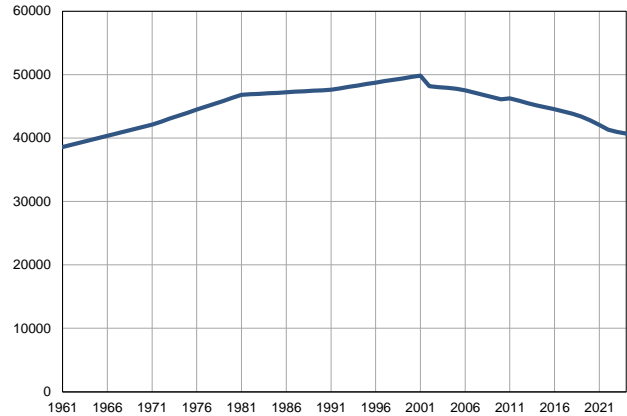
Profile
July 2025

Arandelovac

	1961	2024
Population size*	38562	40717
Livebirths, Number	618	361
Deaths, Number	296	514
Natural increase, Number	322	-153
Infants deaths, Number	39	1
Livebirths, per 1,000 population	16	9
Deaths, per 1,000 population	8	13
Natural increase, per 1,000 population	8	-4
Infants deaths, per 1,000 livebirths	63	3

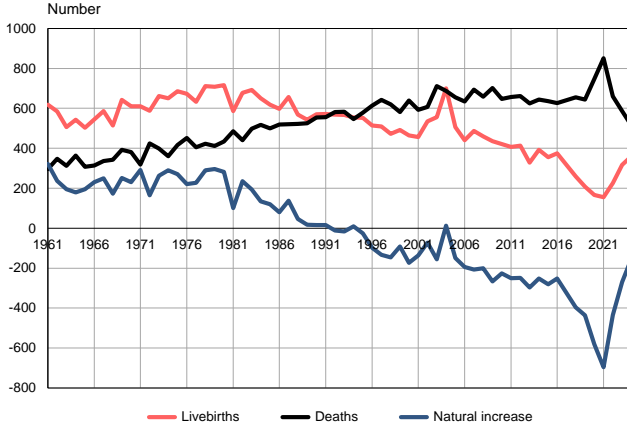
Source: Vital Statistics, * Population estimates, SORS

Population size, 1961–2024



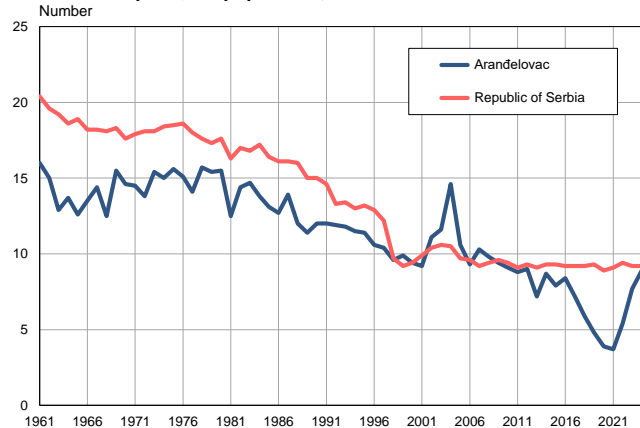
Source: Population estimates, SORS

Livebirths, deaths and natural increase, 1961–2024



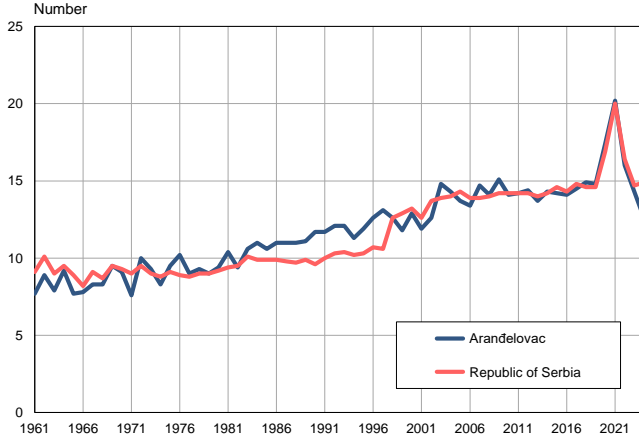
Source: Vital Statistics, SORS

Livebirths per 1,000 population, 1961–2024



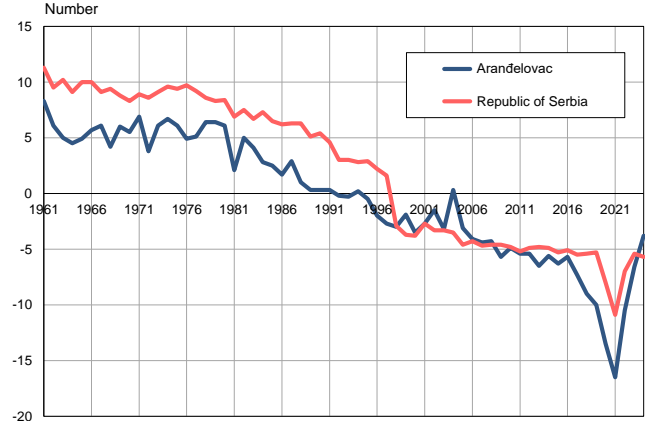
Source: Vital Statistics, SORS

Deaths per 1,000 population, 1961–2024



Source: Vital Statistics, SORS

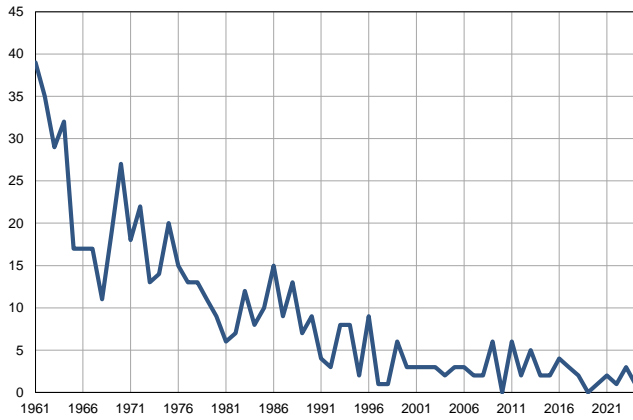
Natural increase per 1,000 population, 1961–2024



Source: Vital Statistics, SORS

Infants deaths, 1961–2024

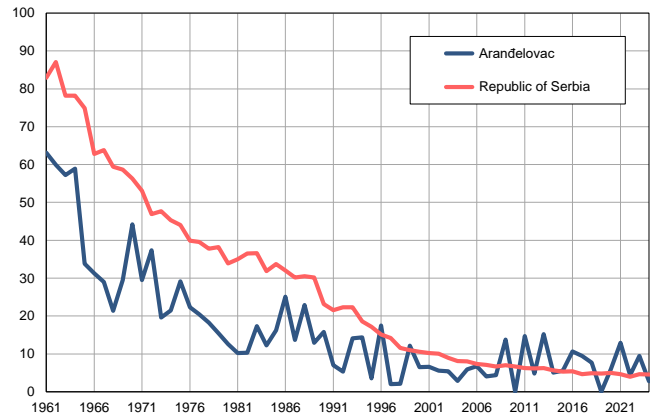
Number



Source: Vital Statistics, SORS

Infants deaths per 1,000 livebirths, 1961–2024

Number



Source: Vital Statistics, SORS

Table. Natural changes of population, Arandjelovac

Year	Population size*	Livebirths	Deaths	Natural increase	Infants deaths	per 1000 population			Infant deaths per 1000 livebirths
						Livebirths	Deaths	Natural increase	
1961	38562	618	296	322	39	16.0	7.7	8.3	63.1
1962	38918	584	347	237	35	15.0	8.9	6.1	59.9
1963	39274	507	312	195	29	12.9	7.9	5.0	57.2
1964	39630	543	364	179	32	13.7	9.2	4.5	58.9
1965	39986	503	308	195	17	12.6	7.7	4.9	33.8
1966	40342	544	314	230	17	13.5	7.8	5.7	31.3
1967	40698	587	337	250	17	14.4	8.3	6.1	29.0
1968	41054	515	342	173	11	12.5	8.3	4.2	21.4
1969	41410	643	392	251	19	15.5	9.5	6.0	29.5
1970	41766	611	381	230	27	14.6	9.1	5.5	44.2
1971	42122	610	319	291	18	14.5	7.6	6.9	29.5
1972	42590	588	424	164	22	13.8	10.0	3.8	37.4
1973	43058	662	399	263	13	15.4	9.3	6.1	19.6
1974	43526	651	361	290	14	15.0	8.3	6.7	21.5
1975	43994	686	416	270	20	15.6	9.5	6.1	29.2
1976	44462	673	452	221	15	15.1	10.2	4.9	22.3
1977	44931	633	405	228	13	14.1	9.0	5.1	20.5
1978	45399	712	423	289	13	15.7	9.3	6.4	18.3
1979	45867	708	411	297	11	15.4	9.0	6.4	15.5
1980	46335	716	434	282	9	15.5	9.4	6.1	12.6
1981	46803	586	485	101	6	12.5	10.4	2.1	10.2
1982	46885	677	441	236	7	14.4	9.4	5.0	10.3
1983	46966	692	498	194	12	14.7	10.6	4.1	17.3
1984	47048	651	517	134	8	13.8	11.0	2.8	12.3
1985	47129	619	499	120	10	13.1	10.6	2.5	16.2
1986	47210	598	519	79	15	12.7	11.0	1.7	25.1
1987	47292	657	520	137	9	13.9	11.0	2.9	13.7
1988	47374	568	522	46	13	12.0	11.0	1.0	22.9
1989	47455	543	525	18	7	11.4	11.1	0.3	12.9
1990	47537	571	555	16	9	12.0	11.7	0.3	15.8
1991	47618	572	556	16	4	12.0	11.7	0.3	7.0
1992	47841	569	581	-12	3	11.9	12.1	-0.2	5.3
1993	48065	567	583	-16	8	11.8	12.1	-0.3	14.1
1994	48288	555	546	9	8	11.5	11.3	0.2	14.4
1995	48511	552	578	-26	2	11.4	11.9	-0.5	3.6
1996	48735	515	613	-98	9	10.6	12.6	-2.0	17.5
1997	48958	509	643	-134	1	10.4	13.1	-2.7	2.0
1998	49182	473	620	-147	1	9.6	12.6	-3.0	2.1
1999	49405	491	582	-91	6	9.9	11.8	-1.9	12.2
2000	49628	465	639	-174	3	9.4	12.9	-3.5	6.5
2001	49852	457	593	-136	3	9.2	11.9	-2.7	6.6
2002	48153	535	607	-72	3	11.1	12.6	-1.5	5.6
2003	48019	556	712	-156	3	11.6	14.8	-3.2	5.4
2004	47909	700	687	13	2	14.6	14.3	0.3	2.9
2005	47790	507	656	-149	3	10.6	13.7	-3.1	5.9

Table. Natural changes of population, Arandjelovac

Year	Population size*	Livebirths	Deaths	Natural increase	Infants deaths	per 1000 population			Infant deaths per 1000 livebirths
						Livebirths	Deaths	Natural increase	
2006	47522	441	635	-194	3	9.3	13.4	-4.1	6.8
2007	47146	487	694	-207	2	10.3	14.7	-4.4	4.1
2008	46796	459	659	-200	2	9.8	14.1	-4.3	4.4
2009	46473	436	702	-266	6	9.4	15.1	-5.7	13.8
2010	46110	421	648	-227	0	9.1	14.1	-4.9	0.0
2011	46271	407	657	-250	6	8.8	14.2	-5.4	14.7
2012	45904	413	662	-249	2	9.0	14.4	-5.4	4.8
2013	45493	328	625	-297	5	7.2	13.7	-6.5	15.2
2014	45125	392	644	-252	2	8.7	14.3	-5.6	5.1
2015	44823	355	636	-281	2	7.9	14.2	-6.3	5.6
2016	44516	375	627	-252	4	8.4	14.1	-5.7	10.7
2017	44197	317	641	-324	3	7.2	14.5	-7.3	9.5
2018	43834	259	655	-396	2	5.9	14.9	-9.0	7.7
2019	43370	208	644	-436	0	4.8	14.8	-10.0	0.0
2020	42766	166	746	-580	1	3.9	17.4	-13.5	6.0
2021	42078	155	851	-696	2	3.7	20.2	-16.5	12.9
2022	41301	225	660	-435	1	5.4	16.0	-10.5	4.4
2023	40930	317	587	-270	3	7.7	14.3	-6.6	9.5
2024	40717	361	514	-153	1	8.9	12.6	-3.8	2.8

Source: Vital Statistics, * Population estimates, SORS

Definitions

Population size

Number of population in the respective year. The data on the number of population in 1961, 1971, 1981 and 1991 are census data, while for the inter-census years the number of population was calculated as an average inter-census difference. From 2002 are given the population estimates that were calculated according to the census of population results and the annual statistics of natural mechanical population movements.

Livebirths

Absolute number of live births in the course of a year. Live born child means a child giving vital signs after birth (breathing, i.e. heartbeat), even for the shortest time, regardless the mother's pregnancy duration.

Deaths

Absolute number of deaths in the course of a year. Deceased is a person that whenever after having been born live, shows permanently stopped vital signs.

Natural increase

Natural population increase is the number of live births minus the number of deaths.

Infants deaths

Absolute number of infants deaths in the course of a year. Deceased infant is a child that after having been born live and before aged one year, shows permanently stopped vital signs.

Livebirths, per 1 000 population

Livebirths rate is the ratio of the number of live births and the population size in the respective year. The number of live births is divided by the population size and then multiplied by 1000.

Deaths, per 1 000 population

General mortality rate represents the ratio between the number of deaths and the population size in the respective year. The number of deaths is divided by population size and then multiplied by 1000.

Natural increase, per 1 000 population

Natural population increase rate is the difference between the number of live births and the number of deaths, in relation to the population size in the respective year.

Natural population increase rate = (number of live births - number of deaths) / population size * 1000

Infants deaths, per 1 000 livebirths

Infant mortality rate is the ratio of deceased children under 1 year of age and live births in the respective year. The mortality rate is expressed per 1000 live births.

Infant mortality rate = (number of deceased children under 1 year of age / number of live births) * 1000

Additional info:



Download all database data in Excel format:

[Data](#)



DevInfo profiles:

devinfo.stat.gov.rs/SerbiaProfileLauncher/?lang=en



DevInfo online database:

devinfo.stat.gov.rs/vitalna



For additional information or questions please contact:

devinfo@stat.gov.rs