



Issue No. 2, Vol. 1

DevInfo Bulletin
DevInfo Serbia database



Belgrade, December 2005



DevInfo Database – Update

The most recent update of DevInfo database contains data for 230 indicators, organized into 10 sectors. Indicators data could be retrieved through sectors or strategic frames: Millennium Development Goals, Serbian Plan of Action for Children and Poverty Reduction Strategy.

Presently, there are data on 27 indicators defined in Millennium Development Goals, 54 in Serbian Plan of Action for Children and 65 indicators that relate to the poverty reduction. In the future, the focus will be on collecting missing data for all three strategies.

Database Contents (Indicators with Data) by Sectors and Goals

Sectors

- Demography (58 indicators)
- Economy (37 indicators)
- Information and Communication (3 indicators)
- Nutrition (11 indicators)
- Education (32 indicators)
- Environment (20 indicators)
- Roma in Roma settlements (82 indicators)
- Social Care (20 indicators)
- Health (45 indicators)
- Women (4 indicators)

Goals

- Millennium Development Goals** → 27
- Serbian Plan of Action for Children** → 54
- Poverty Reduction Strategy** → 65

Poverty Reduction Strategy

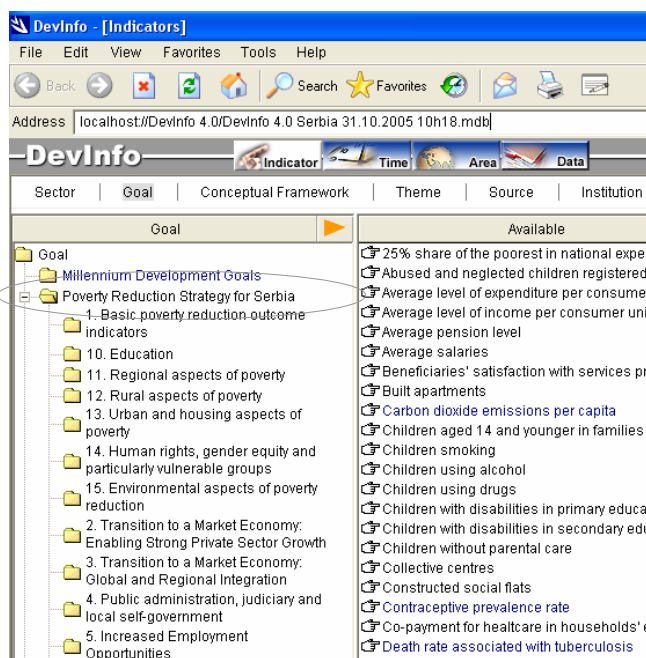
Poverty Reduction Strategy for Serbia, being one of the most important Serbian strategies, has been added into the latest DevInfo database update, that was released at the end of October.

DevInfo Installations

DevInfo software is presently installed at:

Institution

- Republic Government of Serbia (*Poverty Reduction Strategy and Millennium Development Goals monitoring teams and Council for Child Rights*)
- Republic Statistical Office
- Republic Development Bureau
- Ministry of Education and Sports
- Ministry of Finance
- Ministry of Health
- Ministry of Labour, Employment and Social Policy
- Institute of Public Health “Batut”
- Institute of Social Medicine
- Institute of Mental Health
- Institute for the Advancement of Education
- People’s Office of the President of the Republic of Serbia
- Faculty of Economics
- Serbian Investment and Export Promotion Agency
- Child Rights Centre



DevInfo is also installed at UNICEF and UNDP Belgrade offices.

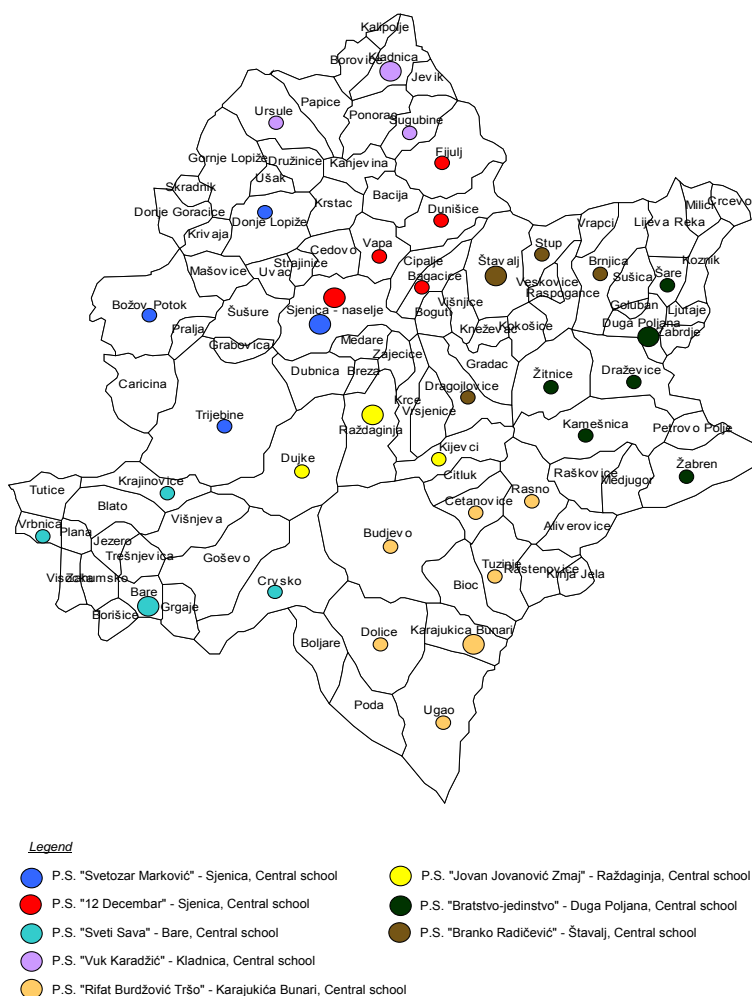
Local level development

DevInfo database currently offers data on 67 indicators for the municipal level. In order to improve support to monitoring efforts at local level, the focus in the future will be placed on data collection for the level of districts, municipalities and settlements.

In close cooperation with UNICEF and financial support of CIDA (Canadian International Development Agency), the City of Kragujevac and municipalities of Sjenica and Pirot have developed Local Plans of Actions for children, currently being in the implementation phase (period 2005-2010). As a part of monitoring process, the Local

DevInfo databases have been developed and are regularly updated. In close cooperation with the Republic Statistical Office of Serbia, the settlement level maps for all of the three municipalities have been created with basic Census 2002 demographic data added into municipal databases. The picture below shows the settlement level map with marked primary schools in Sjenica municipality, that was used in implementation of the LPA activity “Optimization of the school network”. This map is based on the DevInfo settlement level map established for Sjenica municipality during the LPA process.

Sjenica Municipality, primary school network





To get more information, please visit the LPA web sites of Kragujevac, Sjenica and Pirot. You can download all relevant documents (LPA document, Situation Analysis, Communication Strategy), databases and settlement level maps at:

LPA Kragujevac: <http://www.kragujevac.org.yu/lpa>

LPA Pirot: <http://www.pirot.org.yu/lpa>

LPA Sjenica: <http://www.sjenica-lpa.com>

New projects

With support of UNICEF, Republic Statistical Office has initiated the development of DevInfo Census database. During the project implementation, the map and census data for the level of the settlements will be created to be used in DevInfo software. The data on the most important indicators will be prepared. The DevInfo Census database is scheduled for release in May 2006. Upon release, the database and settlement level maps will be placed for free download at:

<http://webrzs.statserb.sr.gov.yu/axd/devinfo/index.htm>

New initiatives

In the period 26 October-21 December 2005, Council for Child Rights and UNICEF have organized regional seminars in 15 Serbian municipalities, during which NPA (National Plan of Action for Children), LPA (Local Plan of Action for Children) and DevInfo were presented. The participants were informed about DevInfo database system in general, its possibilities that make it suitable for monitoring purposes and also, some practical examples were presented.

Each of the municipalities participating the regional seminars (130, out of total of 165 in the Republic of Serbia) were provided with a CD with DevInfo software, databases and documentation, which will enable its installation and use at local level.

New DevInfo web addresses

New DevInfo web pages are placed on Republic Statistical Office web site, at:

- <http://webrzs.statserb.sr.gov.yu/axd/devinfo/index.htm> (Serbian language version)
- <http://webrzs.statserb.sr.gov.yu/axd/devinfo/indexe.htm> (English language version)

For further information please contact:

Dragana Djokovic-Papic

Republic Statistical Office,

Chief of the Department

Department for socioeconomic indicators and labor force surveys

Phone: +381 11 2412-922, ext. 247

E-mail: ddjokovic_papic@statserb.sr.gov.yu

Web: <http://www.statserb.sr.gov.yu>

Vladica Jankovic

UNICEF,

DevInfo Monitoring Assistant

Phone: +381 11 3602-125

E-mail: vjankovic@unicef.org

Web: <http://www.devinfo.org>

Detailed table on indicators data in DevInfo database - October 2005

Sector	Class	Indicator	NPA	MDG	PRS	Unit	Source	Years	Levels	Sub-population
Demography	Population by national or ethnic groups	Albanians				Number	RSO - Population Census	1991, 2002 1991, 2002 2002	RS, CS+V, Districts, Municipalities	Total, Male, Female, Mean age, Ageing index, 0-19, 20-39, 40-59, 60 and more, 80 and more, Unknown
Demography	Population by national or ethnic groups	Bosnians				Number	RSO - Population Census	2002 2002 2002	RS, CS+V, Districts, Municipalities	Total, Male, Female, Mean age, Ageing index, 0-19, 20-39, 40-59, 60 and more, 80 and more, Unknown
Demography	Population by national or ethnic groups	Bulgarians				Number	RSO - Population Census	2002 2002 2002	RS, CS+V, Districts, Municipalities	Total, Male, Female, Mean age, Ageing index, 0-19, 20-39, 40-59, 60 and more, 80 and more, Unknown
Demography	Population by national or ethnic groups	Montenegrins				Number	RSO - Population Census	1991, 2002 1991, 2002 2002	RS, CS+V, Districts, Municipalities	Total, Male, Female, Mean age, Ageing index, 0-19, 20-39, 40-59, 60 and more, 80 and more, Unknown
Demography	Population by national or ethnic groups	Croatians				Number	RSO - Population Census	1991, 2002 1991, 2002 2002	RS, CS+V, Districts, Municipalities	Total, Male, Female, Mean age, Ageing index, 0-19, 20-39, 40-59, 60 and more, 80 and more, Unknown
Demography	Population by national or ethnic groups	Hungarians				Number	RSO - Population Census	1991, 2002 1991, 2002 2002	RS, CS+V, Districts, Municipalities	Total, Male, Female, Mean age, Ageing index, 0-19, 20-39, 40-59, 60 and more, 80 and more, Unknown
Demography	Population by national or ethnic groups	Muslims				Number	RSO - Population Census	1991, 2002 1991, 2002 2002	RS, CS+V, Districts, Municipalities	Total, Male, Female, Mean age, Ageing index, 0-19, 20-39, 40-59, 60 and more, 80 and more, Unknown
Demography	Population by national or ethnic groups	Roma				Number	RSO - Population Census	1991, 2002 1991, 2002 2002	RS, CS+V, Districts, Municipalities	Total, Male, Female, Mean age, Ageing index, 0-19, 20-39, 40-59, 60 and more, 80 and more, Unknown
Demography	Population by national or ethnic groups	Rumanians				Number	RSO - Population Census	1991, 2002 1991, 2002 2002	RS, CS+V, Districts, Municipalities	Total, Male, Female, Mean age, Ageing index, 0-19, 20-39, 40-59, 60 and more, 80 and more, Unknown
Demography	Population by national or ethnic groups	Ruthenians				Number	RSO - Population Census	2002 2002 2002	RS, CS+V, Districts, Municipalities	Total, Male, Female, Mean age, Ageing index, 0-19, 20-39, 40-59, 60 and more, 80 and more, Unknown
Demography	Population by national or ethnic groups	Slovaks				Number	RSO - Population Census	1991, 2002 1991, 2002 2002	RS, CS+V, Districts, Municipalities	Total, Male, Female, Mean age, Ageing index, 0-19, 20-39, 40-59, 60 and more, 80 and more, Unknown
Demography	Population by national or ethnic groups	Serbs				Number	RSO - Population Census	1991, 2002 1991, 2002 2002	RS, CS+V, Districts, Municipalities	Total, Male, Female, Mean age, Ageing index, 0-19, 20-39, 40-59, 60 and more, 80 and more, Unknown
Demography	Population	Children under 6 year-old (preschool)				Number	RSO - Population Census	1991, 2002 1991, 2002 1991, 2002	RS, CS+V, Districts, Municipalities	Total Male Female
Demography	Population	Children 15-18 year-old (secondary education)				Number	RSO - Population Census	1991, 2002 1991, 2002 1991, 2002	RS, CS+V, Districts, Municipalities	Total Male Female

Sector	Class	Indicator	NPA	MDG	PRS	Unit	Source	Years	Levels	Sub-population
Demography	Population	Children 15-27 year-old (youth)				Number	RSO - Population Census	1991, 2002 1991, 2002 1991, 2002	RS, CS+V, Districts, Municipalities	Total Male Female
Demography	Population	Children 19-24 year-old (high education)				Number	RSO - Population Census	1991, 2002 1991, 2002 1991, 2002	RS, CS+V, Districts, Municipalities	Total Male Female
Demography	Population	Children 7 – 14 year-old (primary education)				Number	RSO - Population Census	1991, 2002 1991, 2002 1991, 2002	RS, CS+V, Districts, Municipalities	Total Male Female
Demography	Population	Index of population growth between censuses				Index	RSO - Population Census	2002 2002 2002	RS, CS+V, Districts, Municipalities	Total, Urban, Rural
Demography	Population	Mid-year population (estimation)				Number	RSO - Vital statistics	1990-2006 1990-2006 1991-2006	RS, CS+V, BG	Total
Demography	Population	Population by national or ethnic groups				Number	RSO - Population Census	1991, 2002 1991, 2002 2002	RS, CS+V, BG	Total, Serbs, Montenegrins, Yugoslavs, Albanians, Bosnians, Bulgarians, Bunjevci, Valachians, Goranci, Hungarians, Macedonians, Muslims, Germans, Roma, Rumanians, Russians, Ruthenians, Slovaks, Slovenians, Ukrainians, Croatians, Chechs, Other, Non declared and undefined, Regional affiliation, Unknown, Male, Female 0-19, 20-39, 40-59, 60 and more, 80 and more
Demography	Population	Population by major contingents				Number	RSO - Population Census	1991, 2002 1991, 2002 2002	RS, CS+V, BG	Total, Under 7 years, 7-14 years, 15-27 years, Population over 60 years, Capable of working total, Capable of working male, Capable of working female, Female population aged 15-49 years, Population over 60 years - share of total (%), Capable of working population - share of total (%), Male, Female
Demography	Population	Population by age groups				Number	RSO - Population Census	1991, 2002 1991, 2002 2002	RS, CS+V, BG	Total, 00-04, 05-09, 10-14, 15-19, 20-24, 25-29, 30-34, 35-39, 40-44, 45-49, 50-54, 55-59, 60-64, 65-69, 70-74, 75-79, 80-84, 85-89, 90-94, 95 and over, Unknown, Male, Female
Demography	Population	Population by municipalities				Number	RSO - Population Census	1991, 2002 1991, 2002 1991, 2002	RS, CS+V, Districts, Municipalities	Total
Demography	Population	Population by censuses				Number	RSO - Population Census	1981, 1991, 2002 1981, 1991, 2002 1981, 1991, 2002	RS, CS+V, BG	Total Male Female

Sector	Class	Indicator	NPA	MDG	PRS	Unit	Source	Years	Levels	Sub-population
Demography	Population	Population aged 15 and over by educational attainment				Percent	RSO - Population Census	2002 2002 2002	RS, CS+V, BG	Without educational attainment, 1-7 classes of primary school, Primary education, Secondary education, High education, Higher education, Unknown, Without educational attainment - Male, 1-7 classes of primary school - Male, Primary education - Male, Secondary education - Male, High education - Male, Higher education - Male, Unknown - Male, Without educational attainment - Female, 1-7 classes of primary school - Female, Primary education - Female, Secondary education - Female, High education - Female, Higher education - Female, Unknown - Female
Demography	Population	Population aged 0 yrs				Number	RSO - Population Census	1991, 2002 1991, 2002 1991, 2002	RS, CS+V, Districts, Municipalities	Total Male Female
Demography	Population	Population aged 1 yrs				Number	RSO - Population Census	1991, 2002 1991, 2002 1991, 2002	RS, CS+V, Districts, Municipalities	Total Male Female
Demography	Population	Population aged 10 yrs				Number	RSO - Population Census	1991, 2002 1991, 2002 1991, 2002	RS, CS+V, Districts, Municipalities	Total Male Female
Demography	Population	Population aged 11 yrs				Number	RSO - Population Census	1991, 2002 1991, 2002 1991, 2002	RS, CS+V, Districts, Municipalities	Total Male Female
Demography	Population	Population aged 12 yrs				Number	RSO - Population Census	1991, 2002 1991, 2002 1991, 2002	RS, CS+V, Districts, Municipalities	Total Male Female
Demography	Population	Population aged 13 yrs				Number	RSO - Population Census	1991, 2002 1991, 2002 1991, 2002	RS, CS+V, Districts, Municipalities	Total Male Female
Demography	Population	Population aged 14 yrs				Number	RSO - Population Census	1991, 2002 1991, 2002 1991, 2002	RS, CS+V, Districts, Municipalities	Total Male Female
Demography	Population	Population aged 15 yrs				Number	RSO - Population Census	1991, 2002 1991, 2002 1991, 2002	RS, CS+V, Districts, Municipalities	Total Male Female
Demography	Population	Population aged 16 yrs				Number	RSO - Population Census	1991, 2002 1991, 2002 1991, 2002	RS, CS+V, Districts, Municipalities	Total Male Female
Demography	Population	Population aged 17 yrs				Number	RSO - Population Census	1991, 2002 1991, 2002 1991, 2002	RS, CS+V, Districts, Municipalities	Total Male Female

Sector	Class	Indicator	NPA	MDG	PRS	Unit	Source	Years	Levels	Sub-population
Demography	Population	Population aged 18 yrs				Number	RSO - Population Census	1991, 2002 1991, 2002 1991, 2002 1991, 2002	RS, CS+V, Districts, Municipalities	Total Male Female
Demography	Population	Population aged 19 yrs				Number	RSO - Population Census	1991, 2002 1991, 2002 1991, 2002 1991, 2002	RS, CS+V, Districts, Municipalities	Total Male Female
Demography	Population	Population aged 2 yrs				Number	RSO - Population Census	1991, 2002 1991, 2002 1991, 2002 1991, 2002	RS, CS+V, Districts, Municipalities	Total Male Female
Demography	Population	Population aged 20 yrs				Number	RSO - Population Census	1991, 2002 1991, 2002 1991, 2002 1991, 2002	RS, CS+V, Districts, Municipalities	Total Male Female
Demography	Population	Population aged 3 yrs				Number	RSO - Population Census	1991, 2002 1991, 2002 1991, 2002 1991, 2002	RS, CS+V, Districts, Municipalities	Total Male Female
Demography	Population	Population aged 4 yrs				Number	RSO - Population Census	1991, 2002 1991, 2002 1991, 2002 1991, 2002	RS, CS+V, Districts, Municipalities	Total Male Female
Demography	Population	Population aged 5 yrs				Number	RSO - Population Census	1991, 2002 1991, 2002 1991, 2002 1991, 2002	RS, CS+V, Districts, Municipalities	Total Male Female
Demography	Population	Population aged 6 yrs				Number	RSO - Population Census	1991, 2002 1991, 2002 1991, 2002 1991, 2002	RS, CS+V, Districts, Municipalities	Total Male Female
Demography	Population	Population aged 7 yrs				Number	RSO - Population Census	1991, 2002 1991, 2002 1991, 2002 1991, 2002	RS, CS+V, Districts, Municipalities	Total Male Female
Demography	Population	Population aged 8 yrs				Number	RSO - Population Census	1991, 2002 1991, 2002 1991, 2002 1991, 2002	RS, CS+V, Districts, Municipalities	Total Male Female
Demography	Population	Population aged 9 yrs				Number	RSO - Population Census	1991, 2002 1991, 2002 1991, 2002 1991, 2002	RS, CS+V, Districts, Municipalities	Total Male Female
Demography	Population	Population density				People per sq km	RSO - Population Census	1991, 2002 1991, 2002 1991, 2002 1991, 2002 1991, 2002	RS, CS+V BG Districts Municipalities	Total
Demography	Population by locality	Urban population				Number	RSO - Population Census	1991, 2002 1991, 2002 2002 2002	RS, CS+V, Districts, Municipalities	Total Male Female
Demography	Population by locality	Rural population				Number	RSO - Population Census	1991, 2002 1991, 2002 2002 2002	RS, CS+V, Districts, Municipalities	Total Male Female

Sector	Class	Indicator	NPA	MDG	PRS	Unit	Source	Years	Levels	Sub-population
Demography	Vital Statistics	Life expectancy at birth			X	Years	RSO - Vital statistics	2000-2003 2000-2003 2002,2003	RS, CS+V, BG	Total, Male, Female
Demography	Vital Statistics	Natural increase - number				Number	RSO - Vital statistics	1990-2003 1990-2003 1990-2003	RS, CS+V, BG	Total
Demography	Vital Statistics	Natural increase rate				Rate	RSO - Vital statistics	1990-2003 1990-2003 1990-2003	RS, CS+V, BG	Total
Demography	Vital Statistics	Age-specific fertility rate				Per 1000 women	RSO - Vital statistics	1990-2003 1990-2003 2002,2003	RS, CS+V, BG	Total 15-19 yr
Demography	Vital Statistics	Total fertility rate				Number	RSO - Vital statistics	1990-2003 1990-2003 2002,2003	RS, CS+V, BG	Total
Demography	Vital Statistics	Deaths - number				Number	RSO - Vital statistics	1990-2003 1990-2003 2002,2003	RS, CS+V, BG	Total Male Female
Demography	Vital Statistics	Deaths rate				Rate	RSO - Vital statistics	1990-2003 1990-2003 2002,2003	RS, CS+V, BG	Total Male Female
Demography	Vital Statistics	Livebirths - number				Number	RSO - Vital statistics	1990-2003 1990-2003 1990-2003	RS, CS+V, BG	Total Male Female
Demography	Vital Statistics	Livebirths rate				Rate	RSO - Vital statistics	1990-2003 1990-2003 2002,2003	RS, CS+V, BG	Total Male Female
Economy	Prices and exchange rate	Consumer price Index, annual average			X	Percent	RSO - Department of Prices	1990-1992, 1995-2004 1990-1992, 1995-2004 1992, 1995-2004 2000-2004	RS CS V BG	Total
Economy	Prices and exchange rate	Consumer price Index, end of period			X	Percent	RSO - Department of Prices	1990-1992, 1995-2004 1990-1992, 1995-2004 1992, 1995-2004 2000-2004	RS CS V BG	Total
Economy	Prices and exchange rate	Inflation (Indices of retail prices), annual average				Percent	RSO - Department of Prices	1990-1992, 1995-2004 1990-1992, 1995-2004 1992, 1995-2004 1990-1992, 1995-2004	RS CS V BG	Total
Economy	Prices and exchange rate	Inflation (Indices of retail prices), end of period				Percent	RSO - Department of Prices	1990-1992, 1995-2004 1990-1992, 1995-2004 1992, 1995-2004 1990-1992, 1995-2004	RS CS V BG	Total
Economy	Public Expenditure	Participation of consolidated public expenditure in GDP			X	Percent	Ministry of Finance	2001-2003	RS	Total
Economy	Public Expenditure	Participation of pensions in GDP				Percent	Ministry of Finance	2001-2003	RS	Total
Economy	Public Expenditure	Public expenditure on education as a percentage of GDP	X		X	Percent	Ministry of Finance	2001-2003	RS	Total
Economy	Public Expenditure	Public expenditure on social welfare as a percentage of GDP			X	Percent	Ministry of Finance	2001-2003	RS	Total
Economy	Public Expenditure	Public expenditure on healthcare as a percentage of GDP			X	Percent	Ministry of Finance	2001-2003	RS	Total
Economy	Public Expenditure	Fiscal deficit, participation in GDP			X	Percent	Ministry of Finance	2001-2003	RS	Total

Sector	Class	Indicator	NPA	MDG	PRS	Unit	Source	Years	Levels	Sub-population
Economy	Public Income	Level of consolidated public income in GDP			X	Percent	Ministry of Finance	2001-2004	RS	Total
Economy	Income	Poverty deficit			X	Percent	Ministry of Labour, Employment and Social Policy - LSMS	2002	RS	Total
Economy	Income	Gini inequality coefficient (according to expenditure)			X	Percent	Ministry of Labour, Employment and Social Policy - LSMS	2002	RS	Total
Economy	Income	Average level of income per consumer unit	X		X	Dinars	Ministry of Labor, Employment and Social Policy - LSMS	2002	RS	Total
Economy	Expenditure	Population with expenditure below the poverty line	X		X	Percent	Ministry of Labour, Employment and Social Policy - LSMS	2002	RS CS V BG	Total
Economy	Public Consumption	Households' expenditure on food as a share in total costs of households	X		X	Percent	Ministry of Labor, Employment and Social Policy - LSMS	2002	RS	Total
Economy	Public Consumption	Average level of expenditure per consumer unit	X		X	Dinars	Ministry of Labor, Employment and Social Policy - LSMS	2002	RS	Total
Economy	Public Consumption	25% share of the poorest in national expenditure			X	Percent	Ministry of Labor, Employment and Social Policy - LSMS	2002	RS	Total
Economy	Public Consumption	Monthly accommodation/housing costs as a share in total costs of households			X	Percent	Ministry of Labour, Employment and Social Policy - LSMS	2002	RS	Total
Economy	Production	GDP - estimation			X	In millions US\$	RSO - Department of National Accounts	2000-2003	RS	Total
Economy	Production	GDP per capita - estimation			X	US\$	RSO - Department of National Accounts	2000-2003	RS	Total
Economy	Production	National income per capita in national currency				Dinars	RSO - Department of National Accounts	2000-2002 2000-2002 2000, 2001	RS CS+V Municipalities	Total
Economy	Production	National income in national currency				In millions dinars	RSO - Department of National Accounts	2001	RS CS+V Districts Municipalities	Total
Economy	Production	Participation of investments in GDP			X	Percent	RSO - National Accounts	2000-2003	RS	Total
Economy	Production	Participation of export in GDP				Percent	RSO - National Accounts/External Trade	2000-2003	RS	Total
Economy	External Trade	Value of exports			X	In millions US\$	RSO - Department of External Trade	1990, 1991, 1996-2004 1990, 1991, 1996-2004	RS CS+V	Total
Economy	External Trade	Value of imports			X	In millions US\$	RSO - Department of External Trade	1990, 1991, 1996-2004 1990, 1991, 1996-2004	RS CS+V	Total
Economy (NEW MDG)	Trade	Share of poorest quintile in national consumption		X		Percent	Ministry of Labour, Employment and Social Policy - LSMS	2002, 2003 2002, 2003 2002, 2003	RS, CS+V, BG	Total
Economy	Employment	Unemployed according to ILO definition comparing to active population			X	Percent	RSO - Labor Force Survey (LFS)	1995-2003 1995-2003	RS CS+V	Total
Economy (NEW MDG)	Employment	Unemployment rate of 15-24 year-olds		X		Percent	RSO - Labor Force Survey (LFS)	2003	RS	Total 15-24 yr, Male 15-24 yr, Female 15-24 yr
Economy	Employment	Average salaries level in primary education comparing to total republic average				Percent	RSO - Average earnings per employee (RAD1 P)	1990-2004 1990-2004 1990-1995, 2000-2004	RS CS+V BG	Total
Economy	Employment	Average salaries level in secondary education comparing to total republic average				Percent	RSO - Average earnings per employee (RAD1 P)	1990-2004 1990-2004 1990-1995, 2000-2004	RS CS+V BG	Total
Economy	Employment	Average salaries			X	Dinars	RSO - Average earnings per employee (RAD1)	1990-2004 1990-2004 2000-2004 2000-2004	RS, CS+V, Districts, Municipalities	Total

Sector	Class	Indicator	NPA	MDG	PRS	Unit	Source	Years	Levels	Sub-population
Economy	Employment	Average salaries of teachers in primary education				Dinars	Ministry of Education and Sport - Department for monitoring teachers' education	2001-2006	RS	Total
Economy	Employment	Average salaries of teachers in secondary education				Dinars	Ministry of Education and Sport - Department for monitoring teachers' education	2001-2006	RS	Total
Economy	Employment	Employees				Number	RSO - Average earnings per employee (RAD1 P)	1990-2006 1990-2006 1990-2006 2000-2006 2000-2006	RS CS+V BG Districts, Municipalities	Total
Economy	Employment	Employees comparing to population number				Percent	RSO - Average earnings per employee (RAD1 P)	1991-2006 1991-2006 1991-2006	RS CS+V BG	Total
Women	Empowerment	Average salaries of women comparing to average salaries of men				Ratio	RSO - Average earnings per employee (RAD1 P)	2003, 2004 2003, 2004 2003, 2004	RS CS+V BG	Total
Women	Empowerment	Proportion of women in total number of employees				Percent	RSO - Average earnings per employee (RAD1 P)	1990-2006 1990-2006 1990-2006 2000-2006 2000-2006	RS CS+V BG Districts, Municipalities	Total
Women <i>(New MDG)</i>	Empowerment	Share of women in wage employment in the non-agricultural sector		X		Percent	Ministry of Labour, Employment and Social Policy LSMS	2002, 2003 2002, 2003 2002, 2003	RS, CS+V, BG	Total
Women	Empowerment	Proportion of seats held by women in national parliament		X	X	Percent	RSO - Department of Administration of Justice	2002, 2004	RS	Female
Information and Communication	Mass Media	Daily newspapers				Number	RSO - Department of Education	1990-2001 1990-2001	RS CS+V	Total
Information and Communication	Mass Media	Radio sets				Number	RSO - Survey on households' consumption	2000-2002 2000-2002	RS CS+V	Total
Information and Communication	Mass Media	Telephone subscribers				Number	Telekom Srbije and RSO - Department of Transport	2001 2001 2001 2001	RS CS+V BG Districts, Municipalities	Total
Nutrition	Anaemia	Prevalence of anaemia			X	Percent	UNICEF - survey of children and mothers (MICS)	2000 2000 2000 2000	SCG RS CS+V BG	Female 15-49 yr, Urban, Rural, 15-19, 20-24, 25-29, 30-34, 35-39, 40-44, 45-49, None/primary education, Secondary education, Higher/high education
Nutrition	Anaemia	Prevalence of anaemia in children	X		X	Percent	UNICEF - survey of children and mothers (MICS)	2000 2000 2000 2000	SCG, RS CS+V BG	Total 6-59 months, Urban, Rural, Male, Female, 6-11 months, 12-23 months, 24-35 months, 36-47 months, 48-59 months, None/primary education, Secondary education, Higher/high education
Nutrition	Breastfeeding	Exclusive breastfeeding rate	X			Percent	UNICEF - survey of children and mothers (MICS)	1996, 2000	SCG RS CS+V BG	Male, Female, Urban, Rural, Total
Nutrition	Breastfeeding	Timely complementary feeding rate				Percent	UNICEF - survey of children and mothers (MICS)	2000	SCG RS CS+V	Total 6-9 months, Urban, Rural, Male, Female, None/primary education, Secondary education, Higher/high education

Sector	Class	Indicator	NPA	MDG	PRS	Unit	Source	Years	Levels	Sub-population
Nutrition	Breastfeeding	Continued breastfeeding rate				Percent	UNICEF - survey of children and mothers (MICS)	2000	SCG RS CS+V	Total 12-15 months, Urban, Rural, Male, Female, None/primary education, Secondary education, Higher/high education
Nutrition	Iodine Deficiency Disorders	Proportion of households consuming iodised salt				Percent	UNICEF - survey of children and mothers (MICS)	2000 2000 2000	SCG RS CS+V BG	Total, Urban, Rural
Nutrition	Malnutrition	Prevalence of overweight (moderate and severe)	X			Percent	UNICEF - survey of children and mothers (MICS)	1996, 2000	SCG RS CS+V BG	Total < 5 yr, Urban, Rural, Male, Female, until 6 months, until 1 year, 6-11 months, 12-23 months, 24-35 months, 36-47 months, 48-59 months, None/primary education, Secondary education, Higher/high education
Nutrition	Malnutrition	Prevalence of underweight (severe) - weight for height				Percent	UNICEF - survey of children and mothers (MICS)	1996, 2000	SCG RS CS+V BG	Total < 5 yr, Urban, Rural, Male, Female, until 6 months, until 1 year, 6-11 months, 12-23 months, 24-35 months, 36-47 months, 48-59 months, None/primary education, Secondary education, Higher/high education
Nutrition	Malnutrition	Prevalence of underweight (moderate and severe)	X	X	X	Percent	UNICEF - survey of children and mothers (MICS)	1996, 2000	SCG RS CS+V BG	Total < 5 yr, Urban, Rural, Male, Female, until 6 months, until 1 year, 6-11 months, 12-23 months, 24-35 months, 36-47 months, 48-59 months, None/primary education, Secondary education, Higher/high education
Nutrition	Malnutrition	Proportion of infants with low birth weight	X			Percent	RSO - Vital statistics	1995-2003 1995-2003	RS CS+V	Total
Nutrition (NEW MDG)	Dietary Intake	Proportion of population below minimum level of dietary energy consumption		X		Percent	Ministry of Labour, Employment and Social Policy - LSMS	2002 2002 2002	RS, CS+V, BG	Total
Education	Access to Education	Preschool institutions	X		X	Number	RSO - Department of Education	1990-2004 1990-2004 1990-2004 2000-2004 2000-2004	RS CS+V BG Districts, Municipalities	Total
Education	Access to Education	Primary schools				Number	RSO - Department of Education	1990-2004 1990-2004 1990-2004 2000-2004 2000-2004	RS CS+V BG Districts, Municipalities	Total
Education	Access to Education	Secondary schools				Number	RSO - Department of Education	1990-2004 1990-2004 1990-2004 2000-2004 2000-2004	RS CS+V BG Districts, Municipalities	Total
Education	Access to Education	Percent of children by class enrolled in secondary education				Percent	RSO - Department of Education	1990-2004 1990-2004 1990-2004	RS CS+V BG	Total
Education	Educational Attainment	Population without completing of 4th grade of primary school (aged 15 and over)				Percent	RSO - Population Census	1991, 2002 1991, 2002 1991, 2002	RS CS+V BG	Total, Female
Education	Educational Attainment	Roma population without completing of primary school (aged 15 and over)				Percent	RSO - Population Census	1991, 2002 1991, 2002 1991, 2002	RS CS+V BG	Total

Sector	Class	Indicator	NPA	MDG	PRS	Unit	Source	Years	Levels	Sub-population
Education	Educational Attainment	Population aged 15 and over without educational attainment				Percent	RSO - Population Census	1991, 2002 1991, 2002 1991, 2002	RS CS+V BG	Total
Education	Gender Equity	Ratio of girls to boys in primary education		X	X	Ratio	RSO - Department of Education	1990-2004 1990-2004 1990-2004	RS, CS+V, BG	Total
Education	Gender Equity	Ratio of girls to boys in secondary education		X	X	Ratio	RSO - Department of Education	1990-2004 1990-2004 1990-2004	RS, CS+V, BG	Total
Education	Gender Equity	Ratio of girls to boys in tertiary education		X	X	Ratio	RSO - Department of Education	1990-2004 1990-2004 1990-2004	RS, CS+V, BG	Total
Education	Gender Equity	Women aged 15 and over without educational attainment				Percent	RSO - Population Census	1991, 2002 1991, 2002 1991, 2002	RS CS+V BG	Female
Education	Gender Equity	Ratio of literate women to men of 15-24 year-olds		X		Ratio	RSO - Population Census	1991, 2002 1991, 2002 1991, 2002	RS CS+V BG	Total 15-24 yr
Education	Literacy	Illiterate women per 100 women (population aged 10 and over)			X	Percent	RSO - Population Census	1991, 2002 1991, 2002 1991, 2002	RS CS+V BG	Total
Education	Literacy	Proportion of women in total number of illiterate population			X	Percent	RSO - Population Census	1991, 2002 1991, 2002 1991, 2002	RS CS+V BG	Total
Education (NEW MDG)	Literacy	Literacy rate of 15-24 year-olds		X		Percent	RSO - Population Census	2002	RS	Total 15-24 yr, Male 15-24 yr, Female 15-24 yr
Education	Preschool Education	Children enrolled in preschool education	X			Percent	RSO - Department of Education	1990-2004 1990-2004 1990-2004	RS CS+V BG	Total 3-7 yr
Education	Preschool Education	Children attending organized early childhood education programs				Percent	UNICEF - survey of children and mothers (MICS)	2000 2000 2000	SCG RS CS+V BG	Total 36-59 months, Urban, Rural, Male, Female, 36-47 months, 48-59 months, None/primary education, Secondary education, Higher/high education
Education	Preschool Education	Preschool education groups	X			Number	RSO - Department of Education	1990-2004 1990-2004 1990-2004	RS CS+V BG	Total
Education	Primary Education	Proportion of pupils starting grade 1 who reach grade 5		X	X	Percent	RSO - Department of Education	2000-2004 2000-2004 2000-2004	RS CS+V BG	Total, Male, Female
Education	Primary Education	Children enrolled in primary education				Number	RSO - Department of Education	1990-2004 1990-2004 1990-2004 2000-2004 2000-2004	RS CS+V BG Districts, Municipalities	Total, Male, Female
Education	Primary Education	Net enrolment ratio in primary education	X	X	X	Percent	RSO - Department of Education	2000-2004 2000-2004 2000-2004	RS CS+V BG	Total, Male, Female
Education	Primary Education	Primary completion rate		X		Rate	RSO - Department of Education	1994-2004 1994-2004 2000-2004	RS CS+V BG	Total, Male, Female

Sector	Class	Indicator	NPA	MDG	PRS	Unit	Source	Years	Levels	Sub-population
Education	Primary Education	Settlements with elementary school				Percent	RSO - Department of Education	2000, 2002, 2004 2000, 2002, 2004 2000, 2002, 2004 2000, 2002, 2004	RS CS+V BG Municipalities	Total
Education	Primary Education	Teachers trained for new system of primary education				Number	Ministry of Education and Sport - Department for monitoring teachers' education	2003	RS	Total
Education	Primary Education	Pupil per teacher in primary education			X	Number	RSO - Department of Education	1990-2004 1990-2004 1990-2004	RS CS+V BG	Total
Education	Primary Education	Children with disabilities in primary education			X	Number	RSO - Department of Education	1990-2004 1990-2004 1990-2004	RS CS+V BG	Total, Male, Female
Education	Secondary Education	Secondary completion rate	X			Percent	RSO - Department of Education	2000-2004 2000-2004 2000-2004	RS CS+V BG	Total
Education	Secondary Education	Children enrolled in secondary education				Number	RSO - Department of Education	1990-2004 1990-2004 1990-2004 2000-2004 2000-2004	RS CS+V BG Districts, Municipalities	Total, Male, Female
Education	Secondary Education	Net enrollment ratio in secondary education	X		X	Percent	RSO - Department of Education	1990-2004 1990-2004 1990-2004	RS CS+V BG	Total, Female
Education	Secondary Education	Settlements with secondary schools				Percent	RSO - Department of Education	2002, 2004 2002, 2004 2002, 2004	RS CS+V Municipalities	Total
Education	Secondary Education	Teachers trained for new system of secondary education				Number	Ministry of Education and Sport - Department for monitoring teachers' education	2003	RS	Total
Education	Secondary Education	Pupil per teacher in secondary education			X	Number	RSO - Department of Education	1990-2004 1990-2004 1990-2004	RS CS+V BG	Total
Environment	Environmental Resources	Land area covered by forest				ha	RSO - Department of Forestry	2000-2003 2000-2003 2000-2003 2000-2003	RS, CS+V, Districts, Municipalities	Total
Environment	Environmental Resources	Proportion of land area covered by forest		X	X	Percent	RSO - Department of Forestry	2000-2003 2000-2003 2000-2003 2000-2003	RS, CS+V, Districts, Municipalities	Total
Environment (NEW MDG)	Energy	Proportion of population using solid fuels		X		Percent	Ministry of Labour, Employment and Social Policy - LSMS	2002, 2003 2002, 2003 2002, 2003	RS, CS+V, BG	Total
Environment	Sanitation	Households with public service of garbage disposal				Percent	UNICEF - survey of children and mothers (MICS)	1996, 2000	SCG RS CS+V BG	Total, Urban, Rural
Environment	Sanitation	Households disposing garbage at a public dump				Percent	UNICEF - survey of children and mothers (MICS)	1996, 2000	SCG RS CS+V BG	Total, Urban, Rural
Environment	Sanitation	Households burning or disposing garbage near the house				Percent	UNICEF - survey of children and mothers (MICS)	1996, 2000	SCG RS CS+V BG	Total, Urban, Rural

Sector	Class	Indicator	NPA	MDG	PRS	Unit	Source	Years	Levels	Sub-population
Environment	Sanitation	Population using improved or traditional pit latrine for excreta disposal				Percent	UNICEF - survey of children and mothers (MICS)	1996, 2000	SCG RS CS+V BG	Total, Urban, Rural
Environment	Sanitation	Population using sewage system for excreta disposal			X	Percent	UNICEF - survey of children and mothers (MICS)	1996, 2000	SCG RS CS+V BG	Total, Urban, Rural
Environment	Sanitation	Population using septic tank for excreta disposal				Percent	UNICEF - survey of children and mothers (MICS)	1996, 2000	SCG RS CS+V BG	Total, Urban, Rural
Environment	Sanitation	Households disposing garbage at an illegal dump				Percent	UNICEF - survey of children and mothers (MICS)	1996, 2000	SCG RS CS+V BG	Total, Urban, Rural
Environment	Sanitation	Proportion of population with access to improved sanitation		X	X	Percent	UNICEF - survey of children and mothers (MICS)	1996, 2000	SCG RS CS+V BG	Total, Urban, Rural
Environment	Water	Proportion of population with sustainable access to an improved water source		X	X	Percent	UNICEF - survey of children and mothers (MICS)	2000	SCG RS CS+V BG	Total, Urban, Rural
Environment	Water	Population using tube well water				Percent	UNICEF - survey of children and mothers (MICS)	1996, 2000	SCG RS CS+V BG	Total, Urban, Rural
Environment	Water	Population using piped water				Percent	UNICEF - survey of children and mothers (MICS)	1996, 2000	SCG RS CS+V BG	Total, Urban, Rural
Environment	Water	Plumbing with adequate quality of water (physical-chemical)			X	Percent	Serbian Healthcare Institute	1993-2003 1994-2003 1994-2003	RS, CS+V, BG	Total
Environment	Housing	Price per m2 of apartment (contractual price of newly-built apartments, in dinars)			X	Dinars	RSO - Department of Construction	2000-2003 2000-2003 2000-2003	RS CS+V BG	Total
Environment	Housing	Built apartments			X	Per 1000 persons	RSO - Department of Construction	2000-2002 2000-2002 2000-2002 2000-2002	RS, CS+V, Districts, Municipalities	Total
Environment	Housing	Floor space per capita			X	m2	RSO - Population Census	2002 2002 2002	RS CS+V BG	Total
Environment	Housing	Settlements				Number	RSO - Department of Territorial Organisation	2002 2002 2002 2002	RS, CS+V, Districts, Municipalities	Total
Environment	Housing	Area				KM2	Republic Geodetic Office	2002 2002 2002	RS, CS+V, Districts, Municipalities	Total
Social Care	Children with disabilities	Children with disabilities continuing their education after completing primary school	X			Percent	RSO - Department of Education	2000-2003 2000-2003 2000-2003	RS CS+V BG	

Sector	Class	Indicator	NPA	MDG	PRS	Unit	Source	Years	Levels	Sub-population
Social Care	Children with disabilities	Children with disabilities using FMS	X			Number	Ministry of Labor, Employment and Social Policy - Recipients of Social Assistance Data Base	2002-2002	RS CS+V	Total
Social Care	Children with disabilities	Children with disabilities receiving social assistance	X			Number	Ministry of Labor, Employment and Social Policy - Recipients of Social Assistance Data Base	2000-2004 2000-2004 2000-2004	RS CS+V BG	Ukupno
Social Care	Children with disabilities	Children with disabilities involved in education	X			Number	RSO - Department of Education	2000-2004 2000-2004 2000-2004	RS CS+V BG	Total
Social Care	Children with disabilities	Children in stationary special institutions	X			Number	RSO - Department of Education	2000-2004 2000-2004 2000-2004	RS CS+V BG	Total
Social Care	Access to Social Services	Families receiving MOP	X			Number	Ministry of Labor, Employment and Social Policy - Recipients of Social Assistance Data Base	2000-2004 2000-2004 2000-2004 2000-2004	RS, CS+V, Districts, Municipalities	Total
Social Care	Access to Social Services	Households in which at least one child receives child allowance	X			Number	Ministry of Labor, Employment and Social Policy - Recipients of Social Assistance Data Base	2002-2004 2000-2004 2002-2004 2002-2004	RS, CS+V, Districts, Municipalities	Total
Social Care	Child Protection	Adopted children without parental care	X			Number	Ministry of Labor, Employment and Social Policy - Centers for Social Work	2001-2003	RS	Total, Male, Female
Social Care	Child Protection	Children without parental care accommodated in households				Number	Ministry of Labor, Employment and Social Policy - Centers for Social Work	2001-2004	RS	Total
Social Care	Child Protection	Children on guardianship care				Number	Ministry of Labor, Employment and Social Policy - Centers for Social Work	2001-2003	RS	Total
Social Care	Child Protection	Children without parental care abounded by parents				Number	Ministry of Labor, Employment and Social Policy - Centers for Social Work	2001-2003	RS	Total
Social Care	Child Protection	Children without parental care taken away from their parents				Number	Ministry of Labor, Employment and Social Policy - Centers for Social Work	1998-2003	RS	Total
Social Care	Child Protection	Children without parental care whose parents are deprived of parental rights				Number	Ministry of Labor, Employment and Social Policy - Centers for Social Work	1998-2003	RS	Total
Social Care	Child Protection	Children without parental care whose parents are unknown				Number	Ministry of Labor, Employment and Social Policy - Centers for Social Work	2001-2003	RS	Total
Social Care	Child Protection	Children without parental care whose parents are prevented from carrying out their parental responsibilities				Number	Ministry of Labor, Employment and Social Policy - Centers for Social Work	2001-2003	RS	Total
Social Care	Child Protection	Children without parental care whose parents deceased				Number	Ministry of Labor, Employment and Social Policy - Centers for Social Work	2001-2003	RS	Total
Social Care	Child Protection	Children without parental care accommodated in institutions	X			Number	RSO - Department of Education	2000-2004 2000-2004 2000-2004	RS CS+V BG	Total

Sector	Class	Indicator	NPA	MDG	PRS	Unit	Source	Years	Levels	Sub-population
Social Care	Child Protection	Child allowance beneficiaries	X			Number	Ministry of Labor, Employment and Social Policy - Recipients of Social Assistance Data Base	2000-2002 2002-2004 2002-2004	RS, CS+V, Districts, Municipalities	Total
Social Care	Child Abuse and Neglect	Abused and neglected children registered by the centres for social work	X		X	Number	Ministry of Labor, Employment and Social Policy - Centers for Social Work	2001, 2002	RS	Total, Physically, Sexually, Emotionally, Neglected
Social Care	Child Abuse and Neglect	Criminal charges for child abuse and neglect				Number	Ministry of Labor, Employment and Social Policy - Centers for Social Work	2001, 2002	RS	Total
Health	Immunisation	Proportion of 1 year-old children immunised against diphtheria, tetanus and pertussis	X			Percent	Serbian Healthcare Institute - Epidemiology	1991-2003 1990-2004 1990-2004	RS, CS+V, BG	Total
Health	Immunisation	Proportion of 1 year-old children immunised against measles	X	X	X	Percent	Serbian Healthcare Institute - Epidemiology	1991, 1993-2004 1990-2004 1990-2004	RS, CS+V, BG	Total 1 yr
Health	Safe Motherhood	Maternity wards certified as "Baby Friendly Hospitals"	X			Number	Serbian Healthcare Institute - Health institutions	1996-2004	RS, CS+V, BG	Total
Health	Safe Motherhood	Proportion of births attended by skilled health personnel		X	X	Percent	RSO - Vital statistics	1990-2003 1990-2003 1990-2003	RS CS+V BG	Total
Health	Safe Motherhood	Youth pregnancies (girls aged 15-19 years)	X			Rate	Serbian Healthcare Institute - Health institutions	1999-2003	RS, CS+V, Districts	Total
Health	Safe Motherhood	Youth pregnancy terminations among girls (girls aged 15-19 years)	X			Rate	Serbian Healthcare Institute - Health institutions	1995-2003 1995-2003 1998-2003	RS, CS+V, Districts	Total
Health	Safe Motherhood	Women aged 15 - 49 who regularly visit gynaecologist				Percent	Serbian Healthcare Institute - Survey on Population Health Status	2000 2000 2000	RS, CS+V, BG	Total
Health	Safe Motherhood	Condom use rate of the contraceptive prevalence rate		X		Percent	UNICEF - survey of children and mothers (MICS)	2000 2000 2000	RS, CS+V, BG	Female 15-49 yr, Urban, Rural, 15-19, 20-24, 25-49, None/primary education, Secondary education, Higher/high education
Health	Safe Motherhood	Population that uses condoms regularly	X			Percent	Serbian Healthcare Institute - Survey on Population Health Status	2000 2000 2000	RS, CS+V, BG	Total
Health	Safe Motherhood	Contraceptive prevalence rate		X	X	Percent	UNICEF - survey of children and mothers (MICS)	2000	SCG, RS, CS+V, BG	Female 15-49 yr, Urban, Rural, 15-19, 20-24, 25-49, None/primary education, Secondary education, Higher/high education
Health	Mortality	Accidents, poisonings and violence mortality rate	X			Percent	RSO - Vital statistics	1990-2003 1990-2003	RS CS+V	Total < 18 yr
Health	Mortality	Death cases caused by measles				Number	RSO - Vital statistics	1990-2003 1990-2003	RS CS+V	Total < 5 yr
Health	Mortality	Death cases caused by ARI (acute respiratory infections)	X			Number	RSO - Vital statistics	1990-2003 1990-2003	RS CS+V	Total < 5 yr
Health	Mortality	Death cases caused by diarrhoea	X			Number	RSO - Vital statistics	1990-2003 1990-2003	RS CS+V	Total < 5 yr

Sector	Class	Indicator	NPA	MDG	PRS	Unit	Source	Years	Levels	Sub-population
Health	Child Survival	Prenatal mortality rate	X			Rate	RSO - Vital statistics	1990-2009 1990-2009	RS CS+V	Total
Health	Child Survival	Under-five mortality rate	X	X	X	Deaths per 1000 live births	RSO - Vital statistics	1990-2009 1990-2009	RS CS+V	Total Male Female
Health	Child Survival	Infant mortality rate	X	X	X	Deaths per 1000 live births	RSO - Vital statistics	1990-2009 1990-2009	RS CS+V	Total Male Female
Health	Maternal Survival	Maternal mortality ratio	X	X	X	Deaths per 100,000 live births	RSO - Vital statistics	1990-2009 1990-2009	RS CS+V	Total
Health	Morbidity	ARI (acute respiratory infections) cases among children aged 0 to 59 months in two weeks before survey having adequate hospital treatment				Percent	UNICEF - survey of children and mothers (MICS)	2000	SCG RS CS+V BG	Total, Urban, Rural, Male, Female, until 6 months, 6-11 months, 12-23 months, 24-35 months, 36-47 months, 48-59 months, None/primary education, Secondary education, Higher/high education
Health	Morbidity	Diarrhoea cases among children aged 0 to 59 months in two weeks before survey who received ORT (oral rehydration therapy) or recommended home fluids				Percent	UNICEF - survey of children and mothers (MICS)	1996, 2000	SCG RS CS+V BG	Total, Urban, Rural, Male, Female, until 6 months, 6-11 months, 12-23 months, 24-35 months, 36-47 months, 48-59 months, None/primary education, Secondary education, Higher/high education
Health	Morbidity	Diarrhoea cases among children aged 0 to 59 months in two weeks before survey taking more fluids and eating improved food				Percent	UNICEF - survey of children and mothers (MICS)	1996, 2000	SCG RS CS+V BG	Total, Urban, Rural, Male, Female, until 6 months, 6-11 months, 12-23 months, 24-35 months, 36-47 months, 48-59 months, None/primary education, Secondary education, Higher/high education
Health	Morbidity	Diarrhoea - annual number of reported cases per child aged 6 years (estimation)				Per capita	UNICEF - survey of children and mothers (MICS)	1996, 2000	SCG RS CS+V BG	Total, Urban, Rural, Male, Female, until 6 months, 6-11 months, 12-23 months, 24-35 months, 36-47 months, 48-59 months, None/primary education, Secondary education, Higher/high education
Health	Morbidity	Measles - annual number of reported cases in children under 6 years				Number	Serbian Healthcare Institute - Statistics of diseases	1996-2009 1996-2009	RS, CS+V	Total
Health	Morbidity	Neonatal tetanus - annual number of reported cases	X			Number	Serbian Healthcare Institute - Statistics of diseases	1990-2009 1990-2009 1990-2009	RS, CS+V, BG	Total
Health	Morbidity	Diarrhoea morbidity - children under 5	X			Percent	UNICEF - survey of children and mothers (MICS)	1996, 2000	SCG RS CS+V BG	Total, Urban, Rural, Male, Female, until 6 months, 6-11 months, 12-23 months, 24-35 months, 36-47 months, 48-59 months, None/primary education, Secondary education, Higher/high education

Sector	Class	Indicator	NPA	MDG	PRS	Unit	Source	Years	Levels	Sub-population
Health	Morbidity	Respiratory infections morbidity - children under 5	X			Percent	UNICEF - survey of children and mothers (MICS)	2000	SCG RS CS+V BG	Total, Urban, Rural, Male, Female, until 6 months, 6-11 months, 12-23 months, 24-35 months, 36-47 months, 48-59 months, None/primary education, Secondary education, Higher/high education
Health	Morbidity	Poliomyelitis - annual number of reported cases	X			Number	Serbian Healthcare Institute - Statistics of diseases	1990-2009 1990-2009 1990-2009	RS, CS+V, BG	Total
Health	Morbidity	Sexual transmitted infections of adolescents (aged 15 - 19)	X			Rate	Serbian Healthcare Institute	1999-2009 1999, 2000, 2002-2004	RS, CS+V	Total
Health	Morbidity	External causes of morbidity - children under 19	X		X	Percent	Serbian Healthcare Institute - Health institutions	1997-2009	RS CS+V Districts	Total
Health	Tuberculosis	Prevalence of tuberculosis		X	X	Per 100,000 population	Serbian Healthcare Institute - Statistics of diseases	1995-2009 1995-2004 1995-2004	RS, CS+V, BG	Total
Health	Tuberculosis	Death rate associated with tuberculosis		X	X	Per 100,000 population	RSO - Vital statistics	1990-2009 1990-2009	RS CS+V	Total
Health	HIV/AIDS	HIV infected registered persons			X	Number	Serbian Healthcare Institute - Statistics of diseases	1985-2009 1985-2009 1985-2009	RS CS+V BG	Total
Health	HIV/AIDS	Death cases caused by AIDS				Number	Serbian Healthcare Institute - Statistics of diseases	1985-2009 1985-2009 1985-2009	RS CS+V BG	Total
Health	HIV/AIDS	Knowledge of HIV/AIDS				Percent	UNICEF - survey of children and mothers (MICS)	2000	SCG, RS, CS+V, BG	Total, Urban, Rural, 15-19, 20-24, 25-29, 30-34, 35-39, 40-44, 45-49, None/primary education, Secondary education, Higher/high education
Health	HIV/AIDS	Women who have been tested for HIV				Percent	UNICEF - survey of children and mothers (MICS)	2000	SCG, RS, CS+V, BG	Female 15-49 yr, Urban, Rural, 15-19, 20-24, 25-29, 30-34, 35-39, 40-44, 45-49, None/primary education, Secondary education, Higher/high education
Health	HIV/AIDS	Women who know where to be tested for HIV				Percent	UNICEF - survey of children and mothers (MICS)	2000	SCG, RS, CS+V, BG	Female 15-49 yr, Urban, Rural, 15-19, 20-24, 25-29, 30-34, 35-39, 40-44, 45-49, None/primary education, Secondary education, Higher/high education
Health	HIV/AIDS	Knowledge of mother-to-child transmission of HIV				Percent	UNICEF - survey of children and mothers (MICS)	2000	SCG, RS, CS+V, BG	Female 15-49 yr, Urban, Rural, 15-19, 20-24, 25-29, 30-34, 35-39, 40-44, 45-49, None/primary education, Secondary education, Higher/high education
Health	Substance Abuse	Children smoking	X		X	Percent	Serbian Healthcare Institute - Survey on Population Health Status	2000 2000 2000	RS, CS+V, BG	Total
Health	Substance Abuse	Children using alcohol	X		X	Percent	Serbian Healthcare Institute - Survey on Population Health Status	2000 2000 2000	RS, CS+V, BG	Total
Health	Substance Abuse	Children using drugs	X		X	Percent	Serbian Healthcare Institute - Survey on Population Health Status	2000 2000 2000	RS, CS+V, BG	Total

Sector	Class	Indicator	NPA	MDG	PRS	Unit	Source	Years	Levels	Sub-population
Health	Health Service	Beneficiaries' satisfaction with services provided by healthcare workers	X		X	Rate	Serbian Healthcare Institute - Survey on Population Health Status	2000	RS, CS+V, BG	Total
Health	Health Care	Hospital beds			X	Per 1000 population	Serbian Healthcare Institute - Health institutions	1999-2003 1999-2003 1999-2003	RS, CS+V, BG	Total
Health	Health Care	Primary health protection of children rate	X			Rate	Serbian Healthcare Institute - Health institutions	1997-2003	RS, CS+V, Districts	Total
Health	Health Care	Hospitalised children rate	X			Rate	Serbian Healthcare Institute - Health institutions	1996, 2003	RS, CS+V, Districts	Total
Health	Health Care	General practitioners			X	Per 1000 persons	Serbian Healthcare Institute - Health institutions	1999-2003 1999-2003 1999-2003 1999-2003	RS, CS+V, BG, Municipalities	Total

Legend (level): RS - Republic of Serbia, SCG - Serbia and Montenegro
CS - Central Serbia
V - Vojvodina
BG - City of Belgrade

Legend: NPA - (National Plan of Action for Children)
MDG - (Millennium Development Goals)
PRS - (Poverty Reduction Strategy)