



DevInfo Serbia database
– info –

Issue No. 1

Belgrade, May 2005



DevInfo database – basic information

DevInfo technology offers a database system to organize, store and display data in uniform format to facilitate data sharing between government departments and UN agencies using the same system, in order to monitor social development.

It is integrated environment with unique possibility of connecting indicators with strategic frames like National Plan of Action for Children (NPA) or Millennium Development Goals (MDG – <http://millenniumindicators.un.org>), in order to monitor their realization.

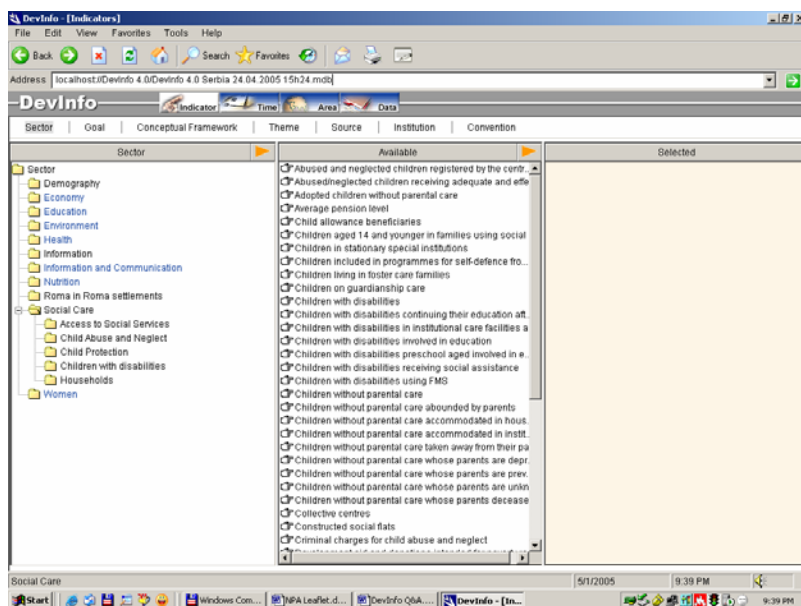
DevInfo is presently a stand-alone tool to assist countries in their reporting. The Internet version of DevInfo software is in final testing phase and will be released during 2005.

The program offers efficient, user-friendly interface, that can be used to produce tables, graphs and maps, for their further inclusion in various reports, documents, advocacy materials, newspaper articles and alike.

There is the set of 48 MDG indicators defined in the core database system that could be changed only by the global DevInfo database administrator. In addition to this predefined set of MDG indicators, locally defined indicators and goals are supported by the system. Therefore, at regional and country levels Database administrators have the option to add their own sets of local indicators as well as goals to the databases.

The official Internet address of DevInfo system is <http://www.DevInfo.org>

Database organization and contents



DevInfo user-interface

DevInfo database contains reach set of indicators on all most important parameters of social development.

Database indicators could be organized and accessed in many different ways:

- Sector
- Goal
- Conceptual Framework
- Theme
- Source
- Institution
- Convention

DevInfo database stores info on time periods, geographic areas, units, sub populations (type of disaggregation) and sources in addition to the data itself. The primary search method for data is by sectors.

DevInfo database for Serbia is produced in two language versions: Serbian and English. The table given below presents the structure of their contents

The structure of database contents:

Sectors (9)	Time periods (21)	Geographic areas (6 levels)
<ul style="list-style-type: none"> • Demography (57 indicators) • Economy (35 indicators) • Information (3 indicators) • Nutrition (10 indicators) • Education (31 indicators) • Environment (19 indicators) • Social Care (20 indicators) • Health (45 indicators) • Women (2 indicators) 	<p>1981 - 2004</p>	<ul style="list-style-type: none"> • Serbia and Montenegro • Republic of Serbia • Central Serbia • Vojvodina • Districts (25) • Municipalities (162)

DevInfo database supports the adding of the additional goals at your own will. Presently, National Plan of Action for Children (NPA) and MDG (Millennium Development Goals) were entered into database. Data exists for:

NPA	MDG
54 indicators	15 indicators

Both *DevInfo* database language versions could be downloaded from the Republic Statistical Office' official Internet address: <http://www.statserb.sr.gov.yu>. The detailed list for all indicators having data in *DevInfo* database is given at the end of this document.

DevInfo database – possibilities

DevInfo enables you to create three types of reports: tables, graphs and maps. The produced reports could be saved in Gallery or at any other location.

Area Name	2000	2001	2002	2003
Serbia	2389	5840	9208	11500
Central Serbia	2307	5541	8742	11145
Kragujevac	1861	4798	8175	10281
Pirot	1732	5053	7150	9252
Sjenica	1883	3944	5695	6896

	Poor
	Medium
	Good

Source
RSO - Department of Labour Force (RAD1)

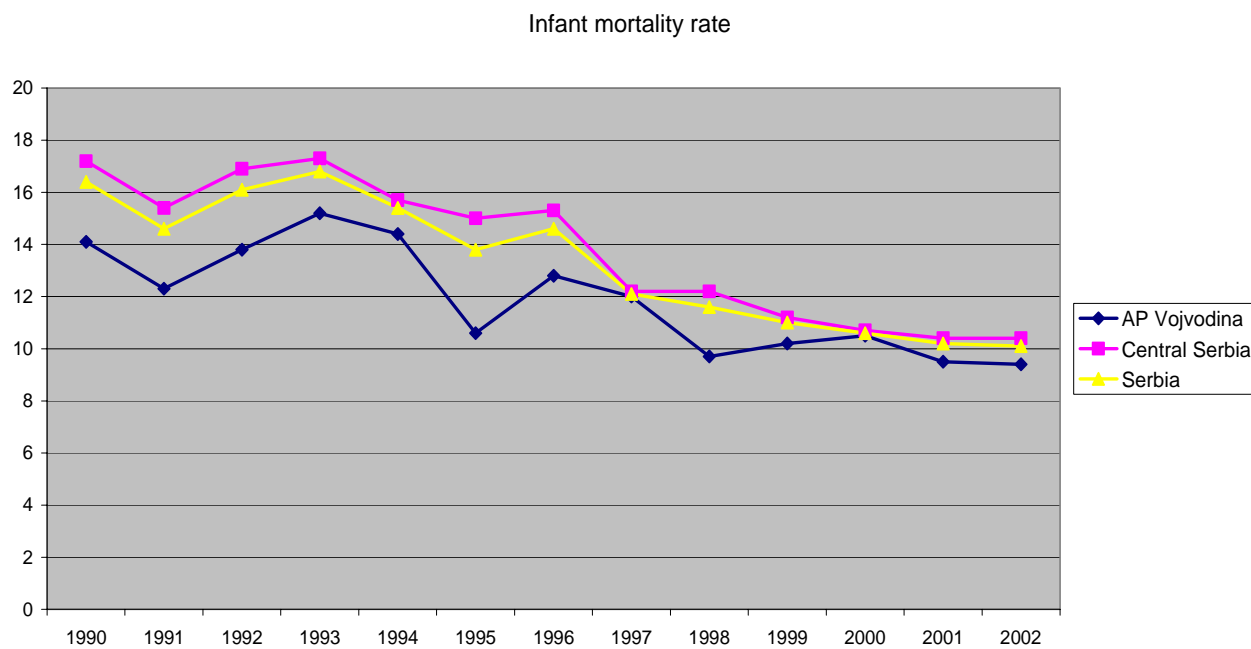
The view and contents of tables being created (in Excel format) could be precisely set by *DevInfo* application and/or later in MS Excel. The program enables you to:

- Select which parameters will be shown in rows and columns
- Set table view (font size, colors and others)

The picture shown at the left is an example of the table created in the *DevInfo* program.

...

In *DevInfo* you can create the graphs of any type with the help of Microsoft Graph program that is component of Microsoft Office program package. Microsoft Office has to be installed on each computer running *DevInfo*. The picture showed below presents the Infant mortality rate in the time period 1990 – 2002.



...

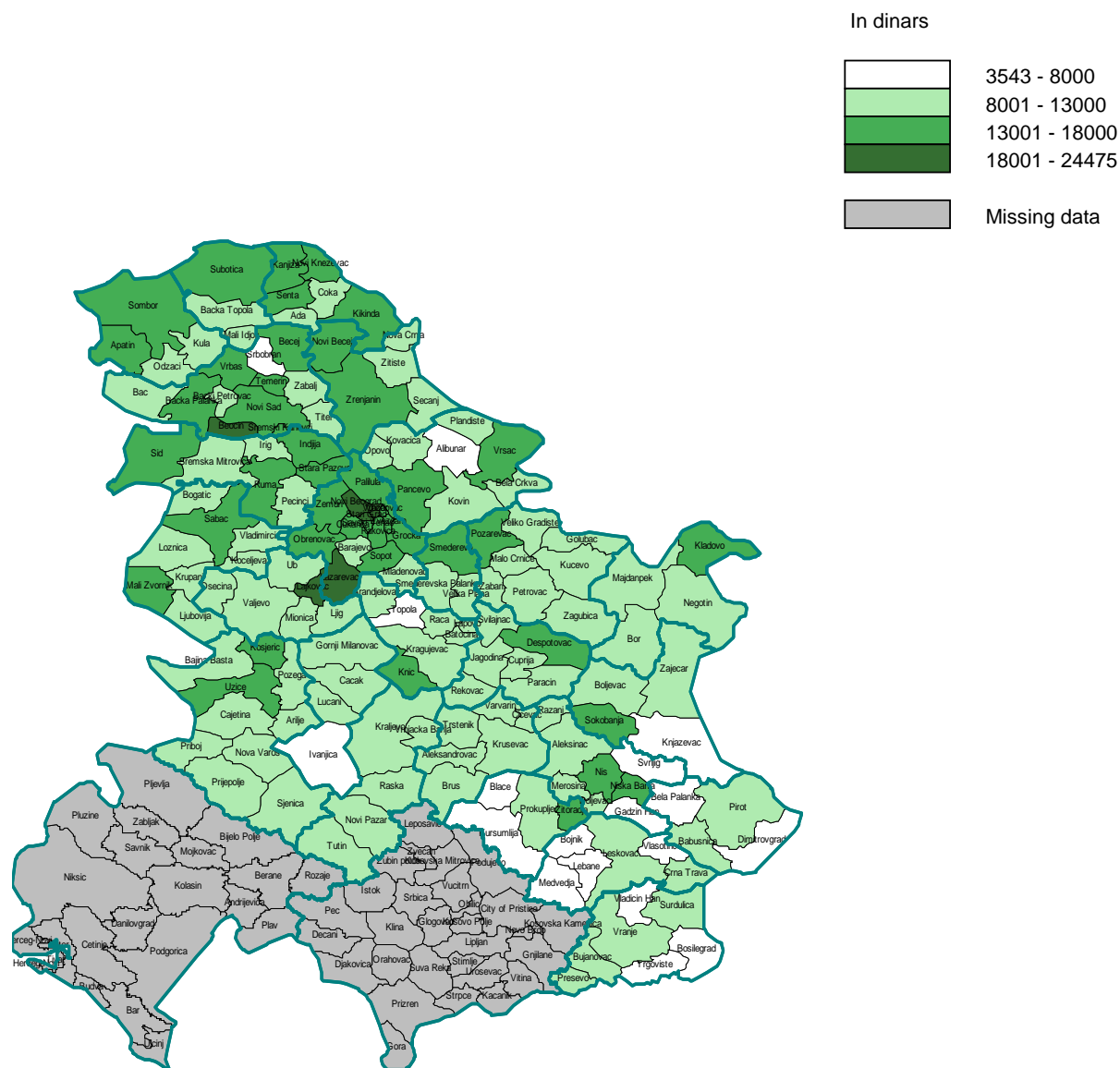
DevInfo has the option (without previously installed GIS – Geographic Information System) to present data on the maps. Up to 10 geographic levels are supported by the system. The lowest geographic level with available data in the *DevInfo* database is municipal level. In the next phase, the data for settlement level will be prepared and entered into database.

Data presented on the maps could be precisely set. Among others, *DevInfo* enables you to:

- choose color for each data range (up to ten data ranges)
- show more parameters on the map
- set chosen parameters in details
- transfer produced map directly into the PowerPoint presentation

The map on the next page shows average salaries in municipalities in Serbia for 2004. The district borders were highlighted.

Average salaries in Serbia in 2004



Source

RSO - Department of Labour Force (RAD1)

For further information please contact:

Dragana Djokovic-Papic
Republic Statistical Office,
 Head of the Department of Living Standard
 Phone: +381 11 2412-922, ext. 247
 E-mail: ddjokovic_papic@statserb.sr.gov.yu

Vladica Jankovic
UNICEF,
 DevInfo Monitoring Assistant
 Phone: +381 11 3602-125
 E-mail: vjankovic@unicef.org

Detailed table on indicators data in DevInfo database

Sector	Class	Indicator	NPA	MDG	Unit	Source	Years	Levels	Sub-population
Demography	Population by national or ethnic groups	Albanians			Number	RSO - Population Census	1991, 2002 1991, 2002 2002	RS, CS+V, Districts, Municipalities	Total, Male, Female, Mean age, Ageing index, 0-19, 20-39, 40-59, 60 and more, 80 and more, Unknown
Demography	Population by national or ethnic groups	Bosnians			Number	RSO - Population Census	2002 2002 2002 2002	RS, CS+V, Districts, Municipalities	Total, Male, Female, Mean age, Ageing index, 0-19, 20-39, 40-59, 60 and more, 80 and more, Unknown
Demography	Population by national or ethnic groups	Bulgarians			Number	RSO - Population Census	2002 2002 2002 2002	RS, CS+V, Districts, Municipalities	Total, Male, Female, Mean age, Ageing index, 0-19, 20-39, 40-59, 60 and more, 80 and more, Unknown
Demography	Population by national or ethnic groups	Montenegrins			Number	RSO - Population Census	1991, 2002 1991, 2002 2002	RS, CS+V, Districts, Municipalities	Total, Male, Female, Mean age, Ageing index, 0-19, 20-39, 40-59, 60 and more, 80 and more, Unknown
Demography	Population by national or ethnic groups	Croatians			Number	RSO - Population Census	1991, 2002 1991, 2002 2002	RS, CS+V, Districts, Municipalities	Total, Male, Female, Mean age, Ageing index, 0-19, 20-39, 40-59, 60 and more, 80 and more, Unknown
Demography	Population by national or ethnic groups	Hungarians			Number	RSO - Population Census	1991, 2002 1991, 2002 2002	RS, CS+V, Districts, Municipalities	Total, Male, Female, Mean age, Ageing index, 0-19, 20-39, 40-59, 60 and more, 80 and more, Unknown
Demography	Population by national or ethnic groups	Muslims			Number	RSO - Population Census	1991, 2002 1991, 2002 2002	RS, CS+V, Districts, Municipalities	Total, Male, Female, Mean age, Ageing index, 0-19, 20-39, 40-59, 60 and more, 80 and more, Unknown
Demography	Population by national or ethnic groups	Roma			Number	RSO - Population Census	1991, 2002 1991, 2002 2002	RS, CS+V, Districts, Municipalities	Total, Male, Female, Mean age, Ageing index, 0-19, 20-39, 40-59, 60 and more, 80 and more, Unknown
Demography	Population by national or ethnic groups	Rumanians			Number	RSO - Population Census	1991, 2002 1991, 2002 2002	RS, CS+V, Districts, Municipalities	Total, Male, Female, Mean age, Ageing index, 0-19, 20-39, 40-59, 60 and more, 80 and more, Unknown
Demography	Population by national or ethnic groups	Ruthenians			Number	RSO - Population Census	2002 2002 2002 2002	RS, CS+V, Districts, Municipalities	Total, Male, Female, Mean age, Ageing index, 0-19, 20-39, 40-59, 60 and more, 80 and more, Unknown
Demography	Population by national or ethnic groups	Slovaks			Number	RSO - Population Census	1991, 2002 1991, 2002 2002	RS, CS+V, Districts, Municipalities	Total, Male, Female, Mean age, Ageing index, 0-19, 20-39, 40-59, 60 and more, 80 and more, Unknown
Demography	Population by national or ethnic groups	Serbs			Number	RSO - Population Census	1991, 2002 1991, 2002 2002	RS, CS+V, Districts, Municipalities	Total, Male, Female, Mean age, Ageing index, 0-19, 20-39, 40-59, 60 and more, 80 and more, Unknown
Demography	Population	Children under 6 year-old (preschool)			Number	RSO - Population Census	1991, 2002 1991, 2002 1991, 2002	RS, CS+V, Districts, Municipalities	Total Male Female
Demography	Population	Children 15-18 year-old (secondary education)			Number	RSO - Population Census	1991, 2002 1991, 2002 1991, 2002	RS, CS+V, Districts, Municipalities	Total Male Female
Demography	Population	Children 15-27 year-old (youth)			Number	RSO - Population Census	1991, 2002 1991, 2002 1991, 2002	RS, CS+V, Districts, Municipalities	Total Male Female
Demography	Population	Children 19-24 year-old (high education)			Number	RSO - Population Census	1991, 2002 1991, 2002 1991, 2002	RS, CS+V, Districts, Municipalities	Total Male Female
Demography	Population	Children 7 - 14 year-old (primary education)			Number	RSO - Population Census	1991, 2002 1991, 2002 1991, 2002	RS, CS+V, Districts, Municipalities	Total Male Female
Demography	Population	Index of population growth between censuses			Index	RSO - Population Census	2002 2002 2002	RS, CS+V, Districts, Municipalities	Total, Urban, Rural

Sector	Class	Indicator	NPA	MDG	Unit	Source	Years	Levels	Sub-population
Demography	Population	Mid-year population (estimation)			Number	RSO - Vital statistics	1990-2002 1990-2002 1991-2002	RS, CS+V, BG	Total
Demography	Population	Population by national or ethnic groups			Number	RSO - Population Census	1991, 2002 1991, 2002 2002	RS, CS+V, BG	Total, Serbs, Montenegrins, Yugoslavs, Albanians, Bosnians, Bulgarians, Bunjevci, Valachians, Goranci, Hungarians, Macedonians, Muslims, Germans, Roma, Rumanians, Russians, Ruthenians, Slovaks, Slovenians, Ukrainians, Croatsians, Chechs Other, Non declared and undefined, Regional affiliation, Unknown, Male, Female 0-19, 20-39, 40-59, 60 and more, 80 and more
Demography	Population	Population by major contingents			Number	RSO - Population Census	1991, 2002 1991, 2002 2002	RS, CS+V, BG	Total, Under 7 years, 7-14 years, 15-27 years, Population over 60 years, Capable of working total, Capable of working male, Capable of working female, Female population aged 15-49 years, Population over 60 years - share of total (%), Capable of working population - share of total (%), Male, Female
Demography	Population	Population by age groups			Number	RSO - Population Census	1991, 2002 1991, 2002 2002	RS, CS+V, BG	Total, 00-04, 05-09, 10-14, 15-19, 20-24, 25-29, 30-34, 35-39, 40-44, 45-49, 50-54, 55-59, 60-64, 65-69, 70-74, 75-79, 80-84, 85-89, 90-94, 95 and over, Unknown, Male, Female
Demography	Population	Population by censuses			Number	RSO - Population Census	1981, 1991, 2002 1981, 1991, 2002 1981, 1991, 2002 1991, 2002, 1991, 2002	RS, CS+V, BG, Districts, Municipalities	Total, Male, Female
Demography	Population	Population aged 15 and over by educational attainment			Percent	RSO - Population Census	2002 2002 2002	RS, CS+V, BG	Without educational attainment, 1-7 classes of primary school, Primary education, Secondary education, High education, Higher education, Unknown, Without educational attainment - Male, 1-7 classes of primary school - Male, Primary education - Male, Secondary education - Male, High education - Male, Higher education - Male, Unknown - Male, Without educational attainment - Female, 1-7 classes of primary school - Female, Primary education - Female, Secondary education - Female, High education - Female, Higher education - Female, Unknown - Female
Demography	Population	Population aged 0 yrs			Number	RSO - Population Census	1991, 2002 1991, 2002 1991, 2002 1991, 2002	RS, CS+V, Districts, Municipalities	Total Male Female
Demography	Population	Population aged 1 yrs			Number	RSO - Population Census	1991, 2002 1991, 2002 1991, 2002 1991, 2002	RS, CS+V, Districts, Municipalities	Total Male Female
Demography	Population	Population aged 10 yrs			Number	RSO - Population Census	1991, 2002 1991, 2002 1991, 2002 1991, 2002	RS, CS+V, Districts, Municipalities	Total Male Female
Demography	Population	Population aged 11 yrs			Number	RSO - Population Census	1991, 2002 1991, 2002 1991, 2002 1991, 2002	RS, CS+V, Districts, Municipalities	Total Male Female
Demography	Population	Population aged 12 yrs			Number	RSO - Population Census	1991, 2002 1991, 2002 1991, 2002 1991, 2002	RS, CS+V, Districts, Municipalities	Total Male Female
Demography	Population	Population aged 13 yrs			Number	RSO - Population Census	1991, 2002 1991, 2002 1991, 2002 1991, 2002	RS, CS+V, Districts, Municipalities	Total Male Female
Demography	Population	Population aged 14 yrs			Number	RSO - Population Census	1991, 2002 1991, 2002 1991, 2002 1991, 2002	RS, CS+V, Districts, Municipalities	Total Male Female
Demography	Population	Population aged 15 yrs			Number	RSO - Population Census	1991, 2002 1991, 2002 1991, 2002 1991, 2002	RS, CS+V, Districts, Municipalities	Total Male Female
Demography	Population	Population aged 16 yrs			Number	RSO - Population Census	1991, 2002 1991, 2002 1991, 2002 1991, 2002	RS, CS+V, Districts, Municipalities	Total Male Female

Sector	Class	Indicator	NPA	MDG	Unit	Source	Years	Levels	Sub-population
Demography	Population	Population aged 17 yrs			Number	RSO - Population Census	1991, 2002 1991, 2002 1991, 2002 1991, 2002	RS, CS+V, Districts, Municipalities	Total Male Female
Demography	Population	Population aged 18 yrs			Number	RSO - Population Census	1991, 2002 1991, 2002 1991, 2002 1991, 2002	RS, CS+V, Districts, Municipalities	Total Male Female
Demography	Population	Population aged 19 yrs			Number	RSO - Population Census	1991, 2002 1991, 2002 1991, 2002 1991, 2002	RS, CS+V, Districts, Municipalities	Total Male Female
Demography	Population	Population aged 2 yrs			Number	RSO - Population Census	1991, 2002 1991, 2002 1991, 2002 1991, 2002	RS, CS+V, Districts, Municipalities	Total Male Female
Demography	Population	Population aged 20 yrs			Number	RSO - Population Census	1991, 2002 1991, 2002 1991, 2002 1991, 2002	RS, CS+V, Districts, Municipalities	Total Male Female
Demography	Population	Population aged 3 yrs			Number	RSO - Population Census	1991, 2002 1991, 2002 1991, 2002 1991, 2002	RS, CS+V, Districts, Municipalities	Total Male Female
Demography	Population	Population aged 4 yrs			Number	RSO - Population Census	1991, 2002 1991, 2002 1991, 2002 1991, 2002	RS, CS+V, Districts, Municipalities	Total Male Female
Demography	Population	Population aged 5 yrs			Number	RSO - Population Census	1991, 2002 1991, 2002 1991, 2002 1991, 2002	RS, CS+V, Districts, Municipalities	Total Male Female
Demography	Population	Population aged 6 yrs			Number	RSO - Population Census	1991, 2002 1991, 2002 1991, 2002 1991, 2002	RS, CS+V, Districts, Municipalities	Total Male Female
Demography	Population	Population aged 7 yrs			Number	RSO - Population Census	1991, 2002 1991, 2002 1991, 2002 1991, 2002	RS, CS+V, Districts, Municipalities	Total Male Female
Demography	Population	Population aged 8 yrs			Number	RSO - Population Census	1991, 2002 1991, 2002 1991, 2002 1991, 2002	RS, CS+V, Districts, Municipalities	Total Male Female
Demography	Population	Population aged 9 yrs			Number	RSO - Population Census	1991, 2002 1991, 2002 1991, 2002 1991, 2002	RS, CS+V, Districts, Municipalities	Total Male Female
Demography	Population	Population density			People per sq km	RSO - Population Census	1991, 2002 1991, 2002 1991, 2002 1991, 2002	RS, CS+V, BG Districts Municipalities	Total
Demography	Population by locality	Urban population			Number	RSO - Population Census	1991, 2002 1991, 2002 2002	RS, CS+V, Districts, Municipalities	Total Male Female
Demography	Population by locality	Rural population			Number	RSO - Population Census	1991, 2002 1991, 2002 2002	RS, CS+V, Districts, Municipalities	Total Male Female
Demography	Vital Statistics	Life expectancy at birth			Years	RSO - Vital statistics	2002 2000-2002 2002	RS, CS+V, BG	Total, Male, Female
Demography	Vital Statistics	Natural increase - number			Number	RSO - Vital statistics	1990-2002 1990-2002 1990-2002	RS, CS+V, BG	Total
Demography	Vital Statistics	Natural increase rate			Rate	RSO - Vital statistics	1990-2002 1990-2002 1990-2002	RS, CS+V, BG	Total
Demography	Vital Statistics	Age-specific fertility rate			Per 1000 women	RSO - Vital statistics	1990-2002 1990-2002 2002	RS, CS+V, BG	Total 15-19 yr

Sector	Class	Indicator	NPA	MDG	Unit	Source	Years	Levels	Sub-population
Demography	Vital Statistics	Total fertility rate			Number	RSO - Vital statistics	1990-2002 1990-2002 2002	RS, CS+V, BG	Total
Demography	Vital Statistics	Deaths - number			Number	RSO - Vital statistics	1990-2002 1990-2002 1990-2002	RS, CS+V, BG	Total Male Female
Demography	Vital Statistics	Deaths rate			Rate	RSO - Vital statistics	1990-2002 1990-2002 1990-2002	RS, CS+V, BG	Total Male Female
Demography	Vital Statistics	Livebirths - number			Number	RSO - Vital statistics	1990-2002 1990-2002 1990-2002	RS, CS+V, BG	Total Male Female
Demography	Vital Statistics	Livebirths rate			Rate	RSO - Vital statistics	1990-2002 1990-2002 1990-2002	RS, CS+V, BG	Total Male Female
Economy	Prices and exchange rate	Consumer price Index, annual average			Percent	RSO - Department of Prices	1990-1992, 1995-2004 1990-1992, 1995-2004 1992, 1995-2004 2000-2004	RS CS V BG	Total
Economy	Prices and exchange rate	Consumer price Index, end of period			Percent	RSO - Department of Prices	1990-1992, 1995-2004 1990-1992, 1995-2004 1992, 1995-2004 2000-2004	RS CS V BG	Total
Economy	Prices and exchange rate	Inflation (Indices of retail prices), annual average			Percent	RSO - Department of Prices	1990-1992, 1995-2004 1990-1992, 1995-2004 1992, 1995-2004 1990-1992, 1995-2004	RS CS V BG	Total
Economy	Prices and exchange rate	Inflation (Indices of retail prices), end of period			Percent	RSO - Department of Prices	1990-1992, 1995-2004 1990-1992, 1995-2004 1992, 1995-2004 1990-1992, 1995-2004	RS CS V BG	Total
Economy	Public Expenditure	Participation of consolidated public expenditure in GDP			Percent	Ministry of Finance	2001-2003	RS	Total
Economy	Public Expenditure	Participation of pensions in GDP			Percent	Ministry of Finance	2001-2003	RS	Total
Economy	Public Expenditure	Public expenditure on education as a percentage of GDP	X		Percent	Ministry of Finance	2001-2003	RS	Total
Economy	Public Expenditure	Public expenditure on social welfare as a percentage of GDP			Percent	Ministry of Finance	2001-2003	RS	Total
Economy	Public Expenditure	Public expenditure on healthcare as a percentage of GDP			Percent	Ministry of Finance	2001-2003	RS	Total
Economy	Public Expenditure	Fiscal deficit, participation in GDP			Percent	Ministry of Finance	2001-2003	RS	Total
Economy	Public Income	Level of consolidated public income in GDP			Percent	Ministry of Finance	2001-2003	RS	Total
Economy	Income	Poverty deficit			Percent	Ministry of Labour, Employment and Social Policy - LSMS	2002	RS	Total
Economy	Income	Gini inequality coefficient (according to expenditure)			Percent	Ministry of Labour, Employment and Social Policy - LSMS	2002	RS	Total
Economy	Income	Average level of income per consumer unit	X		Dinars	Ministry of Labour, Employment and Social Policy - LSMS	2002	RS	Total
Economy	Expenditure	Population with expenditure below the poverty line	X		Percent	Ministry of Labour, Employment and Social Policy - LSMS	2002	RS CS V BG	Total
Economy	Public Consumption	Households' expenditure on food as a share in total costs of households	X		Percent	Ministry of Labor, Employment and Social Policy - LSMS	2002	RS	Total
Economy	Public Consumption	Average level of expenditure per consumer unit	X		Dinars	Ministry of Labor, Employment and Social Policy - LSMS	2002	RS	Total
Economy	Public Consumption	25% share of the poorest in national expenditure			Percent	Ministry of Labor, Employment and Social Policy - LSMS	2002	RS	Total
Economy	Public Consumption	Monthly accommodation/housing costs as a share in total costs of households			Percent	Ministry of Labour, Employment and Social Policy - LSMS	2002	RS	Total
Economy	Production	GDP - estimation			In millions US\$	RSO - Department of National Accounts	2000-2003	RS	Total
Economy	Production	GDP per capita - estimation			US\$	RSO - Department of National Accounts	2000-2003	RS	Total
Economy	Production	National income per capita in national currency			Dinars	RSO - Department of National Accounts	2000-2002 2000-2002 2000, 2001	RS CS+V Municipalities	Total

Sector	Class	Indicator	NPA	MDG	Unit	Source	Years	Levels	Sub-population
Economy	Production	National income in national currency			In millions dinars	RSO - Department of National Accounts	2001	RS CS+V Districts Municipalities	Total
Economy	Production	Participation of investments in GDP			Percent	RSO - Department of National Accounts	2000-2002	RS	Total
Economy	Production	Participation of export in GDP			Percent	RSO - Department of National Accounts and Department of External Trade	2000-2002	RS	Total
Economy	External Trade	Value of exports			In millions US\$	RSO - Department of External Trade	1990,1991,1996-2004 1990,1991,1996-2004	RS CS+V	Total
Economy	External Trade	Value of imports			In millions US\$	RSO - Department of External Trade	1990,1991,1996-2004 1990,1991,1996-2004	RS CS+V	Total
Economy	Employment	Unemployed according to ILO definition comparing to active population			Percent	RSO - Department of Labor Force (LFS)	1995-2003 1995-2003	RS CS+V	Total
Economy	Employment	Average salaries level in primary education comparing to total republic average			Percent	RSO - Department of Labor Force (RAD1 P)	1990-2004 1990-2004 1990-1995, 2000-2004	RS CS+V BG	Total
Economy	Employment	Average salaries level in secondary education comparing to total republic average			Percent	RSO - Department of Labor Force (RAD1 P)	1990-2004 1990-2004 1990-1995,2000-2004	RS CS+V BG	Total
Economy	Employment	Average salaries			Dinars	RSO - Department of Labor Force (RAD1)	1990-2004 1990-2004 2000-2004 2000-2004	RS, CS+V, Districts, Municipalities	Total
Economy	Employment	Average salaries of teachers in primary education			Dinars	Ministry of Education and Sport - Department for monitoring teachers' education	2001-2003	RS	Total
Economy	Employment	Average salaries of teachers in secondary education			Dinars	Ministry of Education and Sport - Department for monitoring teachers' education	2001-2003	RS	Total
Economy	Employment	Employees			Number	RSO - Department of Labor Force (RAD1 P)	1990-2003 1990-2003 1990-2003 2000-2003 2000-2003	RS CS+V BG Districts, Municipalities	Total
Economy	Employment	Employees comparing to population number			Percent	RSO - Department of Labor Force (RAD1 P)	1991-2002 1991-2002 1991-2002	RS CS+V BG	Total
Women	Empowerment	Average salaries of women comparing to average salaries of men			Ratio	RSO - Department of Labor Force (RAD1 P)	2003, 2004 2003, 2004 2003, 2004	RS CS+V BG	Total
Women	Empowerment	Proportion of women in total number of employees			Percent	RSO - Department of Labor Force (RAD1 P)	1990-2003 1990-2003 1990-2003 2000-2003 2000-2003	RS CS+V BG Districts, Municipalities	Total
Information	Mass Media	Daily newspapers			Number	RSO - Department of Education	1990-2001 1990-2001	RS CS+V	Total
Information	Mass Media	Radio sets			Number	RSO - HBS	2000-2002 2000-2002	RS CS+V	Total
Information	Mass Media	Telephone subscribers			Number	Telekom Srbije and RSO - Department of Transport	2001 2001 2001 2001	RS CS+V Districts, Municipalities	Total
Nutrition	Anaemia	Prevalence of anaemia			Percent	UNICEF - survey of children and mothers (MICS)	2000 2000 2000 2000	SCG RS CS+V BG	Female 15-49 yr, Urban, Rural, 15-19, 20-24, 25-29, 30-34, 35-39, 40-44, 45-49, None/primary education, Secondary education, Higher/high education
Nutrition	Anaemia	Prevalence of anaemia in children	X		Percent	UNICEF - survey of children and mothers (MICS)	2000 2000 2000 2001	SCG, RS CS+V BG	Total 6-59 months, Urban, Rural, Male, Female, 6-11 months, 12-23 months, 24-35 months, 36-47 months, 48-59 months, None/primary education, Secondary education, Higher/high education
Nutrition	Breastfeeding	Exclusive breastfeeding rate	X		Percent	UNICEF - survey of children and mothers (MICS)	1996, 2000	SCG RS CS+V BG	Male, Female, Urban, Rural, Total
Nutrition	Breastfeeding	Timely complementary feeding rate			Percent	UNICEF - survey of children and mothers (MICS)	2000	SCG RS CS+V	Total 6-9 months, Urban, Rural, Male, Female, None/primary education, Secondary education, Higher/high education
Nutrition	Breastfeeding	Continued breastfeeding rate			Percent	UNICEF - survey of children and mothers (MICS)	2000	SCG RS CS+V	Total 12-15 months, Urban, Rural, Male, Female, None/primary education, Secondary education, Higher/high education

Sector	Class	Indicator	NPA	MDG	Unit	Source	Years	Levels	Sub-population
Nutrition	Iodine Deficiency Disorders	Proportion of households consuming iodised salt			Percent	UNICEF - survey of children and mothers (MICS)	2000 2000 2000 2000	SCG RS CS+V BG	Total, Urban, Rural
Nutrition	Malnutrition	Prevalence of overweight (moderate and severe)	X		Percent	UNICEF - survey of children and mothers (MICS)	1996, 2000	SCG RS CS+V BG	Total < 5 yr, Urban, Rural, Male, Female, until 6 months, until 1 year, 6-11 months, 12-23 months, 24-35 months, 36-47 months, 48-59 months, None/primary education, Secondary education, Higher/high education
Nutrition	Malnutrition	Prevalence of underweight (severe) - weight for height			Percent	UNICEF - survey of children and mothers (MICS)	1996, 2000	SCG RS CS+V BG	Total < 5 yr, Urban, Rural, Male, Female, until 6 months, until 1 year, 6-11 months, 12-23 months, 24-35 months, 36-47 months, 48-59 months, None/primary education, Secondary education, Higher/high education
Nutrition	Malnutrition	Prevalence of underweight (moderate and severe)	X	X	Percent	UNICEF - survey of children and mothers (MICS)	1996, 2000	SCG RS CS+V BG	Total < 5 yr, Urban, Rural, Male, Female, until 6 months, until 1 year, 6-11 months, 12-23 months, 24-35 months, 36-47 months, 48-59 months, None/primary education, Secondary education, Higher/high education
Nutrition	Malnutrition	Proportion of infants with low birth weight	X		Percent	RSO - Vital statistics	1995-2002 1995-2002	RS CS+V	Total
Education	Access to Education	Preschool institutions	X		Number	RSO - Department of Education	1990-2003 1990-2003 2000-2003 2000-2003	RS, CS+V, Districts, Municipalities	Total
Education	Access to Education	Primary schools			Number	RSO - Department of Education	1990-2003 1990-2003 1990-2003 2000-2003 2000-2003	RS CS+V BG Districts, Municipalities	Total
Education	Access to Education	Secondary schools			Number	RSO - Department of Education	1990-2003 1990-2003 1990-2003 2000-2003 2000-2003	RS CS+V BG Districts, Municipalities	Total
Education	Access to Education	Percent of children by class enrolled in secondary education			Percent	RSO - Department of Education	1990-2003, 1990-2003, 1990-2003	RS CS+V BG	Total
Education	Educational Attainment	Population without completing of 4 th grade of primary school (aged 15 and over)			Percent	RSO - Population Census	1991, 2002 1991, 2002 1991, 2002	RS CS+V BG	Total, Female
Education	Educational Attainment	Roma population without completing of primary school (aged 15 and over)			Percent	RSO - Population Census	1991, 2002 1991, 2002 1991, 2002	RS CS+V BG	Total
Education	Educational Attainment	Population aged 15 and over without educational attainment			Percent	RSO - Population Census	1991, 2002 1991, 2002 1991, 2002	RS CS+V BG	Total
Education	Gender Equity	Proportion of girls in primary education			Percent	RSO - Department of Education	1990-2003, 1990-2003, 1990-2003	RS, CS+V, BG	Total
Education	Gender Equity	Proportion of girls in secondary education			Percent	RSO - Department of Education	1990-2003, 1990-2003, 1990-2003	RS, CS+V, BG	Total
Education	Gender Equity	Proportion of girls in high education			Percent	RSO - Department of Education	1990-2003, 1990-2003, 1990-2003	RS, CS+V, BG	Total
Education	Gender Equity	Women aged 15 and over without educational attainment			Percent	RSO - Population Census	1991, 2002 1991, 2002 1991, 2002	RS CS+V BG	Female
Education	Gender Equity	Ratio of literate women to men of 15-24 year-olds		X	Ratio	RSO - Population Census	1991, 2002 1991, 2002 1991, 2002	RS CS+V BG	Total 15-24 yr
Education	Literacy	Illiterate women per 100 women (population aged 10 and over)			Percent	RSO - Population Census	1991, 2002 1991, 2002 1991, 2002	RS CS+V BG	Total
Education	Literacy	Proportion of women in total number of illiterate population			Percent	RSO - Population Census	1991, 2002 1991, 2002 1991, 2002	RS CS+V BG	Total
Education	Preschool Education	Children enrolled in preschool education	X		Percent	RSO - Department of Education	1990-2003 1990-2003 1990-2003	RS CS+V BG	Total 3-7 yr
Education	Preschool Education	Children attending organized early childhood education programs			Percent	UNICEF - survey of children and mothers (MICS)	2000	SCG RS CS+V BG	Total 36-59 months, Urban, Rural, Male, Female, 36-47 months, 48-59 months, None/primary education, Secondary education, Higher/high education

Sector	Class	Indicator	NPA	MDG	Unit	Source	Years	Levels	Sub-population
Education	Preschool Education	Preschool education groups	X		Number	RSO - Department of Education	1990-2003 1990-2003 1990-2003	RS CS+V BG	Total
Education	Primary Education	Proportion of pupils starting grade 1 who reach grade 5		X	Percent	RSO - Department of Education	2000-2003 2000-2003 2000-2003	RS CS+V BG	Total, Male, Female
Education	Primary Education	Children enrolled in primary education			Number	RSO - Department of Education	1990-2003 1990-2003 1990-2003 2000-2003 2000-2003	RS CS+V BG Districts, Municipalities	Total, Male, Female
Education	Primary Education	Net enrolment ratio in primary education	X	X	Percent	RSO - Department of Education	2000-2003 2000-2003 2000-2003	RS CS+V BG	Total, Male, Female
Education	Primary Education	Primary completion rate			Rate	RSO - Department of Education	1994-2003 1994-2003 2000-2003	RS CS+V BG	Total, Male, Female
Education	Primary Education	Settlements with elementary school			Percent	RSO - Department of Education	2000, 2002 2000, 2002 2000, 2002 2000, 2002	RS CS+V BG Municipalities	Total
Education	Primary Education	Teachers trained for new system of primary education			Number	Ministry of Education and Sport - Department for monitoring teachers' education	2003	RS	Total
Education	Primary Education	Pupil per teacher in primary education			Number	RSO - Department of Education	1990-2003 1990-2003 1990-2003	RS CS+V BG	Total
Education	Primary Education	Children with disabilities in primary education			Number	RSO - Department of Education	1990-2003, 1990-2003, 1990-2003	RS CS+V BG	Total, Male, Female
Education	Secondary Education	Secondary completion rate	X		Percent	RSO - Department of Education	1990-2003, 1990-2003, 1990-2003	RS CS+V BG	Total
Education	Secondary Education	Children enrolled in secondary education			Number	RSO - Department of Education	1990-2003 1990-2003 1990-2003 2000-2003 2000-2003	RS CS+V BG Districts, Municipalities	Total, Male, Female
Education	Secondary Education	Net enrollment ratio in secondary education	X		Percent	RSO - Department of Education	1990-2003, 1990-2003, 1990-2003	RS CS+V BG	Total, Female
Education	Secondary Education	Settlements with secondary schools			Percent	RSO - Department of Education	2002 2002 2002	RS CS+V Municipalities	Total
Education	Secondary Education	Teachers trained for new system of secondary education			Number	Ministry of Education and Sport - Department for monitoring teachers' education	2003	RS	Total
Education	Secondary Education	Pupil per teacher in secondary education			Number	RSO - Department of Education	1990-2003, 1990-2003, 1990-2003	RS CS+V BG	Total
Environment	Environmental Resources	Land area covered by forest			ha	RSO - Department of Forestry	2000-2003 2000-2003 2002-2003 2002-2003	RS, CS+V, Districts, Municipalities	Total
Environment	Environmental Resources	Proportion of land area covered by forest		X	Percent	RSO - Department of Forestry	2000-2003 2000-2003 2002-2003 2002-2003	RS, CS+V, Districts, Municipalities	Total
Environment	Sanitation	Households with public service of garbage disposal			Percent	UNICEF - survey of children and mothers (MICS)	1996, 2000	SCG RS CS+V BG	Total, Urban, Rural
Environment	Sanitation	Households disposing garbage at a public dump			Percent	UNICEF - survey of children and mothers (MICS)	1996, 2000	SCG RS CS+V BG	Total, Urban, Rural
Environment	Sanitation	Households burning or disposing garbage near the house			Percent	UNICEF - survey of children and mothers (MICS)	1996, 2000	SCG RS CS+V BG	Total, Urban, Rural

Sector	Class	Indicator	NPA	MDG	Unit	Source	Years	Levels	Sub-population
Environment	Sanitation	Population using improved or traditional pit latrine for excreta disposal			Percent	UNICEF - survey of children and mothers (MICS)	1996, 2000	SCG RS CS+V BG	Total, Urban, Rural
Environment	Sanitation	Population using sewage system for excreta disposal			Percent	UNICEF - survey of children and mothers (MICS)	1996, 2000	SCG RS CS+V BG	Total, Urban, Rural
Environment	Sanitation	Population using septic tank for excreta disposal			Percent	UNICEF - survey of children and mothers (MICS)	1996, 2000	SCG RS CS+V BG	Total, Urban, Rural
Environment	Sanitation	Households disposing garbage at an illegal dump			Percent	UNICEF - survey of children and mothers (MICS)	1996, 2000	SCG RS CS+V BG	Total, Urban, Rural
Environment	Sanitation	Proportion of population with access to improved sanitation		X	Percent	UNICEF - survey of children and mothers (MICS)	1996, 2000	SCG RS CS+V BG	Total, Urban, Rural
Environment	Water	Proportion of population with sustainable access to an improved water source		X	Percent	UNICEF - survey of children and mothers (MICS)	2000	SCG RS CS+V BG	Total, Urban, Rural
Environment	Water	Population using tube well water			Percent	UNICEF - survey of children and mothers (MICS)	1996, 2000	SCG RS CS+V BG	Total, Urban, Rural
Environment	Water	Population using piped water			Percent	UNICEF - survey of children and mothers (MICS)	1996, 2000	SCG RS CS+V BG	Total, Urban, Rural
Environment	Water	Plumbing with adequate quality of water (physical-chemical)			Percent	Serbian Healthcare Institute	1993-2003 1994-2003 1994-2003	RS, CS+V, BG	Total
Environment	Housing	Price per m2 of apartment (contractual price of newly-built apartments, in dinars)			Dinars	RSO - Department of Construction	2000-2003 2000-2003 2000-2003	RS CS+V BG	Total
Environment	Housing	Built apartments			Per 1000 persons	RSO - Department of Construction	2000-2002 2000-2002 2000-2002 2000-2002	RS, CS+V, Districts, Municipalities	Total
Environment	Housing	Floor space per capita			m2	RSO - Population Census	2002 2002 2002	RS CS+V BG	Total
Environment	Housing	Settlements			Number	RSO - Department of Territorial Organisation	2002 2002 2002 2002	RS, CS+V, Districts, Municipalities	Total
Environment	Housing	Area			KM2	Republic Geodetic Office	2002 2002 2002 2002	RS, CS+V, Districts, Municipalities	Total
Social Care	Children with disabilities	Children with disabilities continuing their education after completing primary school	X		Percent	RSO - Department of Education	2000-2002 2000-2002 2000-2002	RS CS+V BG	
Social Care	Children with disabilities	Children with disabilities using FMS	X		Number	Ministry of Labor, Employment and Social Policy - Recipients of Social Assistance Data Base	2002 2002	RS CS+V	Total
Social Care	Children with disabilities	Children with disabilities receiving social assistance	X		Number	Ministry of Labor, Employment and Social Policy - Recipients of Social Assistance Data Base	2000-2002 2000-2002 2000-2002	RS CS+V BG	Ukupno
Social Care	Children with disabilities	Children with disabilities involved in education	X		Number	RSO - Department of Education	2000-2002 2000-2002 2000-2002	RS CS+V BG	Total
Social Care	Children with disabilities	Children in stationary special institutions	X		Number	RSO - Department of Education	2000-2002 2000-2002 2000-2002	RS CS+V BG	Total
Social Care	Access to Social Services	Families receiving MOP	X		Number	Ministry of Labor, Employment and Social Policy - Recipients of Social Assistance Data Base	2000-2002 2000-2002 2000-2002 2000-2002	RS, CS+V, Districts, Municipalities	Total

Sector	Class	Indicator	NPA	MDG	Unit	Source	Years	Levels	Sub-population
Social Care	Access to Social Services	Households in which at least one child receives child allowance	X		Number	Ministry of Labor, Employment and Social Policy - Recipients of Social Assistance Data Base	2002 2000-2002 2002 2002	RS, CS+V, Districts, Municipalities	Total
Social Care	Child Protection	Adopted children without parental care	X		Number	Ministry of Labor, Employment and Social Policy - Centers for Social Work	2001-2003	RS	Total, Male, Female
Social Care	Child Protection	Children without parental care accommodated in households			Number	Ministry of Labor, Employment and Social Policy - Centers for Social Work	2001-2003	RS	Total
Social Care	Child Protection	Children on guardianship care			Number	Ministry of Labor, Employment and Social Policy - Centers for Social Work	2001-2003	RS	Total
Social Care	Child Protection	Children without parental care abandoned by parents			Number	Ministry of Labor, Employment and Social Policy - Centers for Social Work	2001-2003	RS	Total
Social Care	Child Protection	Children without parental care taken away from their parents			Number	Ministry of Labor, Employment and Social Policy - Centers for Social Work	1998-2003	RS	Total
Social Care	Child Protection	Children without parental care whose parents are deprived of parental rights			Number	Ministry of Labor, Employment and Social Policy - Centers for Social Work	1998-2003	RS	Total
Social Care	Child Protection	Children without parental care whose parents are unknown			Number	Ministry of Labor, Employment and Social Policy - Centers for Social Work	2001-2003	RS	Total
Social Care	Child Protection	Children without parental care whose parents are prevented from carrying out their parental responsibilities			Number	Ministry of Labor, Employment and Social Policy - Centers for Social Work	2001-2003	RS	Total
Social Care	Child Protection	Children without parental care whose parents deceased			Number	Ministry of Labor, Employment and Social Policy - Centers for Social Work	2001-2003	RS	Total
Social Care	Child Protection	Children without parental care accommodated in institutions	X		Number	RSO - Department of Education	2000-2002 2000-2002 2000-2002	RS CS+V BG	Total
Social Care	Child Protection	Child allowance beneficiaries	X		Number	Ministry of Labor, Employment and Social Policy - Recipients of Social Assistance Data Base	2000-2002 2002	RS, CS+V, Districts, Municipalities	Total
Social Care	Child Abuse and Neglect	Abused and neglected children registered by the centres for social work	X		Number	Ministry of Labor, Employment and Social Policy - Centers for Social Work	2001, 2002	RS	Total, Physically, Sexually, Emotionally, Neglected
Social Care	Child Abuse and Neglect	Criminal charges for child abuse and neglect			Number	Ministry of Labor, Employment and Social Policy - Centers for Social Work	2001, 2002	RS	Total
Health	Immunisation	Proportion of 1 year-old children immunised against diphtheria, tetanus and pertussis	X		Percent	Serbian Healthcare Institute - Epidemiology	1991-2003 1990-2003 1990-2003	RS, CS+V, BG	Total
Health	Immunisation	Proportion of 1 year-old children immunised against measles	X	X	Percent	Serbian Healthcare Institute - Epidemiology	1991, 1993-2003 1990-2003 1990-2003	RS, CS+V, BG	Total 1 yr
Health	Safe Motherhood	Maternity wards certified as "Baby Friendly Hospitals"	X		Number	Serbian Healthcare Institute - Health institutions	1996-2004	RS, CS+V, BG	Total
Health	Safe Motherhood	Proportion of births attended by skilled health personnel		X	Percent	RSO - Vital statistics	1990-2002 1990-2002 1990-2002	RS CS+V BG	Total
Health	Safe Motherhood	Youth pregnancies (girls aged 15 -19 years)	X		Rate	Serbian Healthcare Institute - Health institutions	1999-2002	RS, CS+V, Districts	Total
Health	Safe Motherhood	Youth pregnancy terminations among girls (girls aged 15-19 years)	X		Rate	Serbian Healthcare Institute - Health institutions	1995-2002 1995-2002 1995-2002	RS, CS+V, Districts	Total
Health	Safe Motherhood	Women aged 15 - 49 who regularly visit gynaecologist			Percent	Serbian Healthcare Institute - Survey on Population Health Status	2000 2000 2000	RS, CS+V, BG	Total
Health	Safe Motherhood	Condom use rate of the contraceptive prevalence rate			Percent	UNICEF - survey of children and mothers (MICS)	2000 2000 2000	RS, CS+V, BG	Female 15-49 yr, Urban, Rural, 15-19, 20-24, 25-49, None/primary education, Secondary education, Higher/high education
Health	Safe Motherhood	Population that uses condoms regularly	X		Percent	Serbian Healthcare Institute - Survey on Population Health Status	2000 2000 2000	RS, CS+V, BG	Total
Health	Safe Motherhood	Contraceptive prevalence rate		X	Percent	UNICEF - survey of children and mothers (MICS)	2000	SCG, RS, CS+V, BG	Female 15-49 yr, Urban, Rural, 15-19, 20-24, 25-49, None/primary education, Secondary education, Higher/high education

Sector	Class	Indicator	NPA	MDG	Unit	Source	Years	Levels	Sub-population
Health	Mortality	Accidents, poisonings and violence mortality rate	X		Percent	RSO - Vital statistics	1990-2002 1990-2002	RS CS+V	Total < 18 yr
Health	Mortality	Death cases caused by measles			Number	RSO - Vital statistics	1990-2002 1990-2002	RS CS+V	Total < 5 yr
Health	Mortality	Death cases caused by ARI (acute respiratory infections)	X		Number	RSO - Vital statistics	1990-2002 1990-2002	RS CS+V	Total < 5 yr
Health	Mortality	Death cases caused by diarrhoea	X		Number	RSO - Vital statistics	1990-2002 1990-2002	RS CS+V	Total < 5 yr
Health	Child Survival	Prenatal mortality rate	X		Rate	RSO - Vital statistics	1990-2002 1990-2002	RS CS+V	Total
Health	Child Survival	Under-five mortality rate	X	X	Deaths per 1000 live births	RSO - Vital statistics	1990-2002 1990-2002	RS CS+V	Total Male Female
Health	Child Survival	Infant mortality rate	X	X	Deaths per 1000 live births	RSO - Vital statistics	1990-2002 1990-2002	RS CS+V	Total Male Female
Health	Maternal Survival	Maternal mortality ratio	X	X	Deaths per 100,000 live births	RSO - Vital statistics	1990-2002 1990-2002	RS CS+V	Total
Health	Morbidity	ARI (acute respiratory infections) cases among children aged 0 to 59 months in two weeks before survey having adequate hospital treatment			Percent	UNICEF - survey of children and mothers (MICS)	2000	SCG RS CS+V BG	Total, Urban, Rural, Male, Female, until 6 months, 6-11 months, 12-23 months, 24-35 months, 36-47 months, 48-59 months, None/primary education, Secondary education, Higher/high education
Health	Morbidity	Diarrhoea cases among children aged 0 to 59 months in two weeks before survey who received ORT (oral rehydration therapy) or recommended home fluids			Percent	UNICEF - survey of children and mothers (MICS)	1996, 2000	SCG RS CS+V BG	Total, Urban, Rural, Male, Female, until 6 months, 6-11 months, 12-23 months, 24-35 months, 36-47 months, 48-59 months, None/primary education, Secondary education, Higher/high education
Health	Morbidity	Diarrhoea cases among children aged 0 to 59 months in two weeks before survey taking more fluids and eating improved food			Percent	UNICEF - survey of children and mothers (MICS)	1996, 2000	SCG RS CS+V BG	Total, Urban, Rural, Male, Female, until 6 months, 6-11 months, 12-23 months, 24-35 months, 36-47 months, 48-59 months, None/primary education, Secondary education, Higher/high education
Health	Morbidity	Diarrhoea - annual number of reported cases per child aged 6 years (estimation)			Per capita	UNICEF - survey of children and mothers (MICS)	1996, 2000	SCG RS CS+V BG	Total, Urban, Rural, Male, Female, until 6 months, 6-11 months, 12-23 months, 24-35 months, 36-47 months, 48-59 months, None/primary education, Secondary education, Higher/high education
Health	Morbidity	Measles - annual number of reported cases in children under 6 years			Number	Serbian Healthcare Institute - Statistics of diseases	1996-2003 1996-2003	RS, CS+V	Total
Health	Morbidity	Neonatal tetanus - annual number of reported cases	X		Number	Serbian Healthcare Institute - Statistics of diseases	1990-2003 1990-2003 1990-2003	RS, CS+V, BG	Total
Health	Morbidity	Diarrhoea morbidity - children under 5	X		Percent	UNICEF - survey of children and mothers (MICS)	1996, 2000	SCG RS CS+V BG	Total, Urban, Rural, Male, Female, until 6 months, 6-11 months, 12-23 months, 24-35 months, 36-47 months, 48-59 months, None/primary education, Secondary education, Higher/high education
Health	Morbidity	Respiratory infections morbidity - children under 5	X		Percent	UNICEF - survey of children and mothers (MICS)	2000	SCG RS CS+V BG	Total, Urban, Rural, Male, Female, until 6 months, 6-11 months, 12-23 months, 24-35 months, 36-47 months, 48-59 months, None/primary education, Secondary education, Higher/high education
Health	Morbidity	Poliomyelitis - annual number of reported cases	X		Number	Serbian Healthcare Institute - Statistics of diseases	1990-2003 1990-2003 1990-2003	RS, CS+V, BG	Total
Health	Morbidity	Sexual transmitted infections of adolescents (aged 15 - 19)	X		Rate	Serbian Healthcare Institute	1999-2002 1999, 2000, 2002	RS, CS+V	Total
Health	Morbidity	External causes of morbidity - children under 19	X		Percent	Serbian Healthcare Institute - Health institutions	1997-2003	RS CS+V Districts	Total
Health	Tuberculosis	Prevalence of tuberculosis		X	Per 100,000 population	Serbian Healthcare Institute - Statistics of diseases	1995-2002 1995-2002 1995-2002	RS, CS+V, BG	Total
Health	Tuberculosis	Death rate associated with tuberculosis		X	Per 100,000 population	RSO - Vital statistics	1990-2002 1990-2002	RS CS+V	Total
Health	HIV/AIDS	HIV infected registered persons			Number	Serbian Healthcare Institute - Statistics of diseases	1985-2003 1985-2003 1985-2003	RS CS+V BG	Total
Health	HIV/AIDS	Death cases caused by AIDS			Number	Serbian Healthcare Institute - Statistics of diseases	1985-2003 1985-2003 1985-2003	RS CS+V BG	Total

Sector	Class	Indicator	NPA	MDG	Unit	Source	Years	Levels	Sub-population
Health	HIV/AIDS	Knowledge of HIV/AIDS			Percent	UNICEF - survey of children and mothers (MICS)	2000	SCG, RS, CS+V, BG	Total, Urban, Rural, 15-19, 20-24, 25-29, 30-34, 35-39, 40-44, 45-49, None/primary education, Secondary education, Higher/high education
Health	HIV/AIDS	Women who have been tested for HIV			Percent	UNICEF - survey of children and mothers (MICS)	2000	SCG, RS, CS+V, BG	Female 15-49 yr, Urban, Rural, 15-19, 20-24, 25-29, 30-34, 35-39, 40-44, 45-49, None/primary education, Secondary education, Higher/high education
Health	HIV/AIDS	Women who know where to be tested for HIV			Percent	UNICEF - survey of children and mothers (MICS)	2000	SCG, RS, CS+V, BG	Female 15-49 yr, Urban, Rural, 15-19, 20-24, 25-29, 30-34, 35-39, 40-44, 45-49, None/primary education, Secondary education, Higher/high education
Health	HIV/AIDS	Knowledge of mother-to-child transmission of HIV			Percent	UNICEF - survey of children and mothers (MICS)	2000	SCG, RS, CS+V, BG	Female 15-49 yr, Urban, Rural, 15-19, 20-24, 25-29, 30-34, 35-39, 40-44, 45-49, None/primary education, Secondary education, Higher/high education
Health	Substance Abuse	Children smoking	X		Percent	Serbian Healthcare Institute - Survey on Population Health Status	2000 2000 2000	RS, CS+V, BG	Total
Health	Substance Abuse	Children using alcohol	X		Percent	Serbian Healthcare Institute - Survey on Population Health Status	2000 2000 2000	RS, CS+V, BG	Total
Health	Substance Abuse	Children using drugs	X		Percent	Serbian Healthcare Institute - Survey on Population Health Status	2000 2000 2000	RS, CS+V, BG	Total
Health	Health Service	Beneficiaries' satisfaction with services provided by healthcare workers	X		Rate	Serbian Healthcare Institute - Survey on Population Health Status	2000	RS, CS+V, BG	Total
Health	Health Care	Hospital beds			Per 1000 population	Serbian Healthcare Institute - Health institutions	1999-2002 1999-2002 1999-2002	RS, CS+V, BG	Total
Health	Health Care	Primary health protection of children rate	X		Rate	Serbian Healthcare Institute - Health institutions	1997-2003	RS, CS+V, Districts	Total
Health	Health Care	Hospitalised children rate	X		Rate	Serbian Healthcare Institute - Health institutions	1996, 2000	RS, CS+V, Districts	Total
Health	Health Care	General practitioners			Per 1000 persons	Serbian Healthcare Institute - Health institutions	1999-2002 1999-2002 1999-2002 1999-2002	RS, CS+V, BG, Municipalities	Total

Legend (level):
RS - Republic of Serbia, SCG - Serbia and Montenegro
CS - Central Serbia
V - Vojvodina
BG - City of Belgrade

Legend (Goals):
NPA (National Plan of Action for Children)
MDG (Millennium Development Goals)