

Natural changes of population 1961 – 2020

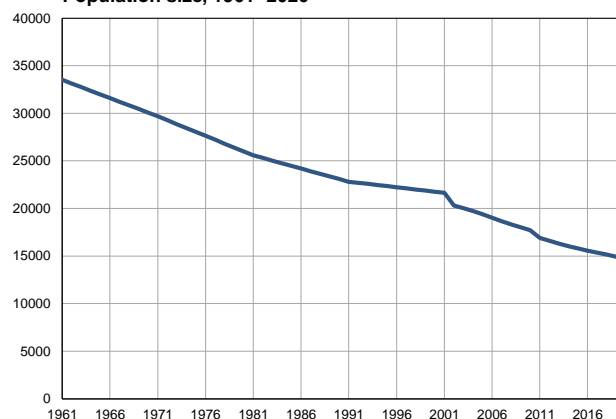
Profile
July 2021

Žitište

	1961	2020
Population size	33514	14693
Livebirths, Number	475	128
Deaths, Number	320	328
Natural increase, Number	155	-200
Infants deaths, Number	39	1
Livebirths, per 1,000 population	14	9
Deaths, per 1,000 population	10	22
Natural increase, per 1,000 population	5	-14
Infants deaths, per 1,000 livebirths	82	8

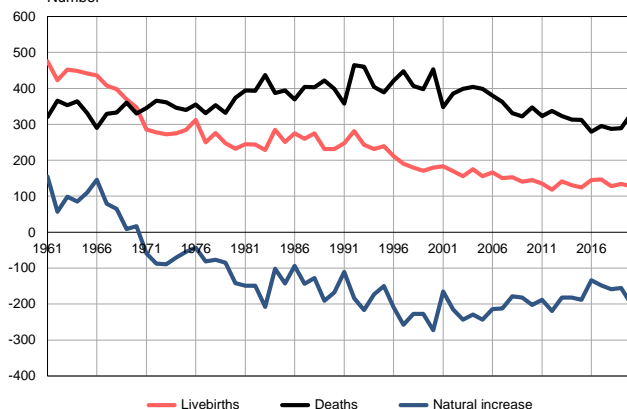
Source: Vital Statistics, SORS

Population size, 1961–2020



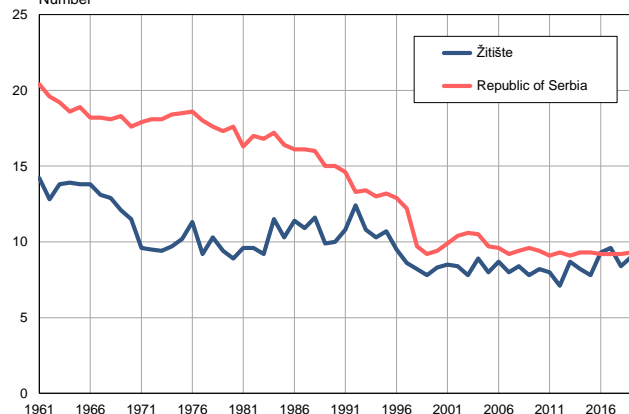
Source: Vital Statistics, SORS

Livebirths, deaths and natural increase, 1961–2020
Number



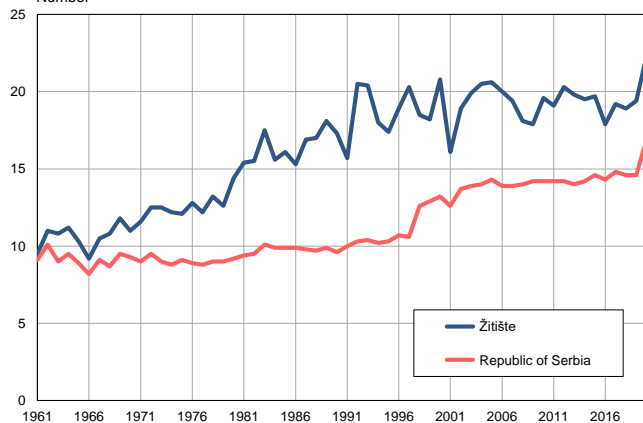
Source: Vital Statistics, SORS

Livebirths per 1,000 population, 1961–2020
Number



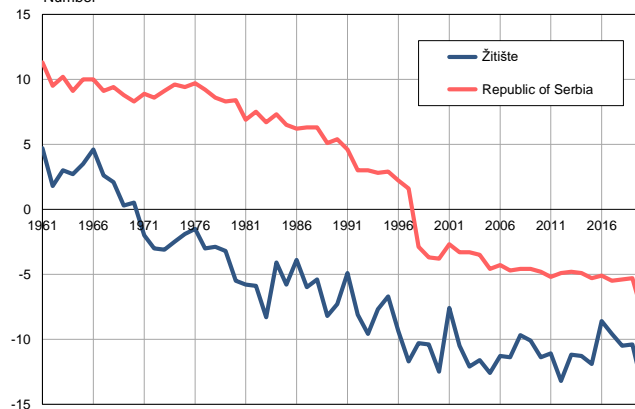
Source: Vital Statistics, SORS

Deaths per 1,000 population, 1961–2020
Number



Source: Vital Statistics, SORS

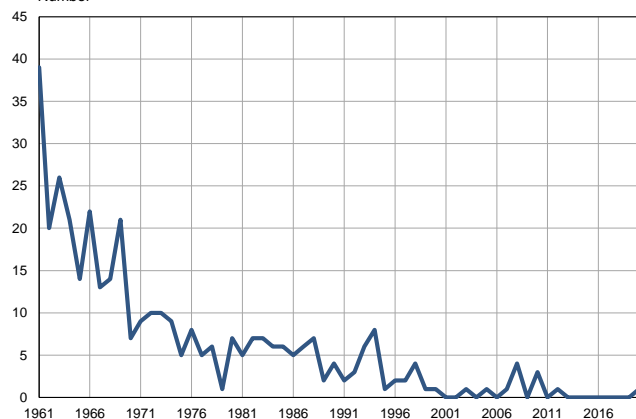
Natural increase per 1,000 population, 1961–2020
Number



Source: Vital Statistics, SORS

Infants deaths, 1961–2020

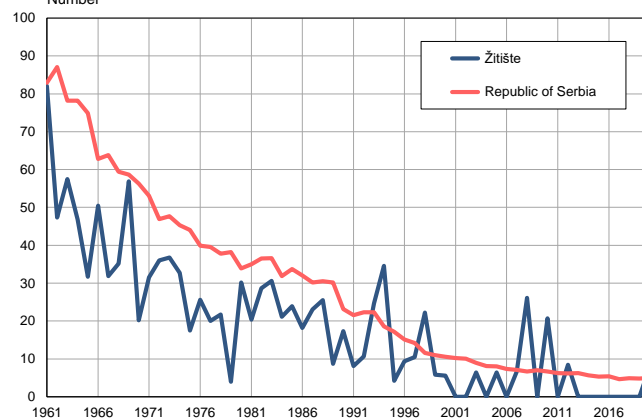
Number



Source: Vital Statistics, SORS

Infants deaths per 1,000 livebirths, 1961–2020

Number



Source: Vital Statistics, SORS

Table. Natural changes of population, Žitište

Year	Number of population	Livebirths	Deaths	Natural increase	Infants deaths	per 1000 population			Infant deaths per 1000 livebirths
						Livebirths	Deaths	Natural increase	
1961	33514	475	320	155	39	14.2	9.5	4.7	82.1
1962	33131	423	366	57	20	12.8	11.0	1.8	47.3
1963	32748	452	353	99	26	13.8	10.8	3.0	57.5
1964	32365	449	364	85	21	13.9	11.2	2.7	46.8
1965	31982	441	331	110	14	13.8	10.3	3.5	31.7
1966	31599	436	290	146	22	13.8	9.2	4.6	50.5
1967	31216	408	329	79	13	13.1	10.5	2.6	31.9
1968	30833	398	333	65	14	12.9	10.8	2.1	35.2
1969	30450	369	360	9	21	12.1	11.8	0.3	56.9
1970	30067	347	330	17	7	11.5	11.0	0.5	20.2
1971	29684	286	345	-59	9	9.6	11.6	-2.0	31.5
1972	29274	278	366	-88	10	9.5	12.5	-3.0	36.0
1973	28863	272	361	-89	10	9.4	12.5	-3.1	36.8
1974	28453	275	346	-71	9	9.7	12.2	-2.5	32.7
1975	28042	285	340	-55	5	10.2	12.1	-1.9	17.5
1976	27632	312	355	-43	8	11.3	12.8	-1.5	25.6
1977	27221	250	331	-81	5	9.2	12.2	-3.0	20.0
1978	26811	276	353	-77	6	10.3	13.2	-2.9	21.7
1979	26400	247	332	-85	1	9.4	12.6	-3.2	4.0
1980	25990	232	374	-142	7	8.9	14.4	-5.5	30.2
1981	25579	245	394	-149	5	9.6	15.4	-5.8	20.4
1982	25302	244	393	-149	7	9.6	15.5	-5.9	28.7
1983	25025	229	437	-208	7	9.2	17.5	-8.3	30.6
1984	24749	285	387	-102	6	11.5	15.6	-4.1	21.1
1985	24472	251	394	-143	6	10.3	16.1	-5.8	23.9
1986	24195	275	369	-94	5	11.4	15.3	-3.9	18.2
1987	23918	260	404	-144	6	10.9	16.9	-6.0	23.1
1988	23641	275	403	-128	7	11.6	17.0	-5.4	25.5
1989	23365	231	422	-191	2	9.9	18.1	-8.2	8.7
1990	23088	231	399	-168	4	10.0	17.3	-7.3	17.3
1991	22811	247	358	-111	2	10.8	15.7	-4.9	8.1
1992	22694	281	465	-184	3	12.4	20.5	-8.1	10.7
1993	22577	243	460	-217	6	10.8	20.4	-9.6	24.7
1994	22460	231	404	-173	8	10.3	18.0	-7.7	34.6
1995	22343	239	389	-150	1	10.7	17.4	-6.7	4.2
1996	22226	212	421	-209	2	9.5	18.9	-9.4	9.4
1997	22109	190	448	-258	2	8.6	20.3	-11.7	10.5
1998	21992	180	407	-227	4	8.2	18.5	-10.3	22.2
1999	21875	171	398	-227	1	7.8	18.2	-10.4	5.8
2000	21758	180	453	-273	1	8.3	20.8	-12.5	5.6
2001	21641	183	348	-165	0	8.5	16.1	-7.6	0.0
2002	20322	170	385	-215	0	8.4	18.9	-10.5	0.0
2003	20026	156	399	-243	1	7.8	19.9	-12.1	6.4
2004	19725	175	404	-229	0	8.9	20.5	-11.6	0.0
2005	19383	156	399	-243	1	8.0	20.6	-12.6	6.4

Table. Natural changes of population, Žitište

Year	Number of population	Livebirths	Deaths	Natural increase	Infants deaths	per 1000 population			Infant deaths per 1000 livebirths
						Livebirths	Deaths	Natural increase	
2006	19014	166	380	-214	0	8.7	20.0	-11.3	0.0
2007	18661	150	362	-212	1	8.0	19.4	-11.4	6.7
2008	18307	153	331	-178	4	8.4	18.1	-9.7	26.1
2009	18005	140	322	-182	0	7.8	17.9	-10.1	0.0
2010	17708	145	347	-202	3	8.2	19.6	-11.4	20.7
2011	16921	135	323	-188	0	8.0	19.1	-11.1	0.0
2012	16600	118	337	-219	1	7.1	20.3	-13.2	8.5
2013	16295	141	323	-182	0	8.7	19.8	-11.2	0.0
2014	16050	131	313	-182	0	8.2	19.5	-11.3	0.0
2015	15814	124	312	-188	0	7.8	19.7	-11.9	0.0
2016	15573	145	279	-134	0	9.3	17.9	-8.6	0.0
2017	15369	147	295	-148	0	9.6	19.2	-9.6	0.0
2018	15173	128	287	-159	0	8.4	18.9	-10.5	0.0
2019	14926	134	289	-155	0	9.0	19.4	-10.4	0.0
2020	14693	128	328	-200	1	8.7	22.3	-13.6	7.8

Source: Vital Statistics, SORS

Definitions

Population size

Number of population in the respective year. The data on the number of population in 1961, 1971, 1981 and 1991 are census data, while for the inter-census years the number of population was calculated as an average inter-census difference. From 2002 are given the population estimates that were calculated according to the census of population results and the annual statistics of natural mechanical population movements.

Livebirths

Absolute number of live births in the course of a year. Live born child means a child giving vital signs after birth (breathing, i.e. heartbeat), even for the shortest time, regardless the mother's pregnancy duration.

Deaths

Absolute number of deaths in the course of a year. Deceased is a person that whenever after having been born live, shows permanently stopped vital signs.

Natural increase

Natural population increase is the number of live births minus the number of deaths.

Infants deaths

Absolute number of infants deaths in the course of a year. Deceased infant is a child that after having been born live and before aged one year, shows permanently stopped vital signs.

Livebirths, per 1 000 population

Livebirths rate is the ratio of the number of live births and the population size in the respective year. The number of live births is divided by the population size and then multiplied by 1000.

Deaths, per 1 000 population

General mortality rate represents the ratio between the number of deaths and the population size in the respective year. The number of deaths is divided by population size and then multiplied by 1000.

Natural increase, per 1 000 population

Natural population increase rate is the difference between the number of live births and the number of deaths, in relation to the population size in the respective year.

Natural population increase rate = (number of live births - number of deaths) / population size * 1000

Infants deaths, per 1 000 livebirths

Infant mortality rate is the ratio of deceased children under 1 year of age and live births in the respective year. The mortality rate is expressed per 1000 live births.

Infant mortality rate = (number of deceased children under 1 year of age / number of live births) * 1000

Additional info:



Download all database data in Excel format:

[Data](#)



DevInfo profiles:

devinfo.stat.gov.rs/SerbiaProfileLauncher/?lang=en



DevInfo online database:

devinfo.stat.gov.rs/vitalna



For additional information or questions please contact:

devinfo@stat.gov.rs