

Natural changes of population 1961 – 2022

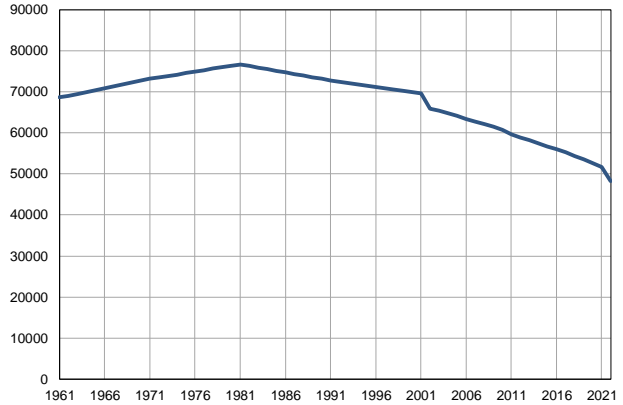
Profile
July 2023

Zaječar

	1961	2022
Population size	68616	48262
Livebirths, Number	809	327
Deaths, Number	766	1106
Natural increase, Number	43	-779
Infants deaths, Number	42	1
Livebirths, per 1,000 population	12	7
Deaths, per 1,000 population	11	23
Natural increase, per 1,000 population	1	-16
Infants deaths, per 1,000 livebirths	52	3

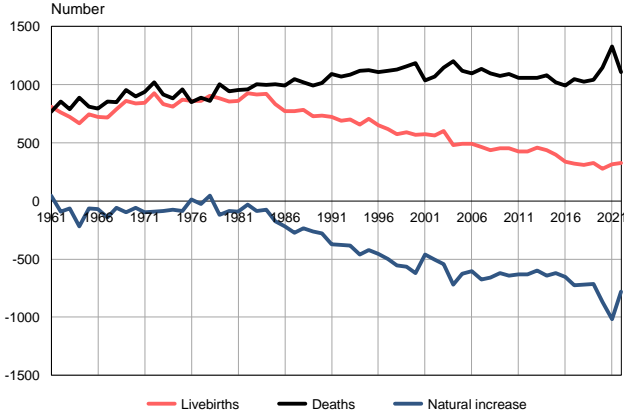
Source: Vital Statistics, SORS

Population size, 1961–2022



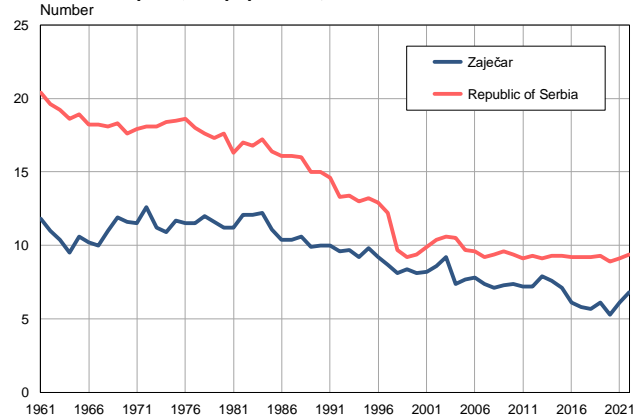
Source: Vital Statistics, SORS

Livebirths, deaths and natural increase, 1961–2022



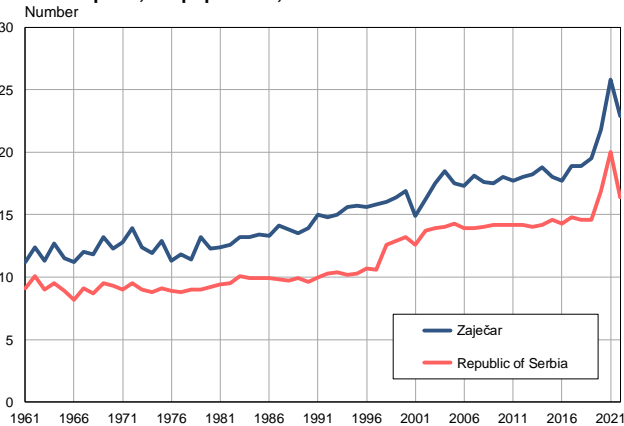
Source: Vital Statistics, SORS

Livebirths per 1,000 population, 1961–2022



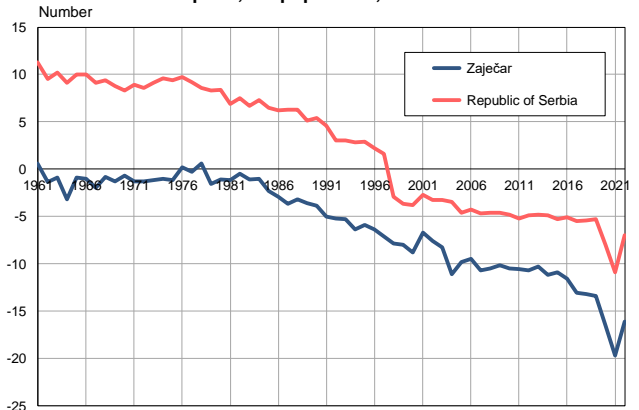
Source: Vital Statistics, SORS

Deaths per 1,000 population, 1961–2022



Source: Vital Statistics, SORS

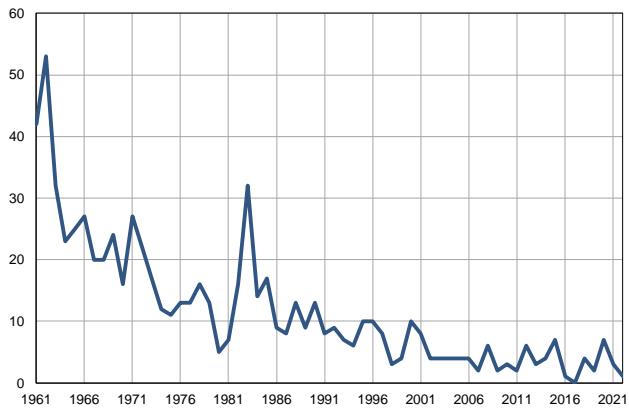
Natural increase per 1,000 population, 1961–2022



Source: Vital Statistics, SORS

Infants deaths, 1961–2022

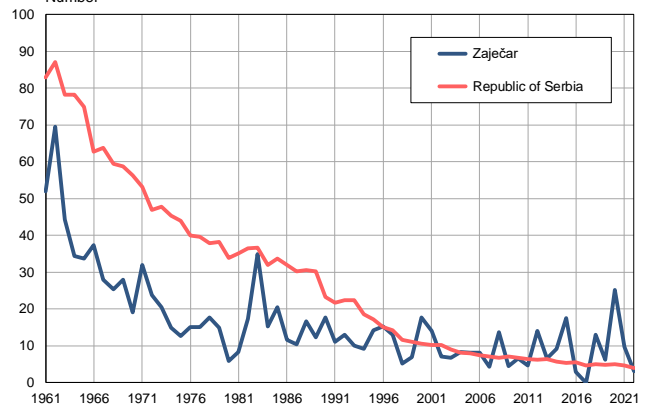
Number



Source: Vital Statistics, SORS

Infants deaths per 1,000 livebirths, 1961–2022

Number



Source: Vital Statistics, SORS

Table. Natural changes of population, Zaječar

Year	Number of population	Livebirths	Deaths	Natural increase	Infants deaths	per 1000 population			Infant deaths per 1000 livebirths
						Livebirths	Deaths	Natural increase	
1961	68616	809	766	43	42	11.8	11.2	0.6	51.9
1962	69068	761	855	-94	53	11.0	12.4	-1.4	69.6
1963	69522	723	789	-66	32	10.4	11.3	-0.9	44.3
1964	69975	668	886	-218	23	9.5	12.7	-3.2	34.4
1965	70428	744	809	-65	25	10.6	11.5	-0.9	33.6
1966	70881	724	792	-68	27	10.2	11.2	-1.0	37.3
1967	71335	716	857	-141	20	10.0	12.0	-2.0	27.9
1968	71787	789	850	-61	20	11.0	11.8	-0.8	25.3
1969	72241	859	954	-95	24	11.9	13.2	-1.3	27.9
1970	72694	840	897	-57	16	11.6	12.3	-0.7	19.0
1971	73147	843	938	-95	27	11.5	12.8	-1.3	32.0
1972	73500	927	1020	-93	22	12.6	13.9	-1.3	23.7
1973	73854	830	917	-87	17	11.2	12.4	-1.2	20.5
1974	74207	810	884	-74	12	10.9	11.9	-1.0	14.8
1975	74560	873	960	-87	11	11.7	12.9	-1.2	12.6
1976	74913	862	847	15	13	11.5	11.3	0.2	15.1
1977	75267	862	887	-25	13	11.5	11.8	-0.3	15.1
1978	75621	905	861	44	16	12.0	11.4	0.6	17.7
1979	75974	881	1002	-121	13	11.6	13.2	-1.6	14.8
1980	76328	854	942	-88	5	11.2	12.3	-1.1	5.9
1981	76681	858	952	-94	7	11.2	12.4	-1.2	8.2
1982	76289	925	959	-34	16	12.1	12.6	-0.5	17.3
1983	75897	917	1004	-87	32	12.1	13.2	-1.1	34.9
1984	75506	923	996	-73	14	12.2	13.2	-1.0	15.2
1985	75114	832	1004	-172	17	11.1	13.4	-2.3	20.4
1986	74722	774	992	-218	9	10.4	13.3	-2.9	11.6
1987	74330	772	1046	-274	8	10.4	14.1	-3.7	10.4
1988	73938	785	1018	-233	13	10.6	13.8	-3.2	16.6
1989	73547	729	992	-263	9	9.9	13.5	-3.6	12.3
1990	73155	735	1016	-281	13	10.0	13.9	-3.9	17.7
1991	72763	724	1094	-370	8	10.0	15.0	-5.0	11.0
1992	72449	692	1069	-377	9	9.6	14.8	-5.2	13.0
1993	72134	700	1085	-385	7	9.7	15.0	-5.3	10.0
1994	71822	659	1119	-460	6	9.2	15.6	-6.4	9.1
1995	71507	704	1124	-420	10	9.8	15.7	-5.9	14.2
1996	71194	653	1110	-457	10	9.2	15.6	-6.4	15.3
1997	70880	616	1118	-502	8	8.7	15.8	-7.1	13.0
1998	70566	575	1130	-555	3	8.1	16.0	-7.9	5.2
1999	70252	589	1155	-566	4	8.4	16.4	-8.0	6.8
2000	69938	566	1185	-619	10	8.1	16.9	-8.8	17.7
2001	69624	573	1035	-462	8	8.2	14.9	-6.7	14.0
2002	65923	565	1070	-505	4	8.6	16.2	-7.6	7.1
2003	65407	601	1144	-543	4	9.2	17.5	-8.3	6.7
2004	64809	481	1199	-718	4	7.4	18.5	-11.1	8.3
2005	64100	493	1120	-627	4	7.7	17.5	-9.8	8.1

Table. Natural changes of population, Zaječar

Year	Number of population	Livebirths	Deaths	Natural increase	Infants deaths	per 1000 population			Infant deaths per 1000 livebirths
						Livebirths	Deaths	Natural increase	
2006	63398	492	1096	-604	4	7.8	17.3	-9.5	8.1
2007	62743	464	1138	-674	2	7.4	18.1	-10.7	4.3
2008	62106	438	1095	-657	6	7.1	17.6	-10.5	13.7
2009	61446	451	1073	-622	2	7.3	17.5	-10.2	4.4
2010	60756	452	1092	-640	3	7.4	18.0	-10.5	6.6
2011	59578	427	1056	-629	2	7.2	17.7	-10.6	4.7
2012	58856	425	1057	-632	6	7.2	18.0	-10.7	14.1
2013	58183	459	1057	-598	3	7.9	18.2	-10.3	6.5
2014	57457	436	1081	-645	4	7.6	18.8	-11.2	9.2
2015	56714	400	1021	-621	7	7.1	18.0	-10.9	17.5
2016	55987	340	991	-651	1	6.1	17.7	-11.6	2.9
2017	55205	321	1046	-725	0	5.8	18.9	-13.1	0.0
2018	54355	309	1028	-719	4	5.7	18.9	-13.2	12.9
2019	53509	327	1042	-715	2	6.1	19.5	-13.4	6.1
2020	52637	278	1147	-869	7	5.3	21.8	-16.5	25.2
2021	51607	313	1330	-1017	3	6.1	25.8	-19.7	9.6
2022	48262	327	1106	-779	1	6.8	22.9	-16.1	3.1

Source: Vital Statistics, SORS

Definitions

Population size

Number of population in the respective year. The data on the number of population in 1961, 1971, 1981 and 1991 are census data, while for the inter-census years the number of population was calculated as an average inter-census difference. From 2002 are given the population estimates that were calculated according to the census of population results and the annual statistics of natural mechanical population movements.

Livebirths

Absolute number of live births in the course of a year. Live born child means a child giving vital signs after birth (breathing, i.e. heartbeat), even for the shortest time, regardless the mother's pregnancy duration.

Deaths

Absolute number of deaths in the course of a year. Deceased is a person that whenever after having been born live, shows permanently stopped vital signs.

Natural increase

Natural population increase is the number of live births minus the number of deaths.

Infants deaths

Absolute number of infants deaths in the course of a year. Deceased infant is a child that after having been born live and before aged one year, shows permanently stopped vital signs.

Livebirths, per 1 000 population

Livebirths rate is the ratio of the number of live births and the population size in the respective year. The number of live births is divided by the population size and then multiplied by 1000.

Deaths, per 1 000 population

General mortality rate represents the ratio between the number of deaths and the population size in the respective year. The number of deaths is divided by population size and then multiplied by 1000.

Natural increase, per 1 000 population

Natural population increase rate is the difference between the number of live births and the number of deaths, in relation to the population size in the respective year.

Natural population increase rate = (number of live births - number of deaths) / population size * 1000

Infants deaths, per 1 000 livebirths

Infant mortality rate is the ratio of deceased children under 1 year of age and live births in the respective year. The mortality rate is expressed per 1000 live births.

Infant mortality rate = (number of deceased children under 1 year of age / number of live births) * 1000

Additional info:



Download all database data in Excel format:

[Data](#)



DevInfo profiles:

devinfo.stat.gov.rs/SerbiaProfileLauncher/?lang=en



DevInfo online database:

devinfo.stat.gov.rs/vitalna



For additional information or questions please contact:

devinfo@stat.gov.rs