

Natural changes of population 1961 – 2022

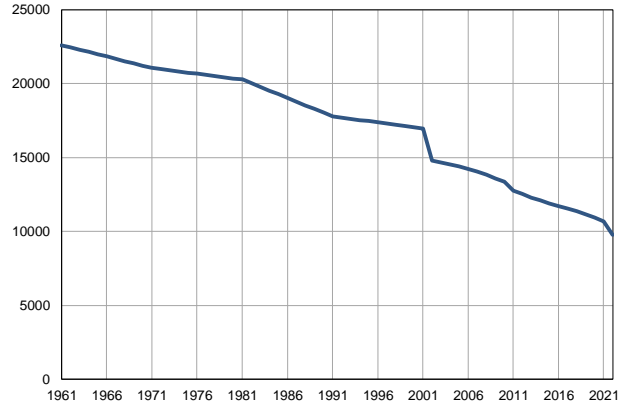
Profile
July 2023

Žagubica

	1961	2022
Population size	22602	9771
Livebirths, Number	299	63
Deaths, Number	225	206
Natural increase, Number	74	-143
Infants deaths, Number	18	0
Livebirths, per 1,000 population	13	6
Deaths, per 1,000 population	10	21
Natural increase, per 1,000 population	3	-15
Infants deaths, per 1,000 livebirths	60	0

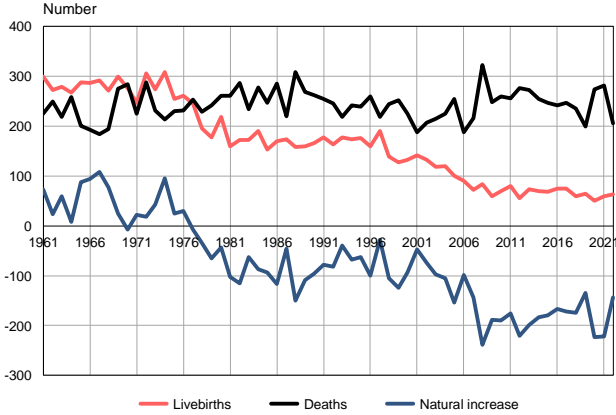
Source: Vital Statistics, SORS

Population size, 1961–2022



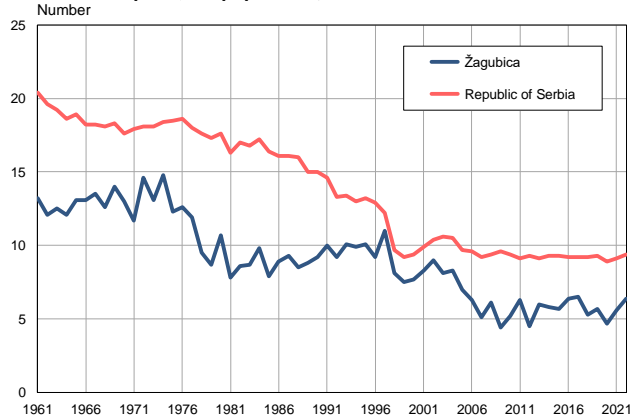
Source: Vital Statistics, SORS

Livebirths, deaths and natural increase, 1961–2022



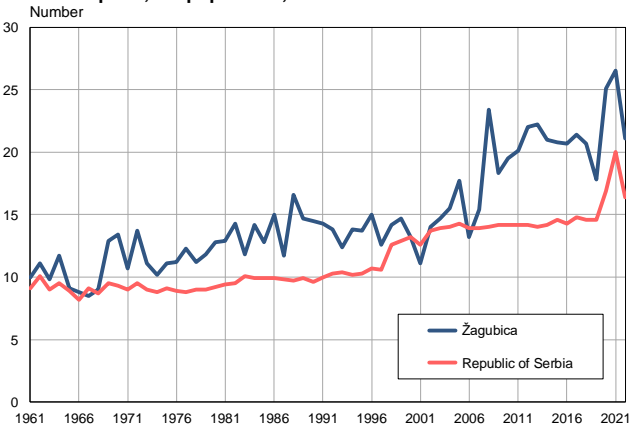
Source: Vital Statistics, SORS

Livebirths per 1,000 population, 1961–2022



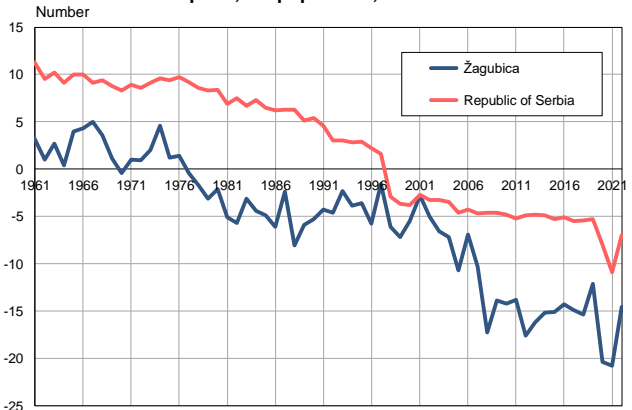
Source: Vital Statistics, SORS

Deaths per 1,000 population, 1961–2022



Source: Vital Statistics, SORS

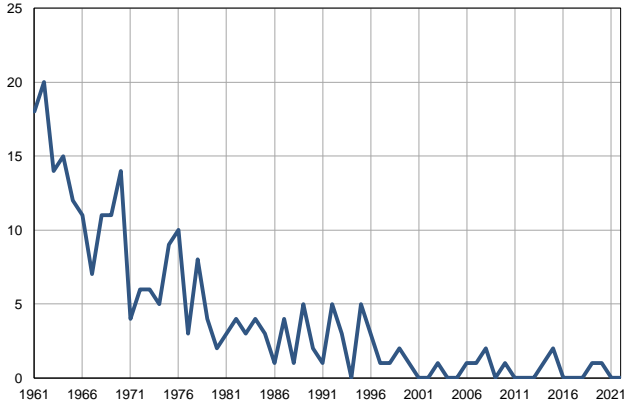
Natural increase per 1,000 population, 1961–2022



Source: Vital Statistics, SORS

Infants deaths, 1961–2022

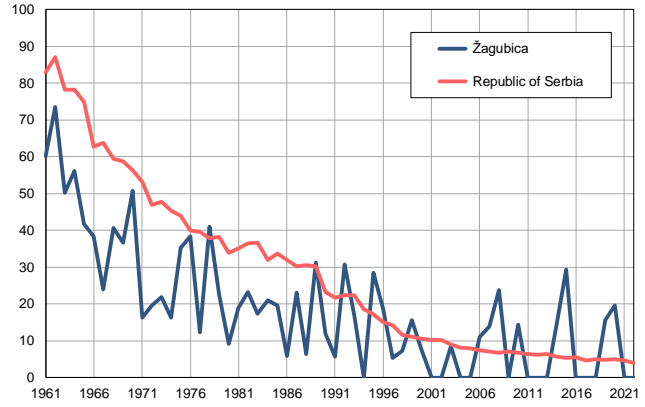
Number



Source: Vital Statistics, SORS

Infants deaths per 1,000 livebirths, 1961–2022

Number



Source: Vital Statistics, SORS

Table. Natural changes of population, Žagubica

Year	Number of population	Livebirths	Deaths	Natural increase	Infants deaths	per 1000 population			Infant deaths per 1000 livebirths
						Livebirths	Deaths	Natural increase	
1961	22602	299	225	74	18	13.2	10.0	3.2	60.2
1962	22447	272	249	23	20	12.1	11.1	1.0	73.5
1963	22292	279	219	60	14	12.5	9.8	2.7	50.2
1964	22138	267	259	8	15	12.1	11.7	0.4	56.2
1965	21983	288	200	88	12	13.1	9.1	4.0	41.7
1966	21829	287	193	94	11	13.1	8.8	4.3	38.3
1967	21674	292	184	108	7	13.5	8.5	5.0	24.0
1968	21519	271	194	77	11	12.6	9.0	3.6	40.6
1969	21364	300	275	25	11	14.0	12.9	1.1	36.7
1970	21210	276	284	-8	14	13.0	13.4	-0.4	50.7
1971	21055	247	225	22	4	11.7	10.7	1.0	16.2
1972	20977	306	288	18	6	14.6	13.7	0.9	19.6
1973	20899	274	231	43	6	13.1	11.1	2.0	21.9
1974	20821	308	213	95	5	14.8	10.2	4.6	16.2
1975	20743	255	230	25	9	12.3	11.1	1.2	35.3
1976	20665	261	231	30	10	12.6	11.2	1.4	38.3
1977	20587	245	253	-8	3	11.9	12.3	-0.4	12.2
1978	20509	195	229	-34	8	9.5	11.2	-1.7	41.0
1979	20431	177	242	-65	4	8.7	11.8	-3.1	22.6
1980	20353	218	261	-43	2	10.7	12.8	-2.1	9.2
1981	20275	159	261	-102	3	7.8	12.9	-5.1	18.9
1982	20025	172	287	-115	4	8.6	14.3	-5.7	23.3
1983	19775	172	234	-62	3	8.7	11.8	-3.1	17.4
1984	19526	191	278	-87	4	9.8	14.2	-4.4	20.9
1985	19276	153	247	-94	3	7.9	12.8	-4.9	19.6
1986	19026	170	286	-116	1	8.9	15.0	-6.1	5.9
1987	18776	174	220	-46	4	9.3	11.7	-2.4	23.0
1988	18526	158	308	-150	1	8.5	16.6	-8.1	6.3
1989	18277	160	269	-109	5	8.8	14.7	-5.9	31.3
1990	18027	166	262	-96	2	9.2	14.5	-5.3	12.0
1991	17777	177	255	-78	1	10.0	14.3	-4.3	5.6
1992	17697	163	245	-82	5	9.2	13.8	-4.6	30.7
1993	17616	178	218	-40	3	10.1	12.4	-2.3	16.9
1994	17536	174	242	-68	0	9.9	13.8	-3.9	0.0
1995	17455	176	239	-63	5	10.1	13.7	-3.6	28.4
1996	17375	160	260	-100	3	9.2	15.0	-5.8	18.8
1997	17294	190	218	-28	1	11.0	12.6	-1.6	5.3
1998	17214	139	244	-105	1	8.1	14.2	-6.1	7.2
1999	17133	128	252	-124	2	7.5	14.7	-7.2	15.6
2000	17053	132	225	-93	1	7.7	13.2	-5.5	7.6
2001	16972	141	188	-47	0	8.3	11.1	-2.8	0.0
2002	14780	133	207	-74	0	9.0	14.0	-5.0	0.0
2003	14648	118	215	-97	1	8.1	14.7	-6.6	8.5
2004	14532	120	225	-105	0	8.3	15.5	-7.2	0.0
2005	14382	101	255	-154	0	7.0	17.7	-10.7	0.0

Table. Natural changes of population, Žagubica

Year	Number of population	Livebirths	Deaths	Natural increase	Infants deaths	per 1000 population			Infant deaths per 1000 livebirths
						Livebirths	Deaths	Natural increase	
2006	14205	90	188	-98	1	6.3	13.2	-6.9	11.1
2007	14047	72	216	-144	1	5.1	15.4	-10.3	13.9
2008	13825	84	323	-239	2	6.1	23.4	-17.3	23.8
2009	13569	60	248	-188	0	4.4	18.3	-13.9	0.0
2010	13359	70	260	-190	1	5.2	19.5	-14.2	14.3
2011	12756	80	256	-176	0	6.3	20.1	-13.8	0.0
2012	12525	56	276	-220	0	4.5	22.0	-17.6	0.0
2013	12292	74	273	-199	0	6.0	22.2	-16.2	0.0
2014	12084	70	254	-184	1	5.8	21.0	-15.2	14.3
2015	11899	68	247	-179	2	5.7	20.8	-15.1	29.4
2016	11708	75	242	-167	0	6.4	20.7	-14.3	0.0
2017	11528	75	247	-172	0	6.5	21.4	-14.9	0.0
2018	11348	60	235	-175	0	5.3	20.7	-15.4	0.0
2019	11159	64	199	-135	1	5.7	17.8	-12.1	15.6
2020	10920	51	274	-223	1	4.7	25.1	-20.4	19.6
2021	10653	60	282	-222	0	5.6	26.5	-20.8	0.0
2022	9771	63	206	-143	0	6.4	21.1	-14.6	0.0

Source: Vital Statistics, SORS

Definitions

Population size

Number of population in the respective year. The data on the number of population in 1961, 1971, 1981 and 1991 are census data, while for the inter-census years the number of population was calculated as an average inter-census difference. From 2002 are given the population estimates that were calculated according to the census of population results and the annual statistics of natural mechanical population movements.

Livebirths

Absolute number of live births in the course of a year. Live born child means a child giving vital signs after birth (breathing, i.e. heartbeat), even for the shortest time, regardless the mother's pregnancy duration.

Deaths

Absolute number of deaths in the course of a year. Deceased is a person that whenever after having been born live, shows permanently stopped vital signs.

Natural increase

Natural population increase is the number of live births minus the number of deaths.

Infants deaths

Absolute number of infants deaths in the course of a year. Deceased infant is a child that after having been born live and before aged one year, shows permanently stopped vital signs.

Livebirths, per 1 000 population

Livebirths rate is the ratio of the number of live births and the population size in the respective year. The number of live births is divided by the population size and then multiplied by 1000.

Deaths, per 1 000 population

General mortality rate represents the ratio between the number of deaths and the population size in the respective year. The number of deaths is divided by population size and then multiplied by 1000.

Natural increase, per 1 000 population

Natural population increase rate is the difference between the number of live births and the number of deaths, in relation to the population size in the respective year.

Natural population increase rate = (number of live births - number of deaths) / population size * 1000

Infants deaths, per 1 000 livebirths

Infant mortality rate is the ratio of deceased children under 1 year of age and live births in the respective year. The mortality rate is expressed per 1000 live births.

Infant mortality rate = (number of deceased children under 1 year of age / number of live births) * 1000

Additional info:



Download all database data in Excel format:

[Data](#)



DevInfo profiles:

devinfo.stat.gov.rs/SerbiaProfileLauncher/?lang=en



DevInfo online database:

devinfo.stat.gov.rs/vitalna



For additional information or questions please contact:

devinfo@stat.gov.rs