

Natural changes of population 1961 – 2022

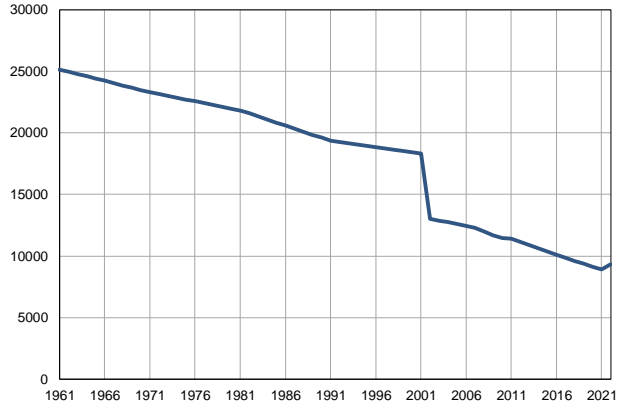
Profile
July 2023

Žabari

	1961	2022
Population size	25144	9335
Livebirths, Number	276	58
Deaths, Number	277	205
Natural increase, Number	-1	-147
Infants deaths, Number	17	0
Livebirths, per 1,000 population	11	6
Deaths, per 1,000 population	11	22
Natural increase, per 1,000 population	0	-16
Infants deaths, per 1,000 livebirths	62	0

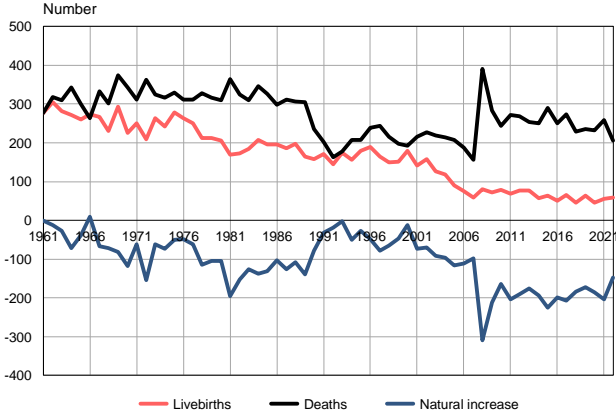
Source: Vital Statistics, SORS

Population size, 1961–2022



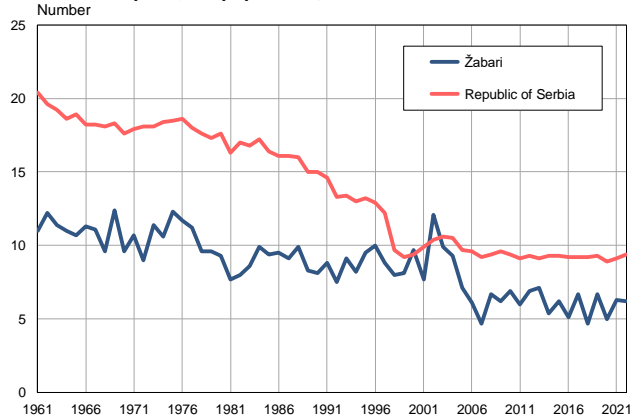
Source: Vital Statistics, SORS

Livebirths, deaths and natural increase, 1961–2022



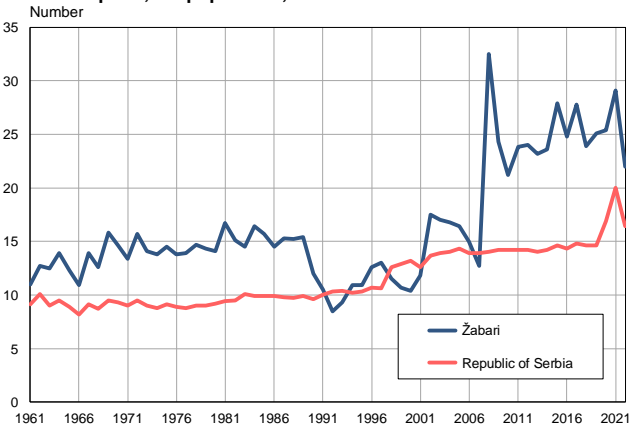
Source: Vital Statistics, SORS

Livebirths per 1,000 population, 1961–2022



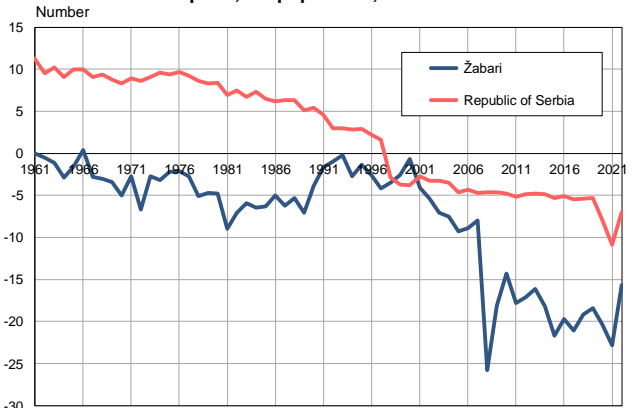
Source: Vital Statistics, SORS

Deaths per 1,000 population, 1961–2022



Source: Vital Statistics, SORS

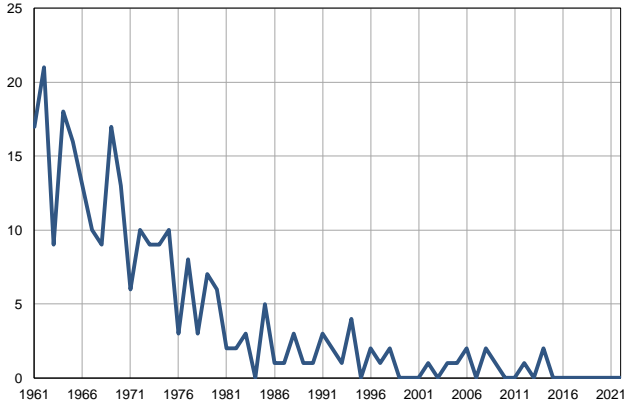
Natural increase per 1,000 population, 1961–2022



Source: Vital Statistics, SORS

Infants deaths, 1961–2022

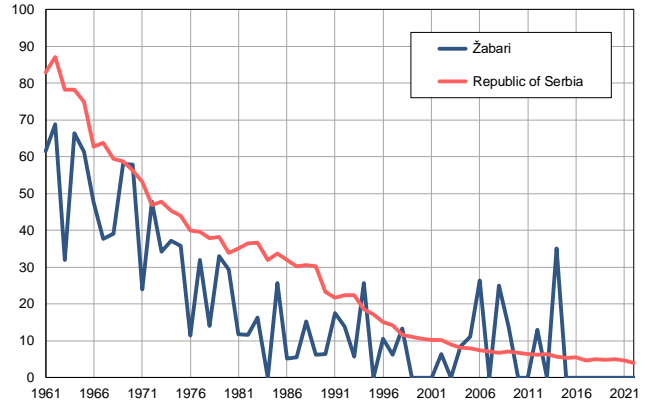
Number



Source: Vital Statistics, SORS

Infants deaths per 1,000 livebirths, 1961–2022

Number



Source: Vital Statistics, SORS

Table. Natural changes of population, Žabari

Year	Number of population	Livebirths	Deaths	Natural increase	Infants deaths	per 1000 population			Infant deaths per 1000 livebirths
						Livebirths	Deaths	Natural increase	
1961	25144	276	277	-1	17	11.0	11.0	0.0	61.6
1962	24959	305	318	-13	21	12.2	12.7	-0.5	68.9
1963	24775	282	309	-27	9	11.4	12.5	-1.1	31.9
1964	24590	271	343	-72	18	11.0	13.9	-2.9	66.4
1965	24406	261	299	-38	16	10.7	12.3	-1.6	61.3
1966	24220	273	263	10	13	11.3	10.9	0.4	47.6
1967	24036	266	333	-67	10	11.1	13.9	-2.8	37.6
1968	23852	230	301	-71	9	9.6	12.6	-3.0	39.1
1969	23668	293	374	-81	17	12.4	15.8	-3.4	58.0
1970	23483	225	343	-118	13	9.6	14.6	-5.0	57.8
1971	23298	250	312	-62	6	10.7	13.4	-2.7	24.0
1972	23150	209	363	-154	10	9.0	15.7	-6.7	47.8
1973	23002	263	325	-62	9	11.4	14.1	-2.7	34.2
1974	22854	242	316	-74	9	10.6	13.8	-3.2	37.2
1975	22706	279	330	-51	10	12.3	14.5	-2.2	35.8
1976	22558	263	311	-48	3	11.7	13.8	-2.1	11.4
1977	22411	250	311	-61	8	11.2	13.9	-2.7	32.0
1978	22262	213	328	-115	3	9.6	14.7	-5.1	14.1
1979	22115	212	316	-104	7	9.6	14.3	-4.7	33.0
1980	21966	205	310	-105	6	9.3	14.1	-4.8	29.3
1981	21819	169	365	-196	2	7.7	16.7	-9.0	11.8
1982	21572	173	325	-152	2	8.0	15.1	-7.1	11.6
1983	21325	184	310	-126	3	8.6	14.5	-5.9	16.3
1984	21077	208	346	-138	0	9.9	16.4	-6.5	0.0
1985	20830	195	326	-131	5	9.4	15.7	-6.3	25.6
1986	20583	195	298	-103	1	9.5	14.5	-5.0	5.1
1987	20336	186	312	-126	1	9.1	15.3	-6.2	5.4
1988	20089	198	306	-108	3	9.9	15.2	-5.3	15.2
1989	19841	165	305	-140	1	8.3	15.4	-7.1	6.1
1990	19594	158	236	-78	1	8.1	12.0	-3.9	6.3
1991	19347	171	203	-32	3	8.8	10.5	-1.7	17.5
1992	19246	144	163	-19	2	7.5	8.5	-1.0	13.9
1993	19146	175	178	-3	1	9.1	9.3	-0.2	5.7
1994	19045	156	207	-51	4	8.2	10.9	-2.7	25.6
1995	18944	180	207	-27	0	9.5	10.9	-1.4	0.0
1996	18843	189	238	-49	2	10.0	12.6	-2.6	10.6
1997	18743	165	244	-79	1	8.8	13.0	-4.2	6.1
1998	18642	150	215	-65	2	8.0	11.5	-3.5	13.3
1999	18541	151	198	-47	0	8.1	10.7	-2.6	0.0
2000	18440	179	192	-13	0	9.7	10.4	-0.7	0.0
2001	18340	142	216	-74	0	7.7	11.8	-4.1	0.0
2002	13001	157	227	-70	1	12.1	17.5	-5.4	6.4
2003	12865	127	219	-92	0	9.9	17.0	-7.1	0.0
2004	12736	118	214	-96	1	9.3	16.8	-7.5	8.5
2005	12594	90	207	-117	1	7.1	16.4	-9.3	11.1

Table. Natural changes of population, Žabari

Year	Number of population	Livebirths	Deaths	Natural increase	Infants deaths	per 1000 population			Infant deaths per 1000 livebirths
						Livebirths	Deaths	Natural increase	
2006	12427	76	187	-111	2	6.1	15.0	-8.9	26.3
2007	12270	58	156	-98	0	4.7	12.7	-8.0	0.0
2008	12003	80	390	-310	2	6.7	32.5	-25.8	25.0
2009	11680	72	284	-212	1	6.2	24.3	-18.1	13.9
2010	11457	79	243	-164	0	6.9	21.2	-14.3	0.0
2011	11395	68	271	-203	0	6.0	23.8	-17.8	0.0
2012	11159	77	268	-191	1	6.9	24.0	-17.1	13.0
2013	10906	77	253	-176	0	7.1	23.2	-16.1	0.0
2014	10645	57	251	-194	2	5.4	23.6	-18.2	35.1
2015	10378	64	290	-226	0	6.2	27.9	-21.7	0.0
2016	10097	51	250	-199	0	5.1	24.8	-19.7	0.0
2017	9832	66	273	-207	0	6.7	27.8	-21.1	0.0
2018	9585	45	229	-184	0	4.7	23.9	-19.2	0.0
2019	9359	63	235	-172	0	6.7	25.1	-18.4	0.0
2020	9143	46	232	-186	0	5.0	25.4	-20.4	0.0
2021	8903	56	259	-203	0	6.3	29.1	-22.8	0.0
2022	9335	58	205	-147	0	6.2	22.0	-15.7	0.0

Source: Vital Statistics, SORS

Definitions

Population size

Number of population in the respective year. The data on the number of population in 1961, 1971, 1981 and 1991 are census data, while for the inter-census years the number of population was calculated as an average inter-census difference. From 2002 are given the population estimates that were calculated according to the census of population results and the annual statistics of natural mechanical population movements.

Livebirths

Absolute number of live births in the course of a year. Live born child means a child giving vital signs after birth (breathing, i.e. heartbeat), even for the shortest time, regardless the mother's pregnancy duration.

Deaths

Absolute number of deaths in the course of a year. Deceased is a person that whenever after having been born live, shows permanently stopped vital signs.

Natural increase

Natural population increase is the number of live births minus the number of deaths.

Infants deaths

Absolute number of infants deaths in the course of a year. Deceased infant is a child that after having been born live and before aged one year, shows permanently stopped vital signs.

Livebirths, per 1 000 population

Livebirths rate is the ratio of the number of live births and the population size in the respective year. The number of live births is divided by the population size and then multiplied by 1000.

Deaths, per 1 000 population

General mortality rate represents the ratio between the number of deaths and the population size in the respective year. The number of deaths is divided by population size and then multiplied by 1000.

Natural increase, per 1 000 population

Natural population increase rate is the difference between the number of live births and the number of deaths, in relation to the population size in the respective year.

Natural population increase rate = (number of live births - number of deaths) / population size * 1000

Infants deaths, per 1 000 livebirths

Infant mortality rate is the ratio of deceased children under 1 year of age and live births in the respective year. The mortality rate is expressed per 1000 live births.

Infant mortality rate = (number of deceased children under 1 year of age / number of live births) * 1000

Additional info:



Download all database data in Excel format:

[Data](#)



DevInfo profiles:

devinfo.stat.gov.rs/SerbiaProfileLauncher/?lang=en



DevInfo online database:

devinfo.stat.gov.rs/vitalna



For additional information or questions please contact:

devinfo@stat.gov.rs