

Natural changes of population 1961 – 2022

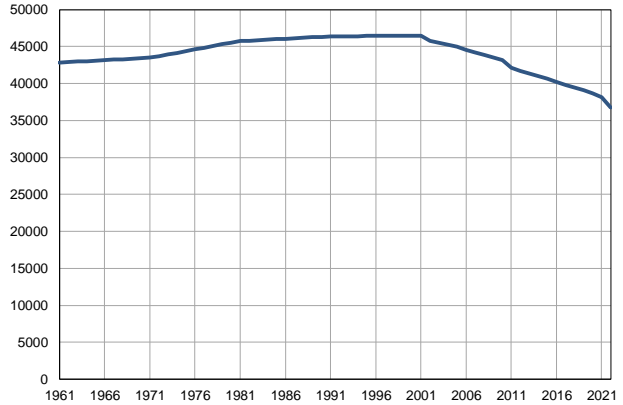
Profile
July 2023

Vrbas

	1961	2022
Population size	42853	36755
Livebirths, Number	875	359
Deaths, Number	330	631
Natural increase, Number	545	-272
Infants deaths, Number	58	0
Livebirths, per 1,000 population	20	10
Deaths, per 1,000 population	8	17
Natural increase, per 1,000 population	13	-7
Infants deaths, per 1,000 livebirths	66	0

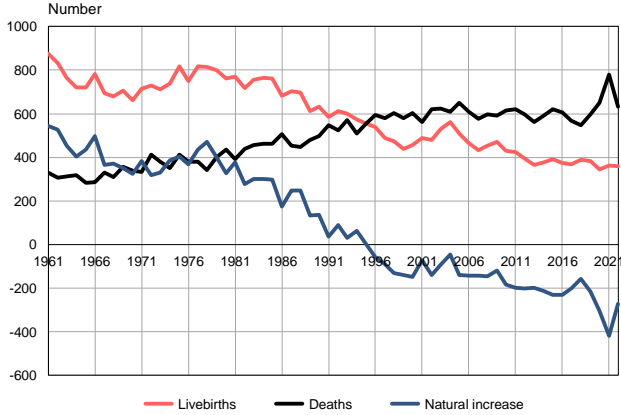
Source: Vital Statistics, SORS

Population size, 1961–2022



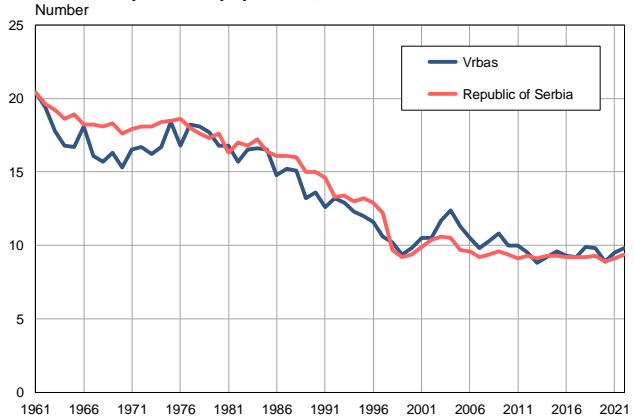
Source: Vital Statistics, SORS

Livebirths, deaths and natural increase, 1961–2022



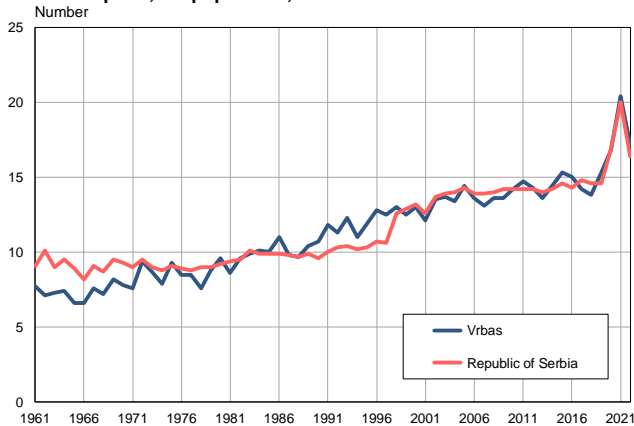
Source: Vital Statistics, SORS

Livebirths per 1,000 population, 1961–2022



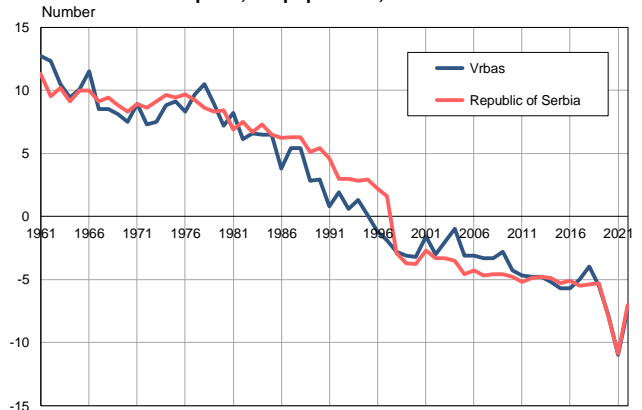
Source: Vital Statistics, SORS

Deaths per 1,000 population, 1961–2022



Source: Vital Statistics, SORS

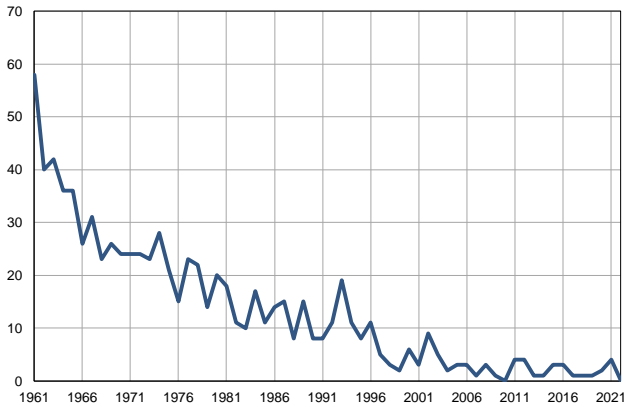
Natural increase per 1,000 population, 1961–2022



Source: Vital Statistics, SORS

Infants deaths, 1961–2022

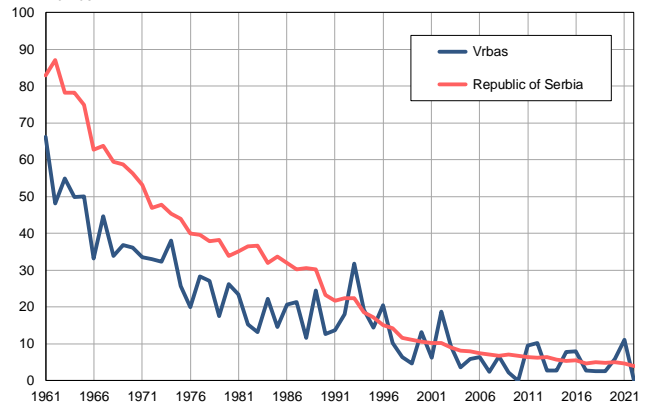
Number



Source: Vital Statistics, SORS

Infants deaths per 1,000 livebirths, 1961–2022

Number



Source: Vital Statistics, SORS

Table. Natural changes of population, Vrbas

Year	Number of population	Livebirths	Deaths	Natural increase	Infants deaths	per 1000 population			Infant deaths per 1000 livebirths
						Livebirths	Deaths	Natural increase	
1961	42853	875	330	545	58	20.4	7.7	12.7	66.3
1962	42916	832	306	526	40	19.4	7.1	12.3	48.1
1963	42980	765	313	452	42	17.8	7.3	10.5	54.9
1964	43044	721	319	402	36	16.8	7.4	9.4	49.9
1965	43109	720	284	436	36	16.7	6.6	10.1	50.0
1966	43171	782	286	496	26	18.1	6.6	11.5	33.2
1967	43235	695	329	366	31	16.1	7.6	8.5	44.6
1968	43299	680	310	370	23	15.7	7.2	8.5	33.8
1969	43363	706	355	351	26	16.3	8.2	8.1	36.8
1970	43426	663	339	324	24	15.3	7.8	7.5	36.2
1971	43490	716	332	384	24	16.5	7.6	8.9	33.5
1972	43717	729	411	318	24	16.7	9.4	7.3	32.9
1973	43943	712	381	331	23	16.2	8.7	7.5	32.3
1974	44170	737	350	387	28	16.7	7.9	8.8	38.0
1975	44396	816	413	403	21	18.4	9.3	9.1	25.7
1976	44623	750	381	369	15	16.8	8.5	8.3	20.0
1977	44850	816	379	437	23	18.2	8.5	9.7	28.2
1978	45076	815	343	472	22	18.1	7.6	10.5	27.0
1979	45303	800	400	400	14	17.7	8.8	8.9	17.5
1980	45529	763	437	326	20	16.8	9.6	7.2	26.2
1981	45756	769	392	377	18	16.8	8.6	8.2	23.4
1982	45821	718	440	278	11	15.7	9.6	6.1	15.3
1983	45886	756	456	300	10	16.5	9.9	6.6	13.2
1984	45951	765	463	302	17	16.6	10.1	6.5	22.2
1985	46016	761	462	299	11	16.5	10.0	6.5	14.5
1986	46081	681	507	174	14	14.8	11.0	3.8	20.6
1987	46145	702	454	248	15	15.2	9.8	5.4	21.4
1988	46210	697	448	249	8	15.1	9.7	5.4	11.5
1989	46275	613	480	133	15	13.2	10.4	2.8	24.5
1990	46340	632	496	136	8	13.6	10.7	2.9	12.7
1991	46405	584	547	37	8	12.6	11.8	0.8	13.7
1992	46411	612	523	89	11	13.2	11.3	1.9	18.0
1993	46418	600	570	30	19	12.9	12.3	0.6	31.7
1994	46424	573	509	64	11	12.3	11.0	1.3	19.2
1995	46431	557	552	5	8	12.0	11.9	0.1	14.4
1996	46437	537	595	-58	11	11.6	12.8	-1.2	20.5
1997	46444	490	581	-91	5	10.6	12.5	-1.9	10.2
1998	46450	473	604	-131	3	10.2	13.0	-2.8	6.3
1999	46457	438	579	-141	2	9.4	12.5	-3.1	4.6
2000	46463	455	604	-149	6	9.8	13.0	-3.2	13.2
2001	46470	490	561	-71	3	10.5	12.1	-1.6	6.1
2002	45764	481	620	-139	9	10.5	13.5	-3.0	18.7
2003	45502	531	623	-92	5	11.7	13.7	-2.0	9.4
2004	45287	562	609	-47	2	12.4	13.4	-1.0	3.6
2005	44981	509	649	-140	3	11.3	14.4	-3.1	5.9

Table. Natural changes of population, Vrbas

Year	Number of population	Livebirths	Deaths	Natural increase	Infants deaths	per 1000 population			Infant deaths per 1000 livebirths
						Livebirths	Deaths	Natural increase	
2006	44570	466	608	-142	3	10.5	13.6	-3.1	6.4
2007	44202	434	577	-143	1	9.8	13.1	-3.3	2.3
2008	43840	453	598	-145	3	10.3	13.6	-3.3	6.6
2009	43516	471	591	-120	1	10.8	13.6	-2.8	2.1
2010	43198	431	615	-184	0	10.0	14.2	-4.3	0.0
2011	42139	423	620	-197	4	10.0	14.7	-4.7	9.5
2012	41730	395	597	-202	4	9.5	14.3	-4.8	10.1
2013	41378	365	563	-198	1	8.8	13.6	-4.8	2.7
2014	41029	377	590	-213	1	9.2	14.4	-5.2	2.7
2015	40634	391	621	-230	3	9.6	15.3	-5.7	7.7
2016	40214	374	605	-231	3	9.3	15.0	-5.7	8.0
2017	39821	367	567	-200	1	9.2	14.2	-5.0	2.7
2018	39482	390	546	-156	1	9.9	13.8	-4.0	2.6
2019	39099	382	597	-215	1	9.8	15.3	-5.5	2.6
2020	38654	345	650	-305	2	8.9	16.8	-7.9	5.8
2021	38119	361	779	-418	4	9.5	20.4	-11.0	11.1
2022	36755	359	631	-272	0	9.8	17.2	-7.4	0.0

Source: Vital Statistics, SORS

Definitions

Population size

Number of population in the respective year. The data on the number of population in 1961, 1971, 1981 and 1991 are census data, while for the inter-census years the number of population was calculated as an average inter-census difference. From 2002 are given the population estimates that were calculated according to the census of population results and the annual statistics of natural mechanical population movements.

Livebirths

Absolute number of live births in the course of a year. Live born child means a child giving vital signs after birth (breathing, i.e. heartbeat), even for the shortest time, regardless the mother's pregnancy duration.

Deaths

Absolute number of deaths in the course of a year. Deceased is a person that whenever after having been born live, shows permanently stopped vital signs.

Natural increase

Natural population increase is the number of live births minus the number of deaths.

Infants deaths

Absolute number of infants deaths in the course of a year. Deceased infant is a child that after having been born live and before aged one year, shows permanently stopped vital signs.

Livebirths, per 1 000 population

Livebirths rate is the ratio of the number of live births and the population size in the respective year. The number of live births is divided by the population size and then multiplied by 1000.

Deaths, per 1 000 population

General mortality rate represents the ratio between the number of deaths and the population size in the respective year. The number of deaths is divided by population size and then multiplied by 1000.

Natural increase, per 1 000 population

Natural population increase rate is the difference between the number of live births and the number of deaths, in relation to the population size in the respective year.

Natural population increase rate = (number of live births - number of deaths) / population size * 1000

Infants deaths, per 1 000 livebirths

Infant mortality rate is the ratio of deceased children under 1 year of age and live births in the respective year. The mortality rate is expressed per 1000 live births.

Infant mortality rate = (number of deceased children under 1 year of age / number of live births) * 1000

Additional info:



Download all database data in Excel format:

[Data](#)



DevInfo profiles:

devinfo.stat.gov.rs/SerbiaProfileLauncher/?lang=en



DevInfo online database:

devinfo.stat.gov.rs/vitalna



For additional information or questions please contact:

devinfo@stat.gov.rs