

Natural changes of population 1961 – 2022

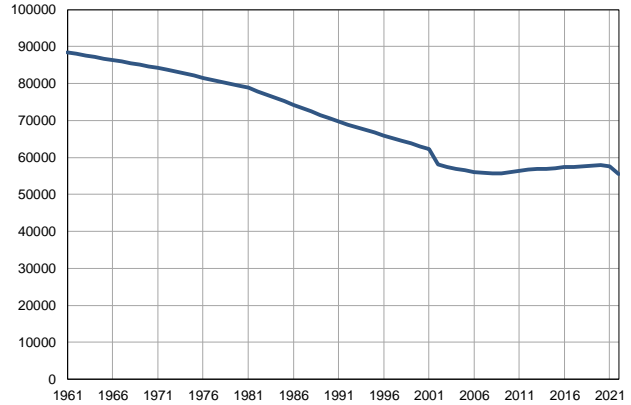
Profile
July 2023

Vračar

	1961	2022
Population size	88422	55477
Livebirths, Number	938	579
Deaths, Number	626	881
Natural increase, Number	312	-302
Infants deaths, Number	26	2
Livebirths, per 1,000 population	11	10
Deaths, per 1,000 population	7	16
Natural increase, per 1,000 population	4	-5
Infants deaths, per 1,000 livebirths	28	4

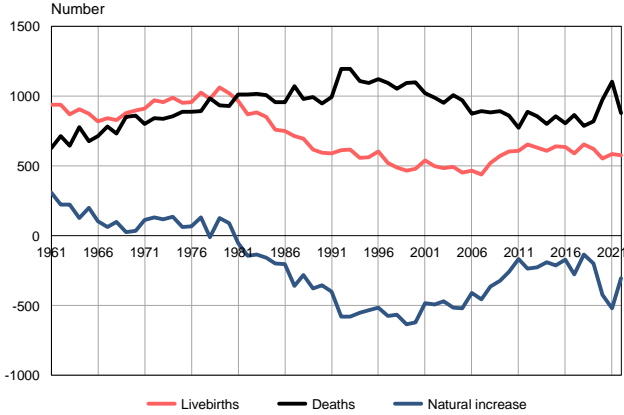
Source: Vital Statistics, SORS

Population size, 1961–2022



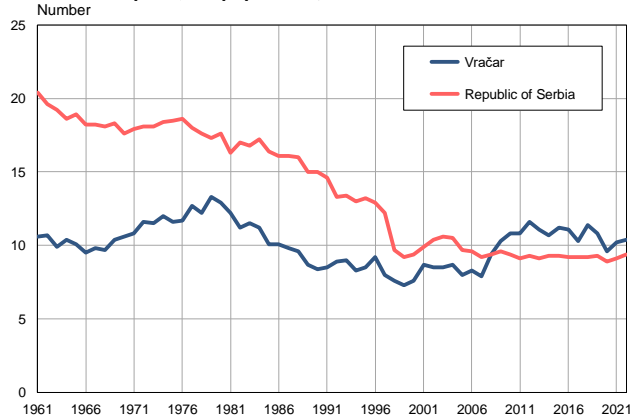
Source: Vital Statistics, SORS

Livebirths, deaths and natural increase, 1961–2022



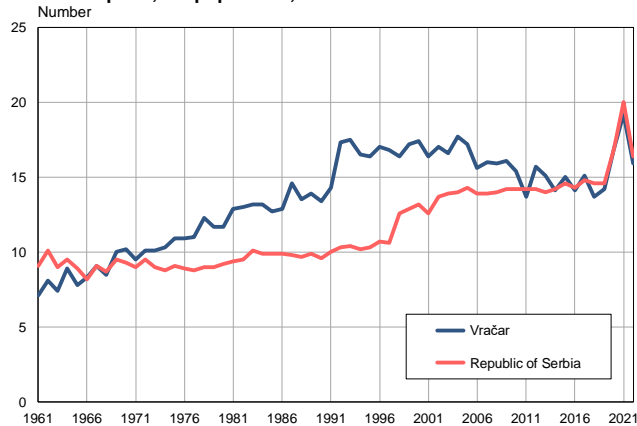
Source: Vital Statistics, SORS

Livebirths per 1,000 population, 1961–2022



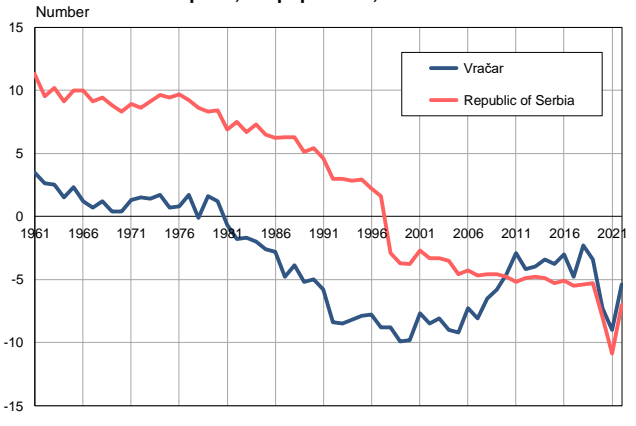
Source: Vital Statistics, SORS

Deaths per 1,000 population, 1961–2022



Source: Vital Statistics, SORS

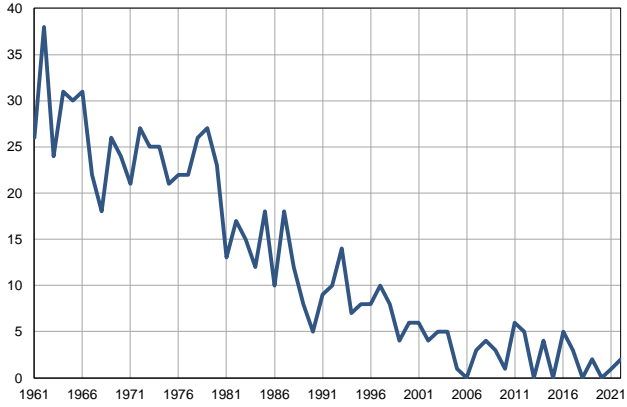
Natural increase per 1,000 population, 1961–2022



Source: Vital Statistics, SORS

Infants deaths, 1961–2022

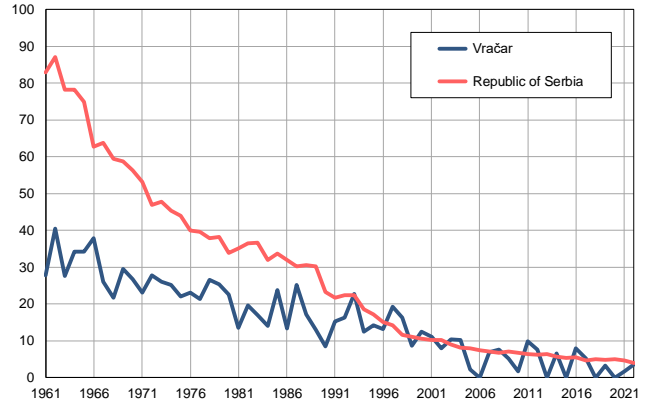
Number



Source: Vital Statistics, SORS

Infants deaths per 1,000 livebirths, 1961–2022

Number



Source: Vital Statistics, SORS

Table. Natural changes of population, Vračar

Year	Number of population	Livebirths	Deaths	Natural increase	Infants deaths	per 1000 population			Infant deaths per 1000 livebirths
						Livebirths	Deaths	Natural increase	
1961	88422	938	626	312	26	10.6	7.1	3.5	27.7
1962	88009	940	715	225	38	10.7	8.1	2.6	40.4
1963	87596	870	646	224	24	9.9	7.4	2.5	27.6
1964	87183	906	777	129	31	10.4	8.9	1.5	34.2
1965	86770	876	676	200	30	10.1	7.8	2.3	34.2
1966	86356	818	714	104	31	9.5	8.3	1.2	37.9
1967	85943	844	783	61	22	9.8	9.1	0.7	26.1
1968	85530	830	731	99	18	9.7	8.5	1.2	21.7
1969	85117	881	854	27	26	10.4	10.0	0.4	29.5
1970	84704	897	863	34	24	10.6	10.2	0.4	26.8
1971	84291	914	800	114	21	10.8	9.5	1.3	23.0
1972	83748	972	842	130	27	11.6	10.1	1.5	27.8
1973	83205	959	839	120	25	11.5	10.1	1.4	26.1
1974	82662	991	855	136	25	12.0	10.3	1.7	25.2
1975	82119	955	891	64	21	11.6	10.9	0.7	22.0
1976	81576	957	889	68	22	11.7	10.9	0.8	23.0
1977	81034	1027	895	132	22	12.7	11.0	1.7	21.4
1978	80491	979	987	-8	26	12.2	12.3	-0.1	26.6
1979	79948	1061	934	127	27	13.3	11.7	1.6	25.4
1980	79404	1022	929	93	23	12.9	11.7	1.2	22.5
1981	78862	965	1015	-50	13	12.2	12.9	-0.7	13.5
1982	77944	871	1015	-144	17	11.2	13.0	-1.8	19.5
1983	77026	885	1018	-133	15	11.5	13.2	-1.7	16.9
1984	76107	850	1007	-157	12	11.2	13.2	-2.0	14.1
1985	75189	760	957	-197	18	10.1	12.7	-2.6	23.7
1986	74271	752	957	-205	10	10.1	12.9	-2.8	13.3
1987	73353	716	1074	-358	18	9.8	14.6	-4.8	25.1
1988	72435	696	979	-283	12	9.6	13.5	-3.9	17.2
1989	71516	619	995	-376	8	8.7	13.9	-5.2	12.9
1990	70598	595	948	-353	5	8.4	13.4	-5.0	8.4
1991	69680	593	994	-401	9	8.5	14.3	-5.8	15.2
1992	68943	615	1195	-580	10	8.9	17.3	-8.4	16.3
1993	68207	617	1197	-580	14	9.0	17.5	-8.5	22.7
1994	67470	559	1110	-551	7	8.3	16.5	-8.2	12.5
1995	66733	564	1097	-533	8	8.5	16.4	-7.9	14.2
1996	65996	606	1121	-515	8	9.2	17.0	-7.8	13.2
1997	65260	520	1094	-574	10	8.0	16.8	-8.8	19.2
1998	64523	491	1055	-564	8	7.6	16.4	-8.8	16.3
1999	63786	465	1097	-632	4	7.3	17.2	-9.9	8.6
2000	63049	480	1098	-618	6	7.6	17.4	-9.8	12.5
2001	62313	541	1024	-483	6	8.7	16.4	-7.7	11.1
2002	58166	497	990	-493	4	8.5	17.0	-8.5	8.0
2003	57365	485	954	-469	5	8.5	16.6	-8.1	10.3
2004	56923	496	1010	-514	5	8.7	17.7	-9.0	10.1
2005	56499	453	970	-517	1	8.0	17.2	-9.2	2.2

Table. Natural changes of population, Vračar

Year	Number of population	Livebirths	Deaths	Natural increase	Infants deaths	per 1000 population			Infant deaths per 1000 livebirths
						Livebirths	Deaths	Natural increase	
2006	56053	466	876	-410	0	8.3	15.6	-7.3	0.0
2007	55880	439	893	-454	3	7.9	16.0	-8.1	6.8
2008	55767	524	885	-361	4	9.4	15.9	-6.5	7.6
2009	55761	573	895	-322	3	10.3	16.1	-5.8	5.2
2010	55962	603	862	-259	1	10.8	15.4	-4.6	1.7
2011	56417	607	772	-165	6	10.8	13.7	-2.9	9.9
2012	56698	655	891	-236	5	11.6	15.7	-4.2	7.6
2013	56854	632	858	-226	0	11.1	15.1	-4.0	0.0
2014	56922	611	802	-191	4	10.7	14.1	-3.4	6.5
2015	57130	642	856	-214	0	11.2	15.0	-3.8	0.0
2016	57343	635	806	-171	5	11.1	14.1	-3.0	7.9
2017	57483	591	868	-277	3	10.3	15.1	-4.8	5.1
2018	57607	657	789	-132	0	11.4	13.7	-2.3	0.0
2019	57856	625	822	-197	2	10.8	14.2	-3.4	3.2
2020	57962	554	977	-423	0	9.6	16.9	-7.3	0.0
2021	57563	586	1104	-518	1	10.2	19.2	-9.0	1.7
2022	55477	579	881	-302	2	10.4	15.9	-5.4	3.5

Source: Vital Statistics, SORS

Definitions

Population size

Number of population in the respective year. The data on the number of population in 1961, 1971, 1981 and 1991 are census data, while for the inter-census years the number of population was calculated as an average inter-census difference. From 2002 are given the population estimates that were calculated according to the census of population results and the annual statistics of natural mechanical population movements.

Livebirths

Absolute number of live births in the course of a year. Live born child means a child giving vital signs after birth (breathing, i.e. heartbeat), even for the shortest time, regardless the mother's pregnancy duration.

Deaths

Absolute number of deaths in the course of a year. Deceased is a person that whenever after having been born live, shows permanently stopped vital signs.

Natural increase

Natural population increase is the number of live births minus the number of deaths.

Infants deaths

Absolute number of infants deaths in the course of a year. Deceased infant is a child that after having been born live and before aged one year, shows permanently stopped vital signs.

Livebirths, per 1 000 population

Livebirths rate is the ratio of the number of live births and the population size in the respective year. The number of live births is divided by the population size and then multiplied by 1000.

Deaths, per 1 000 population

General mortality rate represents the ratio between the number of deaths and the population size in the respective year. The number of deaths is divided by population size and then multiplied by 1000.

Natural increase, per 1 000 population

Natural population increase rate is the difference between the number of live births and the number of deaths, in relation to the population size in the respective year.

Natural population increase rate = (number of live births - number of deaths) / population size * 1000

Infants deaths, per 1 000 livebirths

Infant mortality rate is the ratio of deceased children under 1 year of age and live births in the respective year. The mortality rate is expressed per 1000 live births.

Infant mortality rate = (number of deceased children under 1 year of age / number of live births) * 1000

Additional info:



Download all database data in Excel format:

[Data](#)



DevInfo profiles:

devinfo.stat.gov.rs/SerbiaProfileLauncher/?lang=en



DevInfo online database:

devinfo.stat.gov.rs/vitalna



For additional information or questions please contact:

devinfo@stat.gov.rs