

Natural changes of population 1961 – 2022

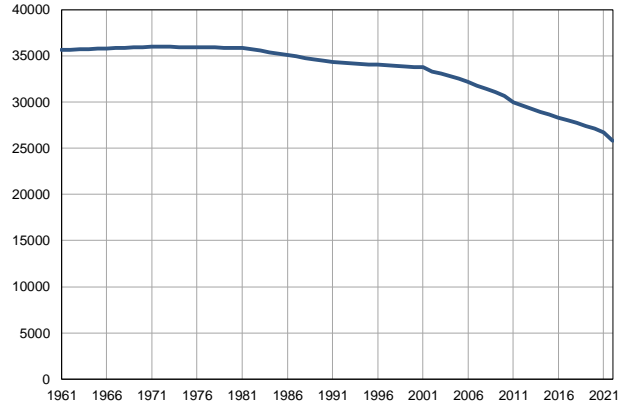
Profile
July 2023

Vlasotince

	1961	2022
Population size	35625	25803
Livebirths, Number	757	194
Deaths, Number	277	462
Natural increase, Number	480	-268
Infants deaths, Number	69	1
Livebirths, per 1,000 population	21	8
Deaths, per 1,000 population	8	18
Natural increase, per 1,000 population	13	-10
Infants deaths, per 1,000 livebirths	91	5

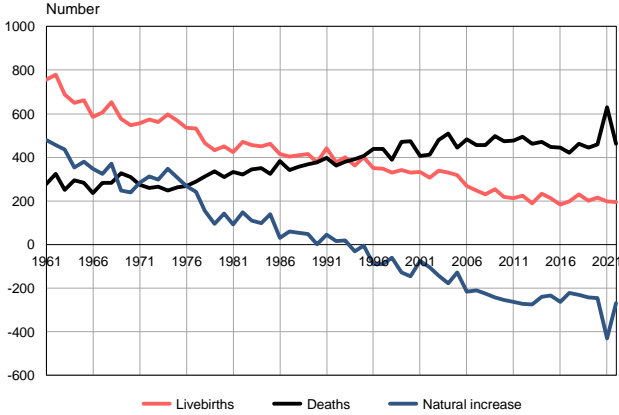
Source: Vital Statistics, SORS

Population size, 1961–2022



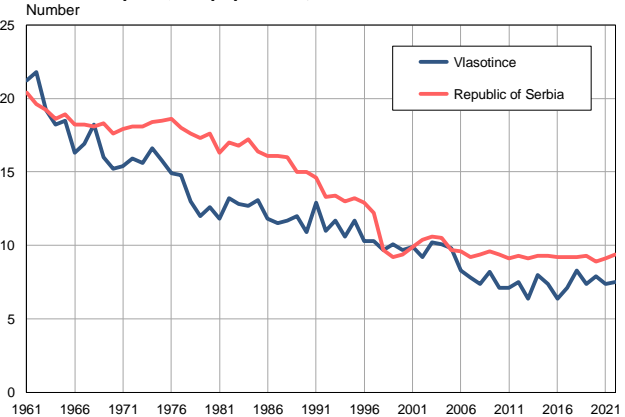
Source: Vital Statistics, SORS

Livebirths, deaths and natural increase, 1961–2022



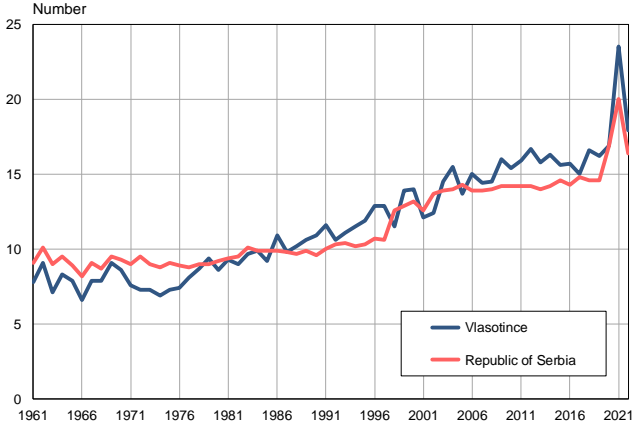
Source: Vital Statistics, SORS

Livebirths per 1,000 population, 1961–2022



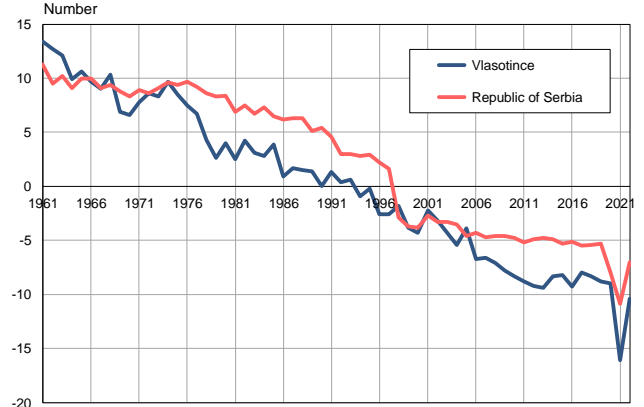
Source: Vital Statistics, SORS

Deaths per 1,000 population, 1961–2022



Source: Vital Statistics, SORS

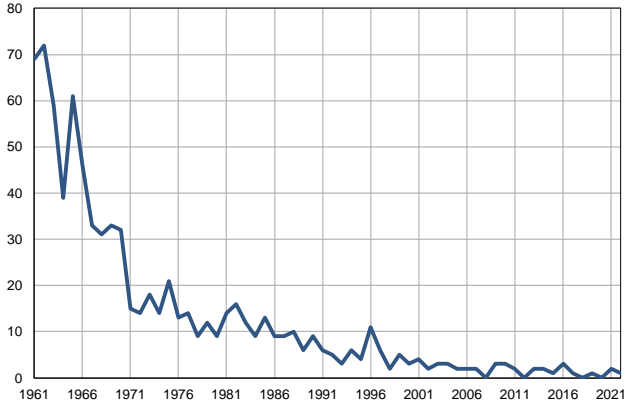
Natural increase per 1,000 population, 1961–2022



Source: Vital Statistics, SORS

Infants deaths, 1961–2022

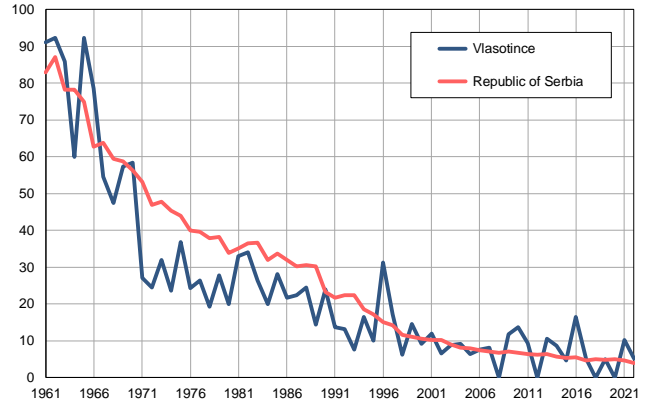
Number



Source: Vital Statistics, SORS

Infants deaths per 1,000 livebirths, 1961–2022

Number



Source: Vital Statistics, SORS

Table. Natural changes of population, Vlasotince

Year	Number of population	Livebirths	Deaths	Natural increase	Infants deaths	per 1000 population			Infant deaths per 1000 livebirths
						Livebirths	Deaths	Natural increase	
1961	35625	757	277	480	69	21.2	7.8	13.4	91.1
1962	35663	779	324	455	72	21.8	9.1	12.7	92.4
1963	35700	687	252	435	59	19.2	7.1	12.1	85.9
1964	35738	650	296	354	39	18.2	8.3	9.9	60.0
1965	35776	661	282	379	61	18.5	7.9	10.6	92.3
1966	35813	585	236	349	46	16.3	6.6	9.7	78.6
1967	35851	606	283	323	33	16.9	7.9	9.0	54.5
1968	35889	653	283	370	31	18.2	7.9	10.3	47.5
1969	35927	576	328	248	33	16.0	9.1	6.9	57.3
1970	35964	548	309	239	32	15.2	8.6	6.6	58.4
1971	36002	555	273	282	15	15.4	7.6	7.8	27.0
1972	35988	574	261	313	14	15.9	7.3	8.6	24.4
1973	35974	562	264	298	18	15.6	7.3	8.3	32.0
1974	35960	596	247	349	14	16.6	6.9	9.7	23.5
1975	35946	569	263	306	21	15.8	7.3	8.5	36.9
1976	35933	536	267	269	13	14.9	7.4	7.5	24.3
1977	35919	532	290	242	14	14.8	8.1	6.7	26.3
1978	35904	466	312	154	9	13.0	8.7	4.3	19.3
1979	35891	432	337	95	12	12.0	9.4	2.6	27.8
1980	35877	451	309	142	9	12.6	8.6	4.0	20.0
1981	35863	424	333	91	14	11.8	9.3	2.5	33.0
1982	35707	470	321	149	16	13.2	9.0	4.2	34.0
1983	35551	456	345	111	12	12.8	9.7	3.1	26.3
1984	35394	450	352	98	9	12.7	9.9	2.8	20.0
1985	35239	463	323	140	13	13.1	9.2	3.9	28.1
1986	35082	415	384	31	9	11.8	10.9	0.9	21.7
1987	34926	403	342	61	9	11.5	9.8	1.7	22.3
1988	34770	408	355	53	10	11.7	10.2	1.5	24.5
1989	34614	416	368	48	6	12.0	10.6	1.4	14.4
1990	34458	377	377	0	9	10.9	10.9	0.0	23.9
1991	34302	441	397	44	6	12.9	11.6	1.3	13.6
1992	34248	378	362	16	5	11.0	10.6	0.4	13.2
1993	34193	400	381	19	3	11.7	11.1	0.6	7.5
1994	34139	363	393	-30	6	10.6	11.5	-0.9	16.5
1995	34085	400	406	-6	4	11.7	11.9	-0.2	10.0
1996	34030	351	440	-89	11	10.3	12.9	-2.6	31.3
1997	33976	349	438	-89	6	10.3	12.9	-2.6	17.2
1998	33921	329	389	-60	2	9.7	11.5	-1.8	6.1
1999	33867	342	471	-129	5	10.1	13.9	-3.8	14.6
2000	33813	329	475	-146	3	9.7	14.0	-4.3	9.1
2001	33758	333	407	-74	4	9.9	12.1	-2.2	12.0
2002	33274	307	411	-104	2	9.2	12.4	-3.2	6.5
2003	33079	339	481	-142	3	10.2	14.5	-4.3	8.8
2004	32822	331	508	-177	3	10.1	15.5	-5.4	9.1
2005	32518	318	445	-127	2	9.8	13.7	-3.9	6.3

Table. Natural changes of population, Vlasotince

Year	Number of population	Livebirths	Deaths	Natural increase	Infants deaths	per 1000 population			Infant deaths per 1000 livebirths
						Livebirths	Deaths	Natural increase	
2006	32163	267	483	-216	2	8.3	15.0	-6.7	7.5
2007	31762	248	457	-209	2	7.8	14.4	-6.6	8.1
2008	31395	231	456	-225	0	7.4	14.5	-7.1	0.0
2009	31050	254	496	-242	3	8.2	16.0	-7.8	11.8
2010	30695	219	474	-255	3	7.1	15.4	-8.3	13.7
2011	29957	213	476	-263	2	7.1	15.9	-8.8	9.4
2012	29594	223	494	-271	0	7.5	16.7	-9.2	0.0
2013	29256	188	462	-274	2	6.4	15.8	-9.4	10.6
2014	28948	232	471	-239	2	8.0	16.3	-8.3	8.6
2015	28631	213	448	-235	1	7.4	15.6	-8.2	4.7
2016	28327	182	445	-263	3	6.4	15.7	-9.3	16.5
2017	28029	198	421	-223	1	7.1	15.0	-8.0	5.1
2018	27718	231	461	-230	0	8.3	16.6	-8.3	0.0
2019	27402	202	445	-243	1	7.4	16.2	-8.8	5.0
2020	27101	215	459	-244	0	7.9	16.9	-9.0	0.0
2021	26723	198	628	-430	2	7.4	23.5	-16.1	10.1
2022	25803	194	462	-268	1	7.5	17.9	-10.4	5.2

Source: Vital Statistics, SORS

Definitions

Population size

Number of population in the respective year. The data on the number of population in 1961, 1971, 1981 and 1991 are census data, while for the inter-census years the number of population was calculated as an average inter-census difference. From 2002 are given the population estimates that were calculated according to the census of population results and the annual statistics of natural mechanical population movements.

Livebirths

Absolute number of live births in the course of a year. Live born child means a child giving vital signs after birth (breathing, i.e. heartbeat), even for the shortest time, regardless the mother's pregnancy duration.

Deaths

Absolute number of deaths in the course of a year. Deceased is a person that whenever after having been born live, shows permanently stopped vital signs.

Natural increase

Natural population increase is the number of live births minus the number of deaths.

Infants deaths

Absolute number of infants deaths in the course of a year. Deceased infant is a child that after having been born live and before aged one year, shows permanently stopped vital signs.

Livebirths, per 1 000 population

Livebirths rate is the ratio of the number of live births and the population size in the respective year. The number of live births is divided by the population size and then multiplied by 1000.

Deaths, per 1 000 population

General mortality rate represents the ratio between the number of deaths and the population size in the respective year. The number of deaths is divided by population size and then multiplied by 1000.

Natural increase, per 1 000 population

Natural population increase rate is the difference between the number of live births and the number of deaths, in relation to the population size in the respective year.

Natural population increase rate = (number of live births - number of deaths) / population size * 1000

Infants deaths, per 1 000 livebirths

Infant mortality rate is the ratio of deceased children under 1 year of age and live births in the respective year. The mortality rate is expressed per 1000 live births.

Infant mortality rate = (number of deceased children under 1 year of age / number of live births) * 1000

Additional info:



Download all database data in Excel format:

[Data](#)



DevInfo profiles:

devinfo.stat.gov.rs/SerbiaProfileLauncher/?lang=en



DevInfo online database:

devinfo.stat.gov.rs/vitalna



For additional information or questions please contact:

devinfo@stat.gov.rs