

## Natural changes of population 1961 – 2020

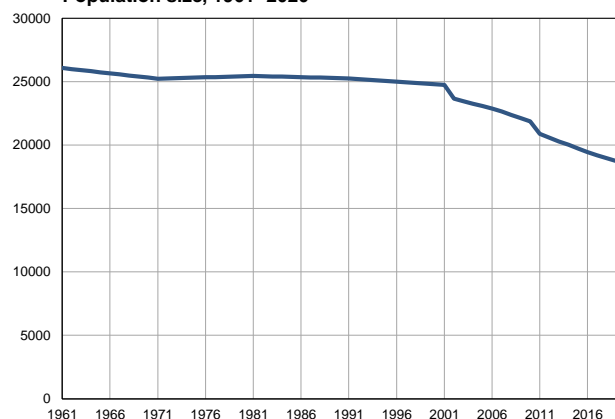
Profile  
July 2021

### Vladičin Han

	1961	2020
Population size	26074	18472
Livebirths, Number	515	152
Deaths, Number	247	341
Natural increase, Number	268	-189
Infants deaths, Number	38	3
Livebirths, per 1,000 population	20	8
Deaths, per 1,000 population	10	19
Natural increase, per 1,000 population	10	-10
Infants deaths, per 1,000 livebirths	74	20

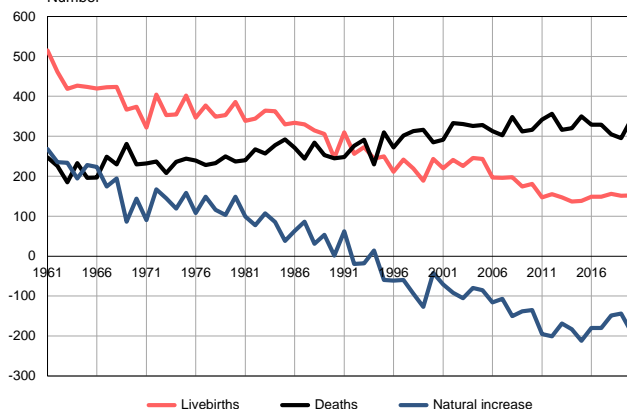
Source: Vital Statistics, SORS

Population size, 1961–2020



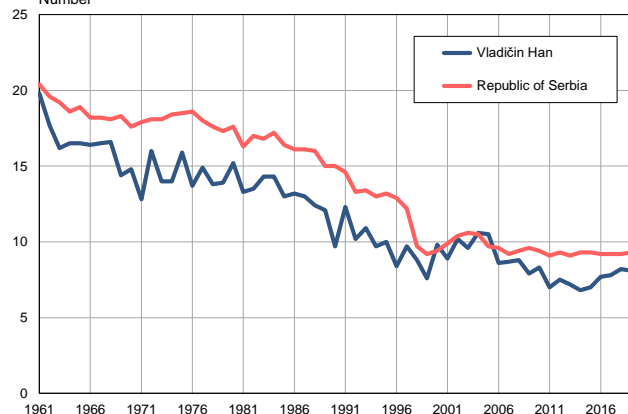
Source: Vital Statistics, SORS

Livebirths, deaths and natural increase, 1961–2020  
Number



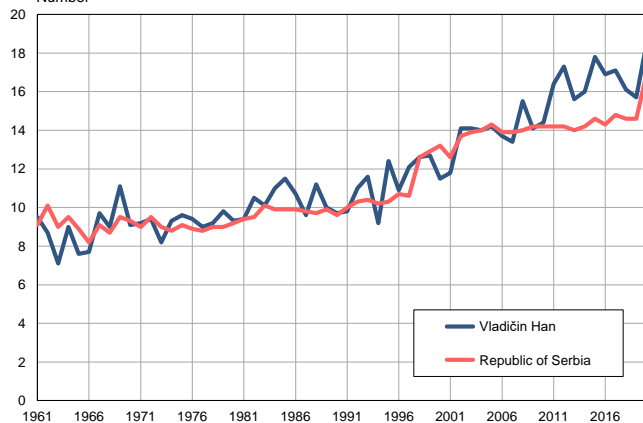
Source: Vital Statistics, SORS

Livebirths per 1,000 population, 1961–2020  
Number



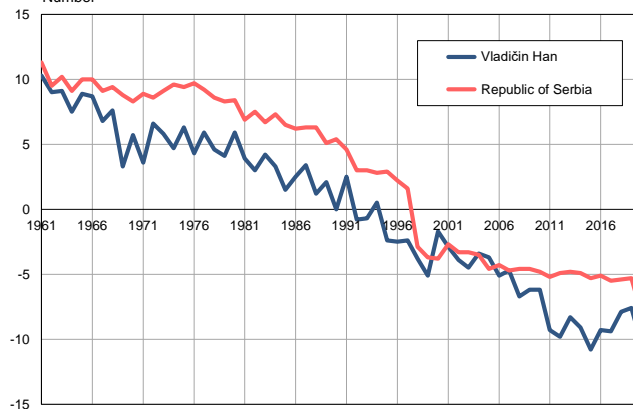
Source: Vital Statistics, SORS

Deaths per 1,000 population, 1961–2020  
Number



Source: Vital Statistics, SORS

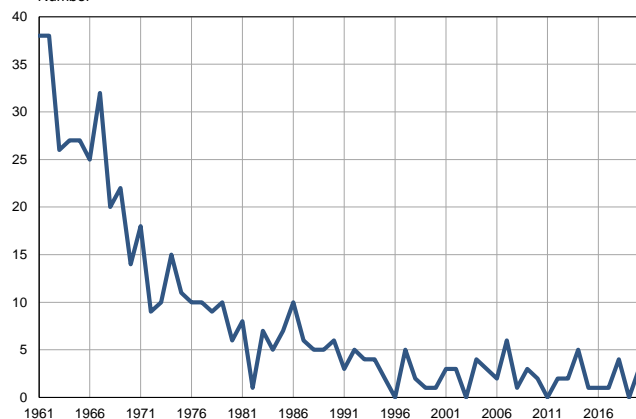
Natural increase per 1,000 population, 1961–2020  
Number



Source: Vital Statistics, SORS

**Infants deaths, 1961–2020**

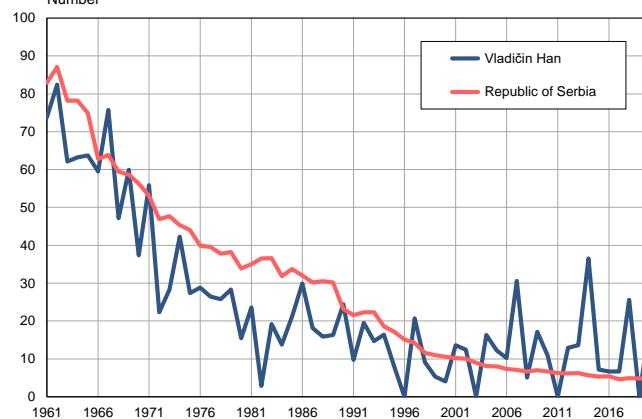
Number



Source: Vital Statistics, SORS

**Infants deaths per 1,000 livebirths, 1961–2020**

Number



Source: Vital Statistics, SORS

**Table. Natural changes of population, Vladačin Han**

Year	Number of population	Livebirths	Deaths	Natural increase	Infants deaths	per 1000 population			Infant deaths per 1000 livebirths
						Livebirths	Deaths	Natural increase	
1961	26074	515	247	268	38	19.8	9.5	10.3	73.8
1962	25990	461	226	235	38	17.7	8.7	9.0	82.4
1963	25905	419	185	234	26	16.2	7.1	9.1	62.1
1964	25821	427	233	194	27	16.5	9.0	7.5	63.2
1965	25737	424	196	228	27	16.5	7.6	8.9	63.7
1966	25653	420	197	223	25	16.4	7.7	8.7	59.5
1967	25568	423	249	174	32	16.5	9.7	6.8	75.7
1968	25484	424	230	194	20	16.6	9.0	7.6	47.2
1969	25400	367	281	86	22	14.4	11.1	3.3	59.9
1970	25315	374	230	144	14	14.8	9.1	5.7	37.4
1971	25231	322	232	90	18	12.8	9.2	3.6	55.9
1972	25252	404	237	167	9	16.0	9.4	6.6	22.3
1973	25273	353	208	145	10	14.0	8.2	5.8	28.3
1974	25294	355	236	119	15	14.0	9.3	4.7	42.3
1975	25315	402	244	158	11	15.9	9.6	6.3	27.4
1976	25336	347	239	108	10	13.7	9.4	4.3	28.8
1977	25357	377	228	149	10	14.9	9.0	5.9	26.5
1978	25378	349	233	116	9	13.8	9.2	4.6	25.8
1979	25399	353	250	103	10	13.9	9.8	4.1	28.3
1980	25420	386	237	149	6	15.2	9.3	5.9	15.5
1981	25441	339	240	99	8	13.3	9.4	3.9	23.6
1982	25422	344	267	77	1	13.5	10.5	3.0	2.9
1983	25404	364	257	107	7	14.3	10.1	4.2	19.2
1984	25385	363	278	85	5	14.3	11.0	3.3	13.8
1985	25367	330	292	38	7	13.0	11.5	1.5	21.2
1986	25347	334	271	63	10	13.2	10.7	2.5	29.9
1987	25329	330	244	86	6	13.0	9.6	3.4	18.2
1988	25311	315	284	31	5	12.4	11.2	1.2	15.9
1989	25293	306	253	53	5	12.1	10.0	2.1	16.3
1990	25274	246	245	1	6	9.7	9.7	0.0	24.4
1991	25255	310	248	62	3	12.3	9.8	2.5	9.7
1992	25205	256	276	-20	5	10.2	11.0	-0.8	19.5
1993	25155	273	291	-18	4	10.9	11.6	-0.7	14.7
1994	25104	244	230	14	4	9.7	9.2	0.5	16.4
1995	25054	250	310	-60	2	10.0	12.4	-2.4	8.0
1996	25004	211	272	-61	0	8.4	10.9	-2.5	0.0
1997	24954	242	302	-60	5	9.7	12.1	-2.4	20.7
1998	24904	219	313	-94	2	8.8	12.6	-3.8	9.1
1999	24854	189	316	-127	1	7.6	12.7	-5.1	5.3
2000	24803	243	285	-42	1	9.8	11.5	-1.7	4.1
2001	24753	220	291	-71	3	8.9	11.8	-2.9	13.6
2002	23647	241	333	-92	3	10.2	14.1	-3.9	12.4
2003	23453	226	331	-105	0	9.6	14.1	-4.5	0.0
2004	23265	246	326	-80	4	10.6	14.0	-3.4	16.3
2005	23079	243	328	-85	3	10.5	14.2	-3.7	12.3

**Table. Natural changes of population, Vladačin Han**

Year	Number of population	Livebirths	Deaths	Natural increase	Infants deaths	per 1000 population			Infant deaths per 1000 livebirths
						Livebirths	Deaths	Natural increase	
2006	22872	197	313	-116	2	8.6	13.7	-5.1	10.2
2007	22639	196	303	-107	6	8.7	13.4	-4.7	30.6
2008	22380	198	348	-150	1	8.8	15.5	-6.7	5.1
2009	22117	174	312	-138	3	7.9	14.1	-6.2	17.2
2010	21868	181	316	-135	2	8.3	14.4	-6.2	11.0
2011	20889	147	342	-195	0	7.0	16.4	-9.3	0.0
2012	20587	155	356	-201	2	7.5	17.3	-9.8	12.9
2013	20281	147	316	-169	2	7.2	15.6	-8.3	13.6
2014	20012	137	320	-183	5	6.8	16.0	-9.1	36.5
2015	19718	138	350	-212	1	7.0	17.8	-10.8	7.2
2016	19443	149	329	-180	1	7.7	16.9	-9.3	6.7
2017	19201	149	329	-180	1	7.8	17.1	-9.4	6.7
2018	18967	156	305	-149	4	8.2	16.1	-7.9	25.6
2019	18738	151	295	-144	0	8.1	15.7	-7.6	0.0
2020	18472	152	341	-189	3	8.2	18.5	-10.3	19.7

Source: Vital Statistics, SORS

## Definitions

### Population size

Number of population in the respective year. The data on the number of population in 1961, 1971, 1981 and 1991 are census data, while for the inter-census years the number of population was calculated as an average inter-census difference. From 2002 are given the population estimates that were calculated according to the census of population results and the annual statistics of natural mechanical population movements.

### Livebirths

Absolute number of live births in the course of a year. Live born child means a child giving vital signs after birth (breathing, i.e. heartbeat), even for the shortest time, regardless the mother's pregnancy duration.

### Deaths

Absolute number of deaths in the course of a year. Deceased is a person that whenever after having been born live, shows permanently stopped vital signs.

### Natural increase

Natural population increase is the number of live births minus the number of deaths.

### Infants deaths

Absolute number of infants deaths in the course of a year. Deceased infant is a child that after having been born live and before aged one year, shows permanently stopped vital signs.

### Livebirths, per 1 000 population

Livebirths rate is the ratio of the number of live births and the population size in the respective year. The number of live births is divided by the population size and then multiplied by 1000.

### Deaths, per 1 000 population

General mortality rate represents the ratio between the number of deaths and the population size in the respective year. The number of deaths is divided by population size and then multiplied by 1000.

### Natural increase, per 1 000 population

Natural population increase rate is the difference between the number of live births and the number of deaths, in relation to the population size in the respective year.

Natural population increase rate = (number of live births - number of deaths) / population size \* 1000

### Infants deaths, per 1 000 livebirths

Infant mortality rate is the ratio of deceased children under 1 year of age and live births in the respective year. The mortality rate is expressed per 1000 live births.

Infant mortality rate = (number of deceased children under 1 year of age / number of live births) \* 1000

## Additional info:



Download all database data in Excel format:

[Data](#)



DevInfo profiles:

[devinfo.stat.gov.rs/SerbiaProfileLauncher/?lang=en](http://devinfo.stat.gov.rs/SerbiaProfileLauncher/?lang=en)



DevInfo online database:

[devinfo.stat.gov.rs/vitalna](http://devinfo.stat.gov.rs/vitalna)



For additional information or questions please contact:

[devinfo@stat.gov.rs](mailto:devinfo@stat.gov.rs)