

Natural changes of population 1961 – 2022

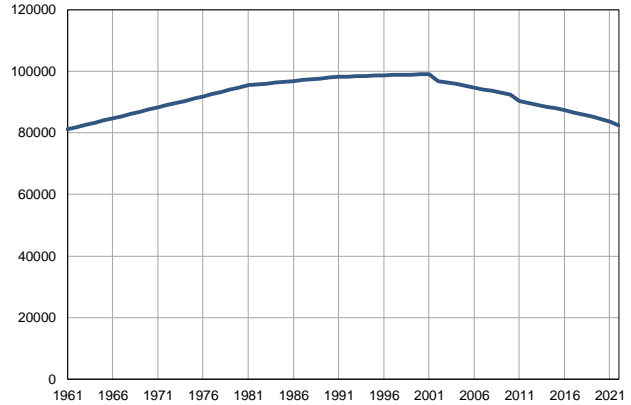
Profile
July 2023

Valjevo

	1961	2022
Population size	81173	82413
Livebirths, Number	1437	758
Deaths, Number	620	1500
Natural increase, Number	817	-742
Infants deaths, Number	75	1
Livebirths, per 1,000 population	18	9
Deaths, per 1,000 population	8	18
Natural increase, per 1,000 population	10	-9
Infants deaths, per 1,000 livebirths	52	1

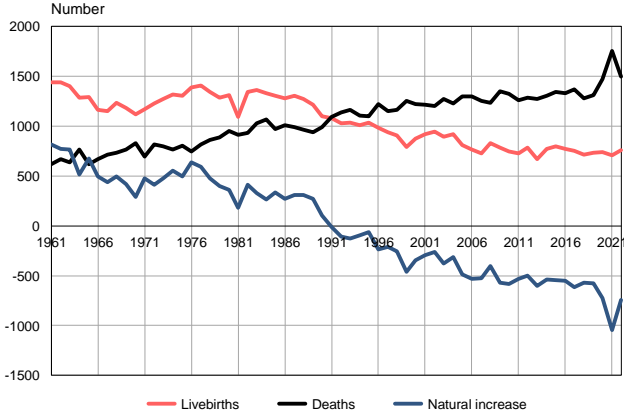
Source: Vital Statistics, SORS

Population size, 1961–2022



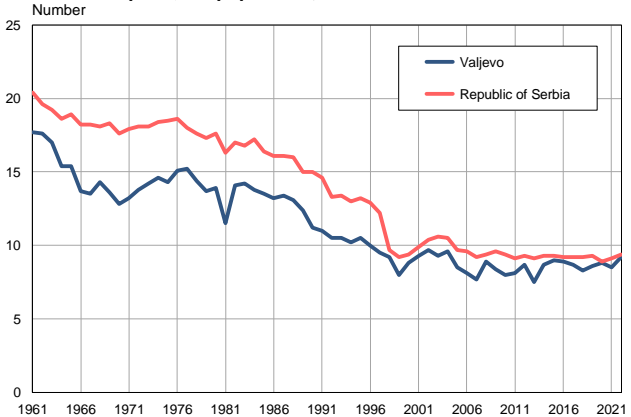
Source: Vital Statistics, SORS

Livebirths, deaths and natural increase, 1961–2022



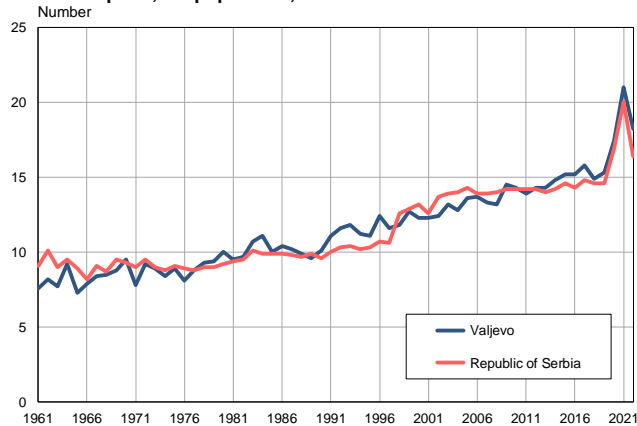
Source: Vital Statistics, SORS

Livebirths per 1,000 population, 1961–2022



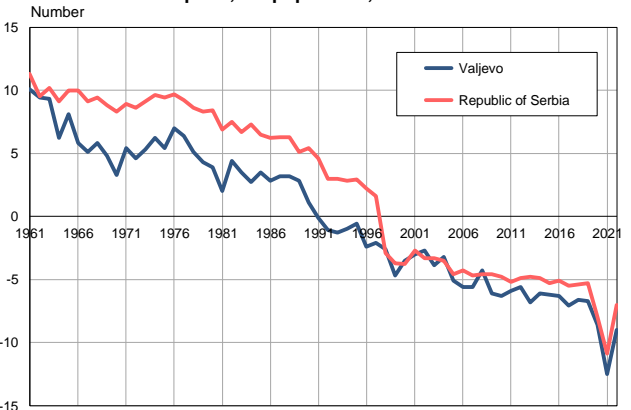
Source: Vital Statistics, SORS

Deaths per 1,000 population, 1961–2022



Source: Vital Statistics, SORS

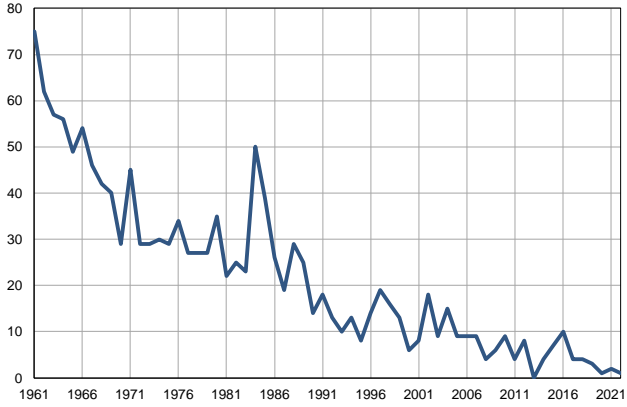
Natural increase per 1,000 population, 1961–2022



Source: Vital Statistics, SORS

Infants deaths, 1961–2022

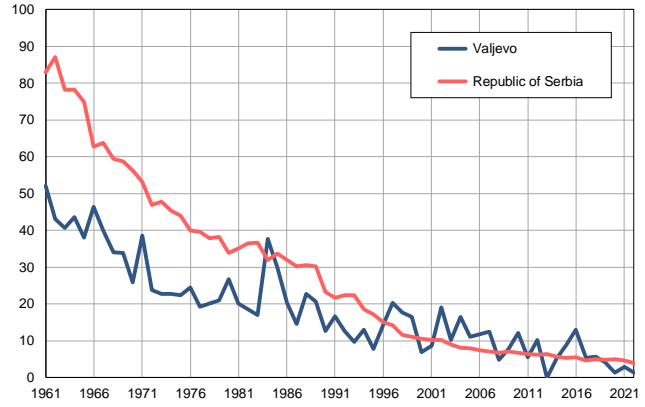
Number



Source: Vital Statistics, SORS

Infants deaths per 1,000 livebirths, 1961–2022

Number



Source: Vital Statistics, SORS

Table. Natural changes of population, Valjevo

Year	Number of population	Livebirths	Deaths	Natural increase	Infants deaths	per 1000 population			Infant deaths per 1000 livebirths
						Livebirths	Deaths	Natural increase	
1961	81173	1437	620	817	75	17.7	7.6	10.1	52.2
1962	81882	1442	670	772	62	17.6	8.2	9.4	43.0
1963	82592	1403	635	768	57	17.0	7.7	9.3	40.6
1964	83301	1285	768	517	56	15.4	9.2	6.2	43.6
1965	84011	1291	616	675	49	15.4	7.3	8.1	38.0
1966	84720	1163	669	494	54	13.7	7.9	5.8	46.4
1967	85429	1154	714	440	46	13.5	8.4	5.1	39.9
1968	86138	1233	736	497	42	14.3	8.5	5.8	34.1
1969	86848	1185	768	417	40	13.6	8.8	4.8	33.8
1970	87557	1121	832	289	29	12.8	9.5	3.3	25.9
1971	88267	1168	692	476	45	13.2	7.8	5.4	38.5
1972	88984	1226	815	411	29	13.8	9.2	4.6	23.7
1973	89703	1274	798	476	29	14.2	8.9	5.3	22.8
1974	90422	1317	763	554	30	14.6	8.4	6.2	22.8
1975	91140	1302	807	495	29	14.3	8.9	5.4	22.3
1976	91858	1387	748	639	34	15.1	8.1	7.0	24.5
1977	92576	1407	816	591	27	15.2	8.8	6.4	19.2
1978	93294	1342	865	477	27	14.4	9.3	5.1	20.1
1979	94013	1285	885	400	27	13.7	9.4	4.3	21.0
1980	94731	1313	952	361	35	13.9	10.0	3.9	26.7
1981	95449	1095	911	184	22	11.5	9.5	2.0	20.1
1982	95727	1346	931	415	25	14.1	9.7	4.4	18.6
1983	96004	1360	1032	328	23	14.2	10.7	3.5	16.9
1984	96282	1329	1067	262	50	13.8	11.1	2.7	37.6
1985	96560	1304	970	334	39	13.5	10.0	3.5	29.9
1986	96838	1280	1007	273	26	13.2	10.4	2.8	20.3
1987	97115	1302	992	310	19	13.4	10.2	3.2	14.6
1988	97393	1276	964	312	29	13.1	9.9	3.2	22.7
1989	97671	1214	942	272	25	12.4	9.6	2.8	20.6
1990	97948	1100	993	107	14	11.2	10.1	1.1	12.7
1991	98226	1082	1094	-12	18	11.0	11.1	-0.1	16.6
1992	98315	1032	1137	-105	13	10.5	11.6	-1.1	12.6
1993	98405	1033	1162	-129	10	10.5	11.8	-1.3	9.7
1994	98494	1007	1105	-98	13	10.2	11.2	-1.0	12.9
1995	98583	1033	1098	-65	8	10.5	11.1	-0.6	7.7
1996	98672	986	1224	-238	14	10.0	12.4	-2.4	14.2
1997	98762	942	1150	-208	19	9.5	11.6	-2.1	20.2
1998	98851	910	1165	-255	16	9.2	11.8	-2.6	17.6
1999	98940	793	1254	-461	13	8.0	12.7	-4.7	16.4
2000	99029	874	1222	-348	6	8.8	12.3	-3.5	6.9
2001	99119	921	1215	-294	8	9.3	12.3	-3.0	8.7
2002	96730	943	1204	-261	18	9.7	12.4	-2.7	19.1
2003	96300	893	1271	-378	9	9.3	13.2	-3.9	10.1
2004	95857	917	1228	-311	15	9.6	12.8	-3.2	16.4
2005	95353	812	1298	-486	9	8.5	13.6	-5.1	11.1

Table. Natural changes of population, Valjevo

Year	Number of population	Livebirths	Deaths	Natural increase	Infants deaths	per 1000 population			Infant deaths per 1000 livebirths
						Livebirths	Deaths	Natural increase	
2006	94752	768	1301	-533	9	8.1	13.7	-5.6	11.7
2007	94157	728	1251	-523	9	7.7	13.3	-5.6	12.4
2008	93641	833	1236	-403	4	8.9	13.2	-4.3	4.8
2009	93117	783	1351	-568	6	8.4	14.5	-6.1	7.7
2010	92487	744	1327	-583	9	8.0	14.3	-6.3	12.1
2011	90400	728	1259	-531	4	8.1	13.9	-5.9	5.5
2012	89762	785	1287	-502	8	8.7	14.3	-5.6	10.2
2013	89112	670	1273	-603	0	7.5	14.3	-6.8	0.0
2014	88527	769	1306	-537	4	8.7	14.8	-6.1	5.2
2015	87944	795	1341	-546	7	9.0	15.2	-6.2	8.8
2016	87334	775	1328	-553	10	8.9	15.2	-6.3	12.9
2017	86677	751	1369	-618	4	8.7	15.8	-7.1	5.3
2018	85962	713	1281	-568	4	8.3	14.9	-6.6	5.6
2019	85316	735	1309	-574	3	8.6	15.3	-6.7	4.1
2020	84586	742	1469	-727	1	8.8	17.4	-8.6	1.3
2021	83677	709	1756	-1047	2	8.5	21.0	-12.5	2.8
2022	82413	758	1500	-742	1	9.2	18.2	-9.0	1.3

Source: Vital Statistics, SORS

Definitions

Population size

Number of population in the respective year. The data on the number of population in 1961, 1971, 1981 and 1991 are census data, while for the inter-census years the number of population was calculated as an average inter-census difference. From 2002 are given the population estimates that were calculated according to the census of population results and the annual statistics of natural mechanical population movements.

Livebirths

Absolute number of live births in the course of a year. Live born child means a child giving vital signs after birth (breathing, i.e. heartbeat), even for the shortest time, regardless the mother's pregnancy duration.

Deaths

Absolute number of deaths in the course of a year. Deceased is a person that whenever after having been born live, shows permanently stopped vital signs.

Natural increase

Natural population increase is the number of live births minus the number of deaths.

Infants deaths

Absolute number of infants deaths in the course of a year. Deceased infant is a child that after having been born live and before aged one year, shows permanently stopped vital signs.

Livebirths, per 1 000 population

Livebirths rate is the ratio of the number of live births and the population size in the respective year. The number of live births is divided by the population size and then multiplied by 1000.

Deaths, per 1 000 population

General mortality rate represents the ratio between the number of deaths and the population size in the respective year. The number of deaths is divided by population size and then multiplied by 1000.

Natural increase, per 1 000 population

Natural population increase rate is the difference between the number of live births and the number of deaths, in relation to the population size in the respective year.

Natural population increase rate = (number of live births - number of deaths) / population size * 1000

Infants deaths, per 1 000 livebirths

Infant mortality rate is the ratio of deceased children under 1 year of age and live births in the respective year. The mortality rate is expressed per 1000 live births.

Infant mortality rate = (number of deceased children under 1 year of age / number of live births) * 1000

Additional info:



Download all database data in Excel format:

[Data](#)



DevInfo profiles:

devinfo.stat.gov.rs/SerbiaProfileLauncher/?lang=en



DevInfo online database:

devinfo.stat.gov.rs/vitalna



For additional information or questions please contact:

devinfo@stat.gov.rs