

Natural changes of population 1961 – 2022

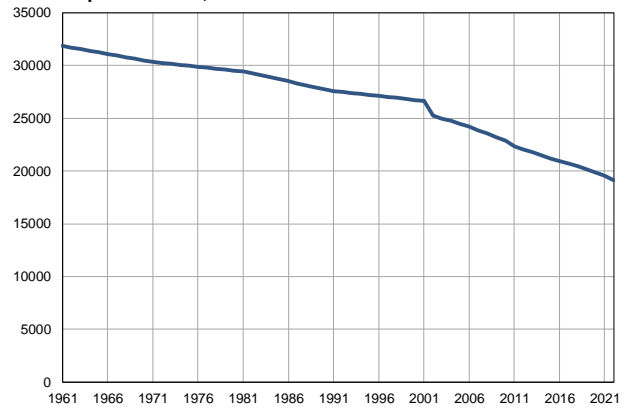
Profile
July 2023

Topola

	1961	2022
Population size	31860	19146
Livebirths, Number	415	99
Deaths, Number	319	319
Natural increase, Number	96	-220
Infants deaths, Number	18	0
Livebirths, per 1,000 population	13	5
Deaths, per 1,000 population	10	17
Natural increase, per 1,000 population	3	-12
Infants deaths, per 1,000 livebirths	43	0

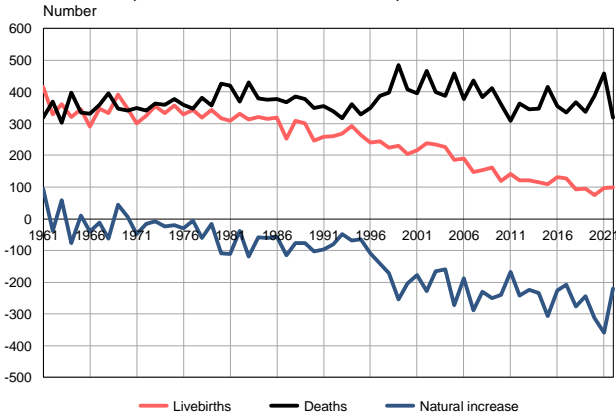
Source: Vital Statistics, SORS

Population size, 1961–2022



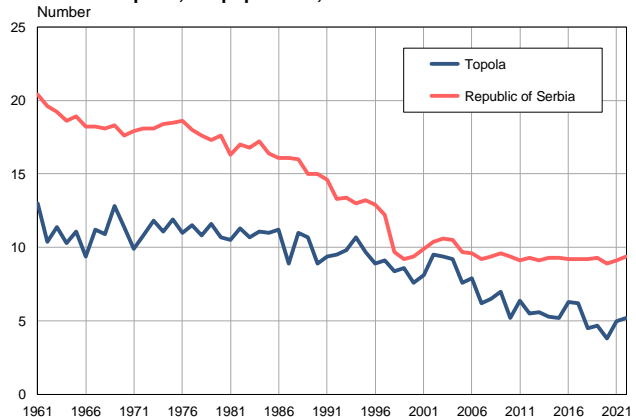
Source: Vital Statistics, SORS

Livebirths, deaths and natural increase, 1961–2022



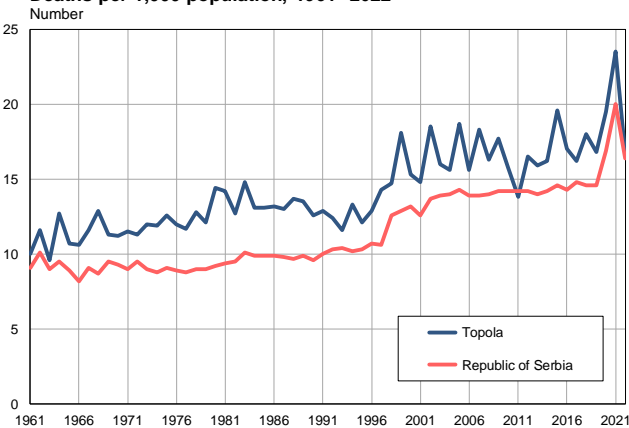
Source: Vital Statistics, SORS

Livebirths per 1,000 population, 1961–2022



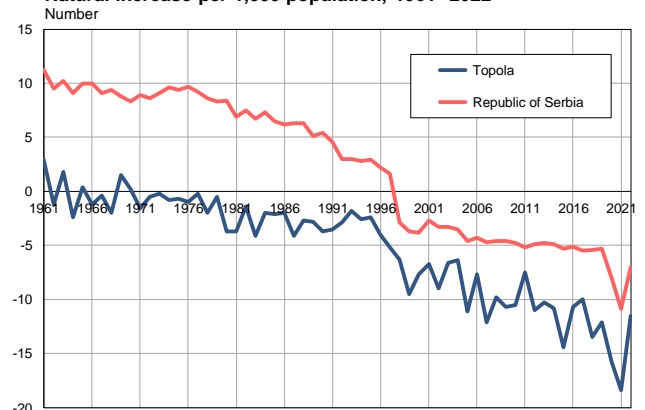
Source: Vital Statistics, SORS

Deaths per 1,000 population, 1961–2022



Source: Vital Statistics, SORS

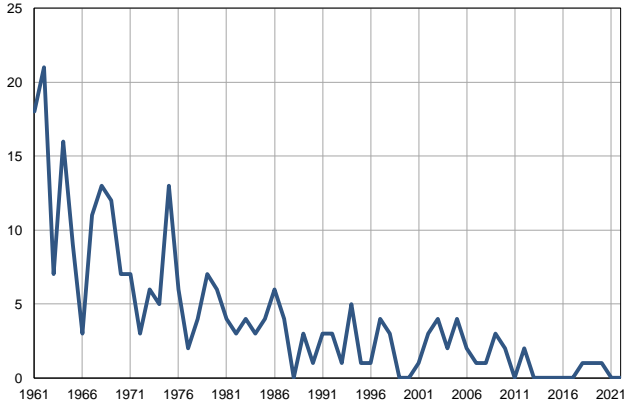
Natural increase per 1,000 population, 1961–2022



Source: Vital Statistics, SORS

Infants deaths, 1961–2022

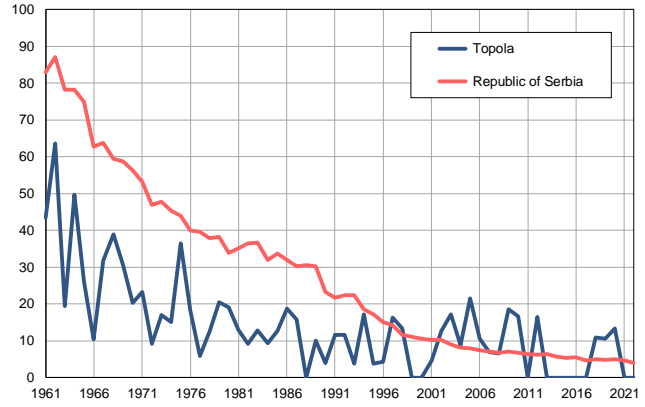
Number



Source: Vital Statistics, SORS

Infants deaths per 1,000 livebirths, 1961–2022

Number



Source: Vital Statistics, SORS

Table. Natural changes of population, Topola

Year	Number of population	Livebirths	Deaths	Natural increase	Infants deaths	per 1000 population			Infant deaths per 1000 livebirths
						Livebirths	Deaths	Natural increase	
1961	31860	415	319	96	18	13.0	10.0	3.0	43.4
1962	31706	330	369	-39	21	10.4	11.6	-1.2	63.6
1963	31552	361	303	58	7	11.4	9.6	1.8	19.4
1964	31399	322	398	-76	16	10.3	12.7	-2.4	49.7
1965	31245	346	335	11	9	11.1	10.7	0.4	26.0
1966	31091	291	331	-40	3	9.4	10.6	-1.2	10.3
1967	30937	347	359	-12	11	11.2	11.6	-0.4	31.7
1968	30783	334	396	-62	13	10.9	12.9	-2.0	38.9
1969	30630	392	347	45	12	12.8	11.3	1.5	30.6
1970	30475	347	341	6	7	11.4	11.2	0.2	20.2
1971	30322	301	350	-49	7	9.9	11.5	-1.6	23.3
1972	30232	326	341	-15	3	10.8	11.3	-0.5	9.2
1973	30141	355	363	-8	6	11.8	12.0	-0.2	16.9
1974	30051	334	359	-25	5	11.1	11.9	-0.8	15.0
1975	29960	357	377	-20	13	11.9	12.6	-0.7	36.4
1976	29870	329	359	-30	6	11.0	12.0	-1.0	18.2
1977	29780	343	348	-5	2	11.5	11.7	-0.2	5.8
1978	29689	320	381	-61	4	10.8	12.8	-2.0	12.5
1979	29599	343	358	-15	7	11.6	12.1	-0.5	20.4
1980	29508	316	425	-109	6	10.7	14.4	-3.7	19.0
1981	29418	309	419	-110	4	10.5	14.2	-3.7	12.9
1982	29234	331	370	-39	3	11.3	12.7	-1.4	9.1
1983	29050	312	430	-118	4	10.7	14.8	-4.1	12.8
1984	28866	321	379	-58	3	11.1	13.1	-2.0	9.3
1985	28682	315	375	-60	4	11.0	13.1	-2.1	12.7
1986	28499	320	377	-57	6	11.2	13.2	-2.0	18.8
1987	28315	253	367	-114	4	8.9	13.0	-4.1	15.8
1988	28131	309	386	-77	0	11.0	13.7	-2.7	0.0
1989	27947	300	377	-77	3	10.7	13.5	-2.8	10.0
1990	27763	247	350	-103	1	8.9	12.6	-3.7	4.0
1991	27579	259	356	-97	3	9.4	12.9	-3.5	11.6
1992	27485	260	340	-80	3	9.5	12.4	-2.9	11.5
1993	27392	269	318	-49	1	9.8	11.6	-1.8	3.7
1994	27298	293	362	-69	5	10.7	13.3	-2.6	17.1
1995	27204	264	329	-65	1	9.7	12.1	-2.4	3.8
1996	27110	240	349	-109	1	8.9	12.9	-4.0	4.2
1997	27017	245	387	-142	4	9.1	14.3	-5.2	16.3
1998	26923	225	397	-172	3	8.4	14.7	-6.3	13.3
1999	26829	230	485	-255	0	8.6	18.1	-9.5	0.0
2000	26735	204	408	-204	0	7.6	15.3	-7.7	0.0
2001	26642	217	395	-178	1	8.1	14.8	-6.7	4.6
2002	25236	239	466	-227	3	9.5	18.5	-9.0	12.6
2003	24969	234	400	-166	4	9.4	16.0	-6.6	17.1
2004	24756	227	387	-160	2	9.2	15.6	-6.4	8.8
2005	24486	186	458	-272	4	7.6	18.7	-11.1	21.5

Table. Natural changes of population, Topola

Year	Number of population	Livebirths	Deaths	Natural increase	Infants deaths	per 1000 population			Infant deaths per 1000 livebirths
						Livebirths	Deaths	Natural increase	
2006	24199	190	377	-187	2	7.9	15.6	-7.7	10.5
2007	23880	148	437	-289	1	6.2	18.3	-12.1	6.8
2008	23532	154	384	-230	1	6.5	16.3	-9.8	6.5
2009	23217	162	412	-250	3	7.0	17.7	-10.7	18.5
2010	22899	120	361	-241	2	5.2	15.8	-10.5	16.7
2011	22333	142	309	-167	0	6.4	13.8	-7.5	0.0
2012	22065	121	363	-242	2	5.5	16.5	-11.0	16.5
2013	21778	122	346	-224	0	5.6	15.9	-10.3	0.0
2014	21506	115	348	-233	0	5.3	16.2	-10.8	0.0
2015	21211	110	416	-306	0	5.2	19.6	-14.4	0.0
2016	20939	131	356	-225	0	6.3	17.0	-10.7	0.0
2017	20720	128	335	-207	0	6.2	16.2	-10.0	0.0
2018	20445	92	368	-276	1	4.5	18.0	-13.5	10.9
2019	20144	94	338	-244	1	4.7	16.8	-12.1	10.6
2020	19858	75	387	-312	1	3.8	19.5	-15.7	13.3
2021	19525	98	458	-360	0	5.0	23.5	-18.4	0.0
2022	19146	99	319	-220	0	5.2	16.7	-11.5	0.0

Source: Vital Statistics, SORS

Definitions

Population size

Number of population in the respective year. The data on the number of population in 1961, 1971, 1981 and 1991 are census data, while for the inter-census years the number of population was calculated as an average inter-census difference. From 2002 are given the population estimates that were calculated according to the census of population results and the annual statistics of natural mechanical population movements.

Livebirths

Absolute number of live births in the course of a year. Live born child means a child giving vital signs after birth (breathing, i.e. heartbeat), even for the shortest time, regardless the mother's pregnancy duration.

Deaths

Absolute number of deaths in the course of a year. Deceased is a person that whenever after having been born live, shows permanently stopped vital signs.

Natural increase

Natural population increase is the number of live births minus the number of deaths.

Infants deaths

Absolute number of infants deaths in the course of a year. Deceased infant is a child that after having been born live and before aged one year, shows permanently stopped vital signs.

Livebirths, per 1 000 population

Livebirths rate is the ratio of the number of live births and the population size in the respective year. The number of live births is divided by the population size and then multiplied by 1000.

Deaths, per 1 000 population

General mortality rate represents the ratio between the number of deaths and the population size in the respective year. The number of deaths is divided by population size and then multiplied by 1000.

Natural increase, per 1 000 population

Natural population increase rate is the difference between the number of live births and the number of deaths, in relation to the population size in the respective year.

Natural population increase rate = (number of live births - number of deaths) / population size * 1000

Infants deaths, per 1 000 livebirths

Infant mortality rate is the ratio of deceased children under 1 year of age and live births in the respective year. The mortality rate is expressed per 1000 live births.

Infant mortality rate = (number of deceased children under 1 year of age / number of live births) * 1000

Additional info:



Download all database data in Excel format:

[Data](#)



DevInfo profiles:

devinfo.stat.gov.rs/SerbiaProfileLauncher/?lang=en



DevInfo online database:

devinfo.stat.gov.rs/vitalna



For additional information or questions please contact:

devinfo@stat.gov.rs