

Natural changes of population 1961 – 2022

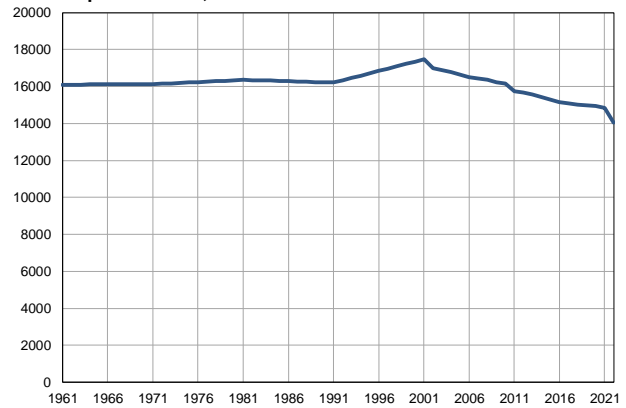
Profile
July 2023

Titel

	1961	2022
Population size	16103	14039
Livebirths, Number	286	131
Deaths, Number	159	251
Natural increase, Number	127	-120
Infants deaths, Number	16	1
Livebirths, per 1,000 population	18	9
Deaths, per 1,000 population	10	18
Natural increase, per 1,000 population	8	-9
Infants deaths, per 1,000 livebirths	56	8

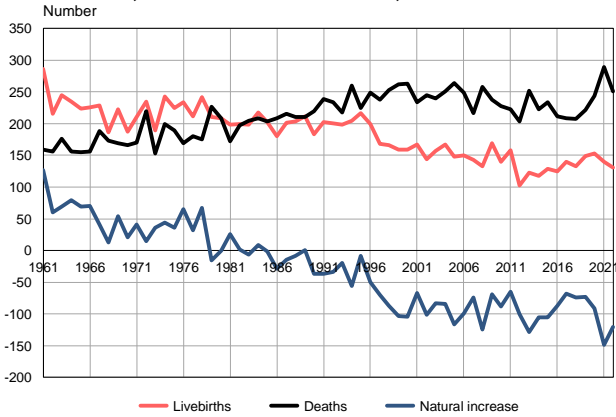
Source: Vital Statistics, SORS

Population size, 1961–2022



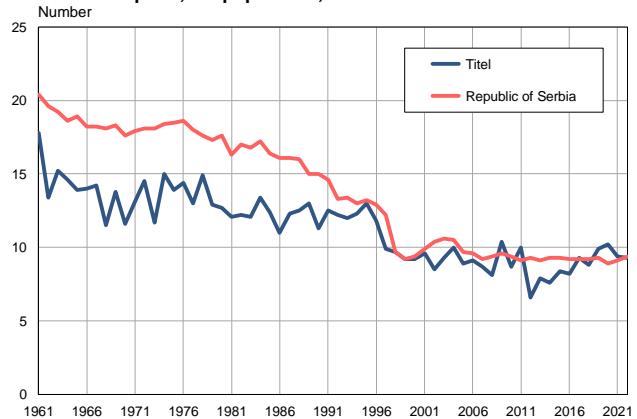
Source: Vital Statistics, SORS

Livebirths, deaths and natural increase, 1961–2022



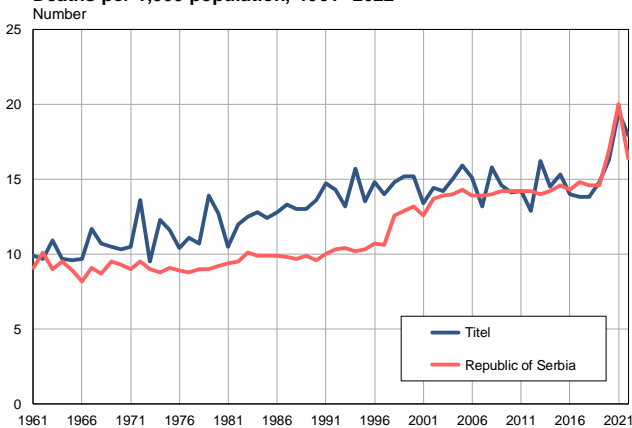
Source: Vital Statistics, SORS

Livebirths per 1,000 population, 1961–2022



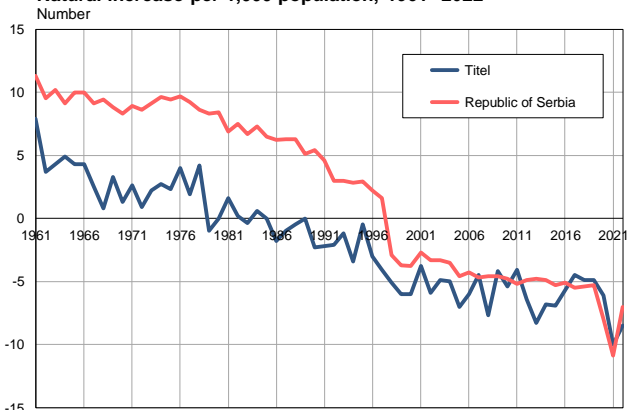
Source: Vital Statistics, SORS

Deaths per 1,000 population, 1961–2022



Source: Vital Statistics, SORS

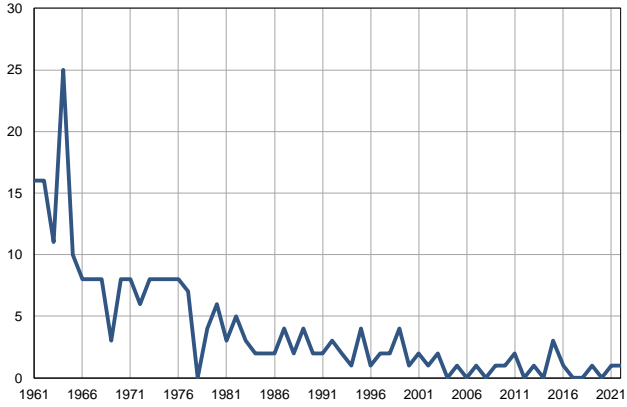
Natural increase per 1,000 population, 1961–2022



Source: Vital Statistics, SORS

Infants deaths, 1961–2022

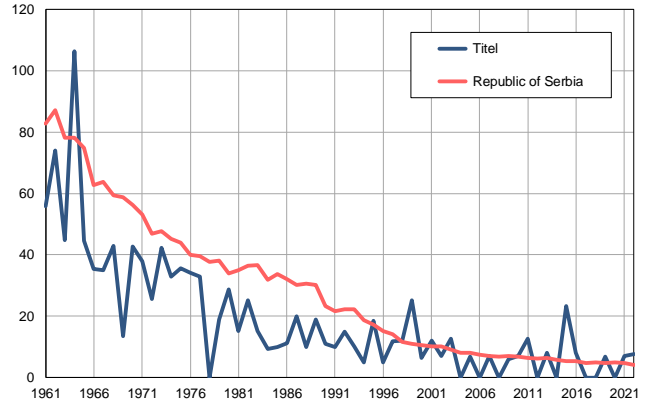
Number



Source: Vital Statistics, SORS

Infants deaths per 1,000 livebirths, 1961–2022

Number



Source: Vital Statistics, SORS

Table. Natural changes of population, Titel

Year	Number of population	Livebirths	Deaths	Natural increase	Infants deaths	per 1000 population			Infant deaths per 1000 livebirths
						Livebirths	Deaths	Natural increase	
1961	16103	286	159	127	16	17.8	9.9	7.9	55.9
1962	16106	216	156	60	16	13.4	9.7	3.7	74.1
1963	16110	245	176	69	11	15.2	10.9	4.3	44.9
1964	16111	235	156	79	25	14.6	9.7	4.9	106.4
1965	16114	224	155	69	10	13.9	9.6	4.3	44.6
1966	16117	226	156	70	8	14.0	9.7	4.3	35.4
1967	16120	229	188	41	8	14.2	11.7	2.5	34.9
1968	16123	186	173	13	8	11.5	10.7	0.8	43.0
1969	16125	223	169	54	3	13.8	10.5	3.3	13.5
1970	16128	187	166	21	8	11.6	10.3	1.3	42.8
1971	16131	211	170	41	8	13.1	10.5	2.6	37.9
1972	16154	235	220	15	6	14.5	13.6	0.9	25.5
1973	16178	189	153	36	8	11.7	9.5	2.2	42.3
1974	16201	243	199	44	8	15.0	12.3	2.7	32.9
1975	16224	225	189	36	8	13.9	11.6	2.3	35.6
1976	16248	234	169	65	8	14.4	10.4	4.0	34.2
1977	16271	212	180	32	7	13.0	11.1	1.9	33.0
1978	16294	242	175	67	0	14.9	10.7	4.2	0.0
1979	16317	211	227	-16	4	12.9	13.9	-1.0	19.0
1980	16341	208	208	0	6	12.7	12.7	0.0	28.8
1981	16364	198	172	26	3	12.1	10.5	1.6	15.2
1982	16349	199	197	2	5	12.2	12.0	0.2	25.1
1983	16335	198	204	-6	3	12.1	12.5	-0.4	15.2
1984	16320	218	209	9	2	13.4	12.8	0.6	9.2
1985	16306	202	203	-1	2	12.4	12.4	0.0	9.9
1986	16291	180	209	-29	2	11.0	12.8	-1.8	11.1
1987	16276	201	216	-15	4	12.3	13.3	-1.0	19.9
1988	16262	203	211	-8	2	12.5	13.0	-0.5	9.9
1989	16247	212	211	1	4	13.0	13.0	0.0	18.9
1990	16233	183	220	-37	2	11.3	13.6	-2.3	10.9
1991	16218	202	239	-37	2	12.5	14.7	-2.2	9.9
1992	16344	200	234	-34	3	12.2	14.3	-2.1	15.0
1993	16469	198	218	-20	2	12.0	13.2	-1.2	10.1
1994	16595	204	260	-56	1	12.3	15.7	-3.4	4.9
1995	16721	217	225	-8	4	13.0	13.5	-0.5	18.4
1996	16846	199	249	-50	1	11.8	14.8	-3.0	5.0
1997	16972	168	238	-70	2	9.9	14.0	-4.1	11.9
1998	17097	166	253	-87	2	9.7	14.8	-5.1	12.0
1999	17223	159	262	-103	4	9.2	15.2	-6.0	25.2
2000	17349	159	263	-104	1	9.2	15.2	-6.0	6.3
2001	17474	167	234	-67	2	9.6	13.4	-3.8	12.0
2002	17011	144	245	-101	1	8.5	14.4	-5.9	6.9
2003	16895	157	240	-83	2	9.3	14.2	-4.9	12.7
2004	16770	167	251	-84	0	10.0	15.0	-5.0	0.0
2005	16635	148	264	-116	1	8.9	15.9	-7.0	6.8

Table. Natural changes of population, Titel

Year	Number of population	Livebirths	Deaths	Natural increase	Infants deaths	per 1000 population			Infant deaths per 1000 livebirths
						Livebirths	Deaths	Natural increase	
2006	16513	150	249	-99	0	9.1	15.1	-6.0	0.0
2007	16441	143	217	-74	1	8.7	13.2	-4.5	7.0
2008	16359	133	258	-125	0	8.1	15.8	-7.7	0.0
2009	16249	169	238	-69	1	10.4	14.6	-4.2	5.9
2010	16158	140	228	-88	1	8.7	14.1	-5.4	7.1
2011	15753	158	223	-65	2	10.0	14.2	-4.1	12.7
2012	15680	103	203	-100	0	6.6	12.9	-6.4	0.0
2013	15571	123	252	-129	1	7.9	16.2	-8.3	8.1
2014	15429	118	223	-105	0	7.6	14.5	-6.8	0.0
2015	15280	129	234	-105	3	8.4	15.3	-6.9	23.3
2016	15165	125	212	-87	1	8.2	14.0	-5.7	8.0
2017	15089	140	208	-68	0	9.3	13.8	-4.5	0.0
2018	15031	133	207	-74	0	8.8	13.8	-4.9	0.0
2019	14997	149	222	-73	1	9.9	14.8	-4.9	6.7
2020	14944	153	244	-91	0	10.2	16.3	-6.1	0.0
2021	14844	140	289	-149	1	9.4	19.5	-10.0	7.1
2022	14039	131	251	-120	1	9.3	17.9	-8.5	7.6

Source: Vital Statistics, SORS

Definitions

Population size

Number of population in the respective year. The data on the number of population in 1961, 1971, 1981 and 1991 are census data, while for the inter-census years the number of population was calculated as an average inter-census difference. From 2002 are given the population estimates that were calculated according to the census of population results and the annual statistics of natural mechanical population movements.

Livebirths

Absolute number of live births in the course of a year. Live born child means a child giving vital signs after birth (breathing, i.e. heartbeat), even for the shortest time, regardless the mother's pregnancy duration.

Deaths

Absolute number of deaths in the course of a year. Deceased is a person that whenever after having been born live, shows permanently stopped vital signs.

Natural increase

Natural population increase is the number of live births minus the number of deaths.

Infants deaths

Absolute number of infants deaths in the course of a year. Deceased infant is a child that after having been born live and before aged one year, shows permanently stopped vital signs.

Livebirths, per 1 000 population

Livebirths rate is the ratio of the number of live births and the population size in the respective year. The number of live births is divided by the population size and then multiplied by 1000.

Deaths, per 1 000 population

General mortality rate represents the ratio between the number of deaths and the population size in the respective year. The number of deaths is divided by population size and then multiplied by 1000.

Natural increase, per 1 000 population

Natural population increase rate is the difference between the number of live births and the number of deaths, in relation to the population size in the respective year.

Natural population increase rate = (number of live births - number of deaths) / population size * 1000

Infants deaths, per 1 000 livebirths

Infant mortality rate is the ratio of deceased children under 1 year of age and live births in the respective year. The mortality rate is expressed per 1000 live births.

Infant mortality rate = (number of deceased children under 1 year of age / number of live births) * 1000

Additional info:



Download all database data in Excel format:

[Data](#)



DevInfo profiles:

devinfo.stat.gov.rs/SerbiaProfileLauncher/?lang=en



DevInfo online database:

devinfo.stat.gov.rs/vitalna



For additional information or questions please contact:

devinfo@stat.gov.rs