

# Natural changes of population 1961 – 2022

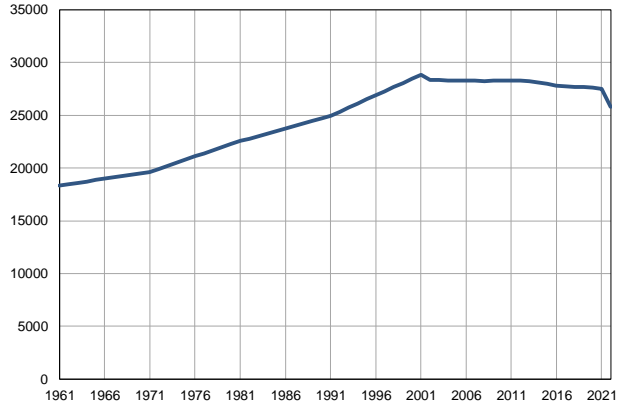
Profile  
July 2023

## Temerin

	1961	2022
Population size	18336	25828
Livebirths, Number	353	231
Deaths, Number	123	369
Natural increase, Number	230	-138
Infants deaths, Number	17	1
Livebirths, per 1,000 population	19	9
Deaths, per 1,000 population	7	14
Natural increase, per 1,000 population	13	-5
Infants deaths, per 1,000 livebirths	48	4

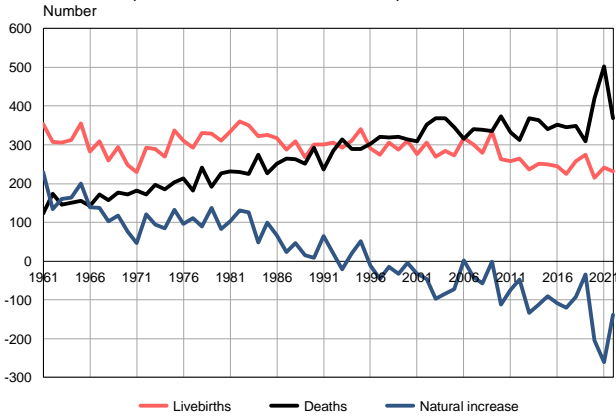
Source: Vital Statistics, SORS

Population size, 1961–2022



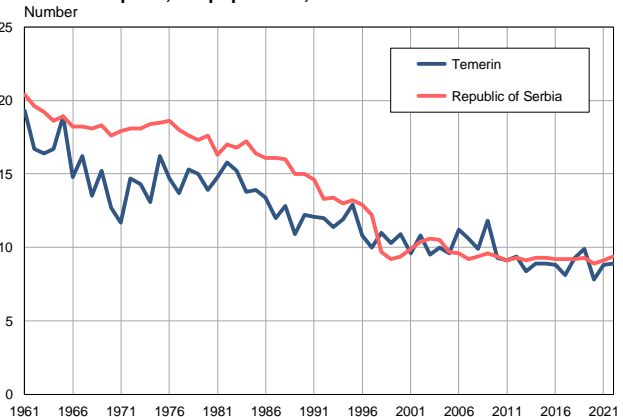
Source: Vital Statistics, SORS

Livebirths, deaths and natural increase, 1961–2022



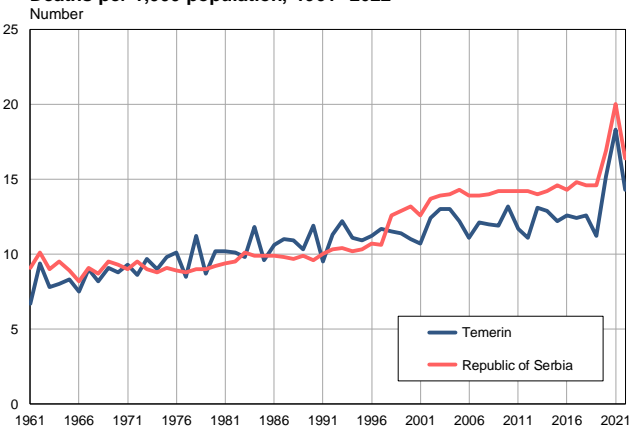
Source: Vital Statistics, SORS

Livebirths per 1,000 population, 1961–2022



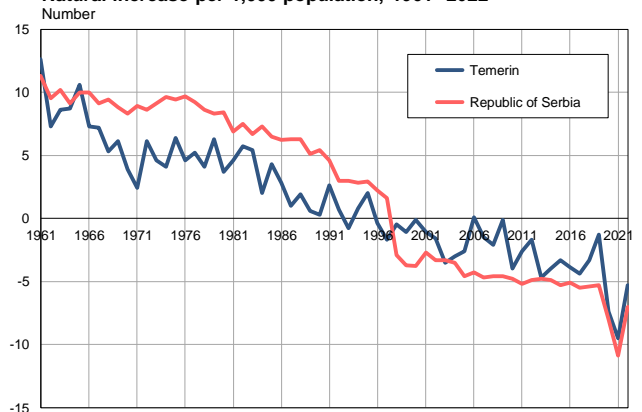
Source: Vital Statistics, SORS

Deaths per 1,000 population, 1961–2022



Source: Vital Statistics, SORS

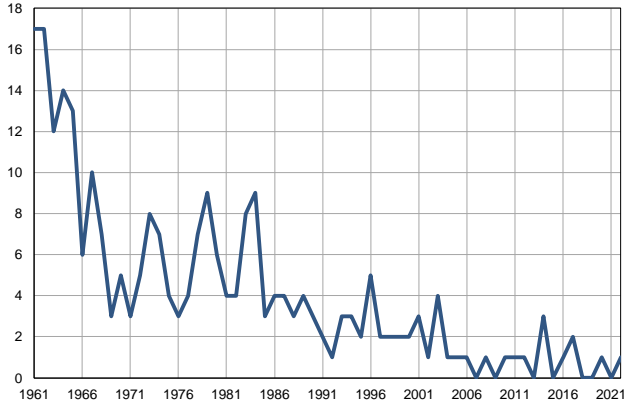
Natural increase per 1,000 population, 1961–2022



Source: Vital Statistics, SORS

**Infants deaths, 1961–2022**

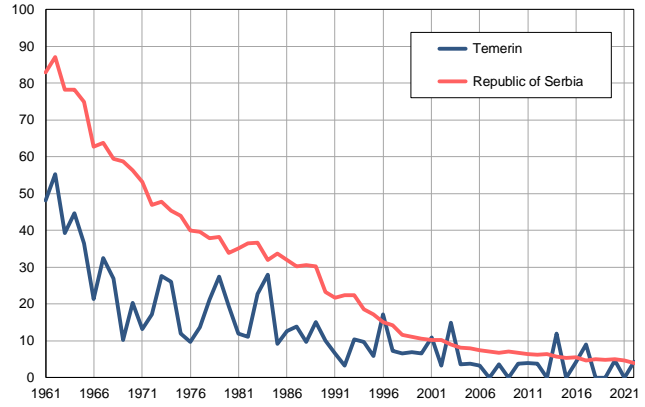
Number



Source: Vital Statistics, SORS

**Infants deaths per 1,000 livebirths, 1961–2022**

Number



Source: Vital Statistics, SORS

**Table. Natural changes of population, Temerin**

Year	Number of population	Livebirths	Deaths	Natural increase	Infants deaths	per 1000 population			Infant deaths per 1000 livebirths
						Livebirths	Deaths	Natural increase	
1961	18336	353	123	230	17	19.3	6.7	12.6	48.2
1962	18467	308	174	134	17	16.7	9.4	7.3	55.2
1963	18597	305	145	160	12	16.4	7.8	8.6	39.3
1964	18728	313	150	163	14	16.7	8.0	8.7	44.7
1965	18859	356	156	200	13	18.9	8.3	10.6	36.5
1966	18990	282	143	139	6	14.8	7.5	7.3	21.3
1967	19120	309	172	137	10	16.2	9.0	7.2	32.4
1968	19251	260	157	103	7	13.5	8.2	5.3	26.9
1969	19382	294	177	117	3	15.2	9.1	6.1	10.2
1970	19512	248	172	76	5	12.7	8.8	3.9	20.2
1971	19643	229	182	47	3	11.7	9.3	2.4	13.1
1972	19934	293	172	121	5	14.7	8.6	6.1	17.1
1973	20226	290	196	94	8	14.3	9.7	4.6	27.6
1974	20516	269	185	84	7	13.1	9.0	4.1	26.0
1975	20809	337	204	133	4	16.2	9.8	6.4	11.9
1976	21100	310	214	96	3	14.7	10.1	4.6	9.7
1977	21391	293	182	111	4	13.7	8.5	5.2	13.7
1978	21683	331	242	89	7	15.3	11.2	4.1	21.1
1979	21974	329	192	137	9	15.0	8.7	6.3	27.4
1980	22266	310	227	83	6	13.9	10.2	3.7	19.4
1981	22557	333	231	102	4	14.8	10.2	4.6	12.0
1982	22795	360	230	130	4	15.8	10.1	5.7	11.1
1983	23033	351	225	126	8	15.2	9.8	5.4	22.8
1984	23272	322	274	48	9	13.8	11.8	2.0	28.0
1985	23510	326	226	100	3	13.9	9.6	4.3	9.2
1986	23748	318	251	67	4	13.4	10.6	2.8	12.6
1987	23986	288	264	24	4	12.0	11.0	1.0	13.9
1988	24225	309	263	46	3	12.8	10.9	1.9	9.7
1989	24463	267	252	15	4	10.9	10.3	0.6	15.0
1990	24701	301	293	8	3	12.2	11.9	0.3	10.0
1991	24939	301	237	64	2	12.1	9.5	2.6	6.6
1992	25329	305	285	20	1	12.0	11.3	0.7	3.3
1993	25720	292	314	-22	3	11.4	12.2	-0.8	10.3
1994	26110	310	290	20	3	11.9	11.1	0.8	9.7
1995	26500	341	290	51	2	12.9	10.9	2.0	5.9
1996	26890	291	302	-11	5	10.8	11.2	-0.4	17.2
1997	27281	274	320	-46	2	10.0	11.7	-1.7	7.3
1998	27671	305	319	-14	2	11.0	11.5	-0.5	6.6
1999	28061	288	320	-32	2	10.3	11.4	-1.1	6.9
2000	28451	310	314	-4	2	10.9	11.0	-0.1	6.5
2001	28842	276	309	-33	3	9.6	10.7	-1.1	10.9
2002	28320	306	352	-46	1	10.8	12.4	-1.6	3.3
2003	28336	270	368	-98	4	9.5	13.0	-3.5	14.8
2004	28311	284	368	-84	1	10.0	13.0	-3.0	3.5
2005	28309	273	346	-73	1	9.6	12.2	-2.6	3.7

**Table. Natural changes of population, Temerin**

Year	Number of population	Livebirths	Deaths	Natural increase	Infants deaths	per 1000 population			Infant deaths per 1000 livebirths
						Livebirths	Deaths	Natural increase	
2006	28300	317	315	2	1	11.2	11.1	0.1	3.2
2007	28273	300	341	-41	0	10.6	12.1	-1.5	0.0
2008	28246	280	338	-58	1	9.9	12.0	-2.1	3.6
2009	28283	334	336	-2	0	11.8	11.9	-0.1	0.0
2010	28308	262	374	-112	1	9.3	13.2	-4.0	3.8
2011	28287	258	332	-74	1	9.1	11.7	-2.6	3.9
2012	28296	265	313	-48	1	9.4	11.1	-1.7	3.8
2013	28244	236	369	-133	0	8.4	13.1	-4.7	0.0
2014	28098	251	363	-112	3	8.9	12.9	-4.0	12.0
2015	27955	250	341	-91	0	8.9	12.2	-3.3	0.0
2016	27830	244	352	-108	1	8.8	12.6	-3.9	4.1
2017	27757	224	345	-121	2	8.1	12.4	-4.4	8.9
2018	27703	257	349	-92	0	9.3	12.6	-3.3	0.0
2019	27676	275	309	-34	0	9.9	11.2	-1.3	0.0
2020	27629	215	419	-204	1	7.8	15.2	-7.4	4.7
2021	27487	241	502	-261	0	8.8	18.3	-9.5	0.0
2022	25828	231	369	-138	1	8.9	14.3	-5.3	4.3

Source: Vital Statistics, SORS

## Definitions

### Population size

Number of population in the respective year. The data on the number of population in 1961, 1971, 1981 and 1991 are census data, while for the inter-census years the number of population was calculated as an average inter-census difference. From 2002 are given the population estimates that were calculated according to the census of population results and the annual statistics of natural mechanical population movements.

### Livebirths

Absolute number of live births in the course of a year. Live born child means a child giving vital signs after birth (breathing, i.e. heartbeat), even for the shortest time, regardless the mother's pregnancy duration.

### Deaths

Absolute number of deaths in the course of a year. Deceased is a person that whenever after having been born live, shows permanently stopped vital signs.

### Natural increase

Natural population increase is the number of live births minus the number of deaths.

### Infants deaths

Absolute number of infants deaths in the course of a year. Deceased infant is a child that after having been born live and before aged one year, shows permanently stopped vital signs.

### Livebirths, per 1 000 population

Livebirths rate is the ratio of the number of live births and the population size in the respective year. The number of live births is divided by the population size and then multiplied by 1000.

### Deaths, per 1 000 population

General mortality rate represents the ratio between the number of deaths and the population size in the respective year. The number of deaths is divided by population size and then multiplied by 1000.

### Natural increase, per 1 000 population

Natural population increase rate is the difference between the number of live births and the number of deaths, in relation to the population size in the respective year.

Natural population increase rate = (number of live births - number of deaths) / population size \* 1000

### Infants deaths, per 1 000 livebirths

Infant mortality rate is the ratio of deceased children under 1 year of age and live births in the respective year. The mortality rate is expressed per 1000 live births.

Infant mortality rate = (number of deceased children under 1 year of age / number of live births) \* 1000

## Additional info:



Download all database data in Excel format:

[Data](#)



DevInfo profiles:

[devinfo.stat.gov.rs/SerbiaProfileLauncher/?lang=en](http://devinfo.stat.gov.rs/SerbiaProfileLauncher/?lang=en)



DevInfo online database:

[devinfo.stat.gov.rs/vitalna](http://devinfo.stat.gov.rs/vitalna)



For additional information or questions please contact:

[devinfo@stat.gov.rs](mailto:devinfo@stat.gov.rs)