

Natural changes of population 1961 – 2020

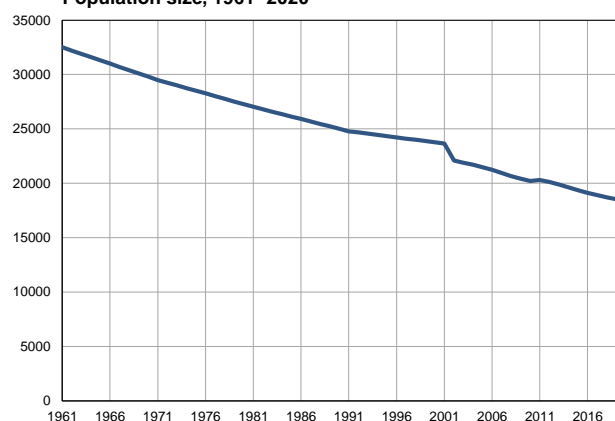
Profile
July 2021

Surdulica

	1961	2020
Population size	32505	18311
Livebirths, Number	771	143
Deaths, Number	279	336
Natural increase, Number	492	-193
Infants deaths, Number	70	0
Livebirths, per 1,000 population	24	8
Deaths, per 1,000 population	9	18
Natural increase, per 1,000 population	15	-11
Infants deaths, per 1,000 livebirths	91	0

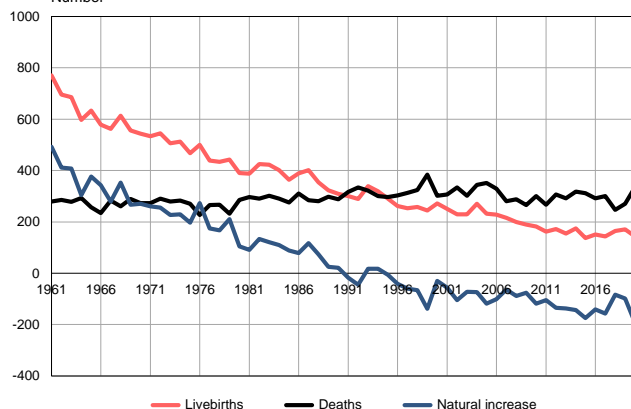
Source: Vital Statistics, SORS

Population size, 1961–2020



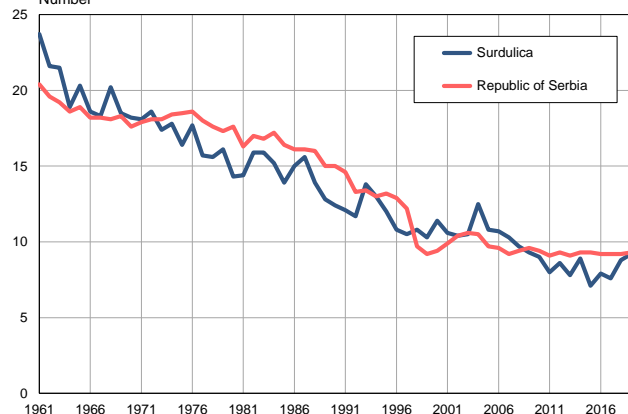
Source: Vital Statistics, SORS

Livebirths, deaths and natural increase, 1961–2020
Number



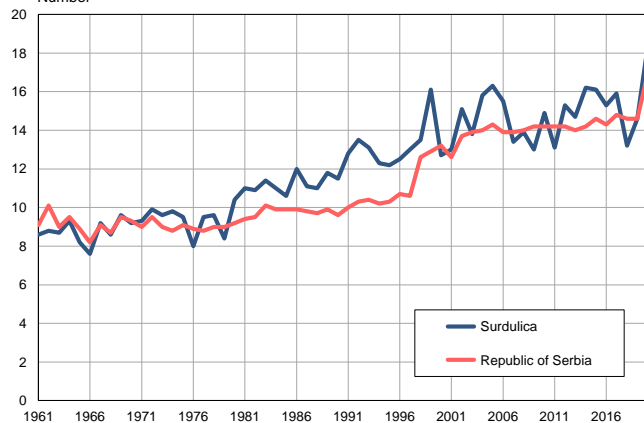
Source: Vital Statistics, SORS

Livebirths per 1,000 population, 1961–2020
Number



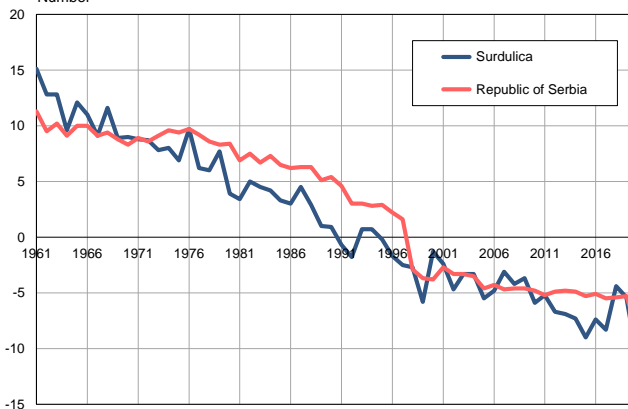
Source: Vital Statistics, SORS

Deaths per 1,000 population, 1961–2020
Number



Source: Vital Statistics, SORS

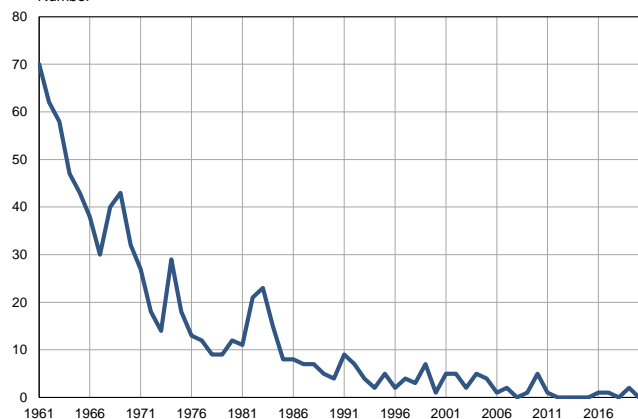
Natural increase per 1,000 population, 1961–2020
Number



Source: Vital Statistics, SORS

Infants deaths, 1961–2020

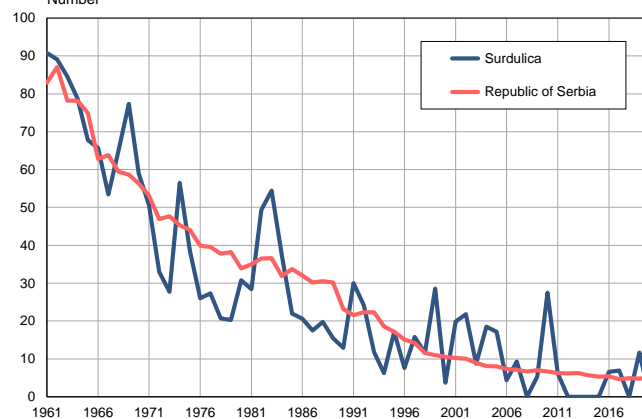
Number



Source: Vital Statistics, SORS

Infants deaths per 1,000 livebirths, 1961–2020

Number



Source: Vital Statistics, SORS

Table. Natural changes of population, Surdulica

Year	Number of population	Livebirths	Deaths	Natural increase	Infants deaths	per 1000 population			Infant deaths per 1000 livebirths
						Livebirths	Deaths	Natural increase	
1961	32505	771	279	492	70	23.7	8.6	15.1	90.8
1962	32204	696	285	411	62	21.6	8.8	12.8	89.1
1963	31903	686	278	408	58	21.5	8.7	12.8	84.5
1964	31602	597	293	304	47	18.9	9.3	9.6	78.7
1965	31301	634	257	377	43	20.3	8.2	12.1	67.8
1966	31000	578	235	343	38	18.6	7.6	11.0	65.7
1967	30698	562	283	279	30	18.3	9.2	9.1	53.4
1968	30397	614	261	353	40	20.2	8.6	11.6	65.1
1969	30096	556	289	267	43	18.5	9.6	8.9	77.3
1970	29795	543	273	270	32	18.2	9.2	9.0	58.9
1971	29494	534	273	261	27	18.1	9.3	8.8	50.6
1972	29248	545	290	255	18	18.6	9.9	8.7	33.0
1973	29001	506	279	227	14	17.4	9.6	7.8	27.7
1974	28755	513	283	230	29	17.8	9.8	8.0	56.5
1975	28508	468	271	197	18	16.4	9.5	6.9	38.5
1976	28262	500	227	273	13	17.7	8.0	9.7	26.0
1977	28015	439	265	174	12	15.7	9.5	6.2	27.3
1978	27769	434	267	167	9	15.6	9.6	6.0	20.7
1979	27522	443	232	211	9	16.1	8.4	7.7	20.3
1980	27276	390	285	105	12	14.3	10.4	3.9	30.8
1981	27029	388	297	91	11	14.4	11.0	3.4	28.4
1982	26805	425	291	134	21	15.9	10.9	5.0	49.4
1983	26580	423	302	121	23	15.9	11.4	4.5	54.4
1984	26356	401	291	110	15	15.2	11.0	4.2	37.4
1985	26131	364	276	88	8	13.9	10.6	3.3	22.0
1986	25907	389	310	79	8	15.0	12.0	3.0	20.6
1987	25683	401	284	117	7	15.6	11.1	4.5	17.5
1988	25458	354	281	73	7	13.9	11.0	2.9	19.8
1989	25234	323	298	25	5	12.8	11.8	1.0	15.5
1990	25008	309	288	21	4	12.4	11.5	0.9	12.9
1991	24785	300	317	-17	9	12.1	12.8	-0.7	30.0
1992	24672	289	334	-45	7	11.7	13.5	-1.8	24.2
1993	24559	339	322	17	4	13.8	13.1	0.7	11.8
1994	24446	319	301	18	2	13.0	12.3	0.7	6.3
1995	24333	291	297	-6	5	12.0	12.2	-0.2	17.2
1996	24220	262	303	-41	2	10.8	12.5	-1.7	7.6
1997	24107	253	313	-60	4	10.5	13.0	-2.5	15.8
1998	23994	258	324	-66	3	10.8	13.5	-2.7	11.6
1999	23881	245	384	-139	7	10.3	16.1	-5.8	28.6
2000	23768	272	302	-30	1	11.4	12.7	-1.3	3.7
2001	23655	251	307	-56	5	10.6	13.0	-2.4	19.9
2002	22083	229	334	-105	5	10.4	15.1	-4.7	21.8
2003	21876	230	302	-72	2	10.5	13.8	-3.3	8.7
2004	21707	271	344	-73	5	12.5	15.8	-3.3	18.5
2005	21487	232	351	-119	4	10.8	16.3	-5.5	17.2

Table. Natural changes of population, Surdulica

Year	Number of population	Livebirths	Deaths	Natural increase	Infants deaths	per 1000 population			Infant deaths per 1000 livebirths
						Livebirths	Deaths	Natural increase	
2006	21248	228	329	-101	1	10.7	15.5	-4.8	4.4
2007	20957	216	280	-64	2	10.3	13.4	-3.1	9.3
2008	20666	200	288	-88	0	9.7	13.9	-4.2	0.0
2009	20425	189	265	-76	1	9.3	13.0	-3.7	5.3
2010	20217	182	301	-119	5	9.0	14.9	-5.9	27.5
2011	20313	162	267	-105	1	8.0	13.1	-5.2	6.2
2012	20109	172	307	-135	0	8.6	15.3	-6.7	0.0
2013	19873	155	292	-137	0	7.8	14.7	-6.9	0.0
2014	19624	175	318	-143	0	8.9	16.2	-7.3	0.0
2015	19365	137	312	-175	0	7.1	16.1	-9.0	0.0
2016	19135	151	292	-141	1	7.9	15.3	-7.4	6.6
2017	18930	144	301	-157	1	7.6	15.9	-8.3	6.9
2018	18716	164	247	-83	0	8.8	13.2	-4.4	0.0
2019	18524	171	270	-99	2	9.2	14.6	-5.4	11.7
2020	18311	143	336	-193	0	7.8	18.3	-10.5	0.0

Source: Vital Statistics, SORS

Definitions

Population size

Number of population in the respective year. The data on the number of population in 1961, 1971, 1981 and 1991 are census data, while for the inter-census years the number of population was calculated as an average inter-census difference. From 2002 are given the population estimates that were calculated according to the census of population results and the annual statistics of natural mechanical population movements.

Livebirths

Absolute number of live births in the course of a year. Live born child means a child giving vital signs after birth (breathing, i.e. heartbeat), even for the shortest time, regardless the mother's pregnancy duration.

Deaths

Absolute number of deaths in the course of a year. Deceased is a person that whenever after having been born live, shows permanently stopped vital signs.

Natural increase

Natural population increase is the number of live births minus the number of deaths.

Infants deaths

Absolute number of infants deaths in the course of a year. Deceased infant is a child that after having been born live and before aged one year, shows permanently stopped vital signs.

Livebirths, per 1 000 population

Livebirths rate is the ratio of the number of live births and the population size in the respective year. The number of live births is divided by the population size and then multiplied by 1000.

Deaths, per 1 000 population

General mortality rate represents the ratio between the number of deaths and the population size in the respective year. The number of deaths is divided by population size and then multiplied by 1000.

Natural increase, per 1 000 population

Natural population increase rate is the difference between the number of live births and the number of deaths, in relation to the population size in the respective year.

Natural population increase rate = (number of live births - number of deaths) / population size * 1000

Infants deaths, per 1 000 livebirths

Infant mortality rate is the ratio of deceased children under 1 year of age and live births in the respective year. The mortality rate is expressed per 1000 live births.

Infant mortality rate = (number of deceased children under 1 year of age / number of live births) * 1000

Additional info:



Download all database data in Excel format:

[Data](#)



DevInfo profiles:

devinfo.stat.gov.rs/SerbiaProfileLauncher/?lang=en



DevInfo online database:

devinfo.stat.gov.rs/vitalna



For additional information or questions please contact:

devinfo@stat.gov.rs