

# Natural changes of population 1961 – 2022

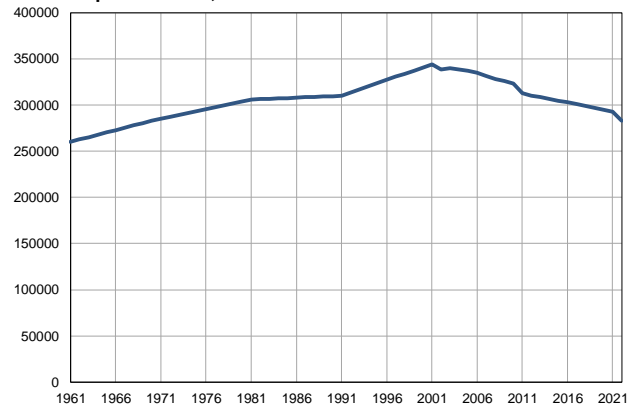
Profile  
July 2023

## Srem

	1961	2022
Population size	260226	283032
Livebirths, Number	4558	2458
Deaths, Number	2351	4671
Natural increase, Number	2207	-2213
Infants deaths, Number	394	14
Livebirths, per 1,000 population	18	9
Deaths, per 1,000 population	9	17
Natural increase, per 1,000 population	9	-8
Infants deaths, per 1,000 livebirths	86	6

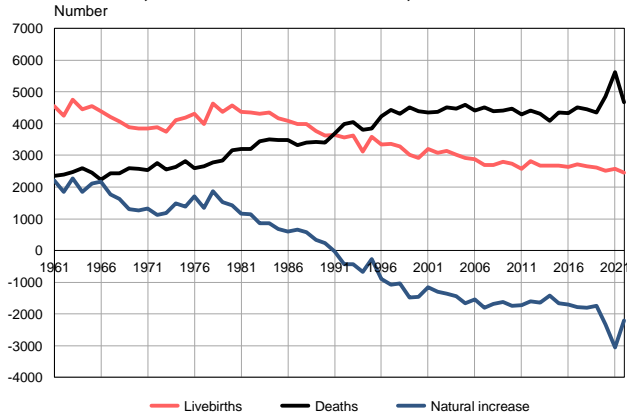
Source: Vital Statistics, SORS

Population size, 1961–2022



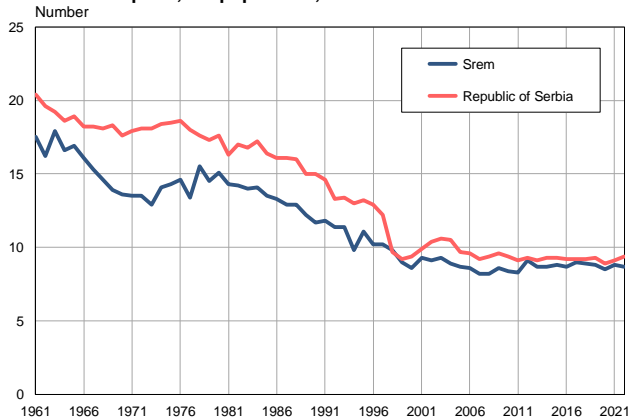
Source: Vital Statistics, SORS

Livebirths, deaths and natural increase, 1961–2022



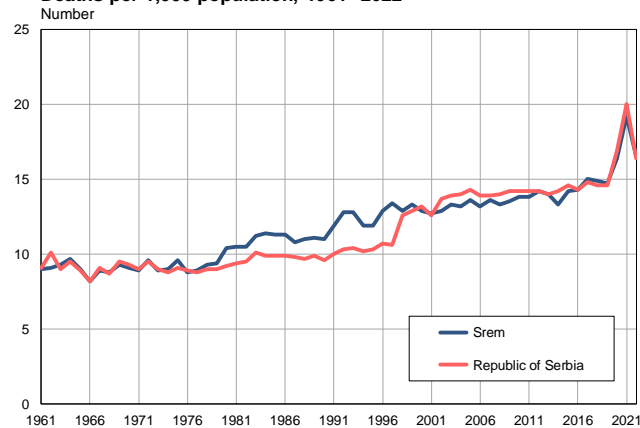
Source: Vital Statistics, SORS

Livebirths per 1,000 population, 1961–2022



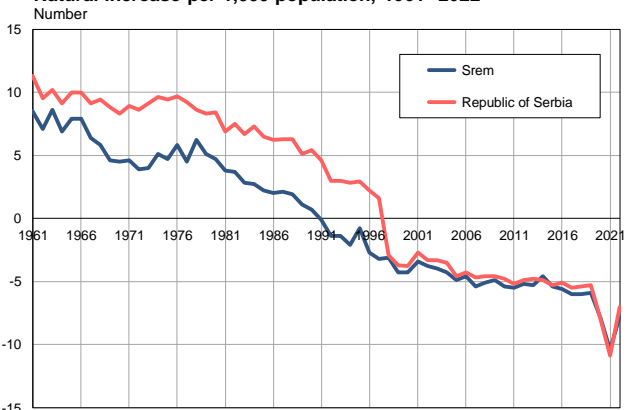
Source: Vital Statistics, SORS

Deaths per 1,000 population, 1961–2022



Source: Vital Statistics, SORS

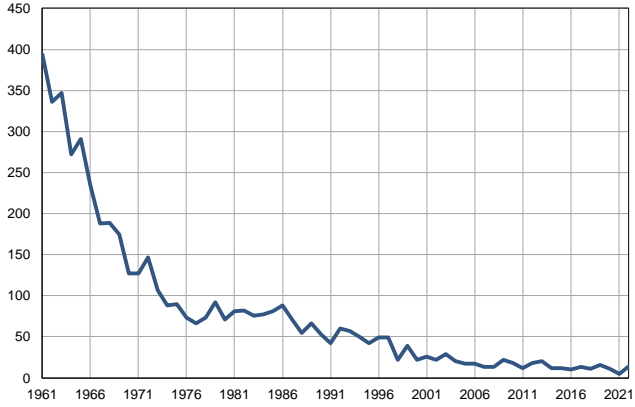
Natural increase per 1,000 population, 1961–2022



Source: Vital Statistics, SORS

**Infants deaths, 1961–2022**

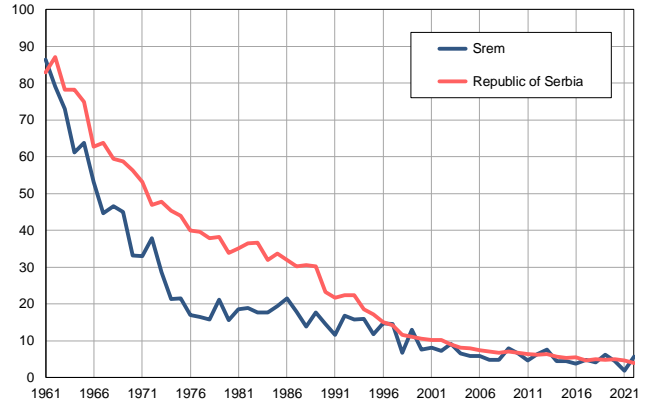
Number



Source: Vital Statistics, SORS

**Infants deaths per 1,000 livebirths, 1961–2022**

Number



Source: Vital Statistics, SORS

**Table. Natural changes of population, Srem**

Year	Number of population	Livebirths	Deaths	Natural increase	Infants deaths	per 1000 population			Infant deaths per 1000 livebirths
						Livebirths	Deaths	Natural increase	
1961	260226	4558	2351	2207	394	17.5	9.0	8.5	86.4
1962	262751	4247	2391	1856	336	16.2	9.1	7.1	79.1
1963	265276	4753	2476	2277	347	17.9	9.3	8.6	73.0
1964	267800	4444	2592	1852	272	16.6	9.7	6.9	61.2
1965	270325	4558	2446	2112	291	16.9	9.0	7.9	63.8
1966	272850	4398	2229	2169	234	16.1	8.2	7.9	53.2
1967	275375	4204	2444	1760	188	15.3	8.9	6.4	44.7
1968	277900	4062	2441	1621	189	14.6	8.8	5.8	46.5
1969	280424	3892	2596	1296	175	13.9	9.3	4.6	45.0
1970	282949	3839	2585	1254	127	13.6	9.1	4.5	33.1
1971	285474	3847	2528	1319	127	13.5	8.9	4.6	33.0
1972	287535	3884	2766	1118	147	13.5	9.6	3.9	37.8
1973	289596	3739	2565	1174	107	12.9	8.9	4.0	28.6
1974	291657	4110	2634	1476	88	14.1	9.0	5.1	21.4
1975	293718	4193	2816	1377	90	14.3	9.6	4.7	21.5
1976	295780	4306	2593	1713	73	14.6	8.8	5.8	17.0
1977	297841	3996	2655	1341	66	13.4	8.9	4.5	16.5
1978	299902	4641	2778	1863	73	15.5	9.3	6.2	15.7
1979	301963	4364	2840	1524	92	14.5	9.4	5.1	21.1
1980	304024	4578	3151	1427	71	15.1	10.4	4.7	15.5
1981	306085	4373	3208	1165	81	14.3	10.5	3.8	18.5
1982	306475	4347	3204	1143	82	14.2	10.5	3.7	18.9
1983	306864	4303	3444	859	76	14.0	11.2	2.8	17.7
1984	307254	4347	3496	851	77	14.1	11.4	2.7	17.7
1985	307643	4168	3487	681	81	13.5	11.3	2.2	19.4
1986	308033	4088	3487	601	88	13.3	11.3	2.0	21.5
1987	308423	3983	3331	652	71	12.9	10.8	2.1	17.8
1988	308812	3985	3408	577	55	12.9	11.0	1.9	13.8
1989	309201	3758	3419	339	66	12.2	11.1	1.1	17.6
1990	309591	3630	3394	236	53	11.7	11.0	0.7	14.6
1991	309981	3649	3676	-27	42	11.8	11.9	-0.1	11.5
1992	313411	3568	3997	-429	60	11.4	12.8	-1.4	16.8
1993	316840	3620	4043	-423	57	11.4	12.8	-1.4	15.7
1994	320270	3126	3809	-683	50	9.8	11.9	-2.1	16.0
1995	323700	3584	3849	-265	42	11.1	11.9	-0.8	11.7
1996	327129	3342	4234	-892	49	10.2	12.9	-2.7	14.7
1997	330559	3361	4435	-1074	49	10.2	13.4	-3.2	14.6
1998	333988	3287	4321	-1034	22	9.8	12.9	-3.1	6.7
1999	337418	3029	4503	-1474	39	9.0	13.3	-4.3	12.9
2000	340848	2924	4384	-1460	22	8.6	12.9	-4.3	7.5
2001	344277	3194	4361	-1167	26	9.3	12.7	-3.4	8.1
2002	338285	3074	4375	-1301	22	9.1	12.9	-3.8	7.2
2003	339700	3149	4506	-1357	29	9.3	13.3	-4.0	9.2
2004	338833	3021	4467	-1446	20	8.9	13.2	-4.3	6.6
2005	337216	2917	4586	-1669	17	8.7	13.6	-4.9	5.8

**Table. Natural changes of population, Srem**

Year	Number of population	Livebirths	Deaths	Natural increase	Infants deaths	per 1000 population			Infant deaths per 1000 livebirths
						Livebirths	Deaths	Natural increase	
2006	334989	2870	4421	-1551	17	8.6	13.2	-4.6	5.9
2007	331866	2705	4505	-1800	13	8.2	13.6	-5.4	4.8
2008	328397	2696	4384	-1688	13	8.2	13.3	-5.1	4.8
2009	325734	2793	4410	-1617	22	8.6	13.5	-4.9	7.9
2010	323197	2727	4474	-1747	18	8.4	13.8	-5.4	6.6
2011	312530	2580	4300	-1720	12	8.3	13.8	-5.5	4.7
2012	310418	2810	4414	-1604	18	9.1	14.2	-5.2	6.4
2013	308512	2670	4317	-1647	20	8.7	14.0	-5.3	7.5
2014	306717	2678	4089	-1411	12	8.7	13.3	-4.6	4.5
2015	304889	2680	4343	-1663	12	8.8	14.2	-5.4	4.5
2016	302929	2632	4332	-1700	10	8.7	14.3	-5.6	3.8
2017	300988	2715	4508	-1793	13	9.0	15.0	-6.0	4.8
2018	299060	2664	4458	-1794	11	8.9	14.9	-6.0	4.1
2019	297197	2621	4361	-1740	16	8.8	14.7	-5.9	6.1
2020	295132	2520	4850	-2330	11	8.5	16.4	-7.9	4.4
2021	292579	2566	5617	-3051	5	8.8	19.2	-10.4	1.9
2022	283032	2458	4671	-2213	14	8.7	16.5	-7.8	5.7

Source: Vital Statistics, SORS

## Definitions

### Population size

Number of population in the respective year. The data on the number of population in 1961, 1971, 1981 and 1991 are census data, while for the inter-census years the number of population was calculated as an average inter-census difference. From 2002 are given the population estimates that were calculated according to the census of population results and the annual statistics of natural mechanical population movements.

### Livebirths

Absolute number of live births in the course of a year. Live born child means a child giving vital signs after birth (breathing, i.e. heartbeat), even for the shortest time, regardless the mother's pregnancy duration.

### Deaths

Absolute number of deaths in the course of a year. Deceased is a person that whenever after having been born live, shows permanently stopped vital signs.

### Natural increase

Natural population increase is the number of live births minus the number of deaths.

### Infants deaths

Absolute number of infants deaths in the course of a year. Deceased infant is a child that after having been born live and before aged one year, shows permanently stopped vital signs.

### Livebirths, per 1 000 population

Livebirths rate is the ratio of the number of live births and the population size in the respective year. The number of live births is divided by the population size and then multiplied by 1000.

### Deaths, per 1 000 population

General mortality rate represents the ratio between the number of deaths and the population size in the respective year. The number of deaths is divided by population size and then multiplied by 1000.

### Natural increase, per 1 000 population

Natural population increase rate is the difference between the number of live births and the number of deaths, in relation to the population size in the respective year.

Natural population increase rate = (number of live births - number of deaths) / population size \* 1000

### Infants deaths, per 1 000 livebirths

Infant mortality rate is the ratio of deceased children under 1 year of age and live births in the respective year. The mortality rate is expressed per 1000 live births.

Infant mortality rate = (number of deceased children under 1 year of age / number of live births) \* 1000

## Additional info:



Download all database data in Excel format:

[Data](#)



DevInfo profiles:

[devinfo.stat.gov.rs/SerbiaProfileLauncher/?lang=en](http://devinfo.stat.gov.rs/SerbiaProfileLauncher/?lang=en)



DevInfo online database:

[devinfo.stat.gov.rs/vitalna](http://devinfo.stat.gov.rs/vitalna)



For additional information or questions please contact:

[devinfo@stat.gov.rs](mailto:devinfo@stat.gov.rs)