

# Natural changes of population 1961 – 2022

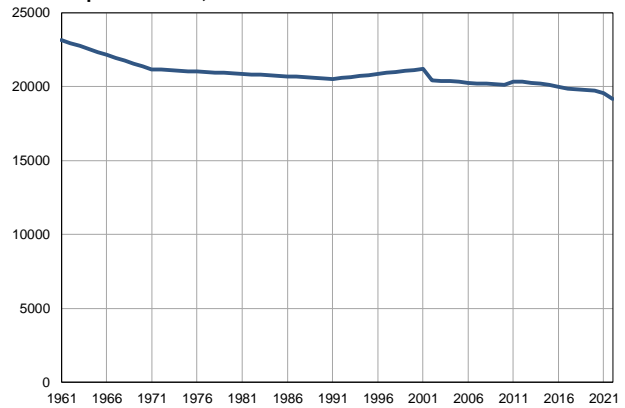
Profile  
July 2023

## Sopot

	1961	2022
Population size	23131	19153
Livebirths, Number	340	184
Deaths, Number	238	319
Natural increase, Number	102	-135
Infants deaths, Number	26	0
Livebirths, per 1,000 population	15	10
Deaths, per 1,000 population	10	17
Natural increase, per 1,000 population	4	-7
Infants deaths, per 1,000 livebirths	77	0

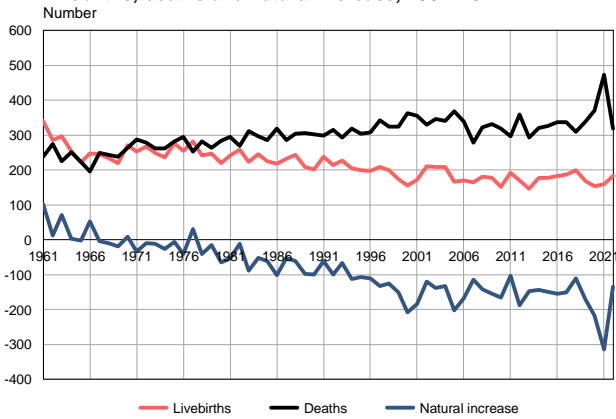
Source: Vital Statistics, SORS

Population size, 1961–2022



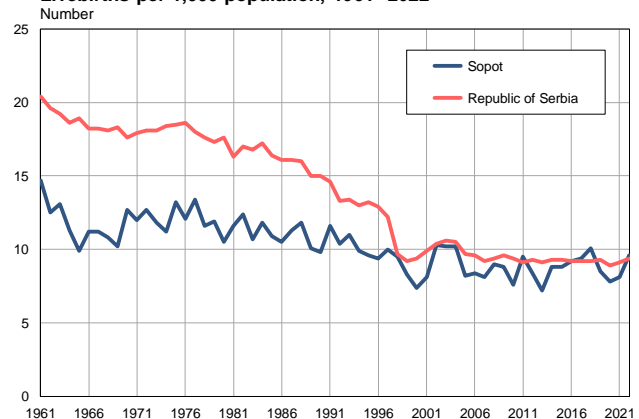
Source: Vital Statistics, SORS

Livebirths, deaths and natural increase, 1961–2022



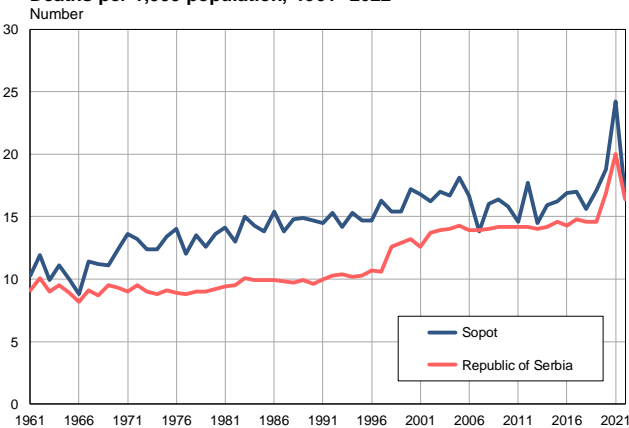
Source: Vital Statistics, SORS

Livebirths per 1,000 population, 1961–2022



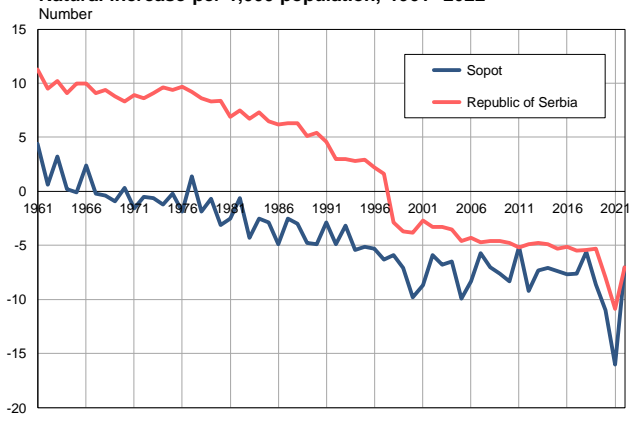
Source: Vital Statistics, SORS

Deaths per 1,000 population, 1961–2022



Source: Vital Statistics, SORS

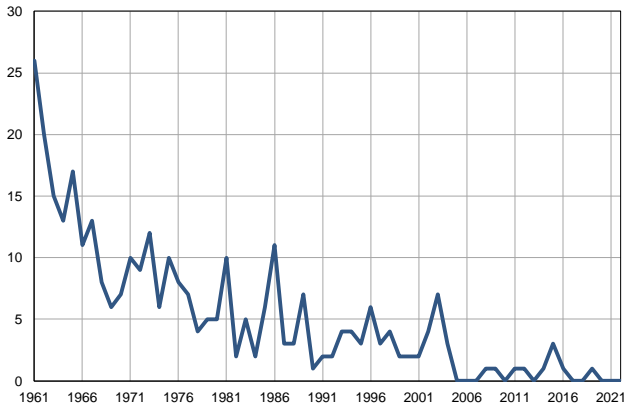
Natural increase per 1,000 population, 1961–2022



Source: Vital Statistics, SORS

**Infants deaths, 1961–2022**

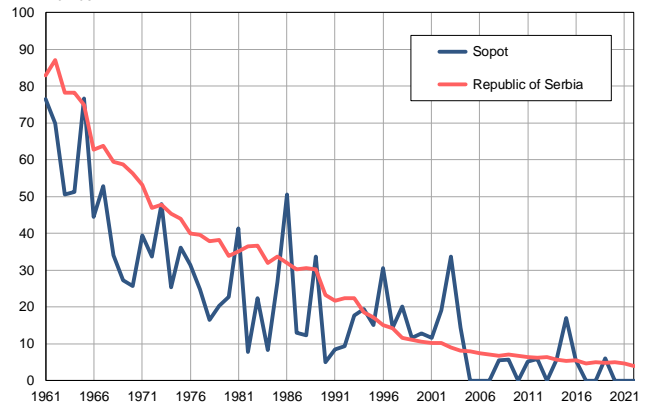
Number



Source: Vital Statistics, SORS

**Infants deaths per 1,000 livebirths, 1961–2022**

Number



Source: Vital Statistics, SORS

**Table. Natural changes of population, Sopot**

Year	Number of population	Livebirths	Deaths	Natural increase	Infants deaths	per 1000 population			Infant deaths per 1000 livebirths
						Livebirths	Deaths	Natural increase	
1961	23131	340	238	102	26	14.7	10.3	4.4	76.5
1962	22934	286	274	12	20	12.5	11.9	0.6	69.9
1963	22738	297	225	72	15	13.1	9.9	3.2	50.5
1964	22542	254	251	3	13	11.3	11.1	0.2	51.2
1965	22345	222	224	-2	17	9.9	10.0	-0.1	76.6
1966	22149	248	196	52	11	11.2	8.8	2.4	44.4
1967	21952	246	250	-4	13	11.2	11.4	-0.2	52.8
1968	21756	235	244	-9	8	10.8	11.2	-0.4	34.0
1969	21559	220	239	-19	6	10.2	11.1	-0.9	27.3
1970	21363	272	264	8	7	12.7	12.4	0.3	25.7
1971	21166	253	287	-34	10	12.0	13.6	-1.6	39.5
1972	21135	268	278	-10	9	12.7	13.2	-0.5	33.6
1973	21105	250	262	-12	12	11.8	12.4	-0.6	48.0
1974	21074	236	262	-26	6	11.2	12.4	-1.2	25.4
1975	21044	277	282	-5	10	13.2	13.4	-0.2	36.1
1976	21013	255	295	-40	8	12.1	14.0	-1.9	31.4
1977	20982	282	252	30	7	13.4	12.0	1.4	24.8
1978	20952	242	283	-41	4	11.6	13.5	-1.9	16.5
1979	20921	248	263	-15	5	11.9	12.6	-0.7	20.2
1980	20891	220	284	-64	5	10.5	13.6	-3.1	22.7
1981	20860	242	295	-53	10	11.6	14.1	-2.5	41.3
1982	20827	259	270	-11	2	12.4	13.0	-0.6	7.7
1983	20793	223	311	-88	5	10.7	15.0	-4.3	22.4
1984	20760	245	297	-52	2	11.8	14.3	-2.5	8.2
1985	20727	225	286	-61	6	10.9	13.8	-2.9	26.7
1986	20694	218	319	-101	11	10.5	15.4	-4.9	50.5
1987	20660	233	285	-52	3	11.3	13.8	-2.5	12.9
1988	20627	244	305	-61	3	11.8	14.8	-3.0	12.3
1989	20594	208	306	-98	7	10.1	14.9	-4.8	33.7
1990	20560	202	302	-100	1	9.8	14.7	-4.9	5.0
1991	20527	238	298	-60	2	11.6	14.5	-2.9	8.4
1992	20592	215	315	-100	2	10.4	15.3	-4.9	9.3
1993	20658	227	294	-67	4	11.0	14.2	-3.2	17.6
1994	20723	206	318	-112	4	9.9	15.3	-5.4	19.4
1995	20788	199	305	-106	3	9.6	14.7	-5.1	15.1
1996	20853	197	307	-110	6	9.4	14.7	-5.3	30.5
1997	20919	209	342	-133	3	10.0	16.3	-6.3	14.4
1998	20984	199	324	-125	4	9.5	15.4	-5.9	20.1
1999	21049	174	325	-151	2	8.3	15.4	-7.1	11.5
2000	21114	156	363	-207	2	7.4	17.2	-9.8	12.8
2001	21180	172	356	-184	2	8.1	16.8	-8.7	11.6
2002	20430	211	330	-119	4	10.3	16.2	-5.9	19.0
2003	20385	208	346	-138	7	10.2	17.0	-6.8	33.7
2004	20361	208	340	-132	3	10.2	16.7	-6.5	14.4
2005	20339	166	368	-202	0	8.2	18.1	-9.9	0.0

**Table. Natural changes of population, Sopot**

Year	Number of population	Livebirths	Deaths	Natural increase	Infants deaths	per 1000 population			Infant deaths per 1000 livebirths
						Livebirths	Deaths	Natural increase	
2006	20258	171	339	-168	0	8.4	16.7	-8.3	0.0
2007	20207	164	279	-115	0	8.1	13.8	-5.7	0.0
2008	20190	182	323	-141	1	9.0	16.0	-7.0	5.5
2009	20157	177	331	-154	1	8.8	16.4	-7.6	5.6
2010	20099	152	318	-166	0	7.6	15.8	-8.3	0.0
2011	20338	193	297	-104	1	9.5	14.6	-5.1	5.2
2012	20331	171	359	-188	1	8.4	17.7	-9.2	5.8
2013	20257	146	293	-147	0	7.2	14.5	-7.3	0.0
2014	20192	178	321	-143	1	8.8	15.9	-7.1	5.6
2015	20126	178	327	-149	3	8.8	16.2	-7.4	16.9
2016	20002	184	338	-154	1	9.2	16.9	-7.7	5.4
2017	19870	186	337	-151	0	9.4	17.0	-7.6	0.0
2018	19819	200	310	-110	0	10.1	15.6	-5.6	0.0
2019	19788	168	339	-171	1	8.5	17.1	-8.6	6.0
2020	19714	154	371	-217	0	7.8	18.8	-11.0	0.0
2021	19572	159	473	-314	0	8.1	24.2	-16.0	0.0
2022	19153	184	319	-135	0	9.6	16.7	-7.0	0.0

Source: Vital Statistics, SORS

## Definitions

### Population size

Number of population in the respective year. The data on the number of population in 1961, 1971, 1981 and 1991 are census data, while for the inter-census years the number of population was calculated as an average inter-census difference. From 2002 are given the population estimates that were calculated according to the census of population results and the annual statistics of natural mechanical population movements.

### Livebirths

Absolute number of live births in the course of a year. Live born child means a child giving vital signs after birth (breathing, i.e. heartbeat), even for the shortest time, regardless the mother's pregnancy duration.

### Deaths

Absolute number of deaths in the course of a year. Deceased is a person that whenever after having been born live, shows permanently stopped vital signs.

### Natural increase

Natural population increase is the number of live births minus the number of deaths.

### Infants deaths

Absolute number of infants deaths in the course of a year. Deceased infant is a child that after having been born live and before aged one year, shows permanently stopped vital signs.

### Livebirths, per 1 000 population

Livebirths rate is the ratio of the number of live births and the population size in the respective year. The number of live births is divided by the population size and then multiplied by 1000.

### Deaths, per 1 000 population

General mortality rate represents the ratio between the number of deaths and the population size in the respective year. The number of deaths is divided by population size and then multiplied by 1000.

### Natural increase, per 1 000 population

Natural population increase rate is the difference between the number of live births and the number of deaths, in relation to the population size in the respective year.

Natural population increase rate = (number of live births - number of deaths) / population size \* 1000

### Infants deaths, per 1 000 livebirths

Infant mortality rate is the ratio of deceased children under 1 year of age and live births in the respective year. The mortality rate is expressed per 1000 live births.

Infant mortality rate = (number of deceased children under 1 year of age / number of live births) \* 1000

## Additional info:



Download all database data in Excel format:

[Data](#)



DevInfo profiles:

[devinfo.stat.gov.rs/SerbiaProfileLauncher/?lang=en](http://devinfo.stat.gov.rs/SerbiaProfileLauncher/?lang=en)



DevInfo online database:

[devinfo.stat.gov.rs/vitalna](http://devinfo.stat.gov.rs/vitalna)



For additional information or questions please contact:

[devinfo@stat.gov.rs](mailto:devinfo@stat.gov.rs)