

Natural changes of population 1961 – 2022

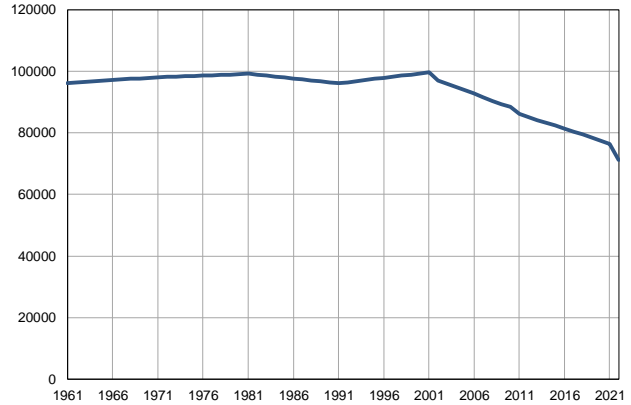
Profile
July 2023

Sombor

	1961	2022
Population size	96191	71094
Livebirths, Number	1489	588
Deaths, Number	939	1475
Natural increase, Number	550	-887
Infants deaths, Number	127	3
Livebirths, per 1,000 population	16	8
Deaths, per 1,000 population	10	21
Natural increase, per 1,000 population	6	-13
Infants deaths, per 1,000 livebirths	85	5

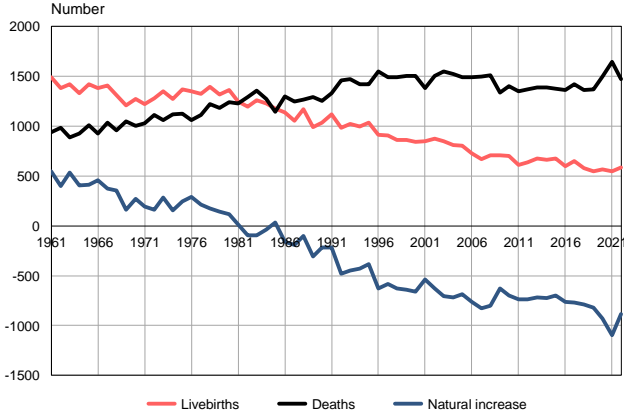
Source: Vital Statistics, SORS

Population size, 1961–2022



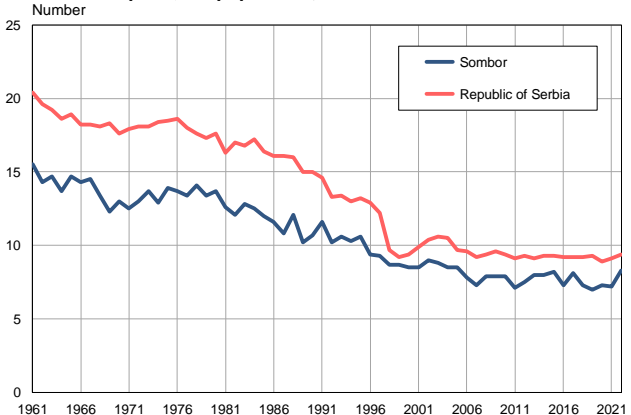
Source: Vital Statistics, SORS

Livebirths, deaths and natural increase, 1961–2022



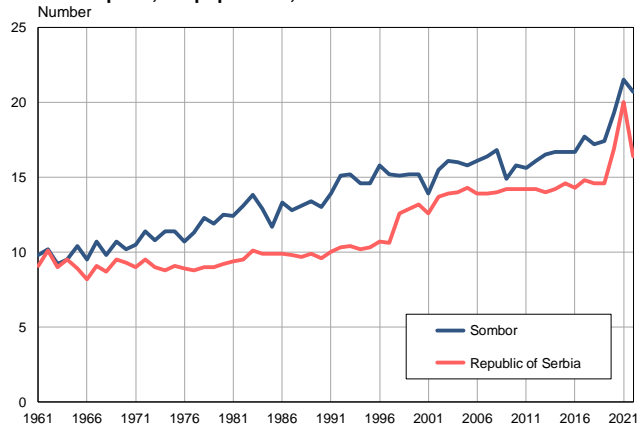
Source: Vital Statistics, SORS

Livebirths per 1,000 population, 1961–2022



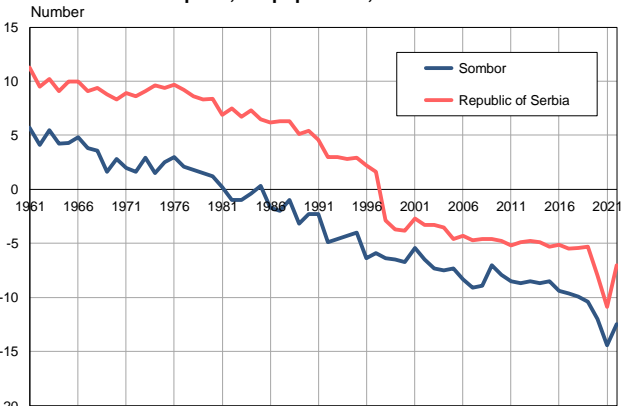
Source: Vital Statistics, SORS

Deaths per 1,000 population, 1961–2022



Source: Vital Statistics, SORS

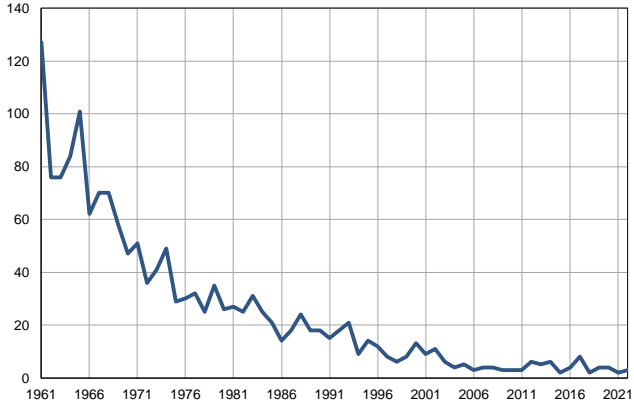
Natural increase per 1,000 population, 1961–2022



Source: Vital Statistics, SORS

Infants deaths, 1961–2022

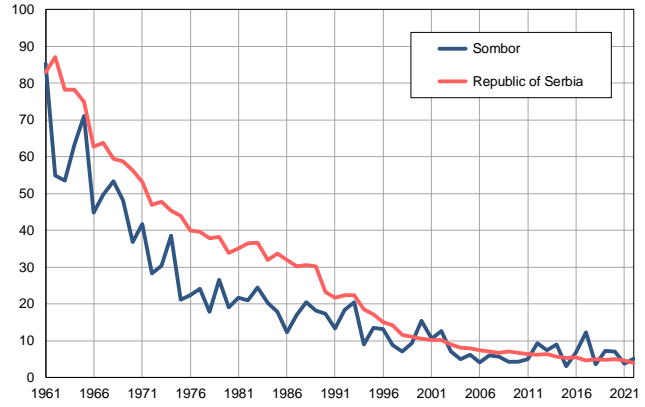
Number



Source: Vital Statistics, SORS

Infants deaths per 1,000 livebirths, 1961–2022

Number



Source: Vital Statistics, SORS

Table. Natural changes of population, Sombor

Year	Number of population	Livebirths	Deaths	Natural increase	Infants deaths	per 1000 population			Infant deaths per 1000 livebirths
						Livebirths	Deaths	Natural increase	
1961	96191	1489	939	550	127	15.5	9.8	5.7	85.3
1962	96380	1381	981	400	76	14.3	10.2	4.1	55.0
1963	96569	1421	886	535	76	14.7	9.2	5.5	53.5
1964	96758	1329	924	405	84	13.7	9.5	4.2	63.2
1965	96947	1421	1010	411	101	14.7	10.4	4.3	71.1
1966	97136	1385	926	459	62	14.3	9.5	4.8	44.8
1967	97324	1408	1037	371	70	14.5	10.7	3.8	49.7
1968	97513	1310	957	353	70	13.4	9.8	3.6	53.4
1969	97702	1206	1047	159	58	12.3	10.7	1.6	48.1
1970	97891	1275	1003	272	47	13.0	10.2	2.8	36.9
1971	98080	1224	1029	195	51	12.5	10.5	2.0	41.7
1972	98189	1277	1115	162	36	13.0	11.4	1.6	28.2
1973	98298	1349	1062	287	41	13.7	10.8	2.9	30.4
1974	98406	1274	1117	157	49	12.9	11.4	1.5	38.5
1975	98515	1369	1126	243	29	13.9	11.4	2.5	21.2
1976	98624	1347	1059	288	30	13.7	10.7	3.0	22.3
1977	98733	1327	1111	216	32	13.4	11.3	2.1	24.1
1978	98842	1393	1219	174	25	14.1	12.3	1.8	17.9
1979	98950	1321	1180	141	35	13.4	11.9	1.5	26.5
1980	99059	1361	1243	118	26	13.7	12.5	1.2	19.1
1981	99168	1246	1231	15	27	12.6	12.4	0.2	21.7
1982	98862	1198	1295	-97	25	12.1	13.1	-1.0	20.9
1983	98555	1263	1357	-94	31	12.8	13.8	-1.0	24.5
1984	98249	1231	1271	-40	25	12.5	12.9	-0.4	20.3
1985	97943	1179	1147	32	21	12.0	11.7	0.3	17.8
1986	97637	1136	1296	-160	14	11.6	13.3	-1.7	12.3
1987	97330	1056	1250	-194	18	10.8	12.8	-2.0	17.0
1988	97024	1170	1269	-99	24	12.1	13.1	-1.0	20.5
1989	96718	991	1295	-304	18	10.2	13.4	-3.2	18.2
1990	96411	1035	1251	-216	18	10.7	13.0	-2.3	17.4
1991	96105	1118	1333	-215	15	11.6	13.9	-2.3	13.4
1992	96454	982	1460	-478	18	10.2	15.1	-4.9	18.3
1993	96804	1024	1474	-450	21	10.6	15.2	-4.6	20.5
1994	97153	997	1423	-426	9	10.3	14.6	-4.3	9.0
1995	97502	1038	1421	-383	14	10.6	14.6	-4.0	13.5
1996	97852	915	1546	-631	12	9.4	15.8	-6.4	13.1
1997	98202	910	1490	-580	8	9.3	15.2	-5.9	8.8
1998	98552	862	1489	-627	6	8.7	15.1	-6.4	7.0
1999	98901	862	1501	-639	8	8.7	15.2	-6.5	9.3
2000	99250	842	1505	-663	13	8.5	15.2	-6.7	15.4
2001	99600	848	1385	-537	9	8.5	13.9	-5.4	10.6
2002	97017	872	1501	-629	11	9.0	15.5	-6.5	12.6
2003	96028	848	1550	-702	6	8.8	16.1	-7.3	7.1
2004	94981	809	1524	-715	4	8.5	16.0	-7.5	4.9
2005	93946	803	1489	-686	5	8.5	15.8	-7.3	6.2

Table. Natural changes of population, Sombor

Year	Number of population	Livebirths	Deaths	Natural increase	Infants deaths	per 1000 population			Infant deaths per 1000 livebirths
						Livebirths	Deaths	Natural increase	
2006	92887	726	1491	-765	3	7.8	16.1	-8.3	4.1
2007	91631	669	1499	-830	4	7.3	16.4	-9.1	6.0
2008	90328	710	1513	-803	4	7.9	16.8	-8.9	5.6
2009	89314	705	1335	-630	3	7.9	14.9	-7.0	4.3
2010	88452	701	1401	-700	3	7.9	15.8	-7.9	4.3
2011	86088	613	1347	-734	3	7.1	15.6	-8.5	4.9
2012	85127	635	1372	-737	6	7.5	16.1	-8.7	9.4
2013	84187	673	1390	-717	5	8.0	16.5	-8.5	7.4
2014	83297	666	1387	-721	6	8.0	16.7	-8.7	9.0
2015	82389	674	1375	-701	2	8.2	16.7	-8.5	3.0
2016	81401	597	1361	-764	4	7.3	16.7	-9.4	6.7
2017	80400	653	1422	-769	8	8.1	17.7	-9.6	12.3
2018	79437	578	1364	-786	2	7.3	17.2	-9.9	3.5
2019	78472	548	1369	-821	4	7.0	17.4	-10.4	7.3
2020	77463	566	1497	-931	4	7.3	19.3	-12.0	7.1
2021	76393	547	1645	-1098	2	7.2	21.5	-14.4	3.7
2022	71094	588	1475	-887	3	8.3	20.7	-12.5	5.1

Source: Vital Statistics, SORS

Definitions

Population size

Number of population in the respective year. The data on the number of population in 1961, 1971, 1981 and 1991 are census data, while for the inter-census years the number of population was calculated as an average inter-census difference. From 2002 are given the population estimates that were calculated according to the census of population results and the annual statistics of natural mechanical population movements.

Livebirths

Absolute number of live births in the course of a year. Live born child means a child giving vital signs after birth (breathing, i.e. heartbeat), even for the shortest time, regardless the mother's pregnancy duration.

Deaths

Absolute number of deaths in the course of a year. Deceased is a person that whenever after having been born live, shows permanently stopped vital signs.

Natural increase

Natural population increase is the number of live births minus the number of deaths.

Infants deaths

Absolute number of infants deaths in the course of a year. Deceased infant is a child that after having been born live and before aged one year, shows permanently stopped vital signs.

Livebirths, per 1 000 population

Livebirths rate is the ratio of the number of live births and the population size in the respective year. The number of live births is divided by the population size and then multiplied by 1000.

Deaths, per 1 000 population

General mortality rate represents the ratio between the number of deaths and the population size in the respective year. The number of deaths is divided by population size and then multiplied by 1000.

Natural increase, per 1 000 population

Natural population increase rate is the difference between the number of live births and the number of deaths, in relation to the population size in the respective year.

Natural population increase rate = (number of live births - number of deaths) / population size * 1000

Infants deaths, per 1 000 livebirths

Infant mortality rate is the ratio of deceased children under 1 year of age and live births in the respective year. The mortality rate is expressed per 1000 live births.

Infant mortality rate = (number of deceased children under 1 year of age / number of live births) * 1000

Additional info:



Download all database data in Excel format:

[Data](#)



DevInfo profiles:

devinfo.stat.gov.rs/SerbiaProfileLauncher/?lang=en



DevInfo online database:

devinfo.stat.gov.rs/vitalna



For additional information or questions please contact:

devinfo@stat.gov.rs