

Natural changes of population 1961 – 2022

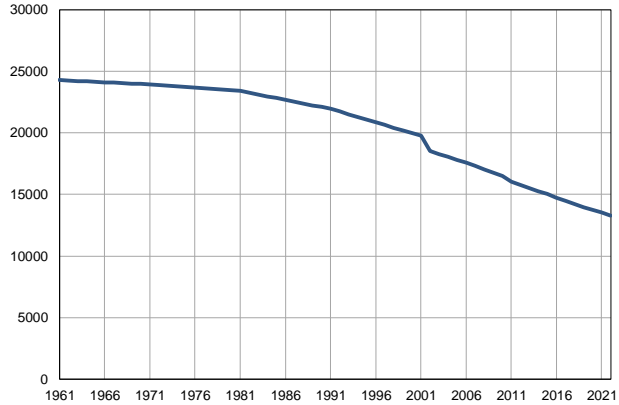
Profile
July 2023

Sokobanja

	1961	2022
Population size	24285	13261
Livebirths, Number	234	94
Deaths, Number	271	316
Natural increase, Number	-37	-222
Infants deaths, Number	13	1
Livebirths, per 1,000 population	10	7
Deaths, per 1,000 population	11	24
Natural increase, per 1,000 population	-2	-17
Infants deaths, per 1,000 livebirths	56	11

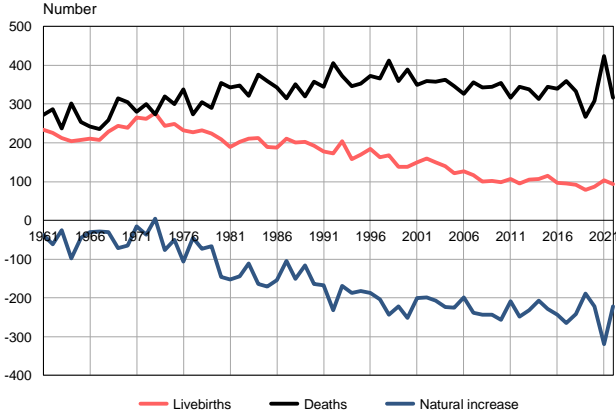
Source: Vital Statistics, SORS

Population size, 1961–2022



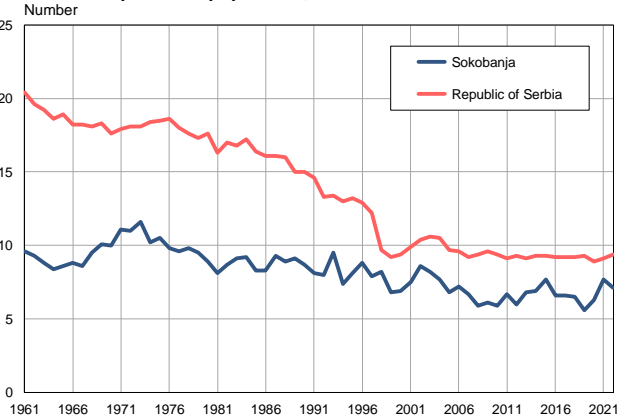
Source: Vital Statistics, SORS

Livebirths, deaths and natural increase, 1961–2022



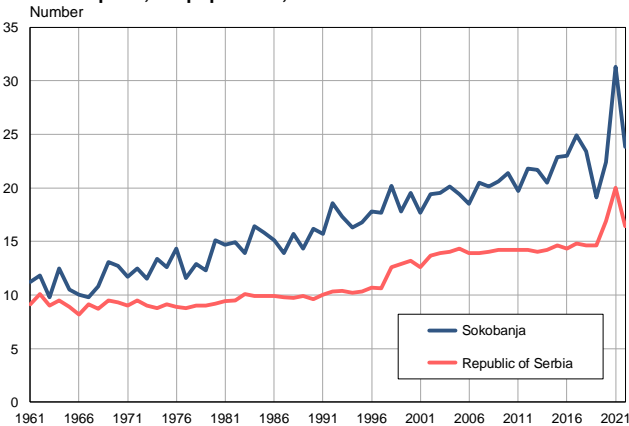
Source: Vital Statistics, SORS

Livebirths per 1,000 population, 1961–2022



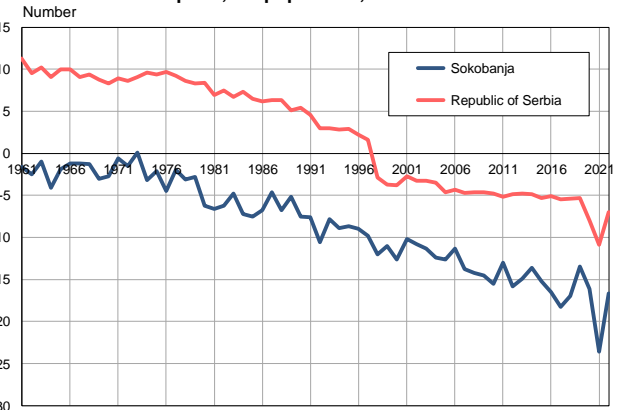
Source: Vital Statistics, SORS

Deaths per 1,000 population, 1961–2022



Source: Vital Statistics, SORS

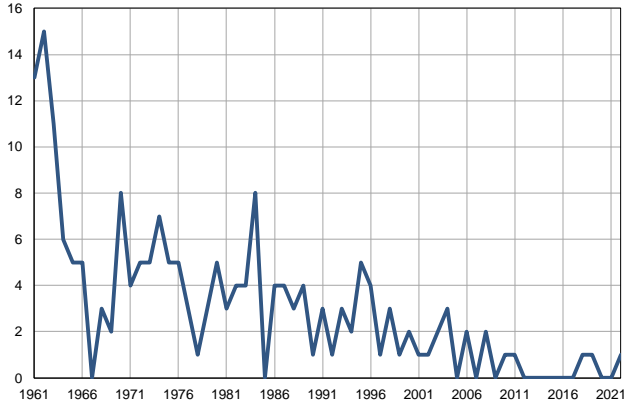
Natural increase per 1,000 population, 1961–2022



Source: Vital Statistics, SORS

Infants deaths, 1961–2022

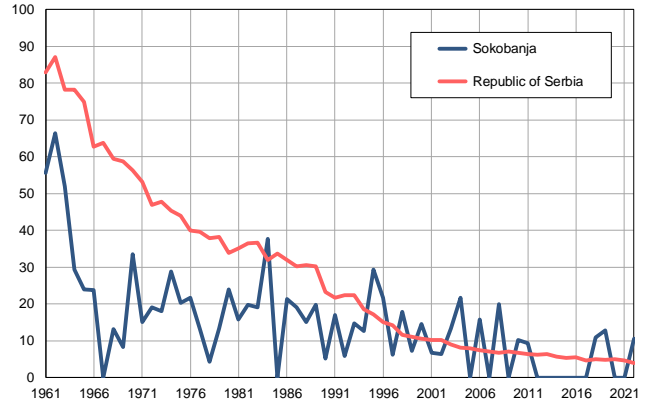
Number



Source: Vital Statistics, SORS

Infants deaths per 1,000 livebirths, 1961–2022

Number



Source: Vital Statistics, SORS

Table. Natural changes of population, Sokobanja

Year	Number of population	Livebirths	Deaths	Natural increase	Infants deaths	per 1000 population			Infant deaths per 1000 livebirths
						Livebirths	Deaths	Natural increase	
1961	24285	234	271	-37	13	9.6	11.2	-1.6	55.6
1962	24250	226	287	-61	15	9.3	11.8	-2.5	66.4
1963	24214	212	237	-25	11	8.8	9.8	-1.0	51.9
1964	24179	204	302	-98	6	8.4	12.5	-4.1	29.4
1965	24144	208	254	-46	5	8.6	10.5	-1.9	24.0
1966	24109	211	242	-31	5	8.8	10.0	-1.2	23.7
1967	24073	207	236	-29	0	8.6	9.8	-1.2	0.0
1968	24038	229	259	-30	3	9.5	10.8	-1.3	13.1
1969	24003	243	314	-71	2	10.1	13.1	-3.0	8.2
1970	23967	239	304	-65	8	10.0	12.7	-2.7	33.5
1971	23932	265	280	-15	4	11.1	11.7	-0.6	15.1
1972	23878	262	299	-37	5	11.0	12.5	-1.5	19.1
1973	23824	277	273	4	5	11.6	11.5	0.1	18.1
1974	23771	243	319	-76	7	10.2	13.4	-3.2	28.8
1975	23717	248	299	-51	5	10.5	12.6	-2.1	20.2
1976	23663	232	338	-106	5	9.8	14.3	-4.5	21.6
1977	23609	227	273	-46	3	9.6	11.6	-2.0	13.2
1978	23555	232	305	-73	1	9.8	12.9	-3.1	4.3
1979	23502	224	290	-66	3	9.5	12.3	-2.8	13.4
1980	23447	209	355	-146	5	8.9	15.1	-6.2	23.9
1981	23394	190	343	-153	3	8.1	14.7	-6.6	15.8
1982	23249	203	347	-144	4	8.7	14.9	-6.2	19.7
1983	23106	211	322	-111	4	9.1	13.9	-4.8	19.0
1984	22960	212	376	-164	8	9.2	16.4	-7.2	37.7
1985	22816	190	360	-170	0	8.3	15.8	-7.5	0.0
1986	22671	188	342	-154	4	8.3	15.1	-6.8	21.3
1987	22526	210	314	-104	4	9.3	13.9	-4.6	19.0
1988	22382	200	351	-151	3	8.9	15.7	-6.8	15.0
1989	22237	203	319	-116	4	9.1	14.3	-5.2	19.7
1990	22093	192	357	-165	1	8.7	16.2	-7.5	5.2
1991	21948	177	345	-168	3	8.1	15.7	-7.6	16.9
1992	21729	173	405	-232	1	8.0	18.6	-10.6	5.8
1993	21511	204	373	-169	3	9.5	17.3	-7.8	14.7
1994	21292	158	346	-188	2	7.4	16.3	-8.9	12.7
1995	21074	170	353	-183	5	8.1	16.8	-8.7	29.4
1996	20855	184	372	-188	4	8.8	17.8	-9.0	21.7
1997	20636	163	366	-203	1	7.9	17.7	-9.8	6.1
1998	20418	168	412	-244	3	8.2	20.2	-12.0	17.9
1999	20200	138	360	-222	1	6.8	17.8	-11.0	7.2
2000	19982	138	389	-251	2	6.9	19.5	-12.6	14.5
2001	19763	149	350	-201	1	7.5	17.7	-10.2	6.7
2002	18526	160	359	-199	1	8.6	19.4	-10.8	6.3
2003	18292	150	357	-207	2	8.2	19.5	-11.3	13.3
2004	18041	139	363	-224	3	7.7	20.1	-12.4	21.6
2005	17802	121	346	-225	0	6.8	19.4	-12.6	0.0

Table. Natural changes of population, Sokobanja

Year	Number of population	Livebirths	Deaths	Natural increase	Infants deaths	per 1000 population			Infant deaths per 1000 livebirths
						Livebirths	Deaths	Natural increase	
2006	17584	127	326	-199	2	7.2	18.5	-11.3	15.7
2007	17338	117	356	-239	0	6.7	20.5	-13.8	0.0
2008	17038	100	343	-243	2	5.9	20.1	-14.2	20.0
2009	16763	102	345	-243	0	6.1	20.6	-14.5	0.0
2010	16524	98	354	-256	1	5.9	21.4	-15.5	10.2
2011	16035	107	316	-209	1	6.7	19.7	-13.0	9.3
2012	15783	95	344	-249	0	6.0	21.8	-15.8	0.0
2013	15524	105	337	-232	0	6.8	21.7	-14.9	0.0
2014	15265	106	313	-207	0	6.9	20.5	-13.6	0.0
2015	15019	115	344	-229	0	7.7	22.9	-15.2	0.0
2016	14755	97	340	-243	0	6.6	23.0	-16.5	0.0
2017	14467	95	360	-265	0	6.6	24.9	-18.3	0.0
2018	14201	92	333	-241	1	6.5	23.4	-17.0	10.9
2019	13967	78	267	-189	1	5.6	19.1	-13.5	12.8
2020	13760	86	308	-222	0	6.3	22.4	-16.1	0.0
2021	13534	104	424	-320	0	7.7	31.3	-23.6	0.0
2022	13261	94	316	-222	1	7.1	23.8	-16.7	10.6

Source: Vital Statistics, SORS

Definitions

Population size

Number of population in the respective year. The data on the number of population in 1961, 1971, 1981 and 1991 are census data, while for the inter-census years the number of population was calculated as an average inter-census difference. From 2002 are given the population estimates that were calculated according to the census of population results and the annual statistics of natural mechanical population movements.

Livebirths

Absolute number of live births in the course of a year. Live born child means a child giving vital signs after birth (breathing, i.e. heartbeat), even for the shortest time, regardless the mother's pregnancy duration.

Deaths

Absolute number of deaths in the course of a year. Deceased is a person that whenever after having been born live, shows permanently stopped vital signs.

Natural increase

Natural population increase is the number of live births minus the number of deaths.

Infants deaths

Absolute number of infants deaths in the course of a year. Deceased infant is a child that after having been born live and before aged one year, shows permanently stopped vital signs.

Livebirths, per 1 000 population

Livebirths rate is the ratio of the number of live births and the population size in the respective year. The number of live births is divided by the population size and then multiplied by 1000.

Deaths, per 1 000 population

General mortality rate represents the ratio between the number of deaths and the population size in the respective year. The number of deaths is divided by population size and then multiplied by 1000.

Natural increase, per 1 000 population

Natural population increase rate is the difference between the number of live births and the number of deaths, in relation to the population size in the respective year.

Natural population increase rate = (number of live births - number of deaths) / population size * 1000

Infants deaths, per 1 000 livebirths

Infant mortality rate is the ratio of deceased children under 1 year of age and live births in the respective year. The mortality rate is expressed per 1000 live births.

Infant mortality rate = (number of deceased children under 1 year of age / number of live births) * 1000

Additional info:



Download all database data in Excel format:

[Data](#)



DevInfo profiles:

devinfo.stat.gov.rs/SerbiaProfileLauncher/?lang=en



DevInfo online database:

devinfo.stat.gov.rs/vitalna



For additional information or questions please contact:

devinfo@stat.gov.rs