

Natural changes of population 1961 – 2022

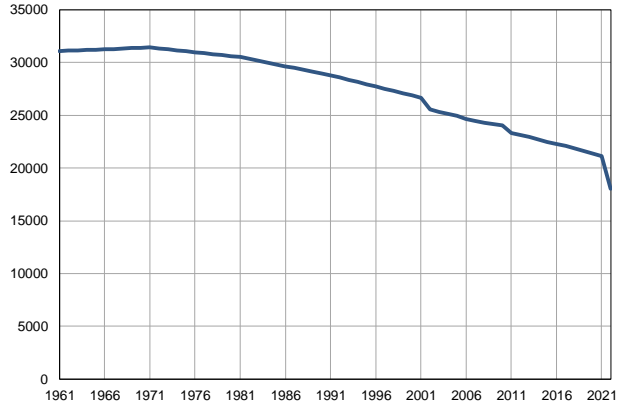
Profile
July 2023

Senta

	1961	2022
Population size	31081	18048
Livebirths, Number	519	151
Deaths, Number	327	432
Natural increase, Number	192	-281
Infants deaths, Number	26	1
Livebirths, per 1,000 population	17	8
Deaths, per 1,000 population	11	24
Natural increase, per 1,000 population	6	-16
Infants deaths, per 1,000 livebirths	50	7

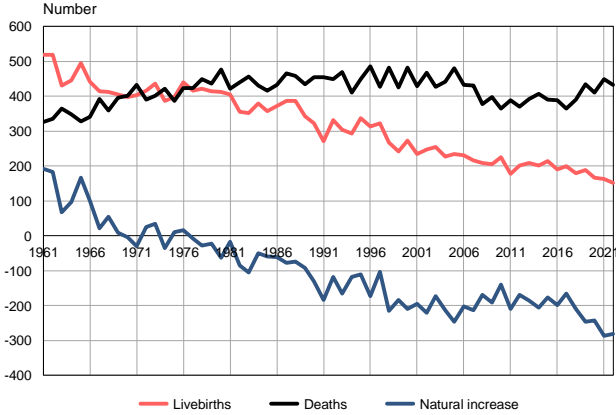
Source: Vital Statistics, SORS

Population size, 1961–2022



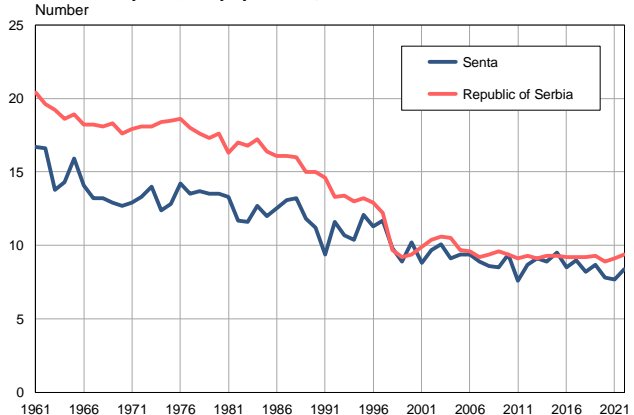
Source: Vital Statistics, SORS

Livebirths, deaths and natural increase, 1961–2022



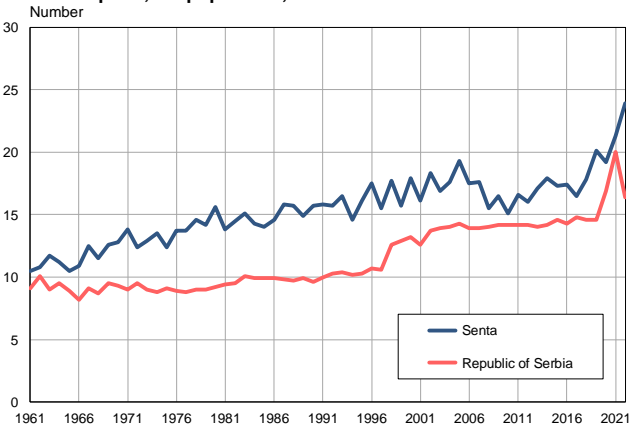
Source: Vital Statistics, SORS

Livebirths per 1,000 population, 1961–2022



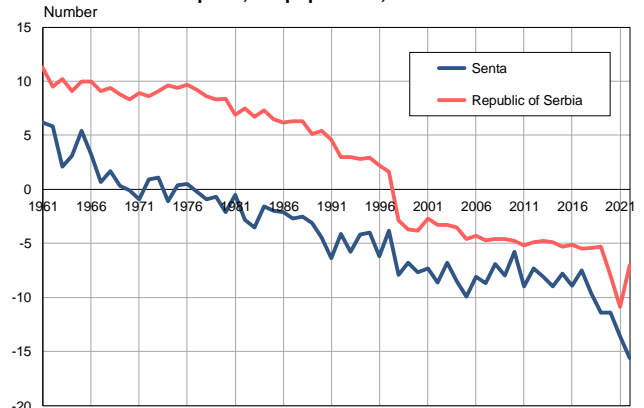
Source: Vital Statistics, SORS

Deaths per 1,000 population, 1961–2022



Source: Vital Statistics, SORS

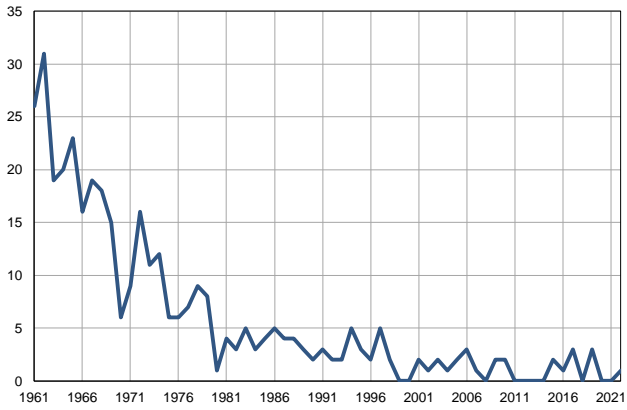
Natural increase per 1,000 population, 1961–2022



Source: Vital Statistics, SORS

Infants deaths, 1961–2022

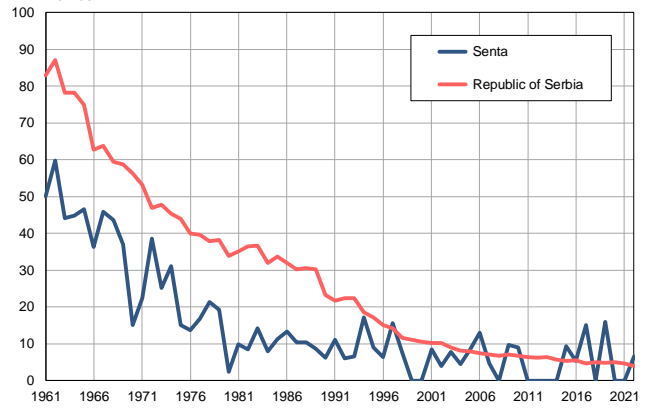
Number



Source: Vital Statistics, SORS

Infants deaths per 1,000 livebirths, 1961–2022

Number



Source: Vital Statistics, SORS

Table. Natural changes of population, Senta

Year	Number of population	Livebirths	Deaths	Natural increase	Infants deaths	per 1000 population			Infant deaths per 1000 livebirths
						Livebirths	Deaths	Natural increase	
1961	31081	519	327	192	26	16.7	10.5	6.2	50.1
1962	31115	518	335	183	31	16.6	10.8	5.8	59.8
1963	31148	431	364	67	19	13.8	11.7	2.1	44.1
1964	31182	445	348	97	20	14.3	11.2	3.1	44.9
1965	31215	495	328	167	23	15.9	10.5	5.4	46.5
1966	31249	441	340	101	16	14.1	10.9	3.2	36.3
1967	31282	414	392	22	19	13.2	12.5	0.7	45.9
1968	31316	413	359	54	18	13.2	11.5	1.7	43.6
1969	31349	405	396	9	15	12.9	12.6	0.3	37.0
1970	31383	398	402	-4	6	12.7	12.8	-0.1	15.1
1971	31416	404	433	-29	9	12.9	13.8	-0.9	22.3
1972	31326	416	390	26	16	13.3	12.4	0.9	38.5
1973	31237	436	402	34	11	14.0	12.9	1.1	25.2
1974	31147	387	422	-35	12	12.4	13.5	-1.1	31.0
1975	31057	397	386	11	6	12.8	12.4	0.4	15.1
1976	30968	440	424	16	6	14.2	13.7	0.5	13.6
1977	30878	416	423	-7	7	13.5	13.7	-0.2	16.8
1978	30788	422	450	-28	9	13.7	14.6	-0.9	21.3
1979	30698	414	437	-23	8	13.5	14.2	-0.7	19.3
1980	30609	413	476	-63	1	13.5	15.6	-2.1	2.4
1981	30519	406	422	-16	4	13.3	13.8	-0.5	9.9
1982	30345	356	440	-84	3	11.7	14.5	-2.8	8.4
1983	30171	351	456	-105	5	11.6	15.1	-3.5	14.2
1984	29997	380	430	-50	3	12.7	14.3	-1.6	7.9
1985	29823	358	417	-59	4	12.0	14.0	-2.0	11.2
1986	29648	372	432	-60	5	12.5	14.6	-2.1	13.4
1987	29475	387	465	-78	4	13.1	15.8	-2.7	10.3
1988	29301	386	459	-73	4	13.2	15.7	-2.5	10.4
1989	29128	343	435	-92	3	11.8	14.9	-3.1	8.7
1990	28954	323	454	-131	2	11.2	15.7	-4.5	6.2
1991	28779	271	455	-184	3	9.4	15.8	-6.4	11.1
1992	28566	332	449	-117	2	11.6	15.7	-4.1	6.0
1993	28354	304	469	-165	2	10.7	16.5	-5.8	6.6
1994	28141	293	410	-117	5	10.4	14.6	-4.2	17.1
1995	27928	338	449	-111	3	12.1	16.1	-4.0	8.9
1996	27716	313	485	-172	2	11.3	17.5	-6.2	6.4
1997	27503	323	427	-104	5	11.7	15.5	-3.8	15.5
1998	27291	268	483	-215	2	9.8	17.7	-7.9	7.5
1999	27078	242	425	-183	0	8.9	15.7	-6.8	0.0
2000	26865	273	482	-209	0	10.2	17.9	-7.7	0.0
2001	26653	235	429	-194	2	8.8	16.1	-7.3	8.5
2002	25531	248	468	-220	1	9.7	18.3	-8.6	4.0
2003	25341	255	428	-173	2	10.1	16.9	-6.8	7.8
2004	25155	228	442	-214	1	9.1	17.6	-8.5	4.4
2005	24930	234	480	-246	2	9.4	19.3	-9.9	8.5

Table. Natural changes of population, Senta

Year	Number of population	Livebirths	Deaths	Natural increase	Infants deaths	per 1000 population			Infant deaths per 1000 livebirths
						Livebirths	Deaths	Natural increase	
2006	24673	231	433	-202	3	9.4	17.5	-8.1	13.0
2007	24457	217	430	-213	1	8.9	17.6	-8.7	4.6
2008	24288	208	377	-169	0	8.6	15.5	-6.9	0.0
2009	24156	206	398	-192	2	8.5	16.5	-8.0	9.7
2010	24060	225	364	-139	2	9.4	15.1	-5.8	8.9
2011	23329	178	388	-210	0	7.6	16.6	-9.0	0.0
2012	23125	201	370	-169	0	8.7	16.0	-7.3	0.0
2013	22933	208	393	-185	0	9.1	17.1	-8.1	0.0
2014	22705	202	407	-205	0	8.9	17.9	-9.0	0.0
2015	22490	214	390	-176	2	9.5	17.3	-7.8	9.3
2016	22302	190	389	-199	1	8.5	17.4	-8.9	5.3
2017	22100	199	364	-165	3	9.0	16.5	-7.5	15.1
2018	21876	180	390	-210	0	8.2	17.8	-9.6	0.0
2019	21630	188	435	-247	3	8.7	20.1	-11.4	16.0
2020	21376	167	410	-243	0	7.8	19.2	-11.4	0.0
2021	21120	163	450	-287	0	7.7	21.3	-13.6	0.0
2022	18048	151	432	-281	1	8.4	23.9	-15.6	6.6

Source: Vital Statistics, SORS

Definitions

Population size

Number of population in the respective year. The data on the number of population in 1961, 1971, 1981 and 1991 are census data, while for the inter-census years the number of population was calculated as an average inter-census difference. From 2002 are given the population estimates that were calculated according to the census of population results and the annual statistics of natural mechanical population movements.

Livebirths

Absolute number of live births in the course of a year. Live born child means a child giving vital signs after birth (breathing, i.e. heartbeat), even for the shortest time, regardless the mother's pregnancy duration.

Deaths

Absolute number of deaths in the course of a year. Deceased is a person that whenever after having been born live, shows permanently stopped vital signs.

Natural increase

Natural population increase is the number of live births minus the number of deaths.

Infants deaths

Absolute number of infants deaths in the course of a year. Deceased infant is a child that after having been born live and before aged one year, shows permanently stopped vital signs.

Livebirths, per 1 000 population

Livebirths rate is the ratio of the number of live births and the population size in the respective year. The number of live births is divided by the population size and then multiplied by 1000.

Deaths, per 1 000 population

General mortality rate represents the ratio between the number of deaths and the population size in the respective year. The number of deaths is divided by population size and then multiplied by 1000.

Natural increase, per 1 000 population

Natural population increase rate is the difference between the number of live births and the number of deaths, in relation to the population size in the respective year.

Natural population increase rate = (number of live births - number of deaths) / population size * 1000

Infants deaths, per 1 000 livebirths

Infant mortality rate is the ratio of deceased children under 1 year of age and live births in the respective year. The mortality rate is expressed per 1000 live births.

Infant mortality rate = (number of deceased children under 1 year of age / number of live births) * 1000

Additional info:



Download all database data in Excel format:

[Data](#)



DevInfo profiles:

devinfo.stat.gov.rs/SerbiaProfileLauncher/?lang=en



DevInfo online database:

devinfo.stat.gov.rs/vitalna



For additional information or questions please contact:

devinfo@stat.gov.rs