

# Natural changes of population 1961 – 2022

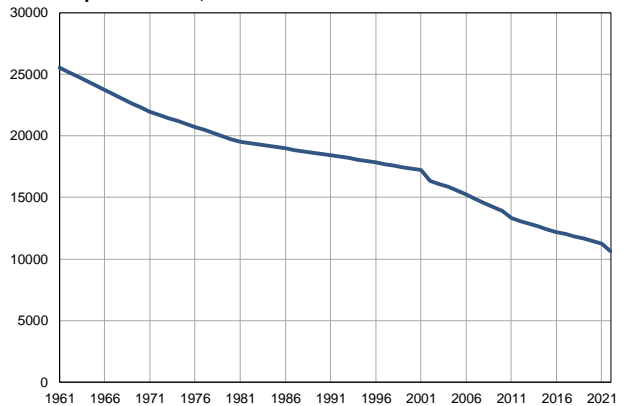
Profile  
July 2023

## Sečanj

	1961	2022
Population size	25519	10615
Livebirths, Number	476	87
Deaths, Number	245	245
Natural increase, Number	231	-158
Infants deaths, Number	37	0
Livebirths, per 1,000 population	19	8
Deaths, per 1,000 population	10	23
Natural increase, per 1,000 population	9	-15
Infants deaths, per 1,000 livebirths	78	0

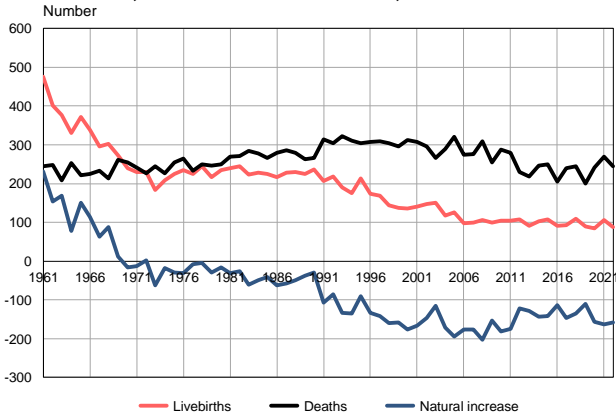
Source: Vital Statistics, SORS

Population size, 1961–2022



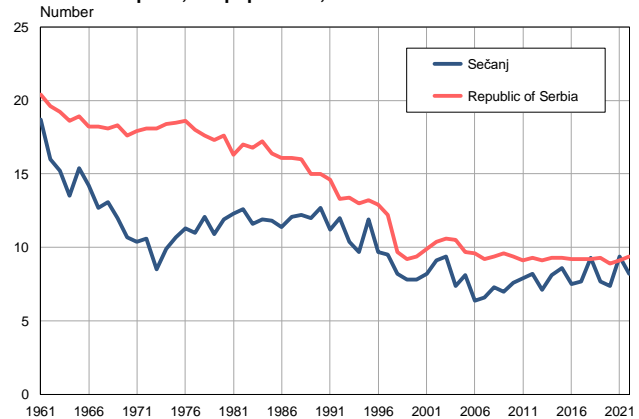
Source: Vital Statistics, SORS

Livebirths, deaths and natural increase, 1961–2022



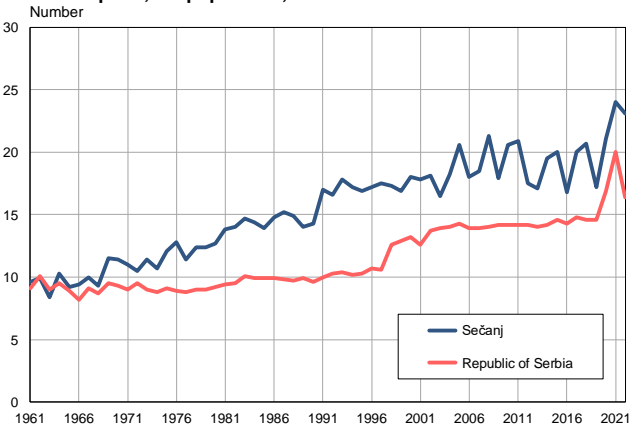
Source: Vital Statistics, SORS

Livebirths per 1,000 population, 1961–2022



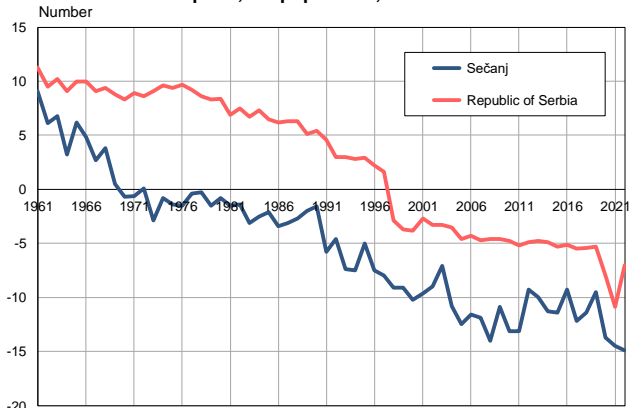
Source: Vital Statistics, SORS

Deaths per 1,000 population, 1961–2022



Source: Vital Statistics, SORS

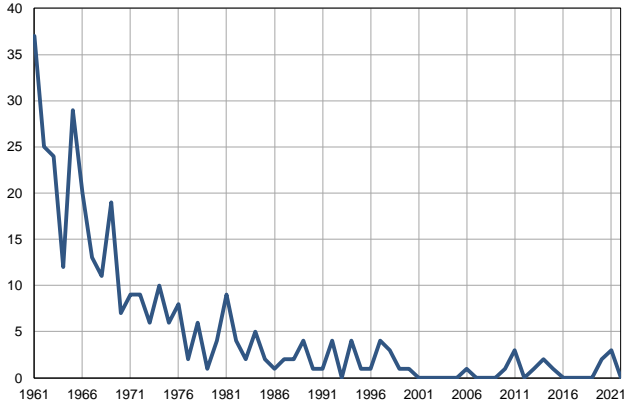
Natural increase per 1,000 population, 1961–2022



Source: Vital Statistics, SORS

**Infants deaths, 1961–2022**

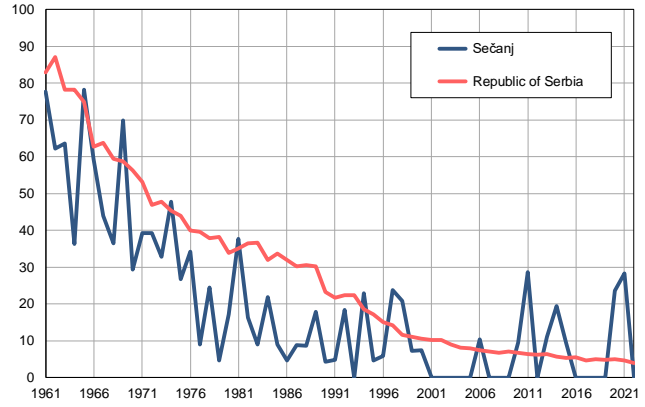
Number



Source: Vital Statistics, SORS

**Infants deaths per 1,000 livebirths, 1961–2022**

Number



Source: Vital Statistics, SORS

**Table. Natural changes of population, Sečanj**

Year	Number of population	Livebirths	Deaths	Natural increase	Infants deaths	per 1000 population			Infant deaths per 1000 livebirths
						Livebirths	Deaths	Natural increase	
1961	25519	476	245	231	37	18.7	9.6	9.1	77.7
1962	25161	402	248	154	25	16.0	9.9	6.1	62.2
1963	24803	377	208	169	24	15.2	8.4	6.8	63.7
1964	24445	331	253	78	12	13.5	10.3	3.2	36.3
1965	24087	371	221	150	29	15.4	9.2	6.2	78.2
1966	23729	338	224	114	20	14.2	9.4	4.8	59.2
1967	23370	296	233	63	13	12.7	10.0	2.7	43.9
1968	23012	302	214	88	11	13.1	9.3	3.8	36.4
1969	22654	272	261	11	19	12.0	11.5	0.5	69.9
1970	22296	239	255	-16	7	10.7	11.4	-0.7	29.3
1971	21938	229	242	-13	9	10.4	11.0	-0.6	39.3
1972	21694	229	227	2	9	10.6	10.5	0.1	39.3
1973	21450	183	245	-62	6	8.5	11.4	-2.9	32.8
1974	21206	209	227	-18	10	9.9	10.7	-0.8	47.8
1975	20963	224	254	-30	6	10.7	12.1	-1.4	26.8
1976	20720	234	265	-31	8	11.3	12.8	-1.5	34.2
1977	20476	225	233	-8	2	11.0	11.4	-0.4	8.9
1978	20232	245	250	-5	6	12.1	12.4	-0.3	24.5
1979	19988	217	247	-30	1	10.9	12.4	-1.5	4.6
1980	19745	234	250	-16	4	11.9	12.7	-0.8	17.1
1981	19501	239	270	-31	9	12.3	13.8	-1.5	37.7
1982	19394	245	271	-26	4	12.6	14.0	-1.4	16.3
1983	19288	223	284	-61	2	11.6	14.7	-3.1	9.0
1984	19182	228	277	-49	5	11.9	14.4	-2.5	21.9
1985	19076	225	266	-41	2	11.8	13.9	-2.1	8.9
1986	18970	217	280	-63	1	11.4	14.8	-3.4	4.6
1987	18863	228	286	-58	2	12.1	15.2	-3.1	8.8
1988	18757	229	279	-50	2	12.2	14.9	-2.7	8.7
1989	18651	224	262	-38	4	12.0	14.0	-2.0	17.9
1990	18544	236	266	-30	1	12.7	14.3	-1.6	4.2
1991	18438	207	314	-107	1	11.2	17.0	-5.8	4.8
1992	18316	219	304	-85	4	12.0	16.6	-4.6	18.3
1993	18193	190	323	-133	0	10.4	17.8	-7.4	0.0
1994	18071	175	311	-136	4	9.7	17.2	-7.5	22.9
1995	17949	214	304	-90	1	11.9	16.9	-5.0	4.7
1996	17826	173	307	-134	1	9.7	17.2	-7.5	5.8
1997	17704	168	309	-141	4	9.5	17.5	-8.0	23.8
1998	17581	144	304	-160	3	8.2	17.3	-9.1	20.8
1999	17459	137	295	-158	1	7.8	16.9	-9.1	7.3
2000	17337	135	312	-177	1	7.8	18.0	-10.2	7.4
2001	17214	141	307	-166	0	8.2	17.8	-9.6	0.0
2002	16322	148	295	-147	0	9.1	18.1	-9.0	0.0
2003	16104	151	266	-115	0	9.4	16.5	-7.1	0.0
2004	15862	117	289	-172	0	7.4	18.2	-10.8	0.0
2005	15568	126	321	-195	0	8.1	20.6	-12.5	0.0

**Table. Natural changes of population, Sečanj**

Year	Number of population	Livebirths	Deaths	Natural increase	Infants deaths	per 1000 population			Infant deaths per 1000 livebirths
						Livebirths	Deaths	Natural increase	
2006	15245	97	274	-177	1	6.4	18.0	-11.6	10.3
2007	14899	99	276	-177	0	6.6	18.5	-11.9	0.0
2008	14530	106	309	-203	0	7.3	21.3	-14.0	0.0
2009	14191	100	254	-154	0	7.0	17.9	-10.9	0.0
2010	13905	105	287	-182	1	7.6	20.6	-13.1	9.5
2011	13325	105	279	-174	3	7.9	20.9	-13.1	28.6
2012	13067	107	229	-122	0	8.2	17.5	-9.3	0.0
2013	12843	91	219	-128	1	7.1	17.1	-10.0	11.0
2014	12640	103	246	-143	2	8.1	19.5	-11.3	19.4
2015	12419	107	249	-142	1	8.6	20.0	-11.4	9.3
2016	12210	91	205	-114	0	7.5	16.8	-9.3	0.0
2017	12021	93	240	-147	0	7.7	20.0	-12.2	0.0
2018	11825	110	245	-135	0	9.3	20.7	-11.4	0.0
2019	11642	90	200	-110	0	7.7	17.2	-9.5	0.0
2020	11444	85	242	-157	2	7.4	21.1	-13.7	23.5
2021	11226	106	269	-163	3	9.4	24.0	-14.5	28.3
2022	10615	87	245	-158	0	8.2	23.1	-14.9	0.0

Source: Vital Statistics, SORS

## Definitions

### Population size

Number of population in the respective year. The data on the number of population in 1961, 1971, 1981 and 1991 are census data, while for the inter-census years the number of population was calculated as an average inter-census difference. From 2002 are given the population estimates that were calculated according to the census of population results and the annual statistics of natural mechanical population movements.

### Livebirths

Absolute number of live births in the course of a year. Live born child means a child giving vital signs after birth (breathing, i.e. heartbeat), even for the shortest time, regardless the mother's pregnancy duration.

### Deaths

Absolute number of deaths in the course of a year. Deceased is a person that whenever after having been born live, shows permanently stopped vital signs.

### Natural increase

Natural population increase is the number of live births minus the number of deaths.

### Infants deaths

Absolute number of infants deaths in the course of a year. Deceased infant is a child that after having been born live and before aged one year, shows permanently stopped vital signs.

### Livebirths, per 1 000 population

Livebirths rate is the ratio of the number of live births and the population size in the respective year. The number of live births is divided by the population size and then multiplied by 1000.

### Deaths, per 1 000 population

General mortality rate represents the ratio between the number of deaths and the population size in the respective year. The number of deaths is divided by population size and then multiplied by 1000.

### Natural increase, per 1 000 population

Natural population increase rate is the difference between the number of live births and the number of deaths, in relation to the population size in the respective year.

Natural population increase rate = (number of live births - number of deaths) / population size \* 1000

### Infants deaths, per 1 000 livebirths

Infant mortality rate is the ratio of deceased children under 1 year of age and live births in the respective year. The mortality rate is expressed per 1000 live births.

Infant mortality rate = (number of deceased children under 1 year of age / number of live births) \* 1000

## Additional info:



Download all database data in Excel format:

[Data](#)



DevInfo profiles:

[devinfo.stat.gov.rs/SerbiaProfileLauncher/?lang=en](http://devinfo.stat.gov.rs/SerbiaProfileLauncher/?lang=en)



DevInfo online database:

[devinfo.stat.gov.rs/vitalna](http://devinfo.stat.gov.rs/vitalna)



For additional information or questions please contact:

[devinfo@stat.gov.rs](mailto:devinfo@stat.gov.rs)