

Natural changes of population 1961 – 2022

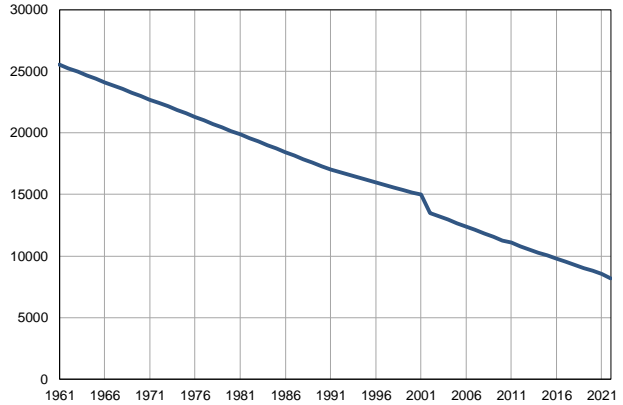
Profile
July 2023

Rekovac

	1961	2022
Population size	25520	8161
Livebirths, Number	276	44
Deaths, Number	252	221
Natural increase, Number	24	-177
Infants deaths, Number	16	0
Livebirths, per 1,000 population	11	5
Deaths, per 1,000 population	10	27
Natural increase, per 1,000 population	1	-22
Infants deaths, per 1,000 livebirths	58	0

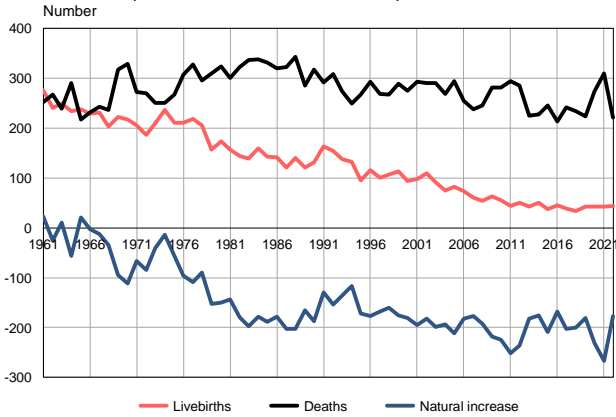
Source: Vital Statistics, SORS

Population size, 1961–2022



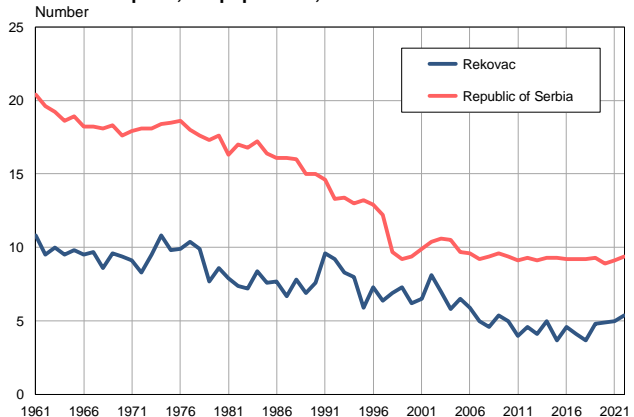
Source: Vital Statistics, SORS

Livebirths, deaths and natural increase, 1961–2022



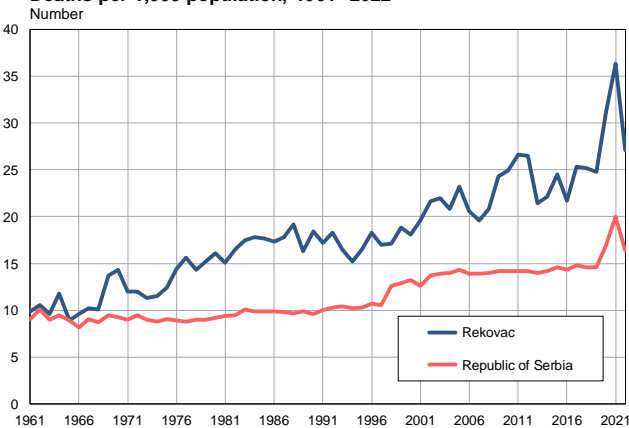
Source: Vital Statistics, SORS

Livebirths per 1,000 population, 1961–2022



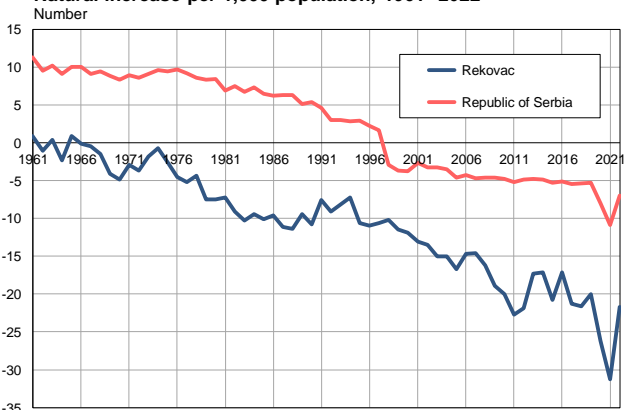
Source: Vital Statistics, SORS

Deaths per 1,000 population, 1961–2022



Source: Vital Statistics, SORS

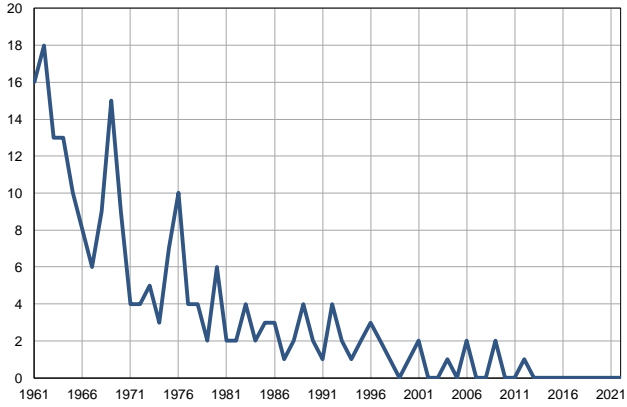
Natural increase per 1,000 population, 1961–2022



Source: Vital Statistics, SORS

Infants deaths, 1961–2022

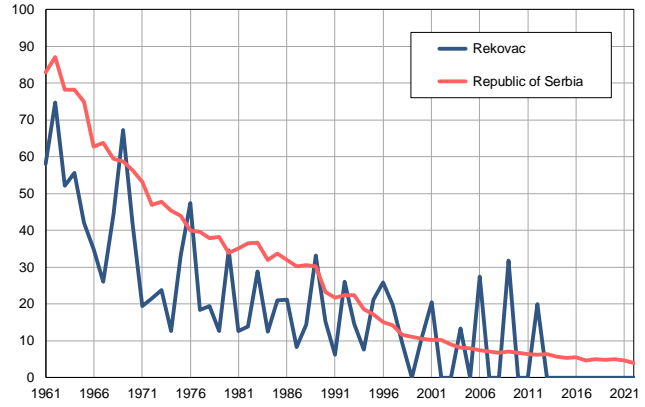
Number



Source: Vital Statistics, SORS

Infants deaths per 1,000 livebirths, 1961–2022

Number



Source: Vital Statistics, SORS

Table. Natural changes of population, Rekovac

Year	Number of population	Livebirths	Deaths	Natural increase	Infants deaths	per 1000 population			Infant deaths per 1000 livebirths
						Livebirths	Deaths	Natural increase	
1961	25520	276	252	24	16	10.8	9.9	0.9	58.0
1962	25239	241	267	-26	18	9.5	10.6	-1.1	74.7
1963	24958	249	239	10	13	10.0	9.6	0.4	52.2
1964	24677	234	290	-56	13	9.5	11.8	-2.3	55.6
1965	24396	238	217	21	10	9.8	8.9	0.9	42.0
1966	24114	229	231	-2	8	9.5	9.6	-0.1	34.9
1967	23834	231	243	-12	6	9.7	10.2	-0.5	26.0
1968	23553	203	237	-34	9	8.6	10.1	-1.5	44.3
1969	23272	223	318	-95	15	9.6	13.7	-4.1	67.3
1970	22991	217	329	-112	9	9.4	14.3	-4.9	41.5
1971	22710	206	273	-67	4	9.1	12.0	-2.9	19.4
1972	22427	186	270	-84	4	8.3	12.0	-3.7	21.5
1973	22143	210	251	-41	5	9.5	11.3	-1.8	23.8
1974	21860	237	251	-14	3	10.8	11.5	-0.7	12.7
1975	21577	211	267	-56	7	9.8	12.4	-2.6	33.2
1976	21294	211	307	-96	10	9.9	14.4	-4.5	47.4
1977	21010	219	328	-109	4	10.4	15.6	-5.2	18.3
1978	20727	206	296	-90	4	9.9	14.3	-4.4	19.4
1979	20444	157	310	-153	2	7.7	15.2	-7.5	12.7
1980	20160	174	324	-150	6	8.6	16.1	-7.5	34.5
1981	19877	157	301	-144	2	7.9	15.1	-7.2	12.7
1982	19590	144	323	-179	2	7.4	16.5	-9.1	13.9
1983	19304	139	337	-198	4	7.2	17.5	-10.3	28.8
1984	19017	160	338	-178	2	8.4	17.8	-9.4	12.5
1985	18731	143	331	-188	3	7.6	17.7	-10.1	21.0
1986	18444	142	320	-178	3	7.7	17.3	-9.6	21.1
1987	18156	121	323	-202	1	6.7	17.8	-11.1	8.3
1988	17871	140	343	-203	2	7.8	19.2	-11.4	14.3
1989	17584	121	286	-165	4	6.9	16.3	-9.4	33.1
1990	17299	131	318	-187	2	7.6	18.4	-10.8	15.3
1991	17011	163	292	-129	1	9.6	17.2	-7.6	6.1
1992	16807	154	308	-154	4	9.2	18.3	-9.1	26.0
1993	16602	138	274	-136	2	8.3	16.5	-8.2	14.5
1994	16398	132	249	-117	1	8.0	15.2	-7.2	7.6
1995	16194	95	267	-172	2	5.9	16.5	-10.6	21.1
1996	15991	116	293	-177	3	7.3	18.3	-11.0	25.9
1997	15785	101	269	-168	2	6.4	17.0	-10.6	19.8
1998	15581	107	267	-160	1	6.9	17.1	-10.2	9.3
1999	15377	113	289	-176	0	7.3	18.8	-11.5	0.0
2000	15173	94	275	-181	1	6.2	18.1	-11.9	10.6
2001	14968	98	293	-195	2	6.5	19.6	-13.1	20.4
2002	13489	109	291	-182	0	8.1	21.6	-13.5	0.0
2003	13213	92	291	-199	0	7.0	22.0	-15.0	0.0
2004	12941	75	269	-194	1	5.8	20.8	-15.0	13.3
2005	12662	82	294	-212	0	6.5	23.2	-16.7	0.0

Table. Natural changes of population, Rekovac

Year	Number of population	Livebirths	Deaths	Natural increase	Infants deaths	per 1000 population			Infant deaths per 1000 livebirths
						Livebirths	Deaths	Natural increase	
2006	12388	73	255	-182	2	5.9	20.6	-14.7	27.4
2007	12122	61	238	-177	0	5.0	19.6	-14.6	0.0
2008	11845	54	246	-192	0	4.6	20.8	-16.2	0.0
2009	11567	63	281	-218	2	5.4	24.3	-18.9	31.7
2010	11275	56	281	-225	0	5.0	24.9	-20.0	0.0
2011	11081	44	295	-251	0	4.0	26.6	-22.7	0.0
2012	10792	50	286	-236	1	4.6	26.5	-21.9	20.0
2013	10525	43	225	-182	0	4.1	21.4	-17.3	0.0
2014	10285	51	227	-176	0	5.0	22.1	-17.1	0.0
2015	10035	37	246	-209	0	3.7	24.5	-20.8	0.0
2016	9802	45	213	-168	0	4.6	21.7	-17.1	0.0
2017	9552	39	242	-203	0	4.1	25.3	-21.3	0.0
2018	9270	34	234	-200	0	3.7	25.2	-21.6	0.0
2019	9037	43	224	-181	0	4.8	24.8	-20.0	0.0
2020	8811	43	274	-231	0	4.9	31.1	-26.2	0.0
2021	8537	43	310	-267	0	5.0	36.3	-31.3	0.0
2022	8161	44	221	-177	0	5.4	27.1	-21.7	0.0

Source: Vital Statistics, SORS

Definitions

Population size

Number of population in the respective year. The data on the number of population in 1961, 1971, 1981 and 1991 are census data, while for the inter-census years the number of population was calculated as an average inter-census difference. From 2002 are given the population estimates that were calculated according to the census of population results and the annual statistics of natural mechanical population movements.

Livebirths

Absolute number of live births in the course of a year. Live born child means a child giving vital signs after birth (breathing, i.e. heartbeat), even for the shortest time, regardless the mother's pregnancy duration.

Deaths

Absolute number of deaths in the course of a year. Deceased is a person that whenever after having been born live, shows permanently stopped vital signs.

Natural increase

Natural population increase is the number of live births minus the number of deaths.

Infants deaths

Absolute number of infants deaths in the course of a year. Deceased infant is a child that after having been born live and before aged one year, shows permanently stopped vital signs.

Livebirths, per 1 000 population

Livebirths rate is the ratio of the number of live births and the population size in the respective year. The number of live births is divided by the population size and then multiplied by 1000.

Deaths, per 1 000 population

General mortality rate represents the ratio between the number of deaths and the population size in the respective year. The number of deaths is divided by population size and then multiplied by 1000.

Natural increase, per 1 000 population

Natural population increase rate is the difference between the number of live births and the number of deaths, in relation to the population size in the respective year.

Natural population increase rate = (number of live births - number of deaths) / population size * 1000

Infants deaths, per 1 000 livebirths

Infant mortality rate is the ratio of deceased children under 1 year of age and live births in the respective year. The mortality rate is expressed per 1000 live births.

Infant mortality rate = (number of deceased children under 1 year of age / number of live births) * 1000

Additional info:



Download all database data in Excel format:

[Data](#)



DevInfo profiles:

devinfo.stat.gov.rs/SerbiaProfileLauncher/?lang=en



DevInfo online database:

devinfo.stat.gov.rs/vitalna



For additional information or questions please contact:

devinfo@stat.gov.rs