

# Natural changes of population 1961 – 2022

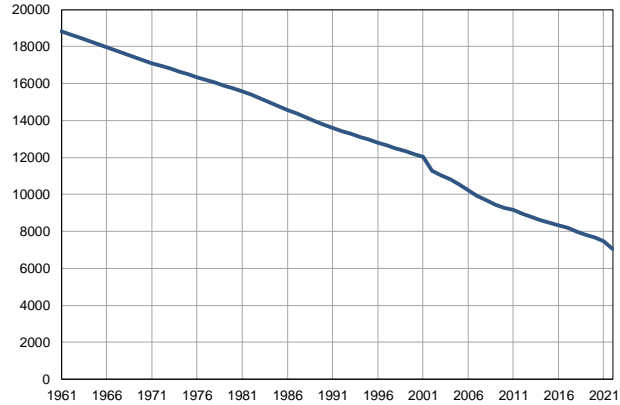
Profile  
July 2023

## Ražanj

	1961	2022
Population size	18829	7041
Livebirths, Number	208	33
Deaths, Number	160	197
Natural increase, Number	48	-164
Infants deaths, Number	8	0
Livebirths, per 1,000 population	11	5
Deaths, per 1,000 population	9	28
Natural increase, per 1,000 population	3	-23
Infants deaths, per 1,000 livebirths	39	0

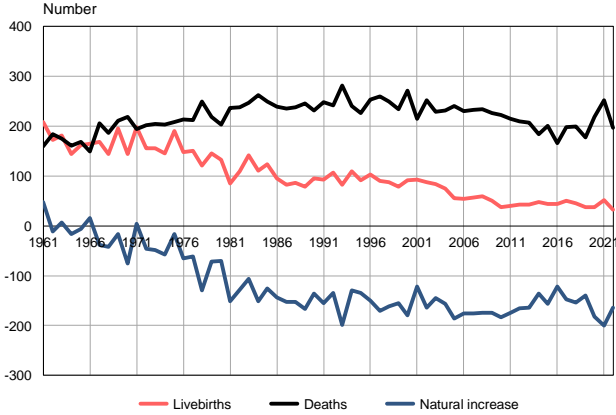
Source: Vital Statistics, SORS

Population size, 1961–2022



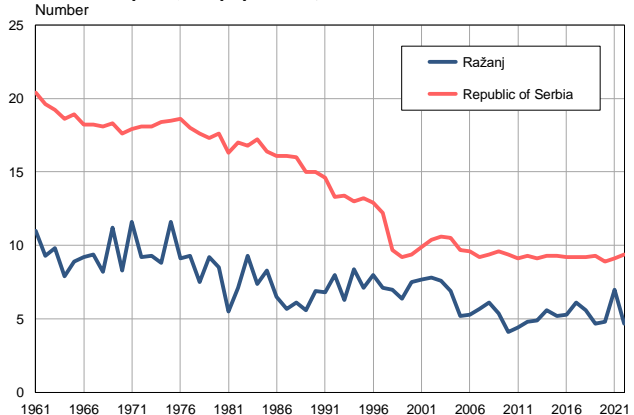
Source: Vital Statistics, SORS

Livebirths, deaths and natural increase, 1961–2022



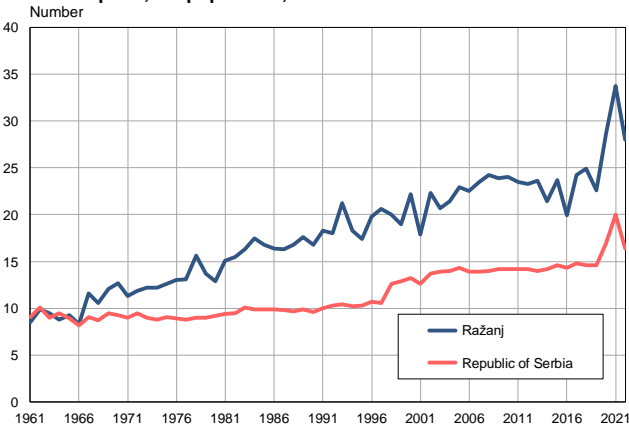
Source: Vital Statistics, SORS

Livebirths per 1,000 population, 1961–2022



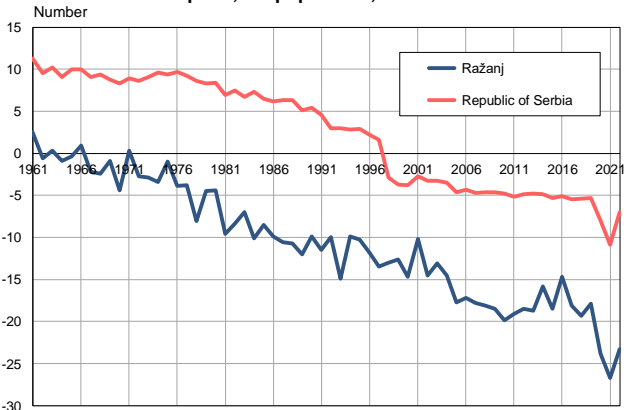
Source: Vital Statistics, SORS

Deaths per 1,000 population, 1961–2022



Source: Vital Statistics, SORS

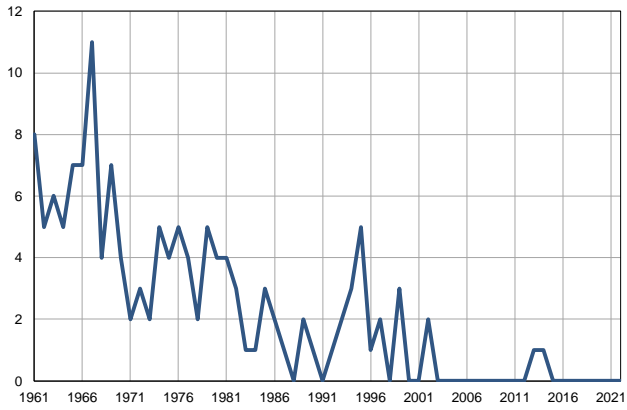
Natural increase per 1,000 population, 1961–2022



Source: Vital Statistics, SORS

**Infants deaths, 1961–2022**

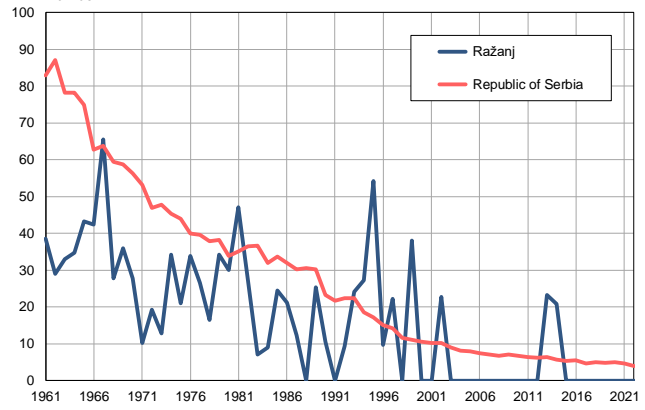
Number



Source: Vital Statistics, SORS

**Infants deaths per 1,000 livebirths, 1961–2022**

Number



Source: Vital Statistics, SORS

**Table. Natural changes of population, Ražanj**

Year	Number of population	Livebirths	Deaths	Natural increase	Infants deaths	per 1000 population			Infant deaths per 1000 livebirths
						Livebirths	Deaths	Natural increase	
1961	18829	208	160	48	8	11.0	8.5	2.5	38.5
1962	18657	173	184	-11	5	9.3	9.9	-0.6	28.9
1963	18486	182	175	7	6	9.8	9.5	0.3	33.0
1964	18314	144	161	-17	5	7.9	8.8	-0.9	34.7
1965	18143	162	168	-6	7	8.9	9.3	-0.4	43.2
1966	17971	165	149	16	7	9.2	8.3	0.9	42.4
1967	17799	168	206	-38	11	9.4	11.6	-2.2	65.5
1968	17628	144	186	-42	4	8.2	10.6	-2.4	27.8
1969	17456	195	211	-16	7	11.2	12.1	-0.9	35.9
1970	17285	144	219	-75	4	8.3	12.7	-4.4	27.8
1971	17113	198	194	4	2	11.6	11.3	0.3	10.1
1972	16960	156	202	-46	3	9.2	11.9	-2.7	19.2
1973	16808	156	205	-49	2	9.3	12.2	-2.9	12.8
1974	16655	146	203	-57	5	8.8	12.2	-3.4	34.2
1975	16502	191	208	-17	4	11.6	12.6	-1.0	20.9
1976	16350	148	213	-65	5	9.1	13.0	-3.9	33.8
1977	16197	151	212	-61	4	9.3	13.1	-3.8	26.5
1978	16044	121	250	-129	2	7.5	15.6	-8.1	16.5
1979	15891	146	218	-72	5	9.2	13.7	-4.5	34.2
1980	15739	133	203	-70	4	8.5	12.9	-4.4	30.1
1981	15586	85	236	-151	4	5.5	15.1	-9.6	47.1
1982	15385	110	238	-128	3	7.1	15.5	-8.4	27.3
1983	15185	141	247	-106	1	9.3	16.3	-7.0	7.1
1984	14985	111	262	-151	1	7.4	17.5	-10.1	9.0
1985	14784	123	249	-126	3	8.3	16.8	-8.5	24.4
1986	14584	95	239	-144	2	6.5	16.4	-9.9	21.1
1987	14384	82	235	-153	1	5.7	16.3	-10.6	12.2
1988	14183	86	238	-152	0	6.1	16.8	-10.7	0.0
1989	13984	79	246	-167	2	5.6	17.6	-12.0	25.3
1990	13783	95	231	-136	1	6.9	16.8	-9.9	10.5
1991	13582	93	248	-155	0	6.8	18.3	-11.5	0.0
1992	13427	107	242	-135	1	8.0	18.0	-10.0	9.3
1993	13272	83	282	-199	2	6.3	21.2	-14.9	24.1
1994	13116	110	240	-130	3	8.4	18.3	-9.9	27.3
1995	12961	92	226	-134	5	7.1	17.4	-10.3	54.3
1996	12806	103	253	-150	1	8.0	19.8	-11.8	9.7
1997	12651	90	260	-170	2	7.1	20.6	-13.5	22.2
1998	12497	88	250	-162	0	7.0	20.0	-13.0	0.0
1999	12342	79	234	-155	3	6.4	19.0	-12.6	38.0
2000	12186	92	271	-179	0	7.5	22.2	-14.7	0.0
2001	12031	93	215	-122	0	7.7	17.9	-10.2	0.0
2002	11290	88	252	-164	2	7.8	22.3	-14.5	22.7
2003	11048	84	229	-145	0	7.6	20.7	-13.1	0.0
2004	10813	75	231	-156	0	6.9	21.4	-14.5	0.0
2005	10539	55	241	-186	0	5.2	22.9	-17.7	0.0

**Table. Natural changes of population, Ražanj**

Year	Number of population	Livebirths	Deaths	Natural increase	Infants deaths	per 1000 population			Infant deaths per 1000 livebirths
						Livebirths	Deaths	Natural increase	
2006	10227	54	230	-176	0	5.3	22.5	-17.2	0.0
2007	9927	57	233	-176	0	5.7	23.5	-17.8	0.0
2008	9667	59	234	-175	0	6.1	24.2	-18.1	0.0
2009	9454	51	226	-175	0	5.4	23.9	-18.5	0.0
2010	9263	38	222	-184	0	4.1	24.0	-19.9	0.0
2011	9157	40	215	-175	0	4.4	23.5	-19.1	0.0
2012	8958	43	209	-166	0	4.8	23.3	-18.5	0.0
2013	8767	43	207	-164	1	4.9	23.6	-18.7	23.3
2014	8614	48	184	-136	1	5.6	21.4	-15.8	20.8
2015	8468	44	201	-157	0	5.2	23.7	-18.5	0.0
2016	8323	44	166	-122	0	5.3	19.9	-14.7	0.0
2017	8176	50	198	-148	0	6.1	24.2	-18.1	0.0
2018	7998	45	199	-154	0	5.6	24.9	-19.3	0.0
2019	7829	37	177	-140	0	4.7	22.6	-17.9	0.0
2020	7664	37	219	-182	0	4.8	28.6	-23.8	0.0
2021	7482	52	252	-200	0	7.0	33.7	-26.7	0.0
2022	7041	33	197	-164	0	4.7	28.0	-23.3	0.0

Source: Vital Statistics, SORS

## Definitions

### Population size

Number of population in the respective year. The data on the number of population in 1961, 1971, 1981 and 1991 are census data, while for the inter-census years the number of population was calculated as an average inter-census difference. From 2002 are given the population estimates that were calculated according to the census of population results and the annual statistics of natural mechanical population movements.

### Livebirths

Absolute number of live births in the course of a year. Live born child means a child giving vital signs after birth (breathing, i.e. heartbeat), even for the shortest time, regardless the mother's pregnancy duration.

### Deaths

Absolute number of deaths in the course of a year. Deceased is a person that whenever after having been born live, shows permanently stopped vital signs.

### Natural increase

Natural population increase is the number of live births minus the number of deaths.

### Infants deaths

Absolute number of infants deaths in the course of a year. Deceased infant is a child that after having been born live and before aged one year, shows permanently stopped vital signs.

### Livebirths, per 1 000 population

Livebirths rate is the ratio of the number of live births and the population size in the respective year. The number of live births is divided by the population size and then multiplied by 1000.

### Deaths, per 1 000 population

General mortality rate represents the ratio between the number of deaths and the population size in the respective year. The number of deaths is divided by population size and then multiplied by 1000.

### Natural increase, per 1 000 population

Natural population increase rate is the difference between the number of live births and the number of deaths, in relation to the population size in the respective year.

Natural population increase rate = (number of live births - number of deaths) / population size \* 1000

### Infants deaths, per 1 000 livebirths

Infant mortality rate is the ratio of deceased children under 1 year of age and live births in the respective year. The mortality rate is expressed per 1000 live births.

Infant mortality rate = (number of deceased children under 1 year of age / number of live births) \* 1000

## Additional info:



Download all database data in Excel format:

[Data](#)



DevInfo profiles:

[devinfo.stat.gov.rs/SerbiaProfileLauncher/?lang=en](http://devinfo.stat.gov.rs/SerbiaProfileLauncher/?lang=en)



DevInfo online database:

[devinfo.stat.gov.rs/vitalna](http://devinfo.stat.gov.rs/vitalna)



For additional information or questions please contact:

[devinfo@stat.gov.rs](mailto:devinfo@stat.gov.rs)