

Natural changes of population 1961 – 2022

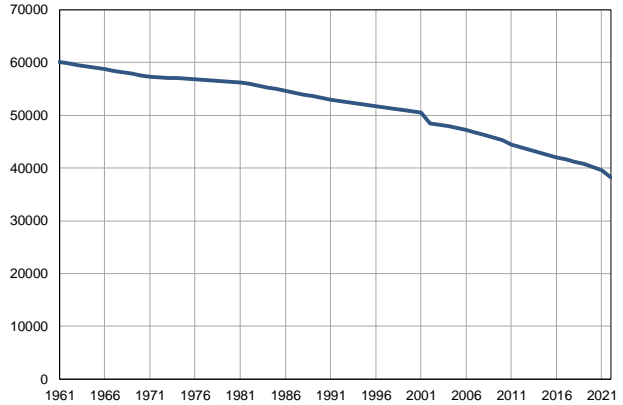
Profile
July 2023

Prokuplje

	1961	2022
Population size	60075	38224
Livebirths, Number	1026	427
Deaths, Number	502	722
Natural increase, Number	524	-295
Infants deaths, Number	65	3
Livebirths, per 1,000 population	17	11
Deaths, per 1,000 population	8	19
Natural increase, per 1,000 population	9	-8
Infants deaths, per 1,000 livebirths	63	7

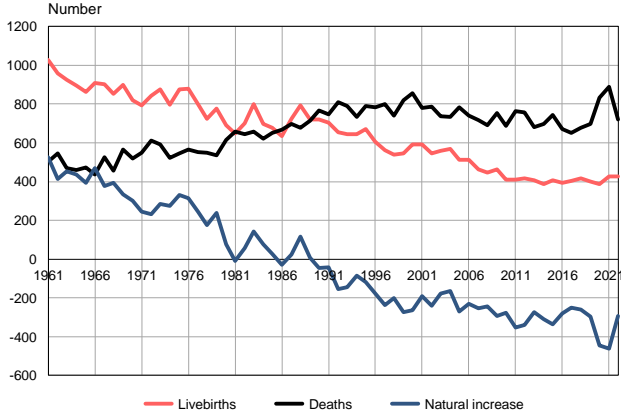
Source: Vital Statistics, SORS

Population size, 1961–2022



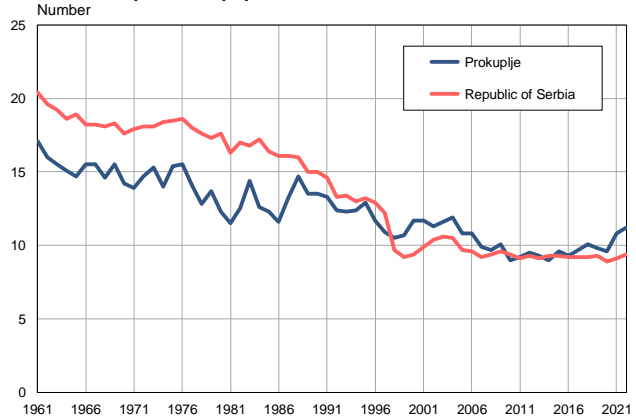
Source: Vital Statistics, SORS

Livebirths, deaths and natural increase, 1961–2022



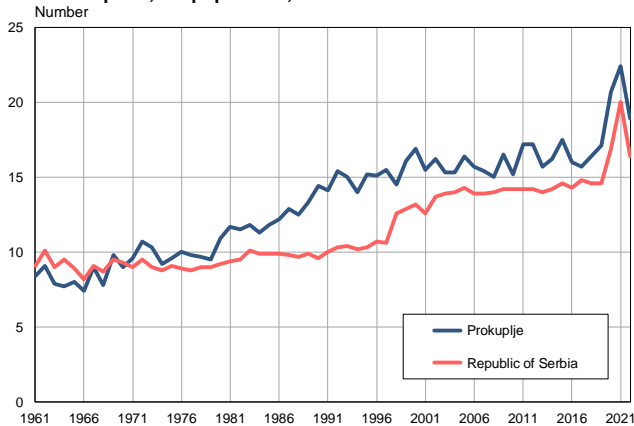
Source: Vital Statistics, SORS

Livebirths per 1,000 population, 1961–2022



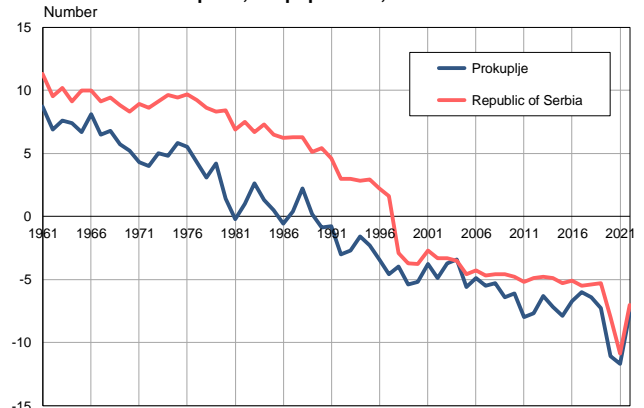
Source: Vital Statistics, SORS

Deaths per 1,000 population, 1961–2022



Source: Vital Statistics, SORS

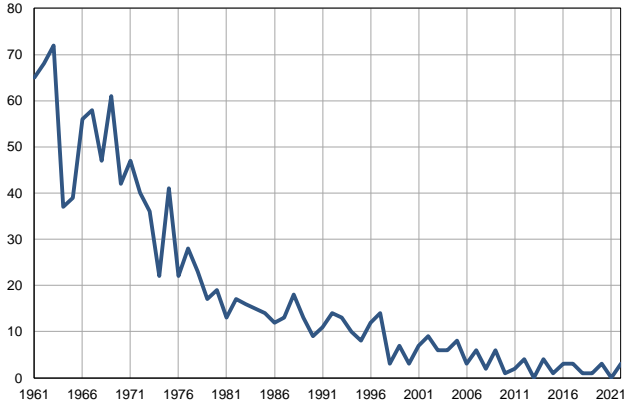
Natural increase per 1,000 population, 1961–2022



Source: Vital Statistics, SORS

Infants deaths, 1961–2022

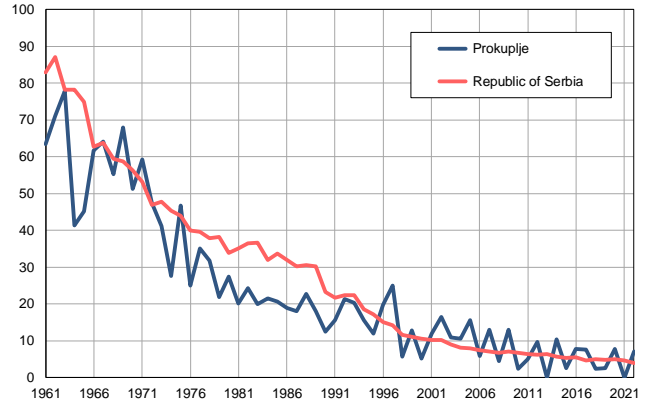
Number



Source: Vital Statistics, SORS

Infants deaths per 1,000 livebirths, 1961–2022

Number



Source: Vital Statistics, SORS

Table. Natural changes of population, Prokuplje

Year	Number of population	Livebirths	Deaths	Natural increase	Infants deaths	per 1000 population			Infant deaths per 1000 livebirths
						Livebirths	Deaths	Natural increase	
1961	60075	1026	502	524	65	17.1	8.4	8.7	63.4
1962	59799	957	544	413	68	16.0	9.1	6.9	71.1
1963	59523	924	471	453	72	15.5	7.9	7.6	77.9
1964	59247	895	458	437	37	15.1	7.7	7.4	41.3
1965	58971	864	472	392	39	14.7	8.0	6.7	45.1
1966	58695	907	437	470	56	15.5	7.4	8.1	61.7
1967	58419	903	527	376	58	15.5	9.0	6.5	64.2
1968	58143	851	456	395	47	14.6	7.8	6.8	55.2
1969	57867	898	565	333	61	15.5	9.8	5.7	67.9
1970	57591	818	518	300	42	14.2	9.0	5.2	51.3
1971	57315	794	548	246	47	13.9	9.6	4.3	59.2
1972	57209	842	610	232	40	14.7	10.7	4.0	47.5
1973	57103	874	591	283	36	15.3	10.3	5.0	41.2
1974	56997	796	523	273	22	14.0	9.2	4.8	27.6
1975	56891	877	546	331	41	15.4	9.6	5.8	46.8
1976	56786	880	566	314	22	15.5	10.0	5.5	25.0
1977	56680	798	553	245	28	14.1	9.8	4.3	35.1
1978	56574	723	549	174	23	12.8	9.7	3.1	31.8
1979	56467	775	537	238	17	13.7	9.5	4.2	21.9
1980	56362	691	614	77	19	12.3	10.9	1.4	27.5
1981	56256	647	658	-11	13	11.5	11.7	-0.2	20.1
1982	55927	700	644	56	17	12.5	11.5	1.0	24.3
1983	55599	799	658	141	16	14.4	11.8	2.6	20.0
1984	55270	697	622	75	15	12.6	11.3	1.3	21.5
1985	54941	677	651	26	14	12.3	11.8	0.5	20.7
1986	54613	636	666	-30	12	11.6	12.2	-0.6	18.9
1987	54284	723	698	25	13	13.3	12.9	0.4	18.0
1988	53955	793	677	116	18	14.7	12.5	2.2	22.7
1989	53626	722	714	8	13	13.5	13.3	0.2	18.0
1990	53297	720	766	-46	9	13.5	14.4	-0.9	12.5
1991	52969	705	748	-43	11	13.3	14.1	-0.8	15.6
1992	52718	654	810	-156	14	12.4	15.4	-3.0	21.4
1993	52467	645	789	-144	13	12.3	15.0	-2.7	20.2
1994	52215	645	732	-87	10	12.4	14.0	-1.6	15.5
1995	51964	670	790	-120	8	12.9	15.2	-2.3	11.9
1996	51713	606	783	-177	12	11.7	15.1	-3.4	19.8
1997	51461	562	798	-236	14	10.9	15.5	-4.6	24.9
1998	51210	540	741	-201	3	10.5	14.5	-4.0	5.6
1999	50959	546	820	-274	7	10.7	16.1	-5.4	12.8
2000	50707	592	855	-263	3	11.7	16.9	-5.2	5.1
2001	50456	590	780	-190	7	11.7	15.5	-3.8	11.9
2002	48459	546	787	-241	9	11.3	16.2	-4.9	16.5
2003	48213	557	736	-179	6	11.6	15.3	-3.7	10.8
2004	47995	569	735	-166	6	11.9	15.3	-3.4	10.5
2005	47653	513	783	-270	8	10.8	16.4	-5.6	15.6

Table. Natural changes of population, Prokuplje

Year	Number of population	Livebirths	Deaths	Natural increase	Infants deaths	per 1000 population			Infant deaths per 1000 livebirths
						Livebirths	Deaths	Natural increase	
2006	47227	511	741	-230	3	10.8	15.7	-4.9	5.9
2007	46729	463	718	-255	6	9.9	15.4	-5.5	13.0
2008	46201	447	691	-244	2	9.7	15.0	-5.3	4.5
2009	45725	462	754	-292	6	10.1	16.5	-6.4	13.0
2010	45261	409	686	-277	1	9.0	15.2	-6.1	2.4
2011	44479	410	764	-354	2	9.2	17.2	-8.0	4.9
2012	43986	416	756	-340	4	9.5	17.2	-7.7	9.6
2013	43511	406	681	-275	0	9.3	15.7	-6.3	0.0
2014	43021	388	697	-309	4	9.0	16.2	-7.2	10.3
2015	42515	407	745	-338	1	9.6	17.5	-7.9	2.5
2016	42068	392	672	-280	3	9.3	16.0	-6.7	7.7
2017	41652	402	652	-250	3	9.7	15.7	-6.0	7.5
2018	41218	415	677	-262	1	10.1	16.4	-6.4	2.4
2019	40748	400	698	-298	1	9.8	17.1	-7.3	2.5
2020	40229	387	833	-446	3	9.6	20.7	-11.1	7.8
2021	39643	427	889	-462	0	10.8	22.4	-11.7	0.0
2022	38224	427	722	-295	3	11.2	18.9	-7.7	7.0

Source: Vital Statistics, SORS

Definitions

Population size

Number of population in the respective year. The data on the number of population in 1961, 1971, 1981 and 1991 are census data, while for the inter-census years the number of population was calculated as an average inter-census difference. From 2002 are given the population estimates that were calculated according to the census of population results and the annual statistics of natural mechanical population movements.

Livebirths

Absolute number of live births in the course of a year. Live born child means a child giving vital signs after birth (breathing, i.e. heartbeat), even for the shortest time, regardless the mother's pregnancy duration.

Deaths

Absolute number of deaths in the course of a year. Deceased is a person that whenever after having been born live, shows permanently stopped vital signs.

Natural increase

Natural population increase is the number of live births minus the number of deaths.

Infants deaths

Absolute number of infants deaths in the course of a year. Deceased infant is a child that after having been born live and before aged one year, shows permanently stopped vital signs.

Livebirths, per 1 000 population

Livebirths rate is the ratio of the number of live births and the population size in the respective year. The number of live births is divided by the population size and then multiplied by 1000.

Deaths, per 1 000 population

General mortality rate represents the ratio between the number of deaths and the population size in the respective year. The number of deaths is divided by population size and then multiplied by 1000.

Natural increase, per 1 000 population

Natural population increase rate is the difference between the number of live births and the number of deaths, in relation to the population size in the respective year.

Natural population increase rate = (number of live births - number of deaths) / population size * 1000

Infants deaths, per 1 000 livebirths

Infant mortality rate is the ratio of deceased children under 1 year of age and live births in the respective year. The mortality rate is expressed per 1000 live births.

Infant mortality rate = (number of deceased children under 1 year of age / number of live births) * 1000

Additional info:



Download all database data in Excel format:

[Data](#)



DevInfo profiles:

devinfo.stat.gov.rs/SerbiaProfileLauncher/?lang=en



DevInfo online database:

devinfo.stat.gov.rs/vitalna



For additional information or questions please contact:

devinfo@stat.gov.rs