

Natural changes of population 1961 – 2022

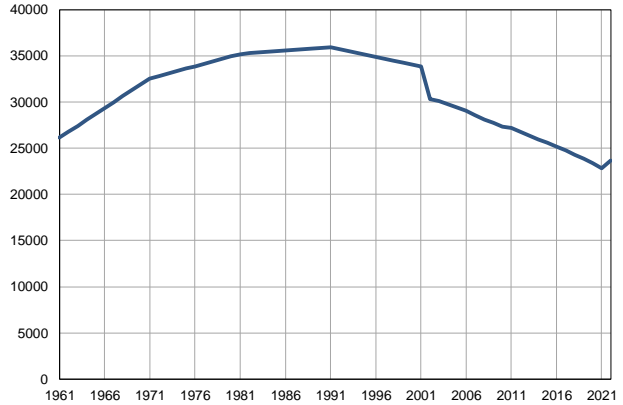
Profile
July 2023

Priboj

	1961	2022
Population size	26147	23647
Livebirths, Number	854	139
Deaths, Number	190	372
Natural increase, Number	664	-233
Infants deaths, Number	45	1
Livebirths, per 1,000 population	33	6
Deaths, per 1,000 population	7	16
Natural increase, per 1,000 population	25	-10
Infants deaths, per 1,000 livebirths	53	7

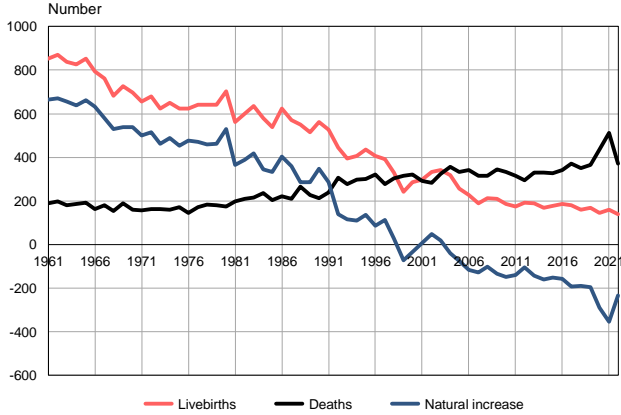
Source: Vital Statistics, SORS

Population size, 1961–2022



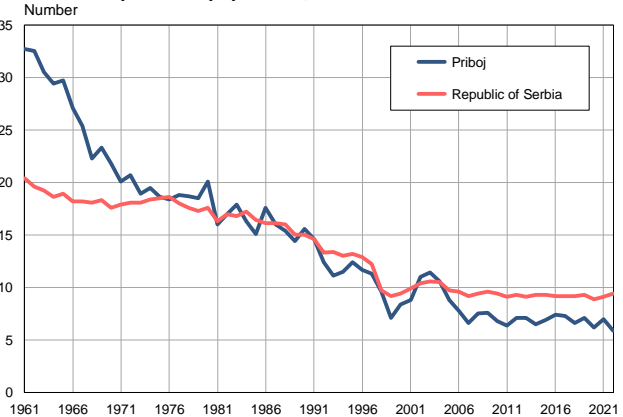
Source: Vital Statistics, SORS

Livebirths, deaths and natural increase, 1961–2022



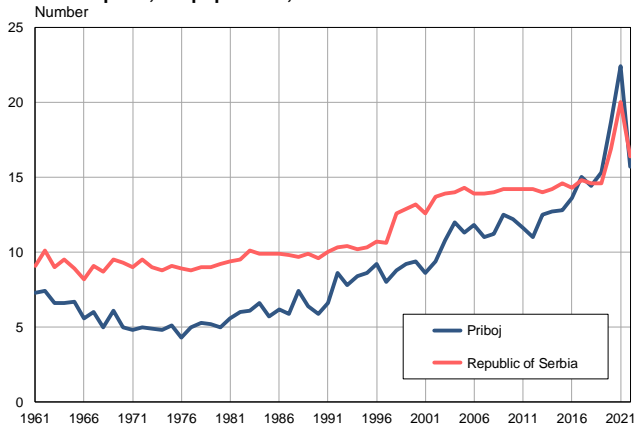
Source: Vital Statistics, SORS

Livebirths per 1,000 population, 1961–2022



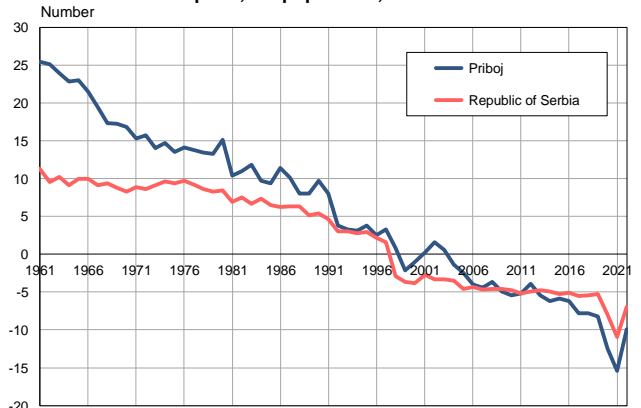
Source: Vital Statistics, SORS

Deaths per 1,000 population, 1961–2022



Source: Vital Statistics, SORS

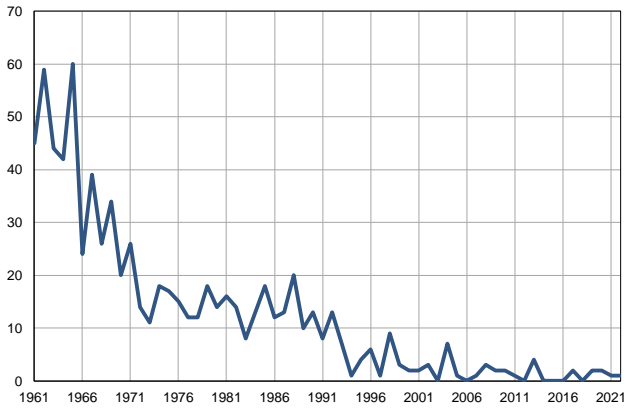
Natural increase per 1,000 population, 1961–2022



Source: Vital Statistics, SORS

Infants deaths, 1961–2022

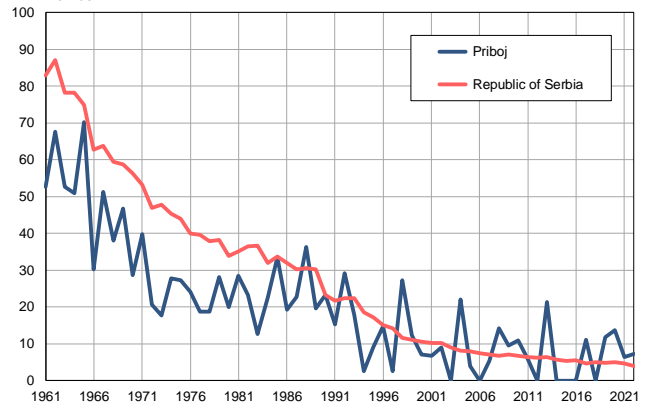
Number



Source: Vital Statistics, SORS

Infants deaths per 1,000 livebirths, 1961–2022

Number



Source: Vital Statistics, SORS

Table. Natural changes of population, Priboj

Year	Number of population	Livebirths	Deaths	Natural increase	Infants deaths	per 1000 population			Infant deaths per 1000 livebirths
						Livebirths	Deaths	Natural increase	
1961	26147	854	190	664	45	32.7	7.3	25.4	52.7
1962	26788	871	199	672	59	32.5	7.4	25.1	67.7
1963	27427	837	181	656	44	30.5	6.6	23.9	52.6
1964	28067	825	186	639	42	29.4	6.6	22.8	50.9
1965	28707	853	191	662	60	29.7	6.7	23.0	70.3
1966	29348	795	163	632	24	27.1	5.6	21.5	30.2
1967	29988	761	180	581	39	25.4	6.0	19.4	51.2
1968	30628	682	153	529	26	22.3	5.0	17.3	38.1
1969	31268	727	190	537	34	23.3	6.1	17.2	46.8
1970	31908	696	159	537	20	21.8	5.0	16.8	28.7
1971	32548	655	156	499	26	20.1	4.8	15.3	39.7
1972	32813	680	164	516	14	20.7	5.0	15.7	20.6
1973	33078	625	163	462	11	18.9	4.9	14.0	17.6
1974	33344	649	159	490	18	19.5	4.8	14.7	27.7
1975	33609	624	172	452	17	18.6	5.1	13.5	27.2
1976	33874	623	145	478	15	18.4	4.3	14.1	24.1
1977	34139	642	171	471	12	18.8	5.0	13.8	18.7
1978	34404	642	184	458	12	18.7	5.3	13.4	18.7
1979	34670	641	180	461	18	18.5	5.2	13.3	28.1
1980	34935	702	173	529	14	20.1	5.0	15.1	19.9
1981	35200	563	197	366	16	16.0	5.6	10.4	28.4
1982	35275	601	211	390	14	17.0	6.0	11.0	23.3
1983	35350	634	216	418	8	17.9	6.1	11.8	12.6
1984	35425	579	235	344	13	16.3	6.6	9.7	22.5
1985	35500	537	204	333	18	15.1	5.7	9.4	33.5
1986	35575	625	222	403	12	17.6	6.2	11.4	19.2
1987	35651	570	210	360	13	16.0	5.9	10.1	22.8
1988	35725	551	264	287	20	15.4	7.4	8.0	36.3
1989	35801	514	228	286	10	14.4	6.4	8.0	19.5
1990	35876	561	213	348	13	15.6	5.9	9.7	23.2
1991	35951	526	239	287	8	14.6	6.6	8.0	15.2
1992	35743	445	306	139	13	12.4	8.6	3.8	29.2
1993	35534	394	278	116	7	11.1	7.8	3.3	17.8
1994	35326	407	298	109	1	11.5	8.4	3.1	2.5
1995	35117	437	301	136	4	12.4	8.6	3.8	9.2
1996	34908	407	321	86	6	11.7	9.2	2.5	14.7
1997	34701	391	277	114	1	11.3	8.0	3.3	2.6
1998	34492	330	303	27	9	9.6	8.8	0.8	27.3
1999	34283	243	316	-73	3	7.1	9.2	-2.1	12.3
2000	34075	286	321	-35	2	8.4	9.4	-1.0	7.0
2001	33866	297	291	6	2	8.8	8.6	0.2	6.7
2002	30313	332	284	48	3	11.0	9.4	1.6	9.0
2003	30104	343	325	18	0	11.4	10.8	0.6	0.0
2004	29793	317	357	-40	7	10.6	12.0	-1.4	22.1
2005	29447	258	333	-75	1	8.8	11.3	-2.5	3.9

Table. Natural changes of population, Priboj

Year	Number of population	Livebirths	Deaths	Natural increase	Infants deaths	per 1000 population			Infant deaths per 1000 livebirths
						Livebirths	Deaths	Natural increase	
2006	29070	226	343	-117	0	7.8	11.8	-4.0	0.0
2007	28603	188	315	-127	1	6.6	11.0	-4.4	5.3
2008	28122	212	314	-102	3	7.5	11.2	-3.7	14.2
2009	27730	211	346	-135	2	7.6	12.5	-4.9	9.5
2010	27349	185	334	-149	2	6.8	12.2	-5.4	10.8
2011	27166	173	314	-141	1	6.4	11.6	-5.2	5.8
2012	26770	191	295	-104	0	7.1	11.0	-3.9	0.0
2013	26386	188	331	-143	4	7.1	12.5	-5.4	21.3
2014	25979	170	330	-160	0	6.5	12.7	-6.2	0.0
2015	25583	177	328	-151	0	6.9	12.8	-5.9	0.0
2016	25171	186	342	-156	0	7.4	13.6	-6.2	0.0
2017	24745	180	372	-192	2	7.3	15.0	-7.8	11.1
2018	24299	161	350	-189	0	6.6	14.4	-7.8	0.0
2019	23847	170	364	-194	2	7.1	15.3	-8.2	11.8
2020	23373	146	436	-290	2	6.2	18.7	-12.5	13.7
2021	22857	160	513	-353	1	7.0	22.4	-15.4	6.3
2022	23647	139	372	-233	1	5.9	15.7	-9.9	7.2

Source: Vital Statistics, SORS

Definitions

Population size

Number of population in the respective year. The data on the number of population in 1961, 1971, 1981 and 1991 are census data, while for the inter-census years the number of population was calculated as an average inter-census difference. From 2002 are given the population estimates that were calculated according to the census of population results and the annual statistics of natural mechanical population movements.

Livebirths

Absolute number of live births in the course of a year. Live born child means a child giving vital signs after birth (breathing, i.e. heartbeat), even for the shortest time, regardless the mother's pregnancy duration.

Deaths

Absolute number of deaths in the course of a year. Deceased is a person that whenever after having been born live, shows permanently stopped vital signs.

Natural increase

Natural population increase is the number of live births minus the number of deaths.

Infants deaths

Absolute number of infants deaths in the course of a year. Deceased infant is a child that after having been born live and before aged one year, shows permanently stopped vital signs.

Livebirths, per 1 000 population

Livebirths rate is the ratio of the number of live births and the population size in the respective year. The number of live births is divided by the population size and then multiplied by 1000.

Deaths, per 1 000 population

General mortality rate represents the ratio between the number of deaths and the population size in the respective year. The number of deaths is divided by population size and then multiplied by 1000.

Natural increase, per 1 000 population

Natural population increase rate is the difference between the number of live births and the number of deaths, in relation to the population size in the respective year.

Natural population increase rate = (number of live births - number of deaths) / population size * 1000

Infants deaths, per 1 000 livebirths

Infant mortality rate is the ratio of deceased children under 1 year of age and live births in the respective year. The mortality rate is expressed per 1000 live births.

Infant mortality rate = (number of deceased children under 1 year of age / number of live births) * 1000

Additional info:



Download all database data in Excel format:

[Data](#)



DevInfo profiles:

devinfo.stat.gov.rs/SerbiaProfileLauncher/?lang=en



DevInfo online database:

devinfo.stat.gov.rs/vitalna



For additional information or questions please contact:

devinfo@stat.gov.rs