

Natural changes of population 1961 – 2022

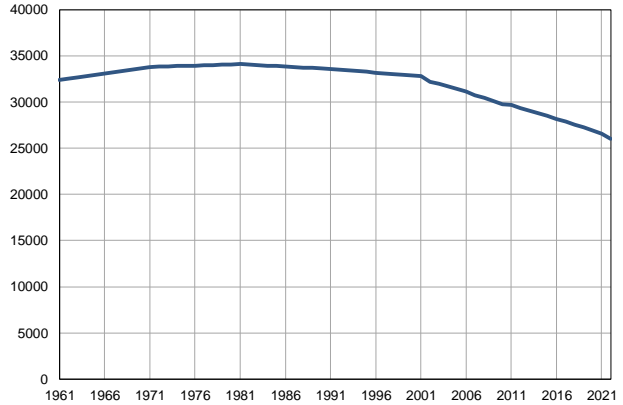
Profile
July 2023

Požega

	1961	2022
Population size	32382	26050
Livebirths, Number	499	195
Deaths, Number	271	460
Natural increase, Number	228	-265
Infants deaths, Number	20	0
Livebirths, per 1,000 population	15	8
Deaths, per 1,000 population	8	18
Natural increase, per 1,000 population	7	-10
Infants deaths, per 1,000 livebirths	40	0

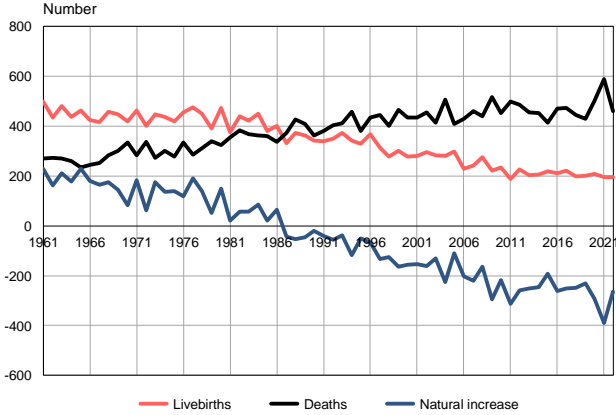
Source: Vital Statistics, SORS

Population size, 1961–2022



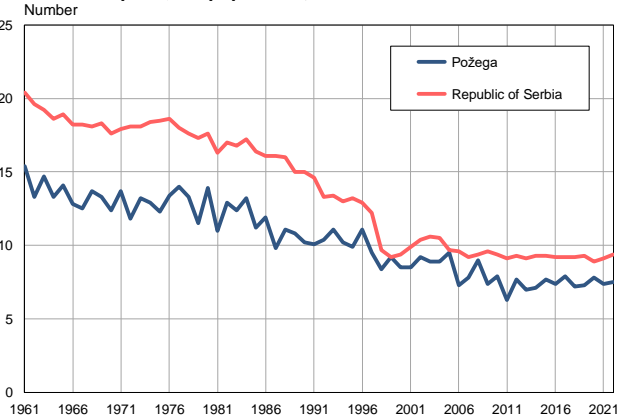
Source: Vital Statistics, SORS

Livebirths, deaths and natural increase, 1961–2022



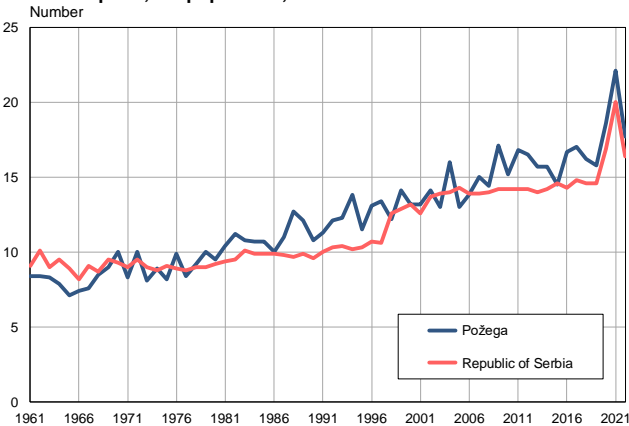
Source: Vital Statistics, SORS

Livebirths per 1,000 population, 1961–2022



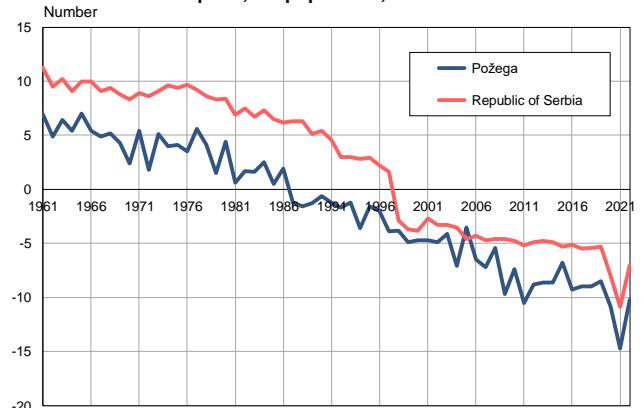
Source: Vital Statistics, SORS

Deaths per 1,000 population, 1961–2022



Source: Vital Statistics, SORS

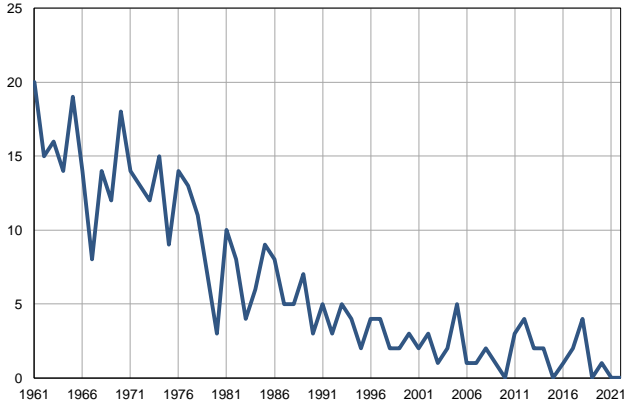
Natural increase per 1,000 population, 1961–2022



Source: Vital Statistics, SORS

Infants deaths, 1961–2022

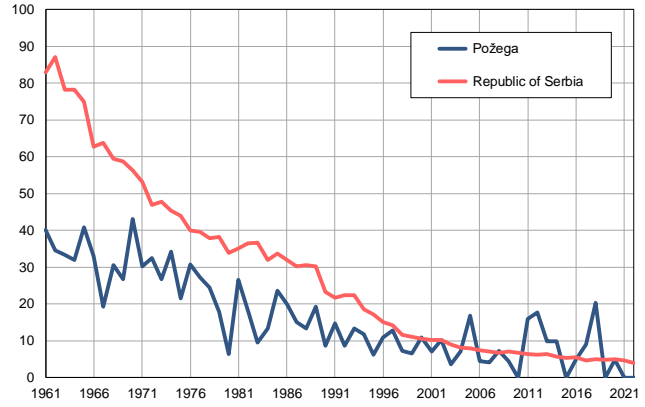
Number



Source: Vital Statistics, SORS

Infants deaths per 1,000 livebirths, 1961–2022

Number



Source: Vital Statistics, SORS

Table. Natural changes of population, Požega

Year	Number of population	Livebirths	Deaths	Natural increase	Infants deaths	per 1000 population			Infant deaths per 1000 livebirths
						Livebirths	Deaths	Natural increase	
1961	32382	499	271	228	20	15.4	8.4	7.0	40.1
1962	32524	434	272	162	15	13.3	8.4	4.9	34.6
1963	32666	480	270	210	16	14.7	8.3	6.4	33.3
1964	32809	437	260	177	14	13.3	7.9	5.4	32.0
1965	32951	464	235	229	19	14.1	7.1	7.0	40.9
1966	33093	425	245	180	14	12.8	7.4	5.4	32.9
1967	33235	416	252	164	8	12.5	7.6	4.9	19.2
1968	33377	458	284	174	14	13.7	8.5	5.2	30.6
1969	33520	447	302	145	12	13.3	9.0	4.3	26.8
1970	33662	419	335	84	18	12.4	10.0	2.4	43.0
1971	33804	464	282	182	14	13.7	8.3	5.4	30.2
1972	33834	400	337	63	13	11.8	10.0	1.8	32.5
1973	33863	448	273	175	12	13.2	8.1	5.1	26.8
1974	33893	438	301	137	15	12.9	8.9	4.0	34.2
1975	33922	418	278	140	9	12.3	8.2	4.1	21.5
1976	33952	454	335	119	14	13.4	9.9	3.5	30.8
1977	33982	477	286	191	13	14.0	8.4	5.6	27.3
1978	34011	451	312	139	11	13.3	9.2	4.1	24.4
1979	34041	391	339	52	7	11.5	10.0	1.5	17.9
1980	34070	472	323	149	3	13.9	9.5	4.4	6.4
1981	34100	376	355	21	10	11.0	10.4	0.6	26.6
1982	34048	440	383	57	8	12.9	11.2	1.7	18.2
1983	33995	423	367	56	4	12.4	10.8	1.6	9.5
1984	33944	449	363	86	6	13.2	10.7	2.5	13.4
1985	33891	381	361	20	9	11.2	10.7	0.5	23.6
1986	33838	401	337	64	8	11.9	10.0	1.9	20.0
1987	33787	331	373	-42	5	9.8	11.0	-1.2	15.1
1988	33735	374	427	-53	5	11.1	12.7	-1.6	13.4
1989	33682	363	409	-46	7	10.8	12.1	-1.3	19.3
1990	33630	343	362	-19	3	10.2	10.8	-0.6	8.7
1991	33578	339	380	-41	5	10.1	11.3	-1.2	14.7
1992	33499	349	404	-55	3	10.4	12.1	-1.7	8.6
1993	33420	372	411	-39	5	11.1	12.3	-1.2	13.4
1994	33341	341	459	-118	4	10.2	13.8	-3.6	11.7
1995	33262	330	381	-51	2	9.9	11.5	-1.6	6.1
1996	33183	368	434	-66	4	11.1	13.1	-2.0	10.9
1997	33105	313	445	-132	4	9.5	13.4	-3.9	12.8
1998	33026	277	402	-125	2	8.4	12.2	-3.8	7.2
1999	32947	302	465	-163	2	9.2	14.1	-4.9	6.6
2000	32868	279	435	-156	3	8.5	13.2	-4.7	10.8
2001	32789	280	434	-154	2	8.5	13.2	-4.7	7.1
2002	32205	295	455	-160	3	9.2	14.1	-4.9	10.2
2003	31962	284	414	-130	1	8.9	13.0	-4.1	3.5
2004	31716	281	506	-225	2	8.9	16.0	-7.1	7.1
2005	31432	298	409	-111	5	9.5	13.0	-3.5	16.8

Table. Natural changes of population, Požega

Year	Number of population	Livebirths	Deaths	Natural increase	Infants deaths	per 1000 population			Infant deaths per 1000 livebirths
						Livebirths	Deaths	Natural increase	
2006	31117	228	430	-202	1	7.3	13.8	-6.5	4.4
2007	30762	241	461	-220	1	7.8	15.0	-7.2	4.1
2008	30455	275	440	-165	2	9.0	14.4	-5.4	7.3
2009	30128	222	516	-294	1	7.4	17.1	-9.7	4.5
2010	29777	234	453	-219	0	7.9	15.2	-7.4	0.0
2011	29718	187	499	-312	3	6.3	16.8	-10.5	16.0
2012	29361	226	485	-259	4	7.7	16.5	-8.8	17.7
2013	29050	204	455	-251	2	7.0	15.7	-8.6	9.8
2014	28757	205	452	-247	2	7.1	15.7	-8.6	9.8
2015	28493	220	413	-193	0	7.7	14.5	-6.8	0.0
2016	28198	210	471	-261	1	7.4	16.7	-9.3	4.8
2017	27872	221	473	-252	2	7.9	17.0	-9.0	9.0
2018	27554	198	446	-248	4	7.2	16.2	-9.0	20.2
2019	27258	200	430	-230	0	7.3	15.8	-8.5	0.0
2020	26954	209	501	-292	1	7.8	18.6	-10.8	4.8
2021	26602	197	588	-391	0	7.4	22.1	-14.7	0.0
2022	26050	195	460	-265	0	7.5	17.7	-10.2	0.0

Source: Vital Statistics, SORS

Definitions

Population size

Number of population in the respective year. The data on the number of population in 1961, 1971, 1981 and 1991 are census data, while for the inter-census years the number of population was calculated as an average inter-census difference. From 2002 are given the population estimates that were calculated according to the census of population results and the annual statistics of natural mechanical population movements.

Livebirths

Absolute number of live births in the course of a year. Live born child means a child giving vital signs after birth (breathing, i.e. heartbeat), even for the shortest time, regardless the mother's pregnancy duration.

Deaths

Absolute number of deaths in the course of a year. Deceased is a person that whenever after having been born live, shows permanently stopped vital signs.

Natural increase

Natural population increase is the number of live births minus the number of deaths.

Infants deaths

Absolute number of infants deaths in the course of a year. Deceased infant is a child that after having been born live and before aged one year, shows permanently stopped vital signs.

Livebirths, per 1 000 population

Livebirths rate is the ratio of the number of live births and the population size in the respective year. The number of live births is divided by the population size and then multiplied by 1000.

Deaths, per 1 000 population

General mortality rate represents the ratio between the number of deaths and the population size in the respective year. The number of deaths is divided by population size and then multiplied by 1000.

Natural increase, per 1 000 population

Natural population increase rate is the difference between the number of live births and the number of deaths, in relation to the population size in the respective year.

Natural population increase rate = (number of live births - number of deaths) / population size * 1000

Infants deaths, per 1 000 livebirths

Infant mortality rate is the ratio of deceased children under 1 year of age and live births in the respective year. The mortality rate is expressed per 1000 live births.

Infant mortality rate = (number of deceased children under 1 year of age / number of live births) * 1000

Additional info:



Download all database data in Excel format:

[Data](#)



DevInfo profiles:

devinfo.stat.gov.rs/SerbiaProfileLauncher/?lang=en



DevInfo online database:

devinfo.stat.gov.rs/vitalna



For additional information or questions please contact:

devinfo@stat.gov.rs