

Natural changes of population 1961 – 2022

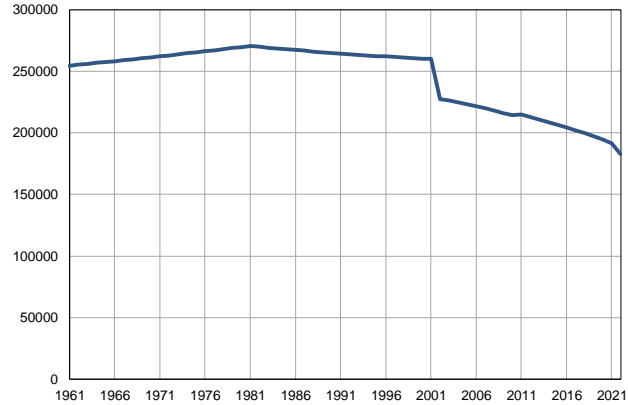
Profile
July 2023

Pomoravlje

	1961	2022
Population size	254521	182913
Livebirths, Number	3813	1398
Deaths, Number	2172	3597
Natural increase, Number	1641	-2199
Infants deaths, Number	269	6
Livebirths, per 1,000 population	15	8
Deaths, per 1,000 population	9	20
Natural increase, per 1,000 population	7	-12
Infants deaths, per 1,000 livebirths	71	4

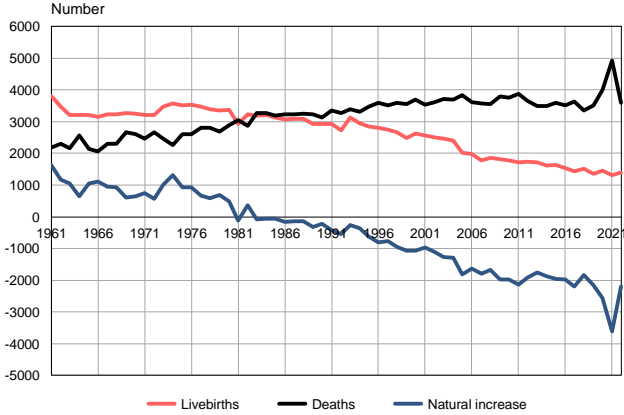
Source: Vital Statistics, SORS

Population size, 1961–2022



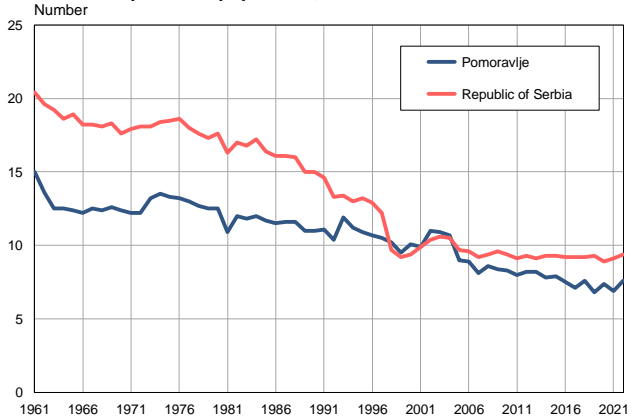
Source: Vital Statistics, SORS

Livebirths, deaths and natural increase, 1961–2022



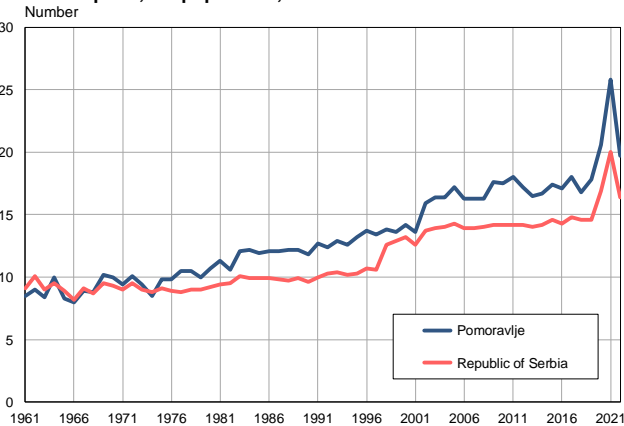
Source: Vital Statistics, SORS

Livebirths per 1,000 population, 1961–2022



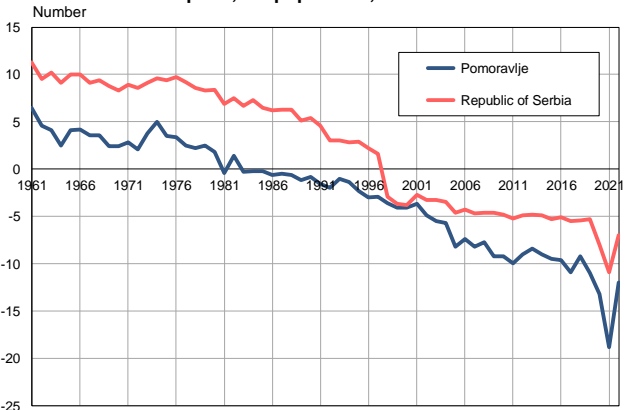
Source: Vital Statistics, SORS

Deaths per 1,000 population, 1961–2022



Source: Vital Statistics, SORS

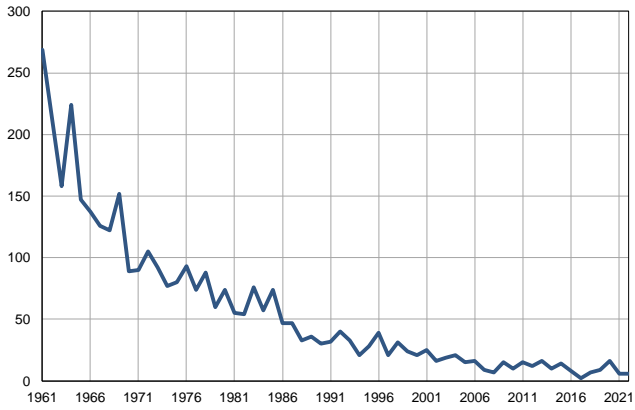
Natural increase per 1,000 population, 1961–2022



Source: Vital Statistics, SORS

Infants deaths, 1961–2022

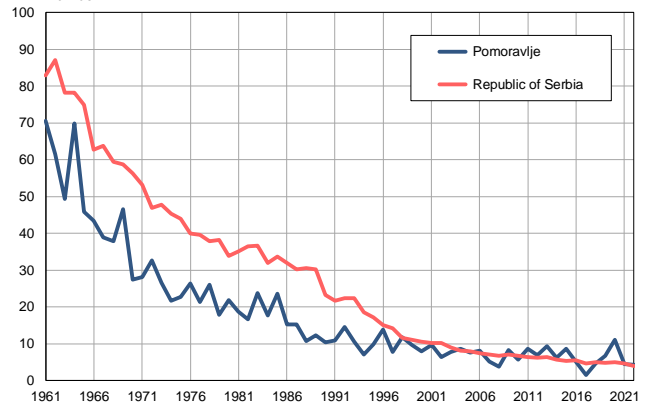
Number



Source: Vital Statistics, SORS

Infants deaths per 1,000 livebirths, 1961–2022

Number



Source: Vital Statistics, SORS

Table. Natural changes of population, Pomoravlje

Year	Number of population	Livebirths	Deaths	Natural increase	Infants deaths	per 1000 population			Infant deaths per 1000 livebirths
						Livebirths	Deaths	Natural increase	
1961	254521	3813	2172	1641	269	15.0	8.5	6.5	70.5
1962	255274	3465	2294	1171	213	13.6	9.0	4.6	61.5
1963	256028	3205	2162	1043	158	12.5	8.4	4.1	49.3
1964	256781	3207	2568	639	224	12.5	10.0	2.5	69.8
1965	257535	3202	2142	1060	147	12.4	8.3	4.1	45.9
1966	258288	3157	2054	1103	137	12.2	8.0	4.2	43.4
1967	259041	3238	2297	941	126	12.5	8.9	3.6	38.9
1968	259795	3225	2297	928	122	12.4	8.8	3.6	37.8
1969	260548	3270	2658	612	152	12.6	10.2	2.4	46.5
1970	261302	3245	2603	642	89	12.4	10.0	2.4	27.4
1971	262055	3208	2469	739	90	12.2	9.4	2.8	28.1
1972	262897	3218	2657	561	105	12.2	10.1	2.1	32.6
1973	263737	3473	2471	1002	92	13.2	9.4	3.8	26.5
1974	264581	3564	2252	1312	77	13.5	8.5	5.0	21.6
1975	265423	3523	2599	924	80	13.3	9.8	3.5	22.7
1976	266265	3528	2606	922	93	13.2	9.8	3.4	26.4
1977	267106	3471	2797	674	74	13.0	10.5	2.5	21.3
1978	267948	3391	2801	590	88	12.7	10.5	2.2	26.0
1979	268790	3360	2682	678	60	12.5	10.0	2.5	17.9
1980	269632	3378	2891	487	74	12.5	10.7	1.8	21.9
1981	270474	2937	3053	-116	55	10.9	11.3	-0.4	18.7
1982	269837	3229	2870	359	54	12.0	10.6	1.4	16.7
1983	269201	3187	3261	-74	76	11.8	12.1	-0.3	23.8
1984	268564	3213	3274	-61	57	12.0	12.2	-0.2	17.7
1985	267928	3135	3193	-58	74	11.7	11.9	-0.2	23.6
1986	267291	3073	3240	-167	47	11.5	12.1	-0.6	15.3
1987	266654	3093	3227	-134	47	11.6	12.1	-0.5	15.2
1988	266018	3098	3244	-146	33	11.6	12.2	-0.6	10.7
1989	265381	2924	3237	-313	36	11.0	12.2	-1.2	12.3
1990	264745	2921	3136	-215	30	11.0	11.8	-0.8	10.3
1991	264108	2928	3344	-416	32	11.1	12.7	-1.6	10.9
1992	263684	2733	3270	-537	40	10.4	12.4	-2.0	14.6
1993	263259	3124	3383	-259	33	11.9	12.9	-1.0	10.6
1994	262835	2950	3314	-364	21	11.2	12.6	-1.4	7.1
1995	262410	2857	3472	-615	28	10.9	13.2	-2.3	9.8
1996	261986	2804	3602	-798	39	10.7	13.7	-3.0	13.9
1997	261561	2739	3512	-773	21	10.5	13.4	-2.9	7.7
1998	261137	2656	3598	-942	31	10.2	13.8	-3.6	11.7
1999	260712	2482	3552	-1070	24	9.5	13.6	-4.1	9.7
2000	260288	2625	3700	-1075	21	10.1	14.2	-4.1	8.0
2001	259863	2571	3536	-965	25	9.9	13.6	-3.7	9.7
2002	227335	2506	3620	-1114	16	11.0	15.9	-4.9	6.4
2003	226086	2457	3717	-1260	19	10.9	16.4	-5.5	7.7
2004	224874	2405	3693	-1288	21	10.7	16.4	-5.7	8.7
2005	223391	2013	3834	-1821	15	9.0	17.2	-8.2	7.5

Table. Natural changes of population, Pomoravlje

Year	Number of population	Livebirths	Deaths	Natural increase	Infants deaths	per 1000 population			Infant deaths per 1000 livebirths
						Livebirths	Deaths	Natural increase	
2006	221704	1982	3608	-1626	16	8.9	16.3	-7.4	8.1
2007	219934	1776	3574	-1798	9	8.1	16.3	-8.2	5.1
2008	218062	1865	3548	-1683	7	8.6	16.3	-7.7	3.8
2009	216186	1818	3799	-1981	15	8.4	17.6	-9.2	8.3
2010	214260	1779	3753	-1974	10	8.3	17.5	-9.2	5.6
2011	214872	1726	3870	-2144	15	8.0	18.0	-10.0	8.7
2012	212808	1746	3662	-1916	12	8.2	17.2	-9.0	6.9
2013	210795	1724	3486	-1762	16	8.2	16.5	-8.4	9.3
2014	208683	1621	3495	-1874	10	7.8	16.7	-9.0	6.2
2015	206491	1635	3585	-1950	14	7.9	17.4	-9.5	8.6
2016	204369	1536	3503	-1967	8	7.5	17.1	-9.6	5.2
2017	202025	1435	3634	-2199	2	7.1	18.0	-10.9	1.4
2018	199698	1524	3352	-1828	7	7.6	16.8	-9.2	4.6
2019	197361	1350	3511	-2161	9	6.8	17.8	-11.0	6.7
2020	194676	1445	4004	-2559	16	7.4	20.6	-13.2	11.1
2021	191260	1322	4925	-3603	6	6.9	25.8	-18.8	4.5
2022	182913	1398	3597	-2199	6	7.6	19.7	-12.0	4.3

Source: Vital Statistics, SORS

Definitions

Population size

Number of population in the respective year. The data on the number of population in 1961, 1971, 1981 and 1991 are census data, while for the inter-census years the number of population was calculated as an average inter-census difference. From 2002 are given the population estimates that were calculated according to the census of population results and the annual statistics of natural mechanical population movements.

Livebirths

Absolute number of live births in the course of a year. Live born child means a child giving vital signs after birth (breathing, i.e. heartbeat), even for the shortest time, regardless the mother's pregnancy duration.

Deaths

Absolute number of deaths in the course of a year. Deceased is a person that whenever after having been born live, shows permanently stopped vital signs.

Natural increase

Natural population increase is the number of live births minus the number of deaths.

Infants deaths

Absolute number of infants deaths in the course of a year. Deceased infant is a child that after having been born live and before aged one year, shows permanently stopped vital signs.

Livebirths, per 1 000 population

Livebirths rate is the ratio of the number of live births and the population size in the respective year. The number of live births is divided by the population size and then multiplied by 1000.

Deaths, per 1 000 population

General mortality rate represents the ratio between the number of deaths and the population size in the respective year. The number of deaths is divided by population size and then multiplied by 1000.

Natural increase, per 1 000 population

Natural population increase rate is the difference between the number of live births and the number of deaths, in relation to the population size in the respective year.

Natural population increase rate = (number of live births - number of deaths) / population size * 1000

Infants deaths, per 1 000 livebirths

Infant mortality rate is the ratio of deceased children under 1 year of age and live births in the respective year. The mortality rate is expressed per 1000 live births.

Infant mortality rate = (number of deceased children under 1 year of age / number of live births) * 1000

Additional info:



Download all database data in Excel format:

[Data](#)



DevInfo profiles:

devinfo.stat.gov.rs/SerbiaProfileLauncher/?lang=en



DevInfo online database:

devinfo.stat.gov.rs/vitalna



For additional information or questions please contact:

devinfo@stat.gov.rs