

Natural changes of population 1961 – 2022

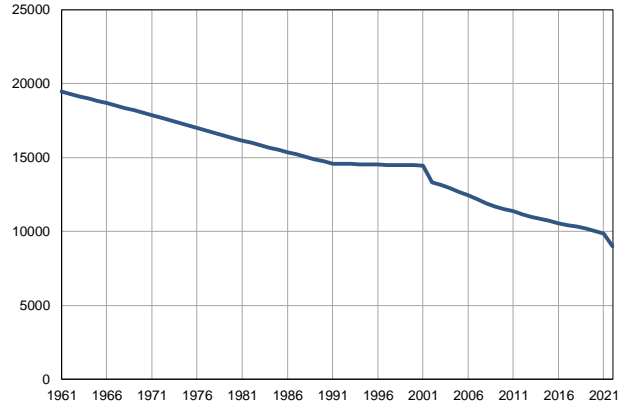
Profile
July 2023

Plandište

	1961	2022
Population size	19455	8997
Livebirths, Number	357	59
Deaths, Number	180	208
Natural increase, Number	177	-149
Infants deaths, Number	30	0
Livebirths, per 1,000 population	18	7
Deaths, per 1,000 population	9	23
Natural increase, per 1,000 population	9	-17
Infants deaths, per 1,000 livebirths	84	0

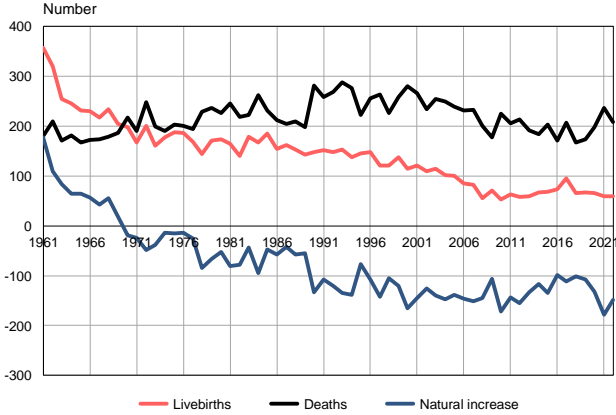
Source: Vital Statistics, SORS

Population size, 1961–2022



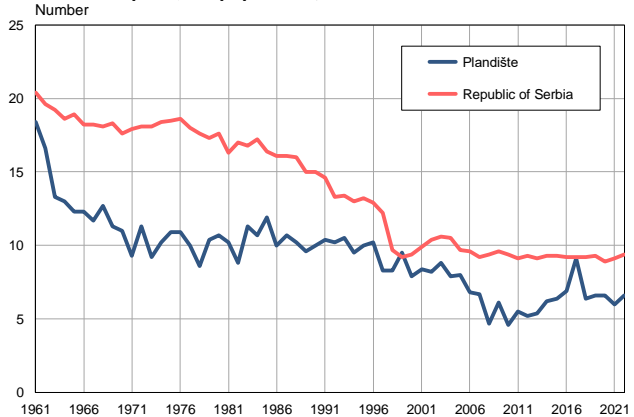
Source: Vital Statistics, SORS

Livebirths, deaths and natural increase, 1961–2022



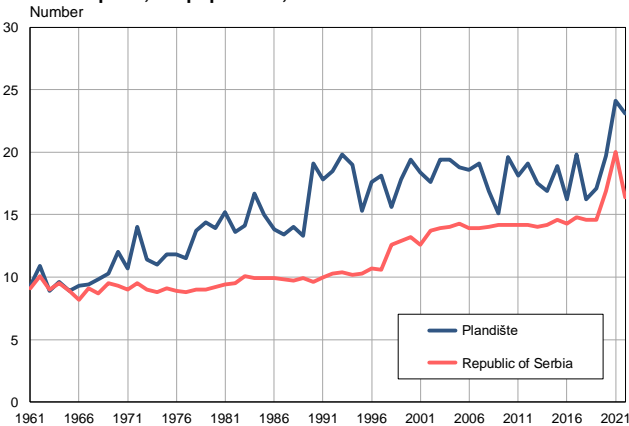
Source: Vital Statistics, SORS

Livebirths per 1,000 population, 1961–2022



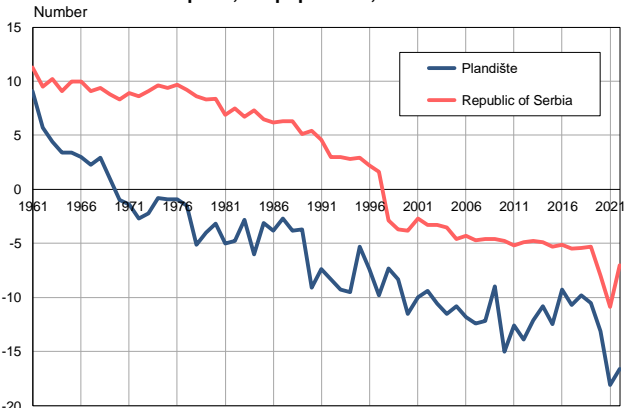
Source: Vital Statistics, SORS

Deaths per 1,000 population, 1961–2022



Source: Vital Statistics, SORS

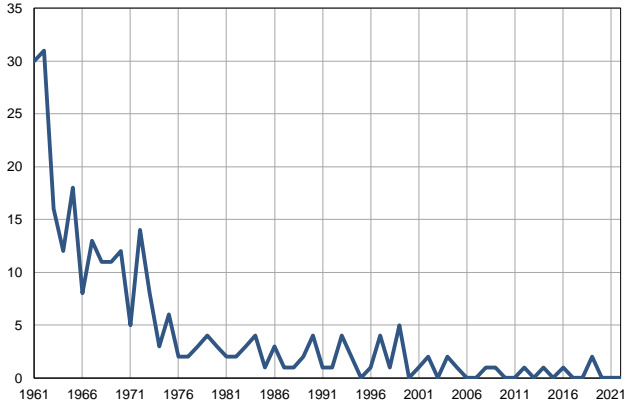
Natural increase per 1,000 population, 1961–2022



Source: Vital Statistics, SORS

Infants deaths, 1961–2022

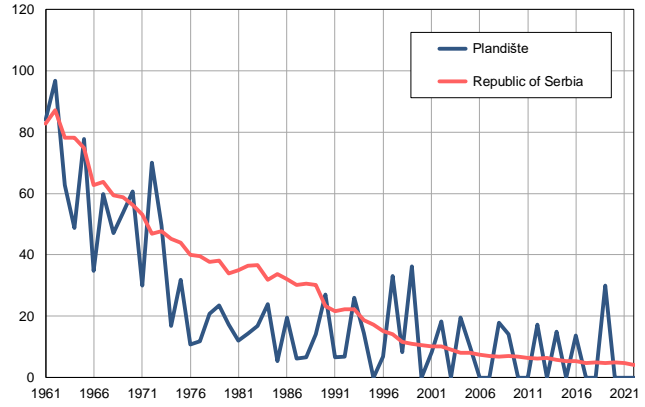
Number



Source: Vital Statistics, SORS

Infants deaths per 1,000 livebirths, 1961–2022

Number



Source: Vital Statistics, SORS

Table. Natural changes of population, Plandište

Year	Number of population	Livebirths	Deaths	Natural increase	Infants deaths	per 1000 population			Infant deaths per 1000 livebirths
						Livebirths	Deaths	Natural increase	
1961	19455	357	180	177	30	18.4	9.3	9.1	84.0
1962	19298	320	210	110	31	16.6	10.9	5.7	96.9
1963	19140	255	171	84	16	13.3	8.9	4.4	62.7
1964	18983	246	182	64	12	13.0	9.6	3.4	48.8
1965	18826	231	167	64	18	12.3	8.9	3.4	77.9
1966	18669	230	173	57	8	12.3	9.3	3.0	34.8
1967	18511	217	174	43	13	11.7	9.4	2.3	59.9
1968	18354	234	179	55	11	12.7	9.8	2.9	47.0
1969	18197	205	187	18	11	11.3	10.3	1.0	53.7
1970	18039	198	217	-19	12	11.0	12.0	-1.0	60.6
1971	17882	167	191	-24	5	9.3	10.7	-1.4	29.9
1972	17708	200	248	-48	14	11.3	14.0	-2.7	70.0
1973	17533	161	199	-38	8	9.2	11.4	-2.2	49.7
1974	17359	177	191	-14	3	10.2	11.0	-0.8	16.9
1975	17184	188	203	-15	6	10.9	11.8	-0.9	31.9
1976	17010	186	200	-14	2	10.9	11.8	-0.9	10.8
1977	16836	168	194	-26	2	10.0	11.5	-1.5	11.9
1978	16661	144	229	-85	3	8.6	13.7	-5.1	20.8
1979	16487	171	237	-66	4	10.4	14.4	-4.0	23.4
1980	16312	174	226	-52	3	10.7	13.9	-3.2	17.2
1981	16138	165	245	-80	2	10.2	15.2	-5.0	12.1
1982	15982	140	218	-78	2	8.8	13.6	-4.8	14.3
1983	15827	179	223	-44	3	11.3	14.1	-2.8	16.8
1984	15671	167	262	-95	4	10.7	16.7	-6.0	24.0
1985	15515	185	232	-47	1	11.9	15.0	-3.1	5.4
1986	15360	154	212	-58	3	10.0	13.8	-3.8	19.5
1987	15204	162	204	-42	1	10.7	13.4	-2.7	6.2
1988	15048	153	210	-57	1	10.2	14.0	-3.8	6.5
1989	14892	143	198	-55	2	9.6	13.3	-3.7	14.0
1990	14737	148	281	-133	4	10.0	19.1	-9.1	27.0
1991	14581	152	259	-107	1	10.4	17.8	-7.4	6.6
1992	14568	148	269	-121	1	10.2	18.5	-8.3	6.8
1993	14556	153	288	-135	4	10.5	19.8	-9.3	26.1
1994	14543	138	276	-138	2	9.5	19.0	-9.5	14.5
1995	14531	145	222	-77	0	10.0	15.3	-5.3	0.0
1996	14518	148	256	-108	1	10.2	17.6	-7.4	6.8
1997	14506	121	263	-142	4	8.3	18.1	-9.8	33.1
1998	14493	121	226	-105	1	8.3	15.6	-7.3	8.3
1999	14480	138	258	-120	5	9.5	17.8	-8.3	36.2
2000	14468	114	280	-166	0	7.9	19.4	-11.5	0.0
2001	14456	121	266	-145	1	8.4	18.4	-10.0	8.3
2002	13317	109	234	-125	2	8.2	17.6	-9.4	18.3
2003	13124	115	255	-140	0	8.8	19.4	-10.6	0.0
2004	12909	102	250	-148	2	7.9	19.4	-11.5	19.6
2005	12682	101	239	-138	1	8.0	18.8	-10.8	9.9

Table. Natural changes of population, Plandište

Year	Number of population	Livebirths	Deaths	Natural increase	Infants deaths	per 1000 population			Infant deaths per 1000 livebirths
						Livebirths	Deaths	Natural increase	
2006	12446	85	231	-146	0	6.8	18.6	-11.8	0.0
2007	12185	82	233	-151	0	6.7	19.1	-12.4	0.0
2008	11907	56	201	-145	1	4.7	16.9	-12.2	17.9
2009	11685	71	177	-106	1	6.1	15.1	-9.0	14.1
2010	11495	53	225	-172	0	4.6	19.6	-15.0	0.0
2011	11365	63	206	-143	0	5.5	18.1	-12.6	0.0
2012	11165	58	213	-155	1	5.2	19.1	-13.9	17.2
2013	10991	59	192	-133	0	5.4	17.5	-12.1	0.0
2014	10867	67	184	-117	1	6.2	16.9	-10.8	14.9
2015	10721	69	203	-134	0	6.4	18.9	-12.5	0.0
2016	10562	73	171	-98	1	6.9	16.2	-9.3	13.7
2017	10429	95	207	-112	0	9.1	19.8	-10.7	0.0
2018	10314	66	167	-101	0	6.4	16.2	-9.8	0.0
2019	10200	67	174	-107	2	6.6	17.1	-10.5	29.9
2020	10044	66	198	-132	0	6.6	19.7	-13.1	0.0
2021	9851	59	237	-178	0	6.0	24.1	-18.1	0.0
2022	8997	59	208	-149	0	6.6	23.1	-16.6	0.0

Source: Vital Statistics, SORS

Definitions

Population size

Number of population in the respective year. The data on the number of population in 1961, 1971, 1981 and 1991 are census data, while for the inter-census years the number of population was calculated as an average inter-census difference. From 2002 are given the population estimates that were calculated according to the census of population results and the annual statistics of natural mechanical population movements.

Livebirths

Absolute number of live births in the course of a year. Live born child means a child giving vital signs after birth (breathing, i.e. heartbeat), even for the shortest time, regardless the mother's pregnancy duration.

Deaths

Absolute number of deaths in the course of a year. Deceased is a person that whenever after having been born live, shows permanently stopped vital signs.

Natural increase

Natural population increase is the number of live births minus the number of deaths.

Infants deaths

Absolute number of infants deaths in the course of a year. Deceased infant is a child that after having been born live and before aged one year, shows permanently stopped vital signs.

Livebirths, per 1 000 population

Livebirths rate is the ratio of the number of live births and the population size in the respective year. The number of live births is divided by the population size and then multiplied by 1000.

Deaths, per 1 000 population

General mortality rate represents the ratio between the number of deaths and the population size in the respective year. The number of deaths is divided by population size and then multiplied by 1000.

Natural increase, per 1 000 population

Natural population increase rate is the difference between the number of live births and the number of deaths, in relation to the population size in the respective year.

Natural population increase rate = (number of live births - number of deaths) / population size * 1000

Infants deaths, per 1 000 livebirths

Infant mortality rate is the ratio of deceased children under 1 year of age and live births in the respective year. The mortality rate is expressed per 1000 live births.

Infant mortality rate = (number of deceased children under 1 year of age / number of live births) * 1000

Additional info:



Download all database data in Excel format:

[Data](#)



DevInfo profiles:

devinfo.stat.gov.rs/SerbiaProfileLauncher/?lang=en



DevInfo online database:

devinfo.stat.gov.rs/vitalna



For additional information or questions please contact:

devinfo@stat.gov.rs