

Natural changes of population 1961 – 2020

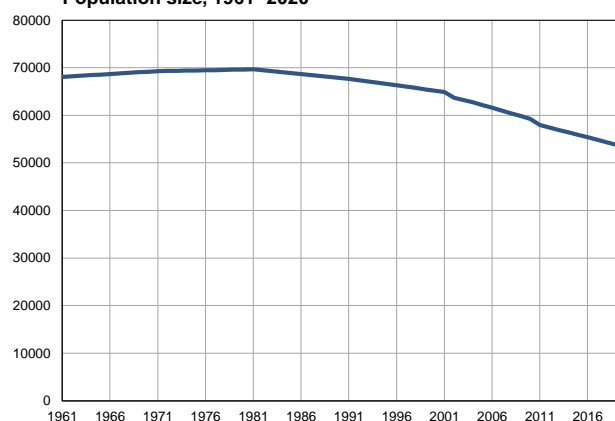
Profile
July 2021

Pirot

	1961	2020
Population size	68073	53281
Livebirths, Number	1192	433
Deaths, Number	553	927
Natural increase, Number	639	-494
Infants deaths, Number	82	3
Livebirths, per 1,000 population	18	8
Deaths, per 1,000 population	8	17
Natural increase, per 1,000 population	9	-9
Infants deaths, per 1,000 livebirths	69	7

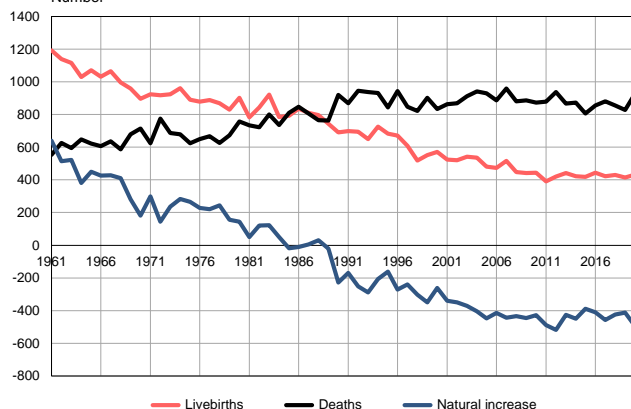
Source: Vital Statistics, SORS

Population size, 1961–2020



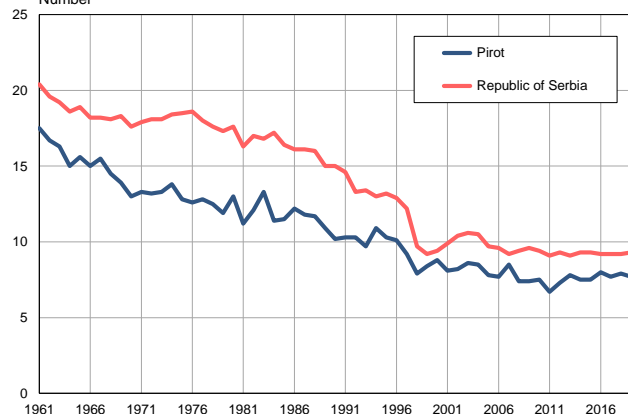
Source: Vital Statistics, SORS

Livebirths, deaths and natural increase, 1961–2020
Number



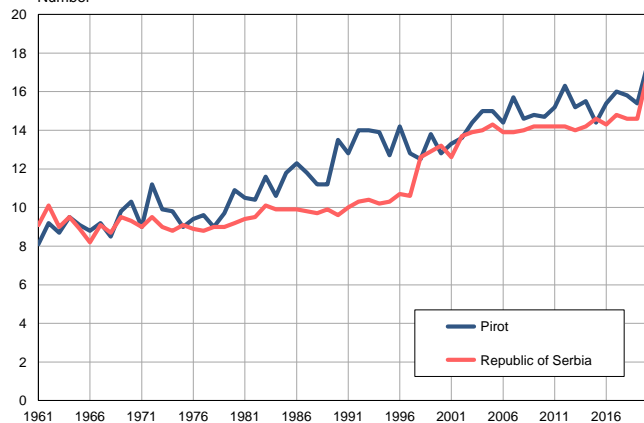
Source: Vital Statistics, SORS

Livebirths per 1,000 population, 1961–2020
Number



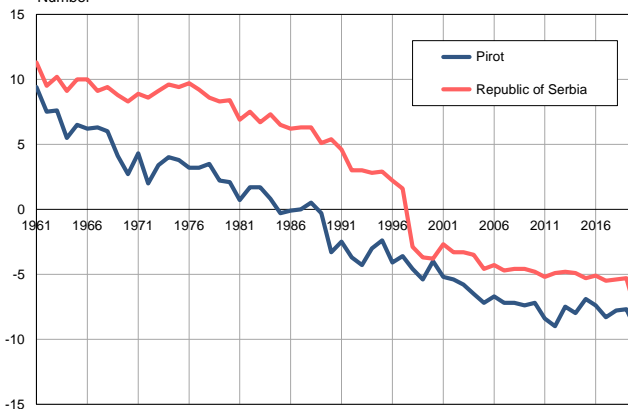
Source: Vital Statistics, SORS

Deaths per 1,000 population, 1961–2020
Number



Source: Vital Statistics, SORS

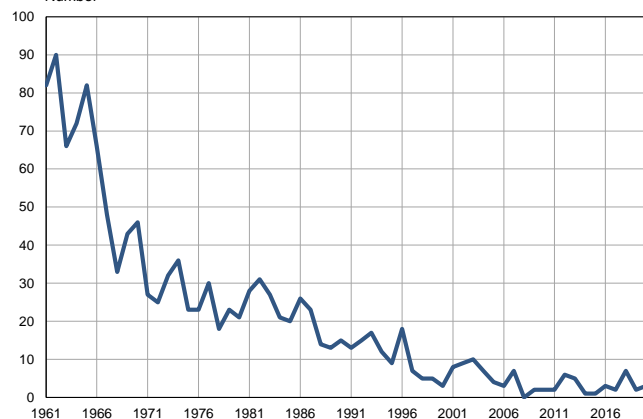
Natural increase per 1,000 population, 1961–2020
Number



Source: Vital Statistics, SORS

Infants deaths, 1961–2020

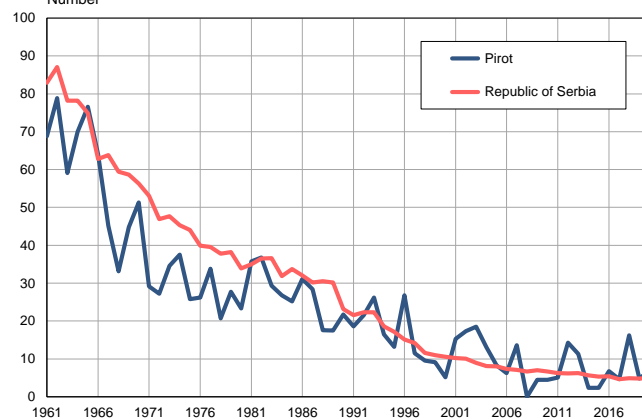
Number



Source: Vital Statistics, SORS

Infants deaths per 1,000 livebirths, 1961–2020

Number



Source: Vital Statistics, SORS

Table. Natural changes of population, Pirot

Year	Number of population	Livebirths	Deaths	Natural increase	Infants deaths	per 1000 population			Infant deaths per 1000 livebirths
						Livebirths	Deaths	Natural increase	
1961	68073	1192	553	639	82	17.5	8.1	9.4	68.8
1962	68194	1140	626	514	90	16.7	9.2	7.5	78.9
1963	68315	1116	594	522	66	16.3	8.7	7.6	59.1
1964	68437	1029	648	381	72	15.0	9.5	5.5	70.0
1965	68558	1071	622	449	82	15.6	9.1	6.5	76.6
1966	68679	1032	606	426	66	15.0	8.8	6.2	64.0
1967	68800	1064	635	429	48	15.5	9.2	6.3	45.1
1968	68921	997	586	411	33	14.5	8.5	6.0	33.1
1969	69043	960	679	281	43	13.9	9.8	4.1	44.8
1970	69164	896	715	181	46	13.0	10.3	2.7	51.3
1971	69285	924	625	299	27	13.3	9.0	4.3	29.2
1972	69322	918	774	144	25	13.2	11.2	2.0	27.2
1973	69358	924	687	237	32	13.3	9.9	3.4	34.6
1974	69395	961	678	283	36	13.8	9.8	4.0	37.5
1975	69432	890	625	265	23	12.8	9.0	3.8	25.8
1976	69468	878	650	228	23	12.6	9.4	3.2	26.2
1977	69506	888	668	220	30	12.8	9.6	3.2	33.8
1978	69543	869	626	243	18	12.5	9.0	3.5	20.7
1979	69579	830	674	156	23	11.9	9.7	2.2	27.7
1980	69616	902	758	144	21	13.0	10.9	2.1	23.3
1981	69653	783	733	50	28	11.2	10.5	0.7	35.8
1982	69454	843	722	121	31	12.1	10.4	1.7	36.8
1983	69254	922	800	122	27	13.3	11.6	1.7	29.3
1984	69055	785	735	50	21	11.4	10.6	0.8	26.8
1985	68855	793	811	-18	20	11.5	11.8	-0.3	25.2
1986	68656	836	847	-11	26	12.2	12.3	-0.1	31.1
1987	68455	810	806	4	23	11.8	11.8	0.0	28.4
1988	68256	797	766	31	14	11.7	11.2	0.5	17.6
1989	68057	743	764	-21	13	10.9	11.2	-0.3	17.5
1990	67857	690	919	-229	15	10.2	13.5	-3.3	21.7
1991	67658	698	868	-170	13	10.3	12.8	-2.5	18.6
1992	67384	694	946	-252	15	10.3	14.0	-3.7	21.6
1993	67111	650	938	-288	17	9.7	14.0	-4.3	26.2
1994	66837	726	932	-206	12	10.9	13.9	-3.0	16.5
1995	66563	683	844	-161	9	10.3	12.7	-2.4	13.2
1996	66290	672	944	-272	18	10.1	14.2	-4.1	26.8
1997	66017	608	848	-240	7	9.2	12.8	-3.6	11.5
1998	65743	519	822	-303	5	7.9	12.5	-4.6	9.6
1999	65469	552	902	-350	5	8.4	13.8	-5.4	9.1
2000	65195	572	834	-262	3	8.8	12.8	-4.0	5.2
2001	64922	524	864	-340	8	8.1	13.3	-5.2	15.3
2002	63679	520	869	-349	9	8.2	13.6	-5.4	17.3
2003	63229	541	912	-371	10	8.6	14.4	-5.8	18.5
2004	62735	536	941	-405	7	8.5	15.0	-6.5	13.1
2005	62174	482	930	-448	4	7.8	15.0	-7.2	8.3

Table. Natural changes of population, Pirot

Year	Number of population	Livebirths	Deaths	Natural increase	Infants deaths	per 1000 population			Infant deaths per 1000 livebirths
						Livebirths	Deaths	Natural increase	
2006	61578	473	887	-414	3	7.7	14.4	-6.7	6.3
2007	60966	516	960	-444	7	8.5	15.7	-7.2	13.6
2008	60376	447	880	-433	0	7.4	14.6	-7.2	0.0
2009	59825	441	887	-446	2	7.4	14.8	-7.4	4.5
2010	59263	444	873	-429	2	7.5	14.7	-7.2	4.5
2011	57997	391	879	-488	2	6.7	15.2	-8.4	5.1
2012	57440	420	938	-518	6	7.3	16.3	-9.0	14.3
2013	56903	441	867	-426	5	7.8	15.2	-7.5	11.3
2014	56396	423	872	-449	1	7.5	15.5	-8.0	2.4
2015	55885	418	806	-388	1	7.5	14.4	-6.9	2.4
2016	55381	444	855	-411	3	8.0	15.4	-7.4	6.8
2017	54873	422	880	-458	2	7.7	16.0	-8.3	4.7
2018	54342	431	856	-425	7	7.9	15.8	-7.8	16.2
2019	53824	415	828	-413	2	7.7	15.4	-7.7	4.8
2020	53281	433	927	-494	3	8.1	17.4	-9.3	6.9

Source: Vital Statistics, SORS

Definitions

Population size

Number of population in the respective year. The data on the number of population in 1961, 1971, 1981 and 1991 are census data, while for the inter-census years the number of population was calculated as an average inter-census difference. From 2002 are given the population estimates that were calculated according to the census of population results and the annual statistics of natural mechanical population movements.

Livebirths

Absolute number of live births in the course of a year. Live born child means a child giving vital signs after birth (breathing, i.e. heartbeat), even for the shortest time, regardless the mother's pregnancy duration.

Deaths

Absolute number of deaths in the course of a year. Deceased is a person that whenever after having been born live, shows permanently stopped vital signs.

Natural increase

Natural population increase is the number of live births minus the number of deaths.

Infants deaths

Absolute number of infants deaths in the course of a year. Deceased infant is a child that after having been born live and before aged one year, shows permanently stopped vital signs.

Livebirths, per 1 000 population

Livebirths rate is the ratio of the number of live births and the population size in the respective year. The number of live births is divided by the population size and then multiplied by 1000.

Deaths, per 1 000 population

General mortality rate represents the ratio between the number of deaths and the population size in the respective year. The number of deaths is divided by population size and then multiplied by 1000.

Natural increase, per 1 000 population

Natural population increase rate is the difference between the number of live births and the number of deaths, in relation to the population size in the respective year.

Natural population increase rate = (number of live births - number of deaths) / population size * 1000

Infants deaths, per 1 000 livebirths

Infant mortality rate is the ratio of deceased children under 1 year of age and live births in the respective year. The mortality rate is expressed per 1000 live births.

Infant mortality rate = (number of deceased children under 1 year of age / number of live births) * 1000

Additional info:



Download all database data in Excel format:

[Data](#)



DevInfo profiles:

devinfo.stat.gov.rs/SerbiaProfileLauncher/?lang=en



DevInfo online database:

devinfo.stat.gov.rs/vitalna



For additional information or questions please contact:

devinfo@stat.gov.rs