

Natural changes of population 1961 – 2022

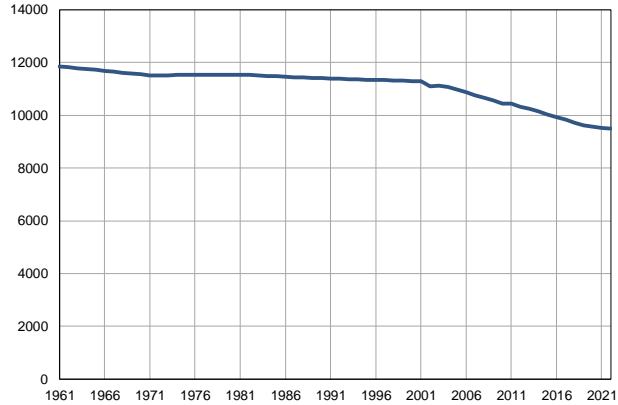
Profile
July 2023

Opovo

	1961	2022
Population size	11848	9504
Livebirths, Number	187	85
Deaths, Number	163	160
Natural increase, Number	24	-75
Infants deaths, Number	16	0
Livebirths, per 1,000 population	16	9
Deaths, per 1,000 population	14	17
Natural increase, per 1,000 population	2	-8
Infants deaths, per 1,000 livebirths	86	0

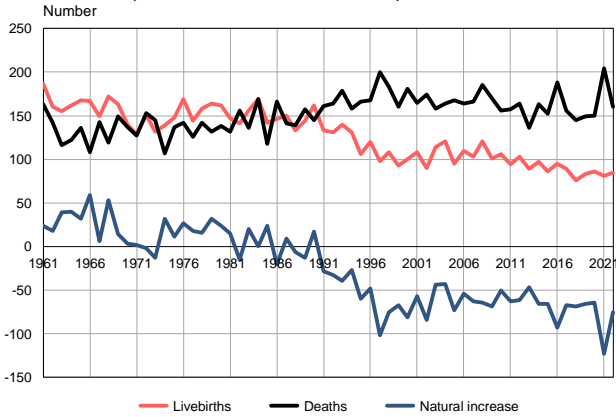
Source: Vital Statistics, SORS

Population size, 1961–2022



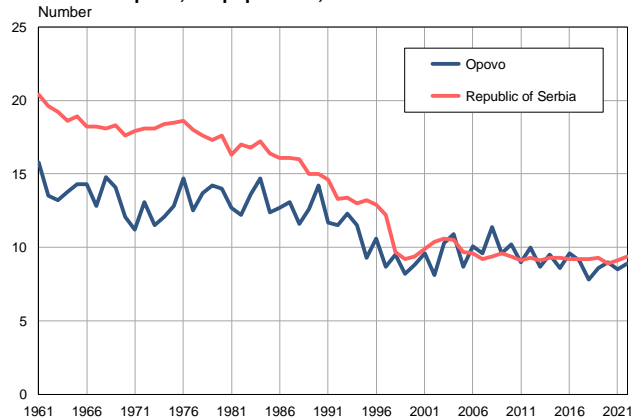
Source: Vital Statistics, SORS

Livebirths, deaths and natural increase, 1961–2022



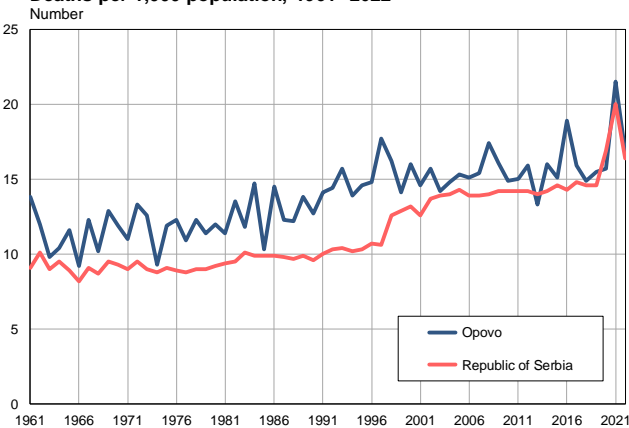
Source: Vital Statistics, SORS

Livebirths per 1,000 population, 1961–2022



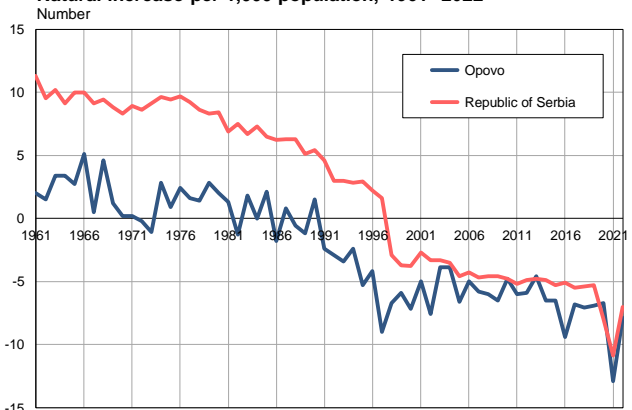
Source: Vital Statistics, SORS

Deaths per 1,000 population, 1961–2022



Source: Vital Statistics, SORS

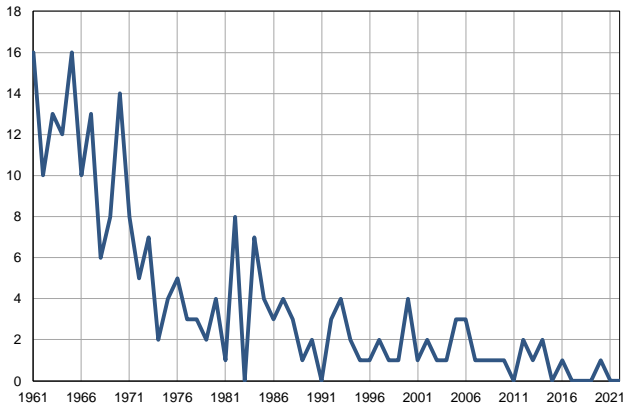
Natural increase per 1,000 population, 1961–2022



Source: Vital Statistics, SORS

Infants deaths, 1961–2022

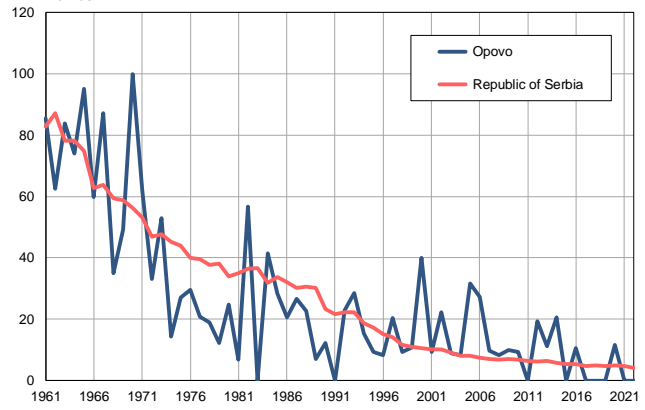
Number



Source: Vital Statistics, SORS

Infants deaths per 1,000 livebirths, 1961–2022

Number



Source: Vital Statistics, SORS

Table. Natural changes of population, Opovo

Year	Number of population	Livebirths	Deaths	Natural increase	Infants deaths	per 1000 population			Infant deaths per 1000 livebirths
						Livebirths	Deaths	Natural increase	
1961	11848	187	163	24	16	15.8	13.8	2.0	85.6
1962	11815	160	142	18	10	13.5	12.0	1.5	62.5
1963	11781	155	116	39	13	13.2	9.8	3.4	83.9
1964	11748	162	122	40	12	13.8	10.4	3.4	74.1
1965	11715	168	136	32	16	14.3	11.6	2.7	95.2
1966	11682	167	108	59	10	14.3	9.2	5.1	59.9
1967	11648	149	143	6	13	12.8	12.3	0.5	87.2
1968	11615	172	119	53	6	14.8	10.2	4.6	34.9
1969	11582	163	149	14	8	14.1	12.9	1.2	49.1
1970	11548	140	137	3	14	12.1	11.9	0.2	100.0
1971	11515	129	127	2	8	11.2	11.0	0.2	62.0
1972	11518	151	153	-2	5	13.1	13.3	-0.2	33.1
1973	11520	132	145	-13	7	11.5	12.6	-1.1	53.0
1974	11523	139	107	32	2	12.1	9.3	2.8	14.4
1975	11525	148	137	11	4	12.8	11.9	0.9	27.0
1976	11528	169	142	27	5	14.7	12.3	2.4	29.6
1977	11531	144	126	18	3	12.5	10.9	1.6	20.8
1978	11533	158	142	16	3	13.7	12.3	1.4	19.0
1979	11536	164	132	32	2	14.2	11.4	2.8	12.2
1980	11538	162	138	24	4	14.0	12.0	2.0	24.7
1981	11541	147	132	15	1	12.7	11.4	1.3	6.8
1982	11525	141	156	-15	8	12.2	13.5	-1.3	56.7
1983	11510	156	136	20	0	13.6	11.8	1.8	0.0
1984	11494	169	169	0	7	14.7	14.7	0.0	41.4
1985	11478	142	118	24	4	12.4	10.3	2.1	28.2
1986	11462	146	166	-20	3	12.7	14.5	-1.8	20.5
1987	11447	150	141	9	4	13.1	12.3	0.8	26.7
1988	11431	133	139	-6	3	11.6	12.2	-0.6	22.6
1989	11415	144	157	-13	1	12.6	13.8	-1.2	6.9
1990	11400	162	145	17	2	14.2	12.7	1.5	12.3
1991	11384	133	161	-28	0	11.7	14.1	-2.4	0.0
1992	11375	131	164	-33	3	11.5	14.4	-2.9	22.9
1993	11366	140	179	-39	4	12.3	15.7	-3.4	28.6
1994	11356	131	158	-27	2	11.5	13.9	-2.4	15.3
1995	11347	106	166	-60	1	9.3	14.6	-5.3	9.4
1996	11338	120	168	-48	1	10.6	14.8	-4.2	8.3
1997	11329	98	200	-102	2	8.7	17.7	-9.0	20.4
1998	11320	108	183	-75	1	9.5	16.2	-6.7	9.3
1999	11311	93	160	-67	1	8.2	14.1	-5.9	10.8
2000	11301	100	181	-81	4	8.8	16.0	-7.2	40.0
2001	11292	108	165	-57	1	9.6	14.6	-5.0	9.3
2002	11093	90	174	-84	2	8.1	15.7	-7.6	22.2
2003	11119	114	158	-44	1	10.3	14.2	-3.9	8.8
2004	11064	121	164	-43	1	10.9	14.8	-3.9	8.3
2005	10980	95	168	-73	3	8.7	15.3	-6.6	31.6

Table. Natural changes of population, Opovo

Year	Number of population	Livebirths	Deaths	Natural increase	Infants deaths	per 1000 population			Infant deaths per 1000 livebirths
						Livebirths	Deaths	Natural increase	
2006	10882	110	164	-54	3	10.1	15.1	-5.0	27.3
2007	10755	103	166	-63	1	9.6	15.4	-5.8	9.7
2008	10651	121	185	-64	1	11.4	17.4	-6.0	8.3
2009	10565	101	170	-69	1	9.6	16.1	-6.5	9.9
2010	10442	106	156	-50	1	10.2	14.9	-4.8	9.4
2011	10449	94	157	-63	0	9.0	15.0	-6.0	0.0
2012	10326	103	164	-61	2	10.0	15.9	-5.9	19.4
2013	10247	89	136	-47	1	8.7	13.3	-4.6	11.2
2014	10159	97	163	-66	2	9.5	16.0	-6.5	20.6
2015	10037	86	152	-66	0	8.6	15.1	-6.5	0.0
2016	9925	95	188	-93	1	9.6	18.9	-9.4	10.5
2017	9826	89	156	-67	0	9.1	15.9	-6.8	0.0
2018	9717	76	145	-69	0	7.8	14.9	-7.1	0.0
2019	9610	83	149	-66	0	8.6	15.5	-6.9	0.0
2020	9561	86	150	-64	1	9.0	15.7	-6.7	11.6
2021	9509	81	204	-123	0	8.5	21.5	-12.9	0.0
2022	9504	85	160	-75	0	8.9	16.8	-7.9	0.0

Source: Vital Statistics, SORS

Definitions

Population size

Number of population in the respective year. The data on the number of population in 1961, 1971, 1981 and 1991 are census data, while for the inter-census years the number of population was calculated as an average inter-census difference. From 2002 are given the population estimates that were calculated according to the census of population results and the annual statistics of natural mechanical population movements.

Livebirths

Absolute number of live births in the course of a year. Live born child means a child giving vital signs after birth (breathing, i.e. heartbeat), even for the shortest time, regardless the mother's pregnancy duration.

Deaths

Absolute number of deaths in the course of a year. Deceased is a person that whenever after having been born live, shows permanently stopped vital signs.

Natural increase

Natural population increase is the number of live births minus the number of deaths.

Infants deaths

Absolute number of infants deaths in the course of a year. Deceased infant is a child that after having been born live and before aged one year, shows permanently stopped vital signs.

Livebirths, per 1 000 population

Livebirths rate is the ratio of the number of live births and the population size in the respective year. The number of live births is divided by the population size and then multiplied by 1000.

Deaths, per 1 000 population

General mortality rate represents the ratio between the number of deaths and the population size in the respective year. The number of deaths is divided by population size and then multiplied by 1000.

Natural increase, per 1 000 population

Natural population increase rate is the difference between the number of live births and the number of deaths, in relation to the population size in the respective year.

Natural population increase rate = (number of live births - number of deaths) / population size * 1000

Infants deaths, per 1 000 livebirths

Infant mortality rate is the ratio of deceased children under 1 year of age and live births in the respective year. The mortality rate is expressed per 1000 live births.

Infant mortality rate = (number of deceased children under 1 year of age / number of live births) * 1000

Additional info:



Download all database data in Excel format:

[Data](#)



DevInfo profiles:

devinfo.stat.gov.rs/SerbiaProfileLauncher/?lang=en



DevInfo online database:

devinfo.stat.gov.rs/vitalna



For additional information or questions please contact:

devinfo@stat.gov.rs