

# Natural changes of population 1961 – 2022

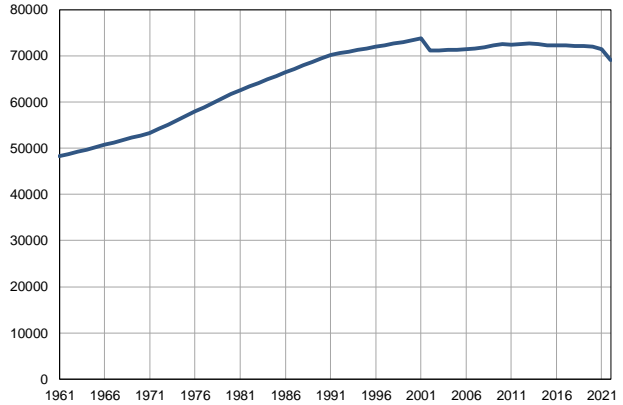
Profile  
July 2023

## Obrenovac

	1961	2022
Population size	48228	69079
Livebirths, Number	824	693
Deaths, Number	416	1100
Natural increase, Number	408	-407
Infants deaths, Number	49	3
Livebirths, per 1,000 population	17	10
Deaths, per 1,000 population	9	16
Natural increase, per 1,000 population	9	-6
Infants deaths, per 1,000 livebirths	60	4

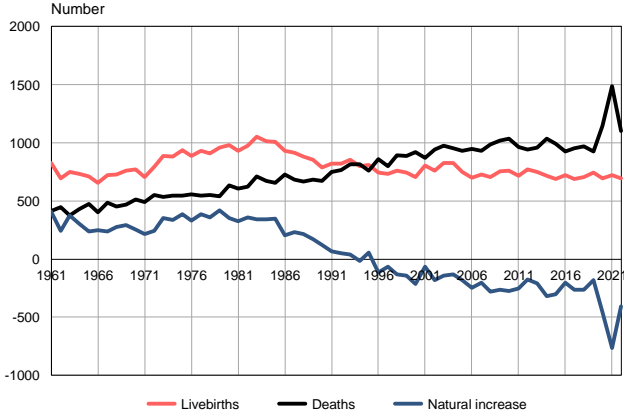
Source: Vital Statistics, SORS

Population size, 1961–2022



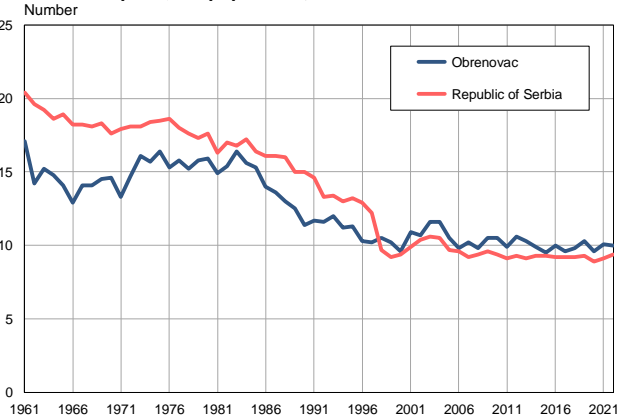
Source: Vital Statistics, SORS

Livebirths, deaths and natural increase, 1961–2022



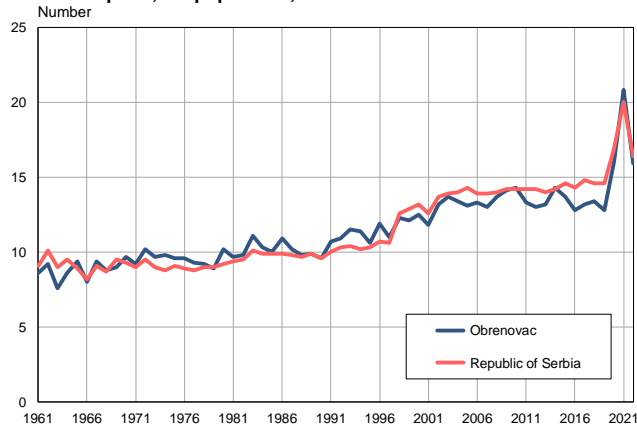
Source: Vital Statistics, SORS

Livebirths per 1,000 population, 1961–2022



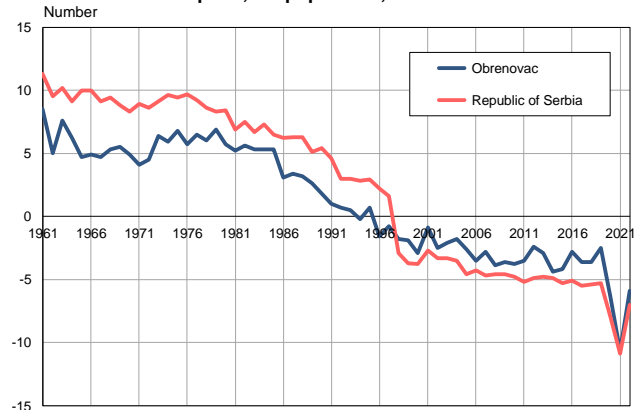
Source: Vital Statistics, SORS

Deaths per 1,000 population, 1961–2022



Source: Vital Statistics, SORS

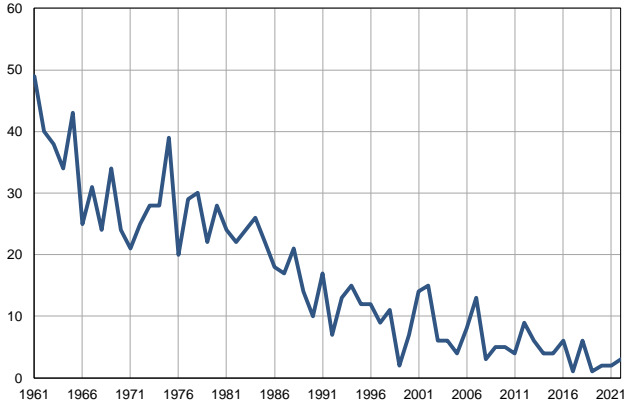
Natural increase per 1,000 population, 1961–2022



Source: Vital Statistics, SORS

**Infants deaths, 1961–2022**

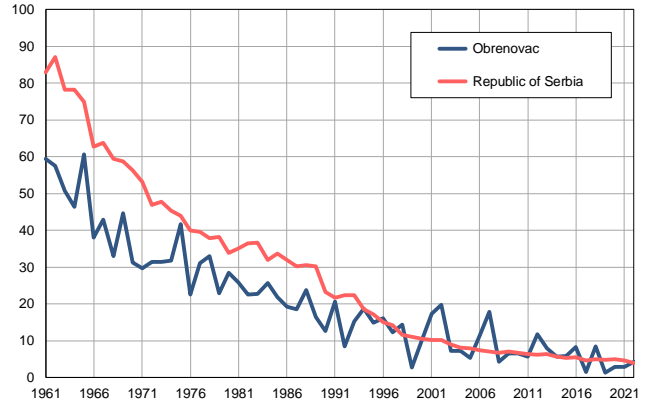
Number



Source: Vital Statistics, SORS

**Infants deaths per 1,000 livebirths, 1961–2022**

Number



Source: Vital Statistics, SORS

**Table. Natural changes of population, Obrenovac**

Year	Number of population	Livebirths	Deaths	Natural increase	Infants deaths	per 1000 population			Infant deaths per 1000 livebirths
						Livebirths	Deaths	Natural increase	
1961	48228	824	416	408	49	17.1	8.6	8.5	59.5
1962	48731	694	449	245	40	14.2	9.2	5.0	57.6
1963	49234	750	374	376	38	15.2	7.6	7.6	50.7
1964	49738	735	429	306	34	14.8	8.6	6.2	46.3
1965	50241	709	473	236	43	14.1	9.4	4.7	60.6
1966	50744	656	405	251	25	12.9	8.0	4.9	38.1
1967	51247	722	483	239	31	14.1	9.4	4.7	42.9
1968	51750	729	453	276	24	14.1	8.8	5.3	32.9
1969	52254	760	470	290	34	14.5	9.0	5.5	44.7
1970	52757	770	514	256	24	14.6	9.7	4.9	31.2
1971	53260	707	491	216	21	13.3	9.2	4.1	29.7
1972	54195	795	552	243	25	14.7	10.2	4.5	31.4
1973	55130	888	537	351	28	16.1	9.7	6.4	31.5
1974	56066	883	548	335	28	15.7	9.8	5.9	31.7
1975	57001	935	547	388	39	16.4	9.6	6.8	41.7
1976	57936	889	557	332	20	15.3	9.6	5.7	22.5
1977	58871	933	546	387	29	15.8	9.3	6.5	31.1
1978	59806	910	552	358	30	15.2	9.2	6.0	33.0
1979	60742	961	541	420	22	15.8	8.9	6.9	22.9
1980	61677	983	632	351	28	15.9	10.2	5.7	28.5
1981	62612	932	605	327	24	14.9	9.7	5.2	25.8
1982	63374	977	620	357	22	15.4	9.8	5.6	22.5
1983	64136	1051	709	342	24	16.4	11.1	5.3	22.8
1984	64899	1015	671	344	26	15.6	10.3	5.3	25.6
1985	65661	1006	657	349	22	15.3	10.0	5.3	21.9
1986	66422	932	726	206	18	14.0	10.9	3.1	19.3
1987	67185	914	682	232	17	13.6	10.2	3.4	18.6
1988	67947	883	666	217	21	13.0	9.8	3.2	23.8
1989	68710	856	682	174	14	12.5	9.9	2.6	16.4
1990	69472	790	670	120	10	11.4	9.6	1.8	12.7
1991	70234	821	752	69	17	11.7	10.7	1.0	20.7
1992	70585	819	767	52	7	11.6	10.9	0.7	8.5
1993	70934	854	815	39	13	12.0	11.5	0.5	15.2
1994	71283	799	814	-15	15	11.2	11.4	-0.2	18.8
1995	71633	812	758	54	12	11.3	10.6	0.7	14.8
1996	71983	745	860	-115	12	10.3	11.9	-1.6	16.1
1997	72333	735	799	-64	9	10.2	11.0	-0.8	12.2
1998	72683	762	894	-132	11	10.5	12.3	-1.8	14.4
1999	73033	745	886	-141	2	10.2	12.1	-1.9	2.7
2000	73382	705	919	-214	7	9.6	12.5	-2.9	9.9
2001	73732	804	870	-66	14	10.9	11.8	-0.9	17.4
2002	71135	761	942	-181	15	10.7	13.2	-2.5	19.7
2003	71158	828	973	-145	6	11.6	13.7	-2.1	7.2
2004	71236	825	955	-130	6	11.6	13.4	-1.8	7.3
2005	71340	751	932	-181	4	10.5	13.1	-2.6	5.3

**Table. Natural changes of population, Obrenovac**

Year	Number of population	Livebirths	Deaths	Natural increase	Infants deaths	per 1000 population			Infant deaths per 1000 livebirths
						Livebirths	Deaths	Natural increase	
2006	71388	701	949	-248	8	9.8	13.3	-3.5	11.4
2007	71521	726	931	-205	13	10.2	13.0	-2.8	17.9
2008	71862	706	988	-282	3	9.8	13.7	-3.9	4.2
2009	72218	757	1021	-264	5	10.5	14.1	-3.6	6.6
2010	72493	762	1037	-275	5	10.5	14.3	-3.8	6.6
2011	72459	716	966	-250	4	9.9	13.3	-3.5	5.6
2012	72621	769	943	-174	9	10.6	13.0	-2.4	11.7
2013	72682	750	960	-210	6	10.3	13.2	-2.9	8.0
2014	72522	717	1035	-318	4	9.9	14.3	-4.4	5.6
2015	72323	690	994	-304	4	9.5	13.7	-4.2	5.8
2016	72246	721	924	-203	6	10.0	12.8	-2.8	8.3
2017	72209	690	951	-261	1	9.6	13.2	-3.6	1.4
2018	72124	707	968	-261	6	9.8	13.4	-3.6	8.5
2019	72085	745	924	-179	1	10.3	12.8	-2.5	1.3
2020	71953	693	1148	-455	2	9.6	16.0	-6.4	2.9
2021	71460	724	1486	-762	2	10.1	20.8	-10.7	2.8
2022	69079	693	1100	-407	3	10.0	15.9	-5.9	4.3

Source: Vital Statistics, SORS

## Definitions

### Population size

Number of population in the respective year. The data on the number of population in 1961, 1971, 1981 and 1991 are census data, while for the inter-census years the number of population was calculated as an average inter-census difference. From 2002 are given the population estimates that were calculated according to the census of population results and the annual statistics of natural mechanical population movements.

### Livebirths

Absolute number of live births in the course of a year. Live born child means a child giving vital signs after birth (breathing, i.e. heartbeat), even for the shortest time, regardless the mother's pregnancy duration.

### Deaths

Absolute number of deaths in the course of a year. Deceased is a person that whenever after having been born live, shows permanently stopped vital signs.

### Natural increase

Natural population increase is the number of live births minus the number of deaths.

### Infants deaths

Absolute number of infants deaths in the course of a year. Deceased infant is a child that after having been born live and before aged one year, shows permanently stopped vital signs.

### Livebirths, per 1 000 population

Livebirths rate is the ratio of the number of live births and the population size in the respective year. The number of live births is divided by the population size and then multiplied by 1000.

### Deaths, per 1 000 population

General mortality rate represents the ratio between the number of deaths and the population size in the respective year. The number of deaths is divided by population size and then multiplied by 1000.

### Natural increase, per 1 000 population

Natural population increase rate is the difference between the number of live births and the number of deaths, in relation to the population size in the respective year.

Natural population increase rate = (number of live births - number of deaths) / population size \* 1000

### Infants deaths, per 1 000 livebirths

Infant mortality rate is the ratio of deceased children under 1 year of age and live births in the respective year. The mortality rate is expressed per 1000 live births.

Infant mortality rate = (number of deceased children under 1 year of age / number of live births) \* 1000

## Additional info:



Download all database data in Excel format:

[Data](#)



DevInfo profiles:

[devinfo.stat.gov.rs/SerbiaProfileLauncher/?lang=en](http://devinfo.stat.gov.rs/SerbiaProfileLauncher/?lang=en)



DevInfo online database:

[devinfo.stat.gov.rs/vitalna](http://devinfo.stat.gov.rs/vitalna)



For additional information or questions please contact:

[devinfo@stat.gov.rs](mailto:devinfo@stat.gov.rs)