

Natural changes of population 1961 – 2022

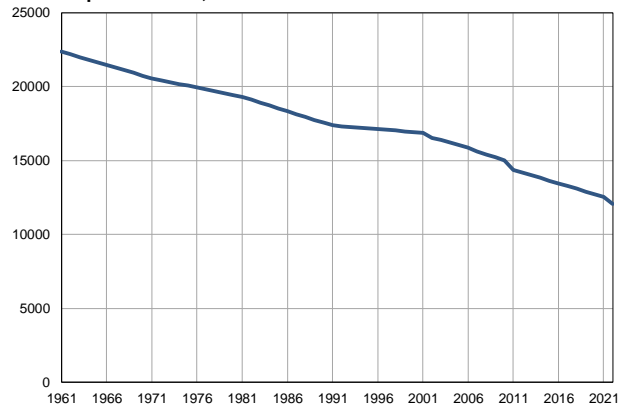
Profile
July 2023

Mionica

	1961	2022
Population size	22359	12075
Livebirths, Number	314	92
Deaths, Number	198	227
Natural increase, Number	116	-135
Infants deaths, Number	22	0
Livebirths, per 1,000 population	14	8
Deaths, per 1,000 population	9	19
Natural increase, per 1,000 population	5	-11
Infants deaths, per 1,000 livebirths	70	0

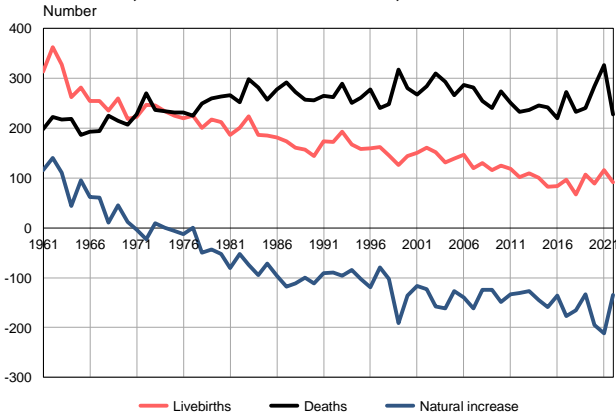
Source: Vital Statistics, SORS

Population size, 1961–2022



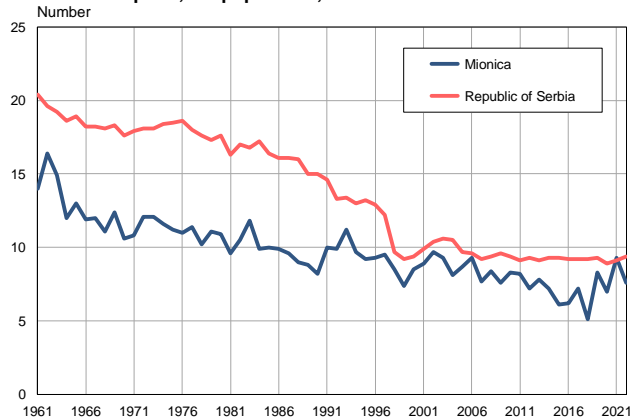
Source: Vital Statistics, SORS

Livebirths, deaths and natural increase, 1961–2022



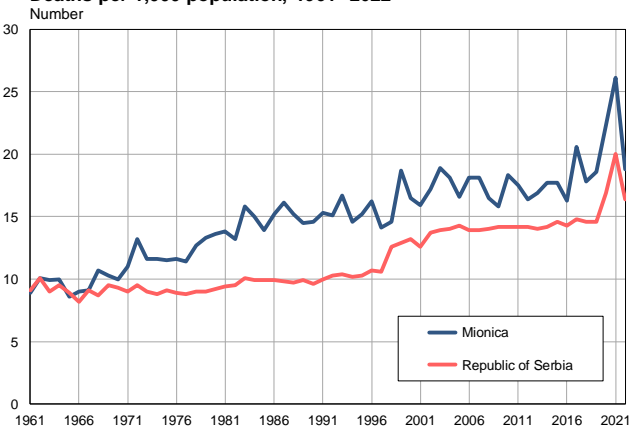
Source: Vital Statistics, SORS

Livebirths per 1,000 population, 1961–2022



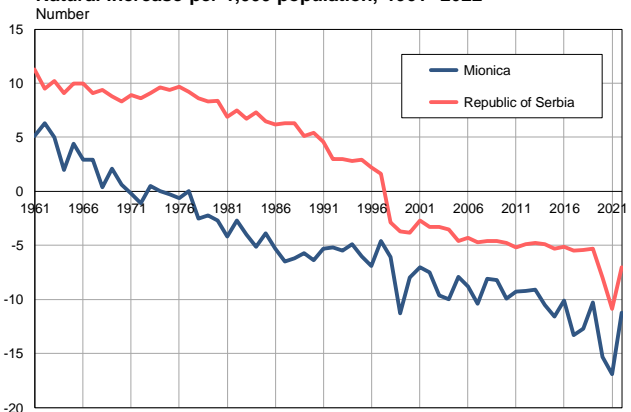
Source: Vital Statistics, SORS

Deaths per 1,000 population, 1961–2022



Source: Vital Statistics, SORS

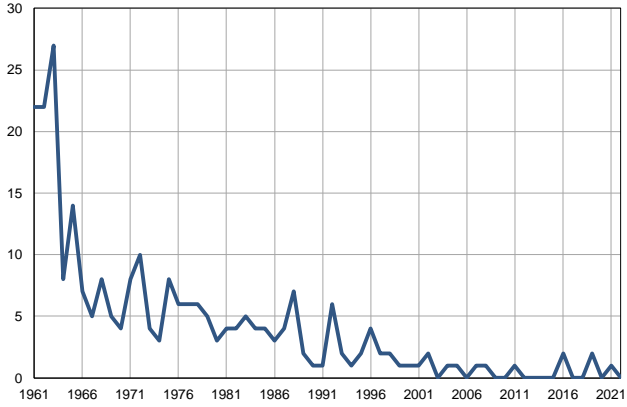
Natural increase per 1,000 population, 1961–2022



Source: Vital Statistics, SORS

Infants deaths, 1961–2022

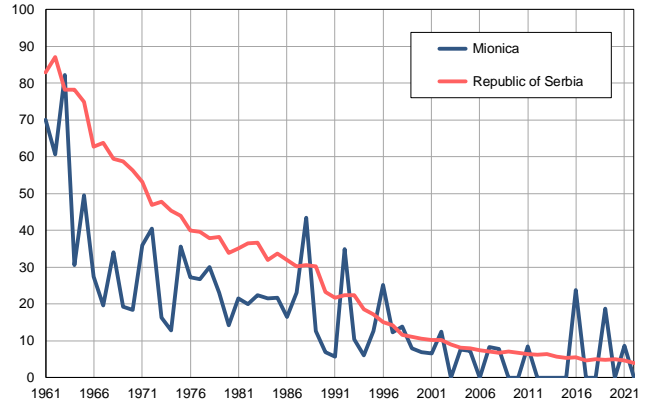
Number



Source: Vital Statistics, SORS

Infants deaths per 1,000 livebirths, 1961–2022

Number



Source: Vital Statistics, SORS

Table. Natural changes of population, Mionica

Year	Number of population	Livebirths	Deaths	Natural increase	Infants deaths	per 1000 population			Infant deaths per 1000 livebirths
						Livebirths	Deaths	Natural increase	
1961	22359	314	198	116	22	14.0	8.9	5.1	70.1
1962	22179	363	223	140	22	16.4	10.1	6.3	60.6
1963	21999	328	217	111	27	14.9	9.9	5.0	82.3
1964	21819	262	218	44	8	12.0	10.0	2.0	30.5
1965	21639	282	187	95	14	13.0	8.6	4.4	49.6
1966	21459	255	193	62	7	11.9	9.0	2.9	27.5
1967	21280	255	194	61	5	12.0	9.1	2.9	19.6
1968	21100	235	225	10	8	11.1	10.7	0.4	34.0
1969	20920	260	215	45	5	12.4	10.3	2.1	19.2
1970	20740	219	207	12	4	10.6	10.0	0.6	18.3
1971	20560	223	227	-4	8	10.8	11.0	-0.2	35.9
1972	20434	247	270	-23	10	12.1	13.2	-1.1	40.5
1973	20307	245	236	9	4	12.1	11.6	0.5	16.3
1974	20181	234	234	0	3	11.6	11.6	0.0	12.8
1975	20055	225	231	-6	8	11.2	11.5	-0.3	35.6
1976	19928	220	232	-12	6	11.0	11.6	-0.6	27.3
1977	19802	225	225	0	6	11.4	11.4	0.0	26.7
1978	19676	200	250	-50	6	10.2	12.7	-2.5	30.0
1979	19550	217	260	-43	5	11.1	13.3	-2.2	23.0
1980	19424	212	264	-52	3	10.9	13.6	-2.7	14.2
1981	19297	186	266	-80	4	9.6	13.8	-4.2	21.5
1982	19104	200	252	-52	4	10.5	13.2	-2.7	20.0
1983	18911	224	298	-74	5	11.8	15.8	-4.0	22.3
1984	18718	186	281	-95	4	9.9	15.0	-5.1	21.5
1985	18525	185	257	-72	4	10.0	13.9	-3.9	21.6
1986	18333	182	278	-96	3	9.9	15.2	-5.3	16.5
1987	18140	174	292	-118	4	9.6	16.1	-6.5	23.0
1988	17947	161	273	-112	7	9.0	15.2	-6.2	43.5
1989	17754	157	257	-100	2	8.8	14.5	-5.7	12.7
1990	17561	144	256	-112	1	8.2	14.6	-6.4	6.9
1991	17368	174	265	-91	1	10.0	15.3	-5.3	5.7
1992	17318	172	262	-90	6	9.9	15.1	-5.2	34.9
1993	17269	193	289	-96	2	11.2	16.7	-5.5	10.4
1994	17219	167	251	-84	1	9.7	14.6	-4.9	6.0
1995	17170	158	261	-103	2	9.2	15.2	-6.0	12.7
1996	17120	159	278	-119	4	9.3	16.2	-6.9	25.2
1997	17071	162	241	-79	2	9.5	14.1	-4.6	12.3
1998	17021	145	248	-103	2	8.5	14.6	-6.1	13.8
1999	16972	126	317	-191	1	7.4	18.7	-11.3	7.9
2000	16922	144	280	-136	1	8.5	16.5	-8.0	6.9
2001	16873	151	268	-117	1	8.9	15.9	-7.0	6.6
2002	16514	161	284	-123	2	9.7	17.2	-7.5	12.4
2003	16387	152	310	-158	0	9.3	18.9	-9.6	0.0
2004	16206	131	293	-162	1	8.1	18.1	-10.0	7.6
2005	16043	139	266	-127	1	8.7	16.6	-7.9	7.2

Table. Natural changes of population, Mionica

Year	Number of population	Livebirths	Deaths	Natural increase	Infants deaths	per 1000 population			Infant deaths per 1000 livebirths
						Livebirths	Deaths	Natural increase	
2006	15870	147	287	-140	0	9.3	18.1	-8.8	0.0
2007	15623	120	282	-162	1	7.7	18.1	-10.4	8.3
2008	15399	130	254	-124	1	8.4	16.5	-8.1	7.7
2009	15212	116	240	-124	0	7.6	15.8	-8.2	0.0
2010	14995	125	274	-149	0	8.3	18.3	-9.9	0.0
2011	14339	118	251	-133	1	8.2	17.5	-9.3	8.5
2012	14176	102	233	-131	0	7.2	16.4	-9.2	0.0
2013	14001	109	236	-127	0	7.8	16.9	-9.1	0.0
2014	13821	100	245	-145	0	7.2	17.7	-10.5	0.0
2015	13638	83	242	-159	0	6.1	17.7	-11.6	0.0
2016	13456	84	220	-136	2	6.2	16.3	-10.1	23.8
2017	13276	96	273	-177	0	7.2	20.6	-13.3	0.0
2018	13080	67	233	-166	0	5.1	17.8	-12.7	0.0
2019	12889	107	240	-133	2	8.3	18.6	-10.3	18.7
2020	12709	89	284	-195	0	7.0	22.3	-15.3	0.0
2021	12518	116	327	-211	1	9.3	26.1	-16.9	8.6
2022	12075	92	227	-135	0	7.6	18.8	-11.2	0.0

Source: Vital Statistics, SORS

Definitions

Population size

Number of population in the respective year. The data on the number of population in 1961, 1971, 1981 and 1991 are census data, while for the inter-census years the number of population was calculated as an average inter-census difference. From 2002 are given the population estimates that were calculated according to the census of population results and the annual statistics of natural mechanical population movements.

Livebirths

Absolute number of live births in the course of a year. Live born child means a child giving vital signs after birth (breathing, i.e. heartbeat), even for the shortest time, regardless the mother's pregnancy duration.

Deaths

Absolute number of deaths in the course of a year. Deceased is a person that whenever after having been born live, shows permanently stopped vital signs.

Natural increase

Natural population increase is the number of live births minus the number of deaths.

Infants deaths

Absolute number of infants deaths in the course of a year. Deceased infant is a child that after having been born live and before aged one year, shows permanently stopped vital signs.

Livebirths, per 1 000 population

Livebirths rate is the ratio of the number of live births and the population size in the respective year. The number of live births is divided by the population size and then multiplied by 1000.

Deaths, per 1 000 population

General mortality rate represents the ratio between the number of deaths and the population size in the respective year. The number of deaths is divided by population size and then multiplied by 1000.

Natural increase, per 1 000 population

Natural population increase rate is the difference between the number of live births and the number of deaths, in relation to the population size in the respective year.

Natural population increase rate = (number of live births - number of deaths) / population size * 1000

Infants deaths, per 1 000 livebirths

Infant mortality rate is the ratio of deceased children under 1 year of age and live births in the respective year. The mortality rate is expressed per 1000 live births.

Infant mortality rate = (number of deceased children under 1 year of age / number of live births) * 1000

Additional info:



Download all database data in Excel format:

[Data](#)



DevInfo profiles:

devinfo.stat.gov.rs/SerbiaProfileLauncher/?lang=en



DevInfo online database:

devinfo.stat.gov.rs/vitalna



For additional information or questions please contact:

devinfo@stat.gov.rs