

Natural changes of population 1961 – 2022

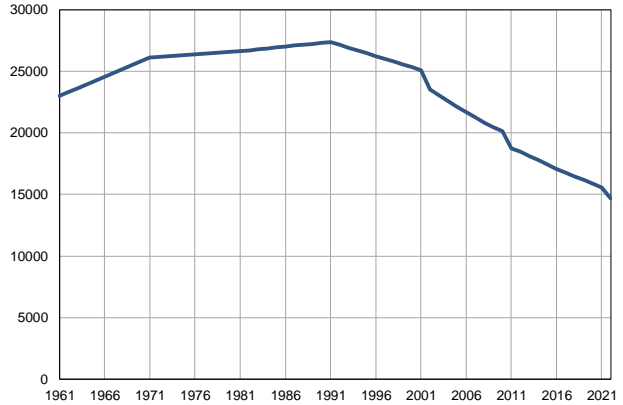
Profile
July 2023

Majdanpek

	1961	2022
Population size	23022	14679
Livebirths, Number	502	104
Deaths, Number	210	315
Natural increase, Number	292	-211
Infants deaths, Number	35	0
Livebirths, per 1,000 population	22	7
Deaths, per 1,000 population	9	22
Natural increase, per 1,000 population	13	-14
Infants deaths, per 1,000 livebirths	70	0

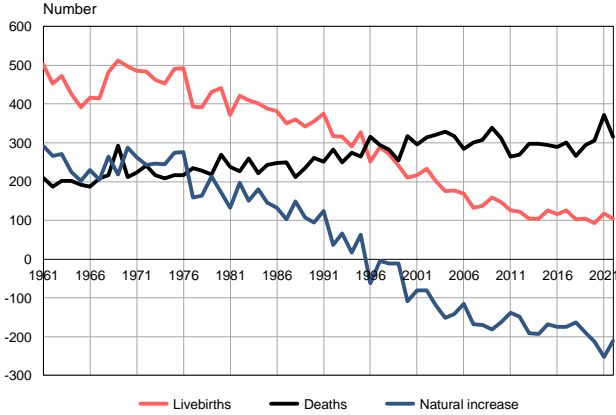
Source: Vital Statistics, SORS

Population size, 1961–2022



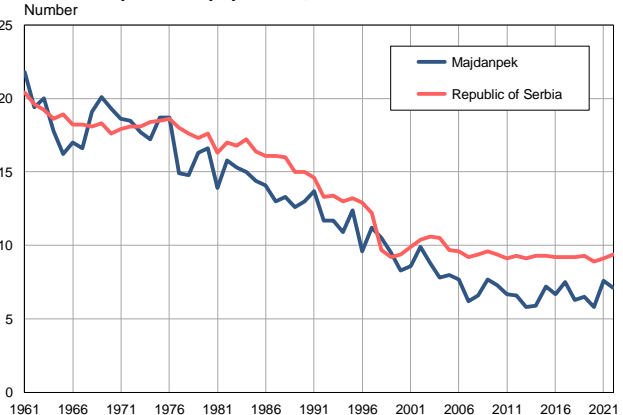
Source: Vital Statistics, SORS

Livebirths, deaths and natural increase, 1961–2022



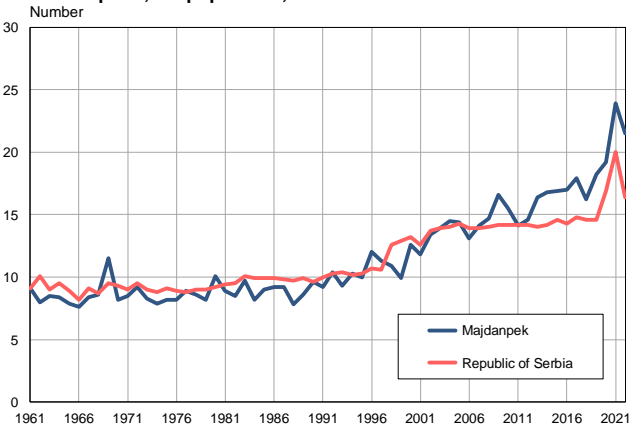
Source: Vital Statistics, SORS

Livebirths per 1,000 population, 1961–2022



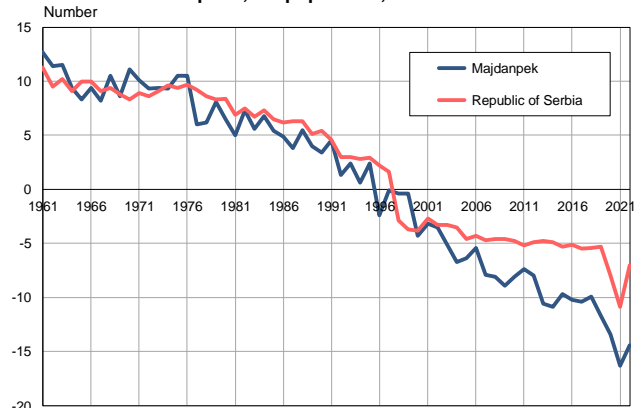
Source: Vital Statistics, SORS

Deaths per 1,000 population, 1961–2022



Source: Vital Statistics, SORS

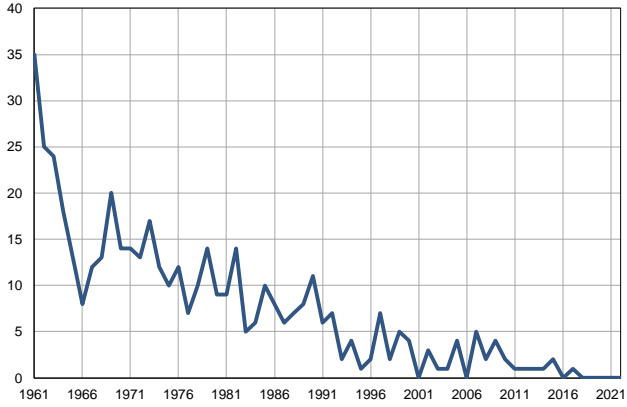
Natural increase per 1,000 population, 1961–2022



Source: Vital Statistics, SORS

Infants deaths, 1961–2022

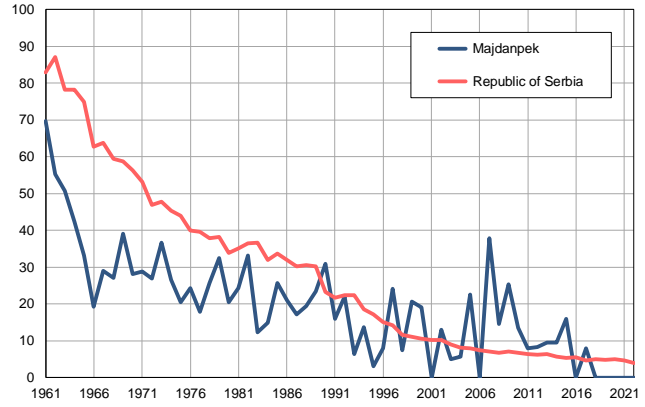
Number



Source: Vital Statistics, SORS

Infants deaths per 1,000 livebirths, 1961–2022

Number



Source: Vital Statistics, SORS

Table. Natural changes of population, Majdanpek

Year	Number of population	Livebirths	Deaths	Natural increase	Infants deaths	per 1000 population			Infant deaths per 1000 livebirths
						Livebirths	Deaths	Natural increase	
1961	23022	502	210	292	35	21.8	9.1	12.7	69.7
1962	23332	452	186	266	25	19.4	8.0	11.4	55.3
1963	23642	473	202	271	24	20.0	8.5	11.5	50.7
1964	23951	426	201	225	18	17.8	8.4	9.4	42.3
1965	24261	392	191	201	13	16.2	7.9	8.3	33.2
1966	24570	417	187	230	8	17.0	7.6	9.4	19.2
1967	24881	414	209	205	12	16.6	8.4	8.2	29.0
1968	25190	482	217	265	13	19.1	8.6	10.5	27.0
1969	25500	512	293	219	20	20.1	11.5	8.6	39.1
1970	25810	498	211	287	14	19.3	8.2	11.1	28.1
1971	26120	486	223	263	14	18.6	8.5	10.1	28.8
1972	26171	484	241	243	13	18.5	9.2	9.3	26.9
1973	26222	463	217	246	17	17.7	8.3	9.4	36.7
1974	26273	452	208	244	12	17.2	7.9	9.3	26.5
1975	26323	491	216	275	10	18.7	8.2	10.5	20.4
1976	26373	493	217	276	12	18.7	8.2	10.5	24.3
1977	26425	393	234	159	7	14.9	8.9	6.0	17.8
1978	26476	391	228	163	10	14.8	8.6	6.2	25.6
1979	26526	432	218	214	14	16.3	8.2	8.1	32.4
1980	26577	441	269	172	9	16.6	10.1	6.5	20.4
1981	26628	371	238	133	9	13.9	8.9	5.0	24.3
1982	26703	422	226	196	14	15.8	8.5	7.3	33.2
1983	26778	410	260	150	5	15.3	9.7	5.6	12.2
1984	26853	402	221	181	6	15.0	8.2	6.8	14.9
1985	26928	389	243	146	10	14.4	9.0	5.4	25.7
1986	27003	381	248	133	8	14.1	9.2	4.9	21.0
1987	27078	351	249	102	6	13.0	9.2	3.8	17.1
1988	27153	360	211	149	7	13.3	7.8	5.5	19.4
1989	27228	342	235	107	8	12.6	8.6	4.0	23.4
1990	27303	356	261	95	11	13.0	9.6	3.4	30.9
1991	27378	375	251	124	6	13.7	9.2	4.5	16.0
1992	27150	318	282	36	7	11.7	10.4	1.3	22.0
1993	26921	316	250	66	2	11.7	9.3	2.4	6.3
1994	26694	291	275	16	4	10.9	10.3	0.6	13.7
1995	26465	327	264	63	1	12.4	10.0	2.4	3.1
1996	26238	252	315	-63	2	9.6	12.0	-2.4	7.9
1997	26008	290	294	-4	7	11.2	11.3	-0.1	24.1
1998	25780	271	282	-11	2	10.5	10.9	-0.4	7.4
1999	25551	242	254	-12	5	9.5	9.9	-0.4	20.7
2000	25324	210	318	-108	4	8.3	12.6	-4.3	19.0
2001	25095	216	296	-80	0	8.6	11.8	-3.2	0.0
2002	23519	233	314	-81	3	9.9	13.4	-3.5	12.9
2003	23046	202	320	-118	1	8.8	13.9	-5.1	5.0
2004	22571	176	328	-152	1	7.8	14.5	-6.7	5.7
2005	22116	177	318	-141	4	8.0	14.4	-6.4	22.6

Table. Natural changes of population, Majdanpek

Year	Number of population	Livebirths	Deaths	Natural increase	Infants deaths	per 1000 population			Infant deaths per 1000 livebirths
						Livebirths	Deaths	Natural increase	
2006	21691	168	284	-116	0	7.7	13.1	-5.4	0.0
2007	21267	132	300	-168	5	6.2	14.1	-7.9	37.9
2008	20839	137	307	-170	2	6.6	14.7	-8.1	14.6
2009	20458	158	339	-181	4	7.7	16.6	-8.9	25.3
2010	20145	148	312	-164	2	7.3	15.5	-8.1	13.5
2011	18748	126	265	-139	1	6.7	14.1	-7.4	7.9
2012	18454	122	270	-148	1	6.6	14.6	-8.0	8.2
2013	18127	105	297	-192	1	5.8	16.4	-10.6	9.5
2014	17775	105	298	-193	1	5.9	16.8	-10.9	9.5
2015	17431	126	294	-168	2	7.2	16.9	-9.7	15.9
2016	17090	115	290	-175	0	6.7	17.0	-10.2	0.0
2017	16752	126	300	-174	1	7.5	17.9	-10.4	7.9
2018	16437	103	266	-163	0	6.3	16.2	-9.9	0.0
2019	16174	105	294	-189	0	6.5	18.2	-11.7	0.0
2020	15893	92	305	-213	0	5.8	19.2	-13.4	0.0
2021	15552	118	371	-253	0	7.6	23.9	-16.3	0.0
2022	14679	104	315	-211	0	7.1	21.5	-14.4	0.0

Source: Vital Statistics, SORS

Definitions

Population size

Number of population in the respective year. The data on the number of population in 1961, 1971, 1981 and 1991 are census data, while for the inter-census years the number of population was calculated as an average inter-census difference. From 2002 are given the population estimates that were calculated according to the census of population results and the annual statistics of natural mechanical population movements.

Livebirths

Absolute number of live births in the course of a year. Live born child means a child giving vital signs after birth (breathing, i.e. heartbeat), even for the shortest time, regardless the mother's pregnancy duration.

Deaths

Absolute number of deaths in the course of a year. Deceased is a person that whenever after having been born live, shows permanently stopped vital signs.

Natural increase

Natural population increase is the number of live births minus the number of deaths.

Infants deaths

Absolute number of infants deaths in the course of a year. Deceased infant is a child that after having been born live and before aged one year, shows permanently stopped vital signs.

Livebirths, per 1 000 population

Livebirths rate is the ratio of the number of live births and the population size in the respective year. The number of live births is divided by the population size and then multiplied by 1000.

Deaths, per 1 000 population

General mortality rate represents the ratio between the number of deaths and the population size in the respective year. The number of deaths is divided by population size and then multiplied by 1000.

Natural increase, per 1 000 population

Natural population increase rate is the difference between the number of live births and the number of deaths, in relation to the population size in the respective year.

Natural population increase rate = (number of live births - number of deaths) / population size * 1000

Infants deaths, per 1 000 livebirths

Infant mortality rate is the ratio of deceased children under 1 year of age and live births in the respective year. The mortality rate is expressed per 1000 live births.

Infant mortality rate = (number of deceased children under 1 year of age / number of live births) * 1000

Additional info:



Download all database data in Excel format:

[Data](#)



DevInfo profiles:

devinfo.stat.gov.rs/SerbiaProfileLauncher/?lang=en



DevInfo online database:

devinfo.stat.gov.rs/vitalna



For additional information or questions please contact:

devinfo@stat.gov.rs